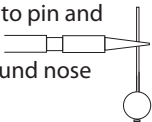


Creating a Loop on a Head/Eye Pin -

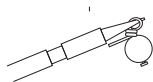
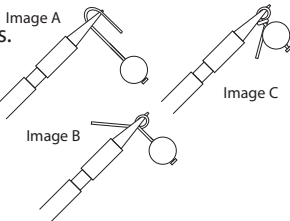


Wrap Around Method

Step 1. Slid bead onto pin and hold the pin 5mm above bead with round nose pliers.



Step 2. Wrap top of pin into a loop (Image A), curling it around the pliers. (Image B) Then twist the wire back around the pin just above the bead. (Image C)



Step 3. Wrap 1-2 times round the pin, then trim excess wire. To neaten, push end of wire inwards.



Curl Method

Step 1. Slid bead onto pin and hold the pin just above bead with round nose pliers.

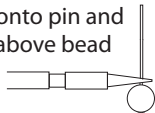


Image C

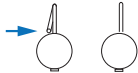
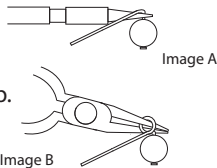


Image D

Step 2. Bend the pin wire at right-angles to the bead (Image A), then curl the pin round the round-nose pliers to create a loop. (Image B)



Step 3. Trim excess pin wire as close to your loop as possible with wire cutters, (Image C) then gently push end of your loop inwards to sit in line with the pin. (Image D)