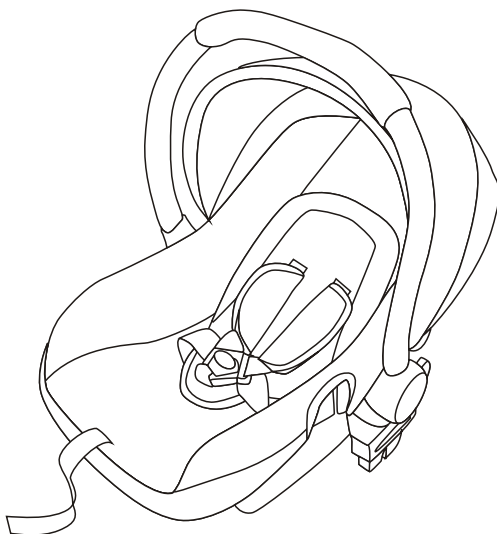


Belera Infant Carrier
BPC8088(TL60)
Suitable for Belera Leatherette the Push chair



INSTRUCTIONS: PLEASE READ CAREFULLY AND KEEP
FOR FUTURE REFERENCE. YOUR CHILD'S SAFETY MAY BE
AFFECTED IF YOU DO NOT FOLLOW THESE INSTRUCTIONS.

This product conforms to ECE R44.04
This product is tested to BS EN 1888:2012

Group 0+ child car seat.
Suitable for children from birth to 13kg (approx. 12 months)

Safety advice

WARNING: The correct fitting of the vehicle seatbelt (following the guide markings) is of vital importance for the safety of your child. See the labels on the seat itself.

WARNING: Keep these instructions with the child car seat for future reference.

WARNING: Never leave your child unattended.

WARNING: NEVER use the child car seat on a passenger seat that is fitted with a front airbag. **THIS CAN BE VERY DANGEROUS.**

- The product is only safe if it is used in strict accordance with these instructions.
- The product must be replaced if it is involved in an accident as it may have unseen damage.
- Do not use this product second hand as you do not know its history.
- Ensure that all other passengers, luggage and loose objects are properly secured.
- Do not lubricate any of the moving parts.
- It is recommended that the child car seat should not be used more than 5 years from the date of production as the product may deteriorate due to, for example, ageing of the plastic.
- Never use the child car seat without the covers. Only covers approved by the manufacturer may be used.
- The child car seat must be secured with the vehicle seatbelt when not in use.
- Ensure that the child car seat is not damaged by heavy objects or being caught in the car door.
- Never make unauthorised alterations to the product.
- Child car seat parts may become hot in direct sunlight. Cover with sheet to prevent this.
- Most accidents occur on short trips, so do not be tempted to avoid using the child car seat simply because you are not travelling very far.
- Do not leave the child in the child car seat for long periods of time. Take regular breaks on long journeys.
- Set a good example by always wearing a seatbelt yourself.
- Make sure that your child never plays with the buckle.
- The importance of ensuring that any lap strap is worn low down, so that the pelvis is firmly engaged, shall be stressed.

WARNING: Failure to follow each of the following instructions can result in your child striking the vehicle's interior during a sudden stop or crash.

WARNING: Take care that the straps holding the child car seat to the vehicle, are as tight as possible. Make sure that the straps restraining the child are adjusted to the child's body and the straps are not twisted.

WARNING: The child restraint system **MUST BE CHANGED** after it has suffered from a violent impact in an accident.



Vehicle seatbelt

The product must only be used with a 3-point vehicle seatbelt that has been approved to ECE R16 or equivalent. **NEVER** use a 2-point seatbelt. Your child car seat can be fitted in most cars. However, some cars are designed so that proper installation is not possible. In this case, try another seat.

Vehicle seat travelling advice

In order to maximise the protection that the child car seat can give your child, please adjust the harness so that it fits snugly and make sure that the child car seat is fitted correctly.

Research shows that correct installation is the most important factor in child car seat safety.

Please take the time to read the instruction manual carefully.

Our product offers maximum protection when it is used in accordance with the instructions.

If you have any questions concerning the use of the product please do not hesitate to contact us.

- This child car seat is designed for use for children whose weight is 13kg or less and whose heights are 66cm (26 inches) or less.
- This child car seat must only be used rear facing , and must **NEVER** be used forward facing. For maximum protection, the centre rear seat position (if it is fitted with an adult 3-point seatbelt) is recommended as the safest position in most vehicles for installing an child car seat. (Only use the vehicle's rear centre seat if the vehicle seat is fitted with a 3-point adult belt).
- Do not use your child car seat on a vehicle seat with lap belts only.
- Your child car seat should not be purchased or sold as a second hand item.
- Remove child out of the car as first priority in an accident.
- While travelling it is recommended that any luggage or other objects liable to cause injuries in the event of a collision shall be properly secured.
- Your child car seat should be securely belted to the vehicle, even when unoccupied because in a crash an unsecured child car seat may injure other passengers.
- Please take a rest every two hours if you are travelling with a baby in the child car seat.
- Please check the child car seat condition if you are going to travel a long distance with a child.
- Please put all excess luggage into the boot of your car if you are going to travel with a baby, because loose items may hurt a baby when travelling on unstable roads or because they move suddenly when braking.
- Please always check the child car seat before you place a baby into it.
- Please get in touch with the dealer if anything breaks on the child car seat. Only the manufacturer or an authorised agent may do repairs. **DO NOT** try and fix the child car seat by yourself. It might be damaged or cause more damage.
- Always check the buckle hole before you buckle up as it may contain crumbs or obstructions that prevent a secure lock.
- Keep your child car seat out of reach of children when not in use.
- Please keep the plastic packaging bag out of the reach of children when unpacking the child car seat.
- **NEVER** place the child car seat on a seat where an air bag is active.
- Do not modify the child car seat.

Notices

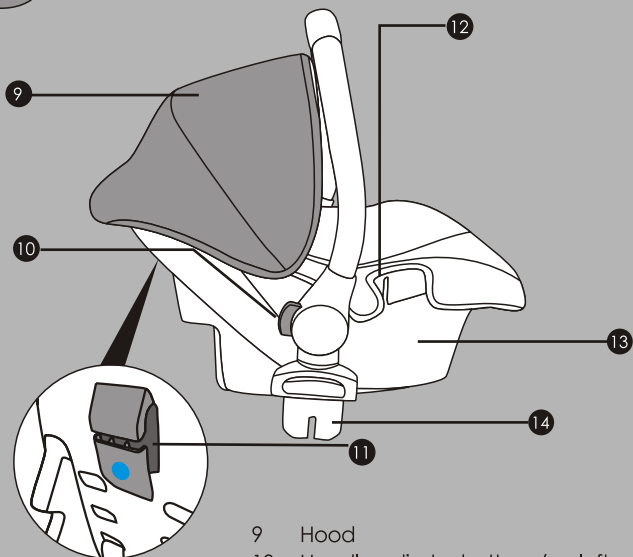
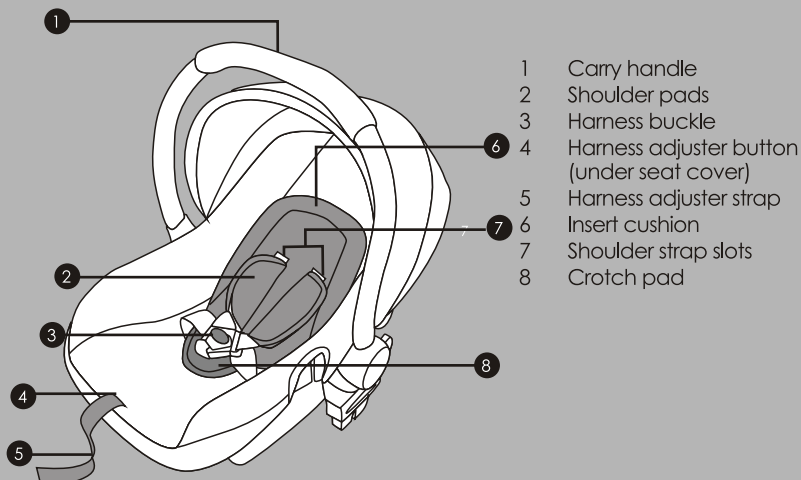
This is a "Universal" child restraint. It is approved to Regulation No.44, 04 series of amendments, for general use in vehicles and it will fit most, but not all, car seat.

A correct fit is likely if the vehicle manufacturer has declared in the vehicle handbook that the vehicle is capable of accepting a "Universal" child restraint for this age group.

This child restraint has been classified as "Universal" under more stringent conditions than those which applied to earlier design which do not carry this notice.

If in doubt, consult either the child restraint manufacture or the retailer.

Parts checklist



- 9 Hood
- 10 Handle adjuster buttons (on left and right of shell)
- 11 Diagonal seatbelt guide (on rear of shell)
- 12 Lap belt guides
- 13 Shell
- 14 Pushchair adaptors

Positioning the child car seat

The child car seat can only be used with an automatic 3-point safety belt (A) and **NOT** with a 2-point lap belt (B).

The child car seat can be secured on forward-facing back seats of the vehicle by using the existing seat belts. However, on some seats, if the installation is not properly secured, we suggest you try another seat in your vehicle.

Although not recommended, the child car seat can be used on a passenger side front seat, so long as there is no active airbag in place.

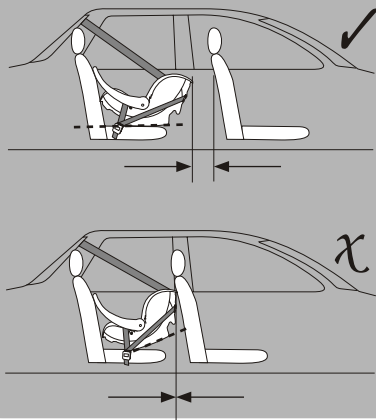
WARNING: Never use on a seat with an active airbag.

WARNING: Never use on rearward or side facing vehicle seats



Front passenger seat (no active airbag)	Yes
Front passenger seat (active airbag)	NO
2-point seatbelt	NO
3-point seatbelt	Yes
Back left & right seats	Yes
Back centre seat (3-point seatbelt)	Yes
Back centre seat (2-point seatbelt)	NO
Side facing seats	NO
Rear facing seats	NO

The child car seat must not touch the front passenger seat.



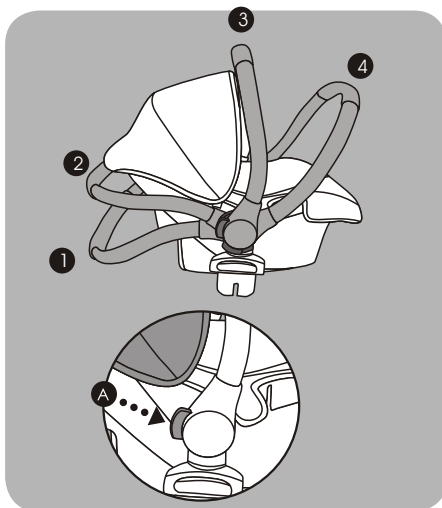
Adjusting the carry handle

The carry handle has 4 positions.

- (1) Feeding/non-rocking position.
- (2) Rocking position.
- (3) Carrying position: Make sure handle is locked before lifting.
- (4) Rocking position, When the car seat is installed on a vehicle in use, you must adjust the carry handle to position 4.

Press both buttons (A) and rotate the handle to the desired position.

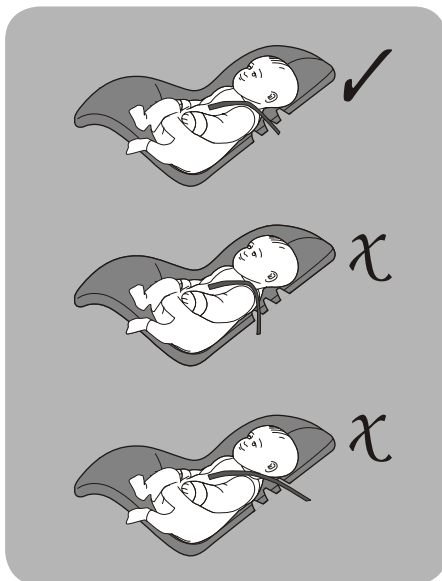
WARNING: NEVER place the child car seat on a soft surface e.g. cushion, mattress, pillow etc, due to risk of suffocation if child car seat tips over. Never leave a child unattended.



Adjusting the shoulder harness height

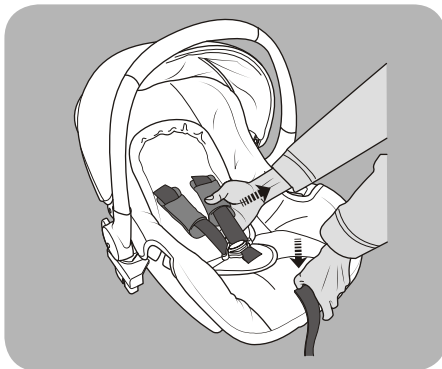
The harness should exit the child car seat at the same height as the child's shoulder and should not exit higher or lower than the child's shoulder.

WARNING: You should not attempt to adjust the harness height with a child seated in the child car seat.

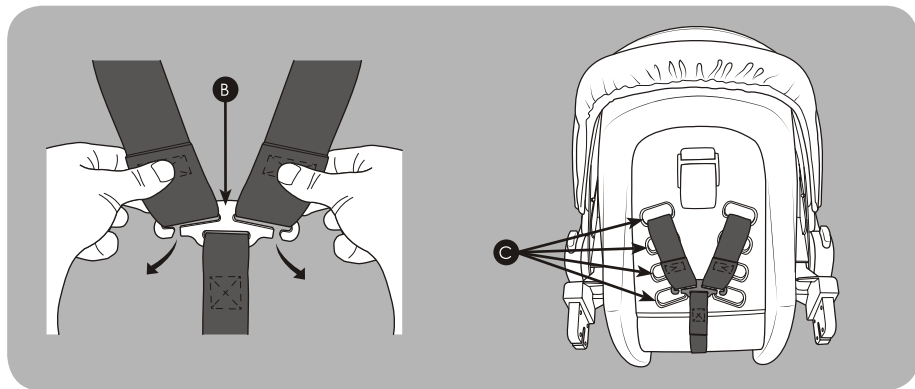
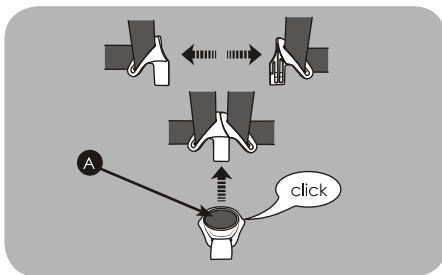


Adjusting the shoulder harness height (continued)

Press the belt adjuster button and pull on the shoulder harness straps to create slack.



Press the red release button (A), unbuckle the harness, move the shoulder straps apart and remove the shoulder pads.

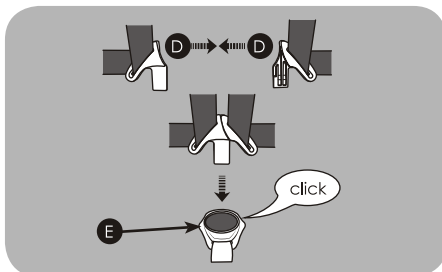


Unhook the shoulder straps at the rear of the seat shell by sliding the straps through the slits in yoke (B). Remove the straps, pulling them out from the front of the seat.

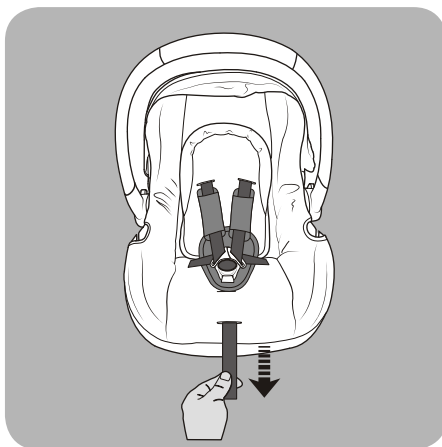
Pass the shoulder straps back through at one of the four desired heights (C) and reconnect them to the yoke (B).

Adjusting the shoulder harness height (continued)

Buckle up the harness. Connect the two shoulder strap connectors (D) and insert into the buckle (E). Ensure harness buckle is firmly clicked into place.

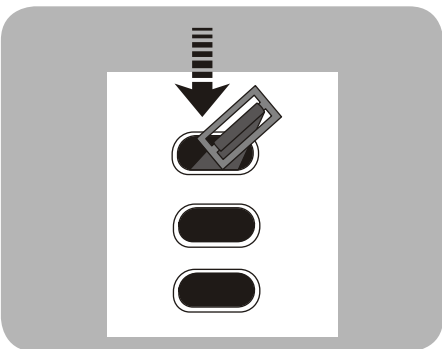


Pull the harness adjuster strap tight and check straps are not twisted.

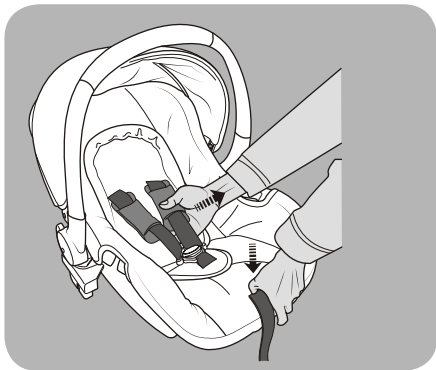


Adjusting the crotch strap

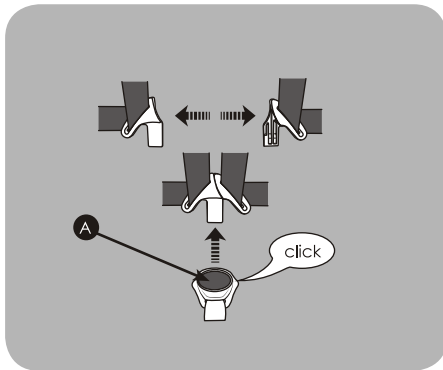
The crotch strap can be repositioned for a more comfortable fit as your child grows. To reposition the crotch strap: pass the strap retainer up through one of the 3 slots in the base of the child car seat and thread it back down through the desired slot.



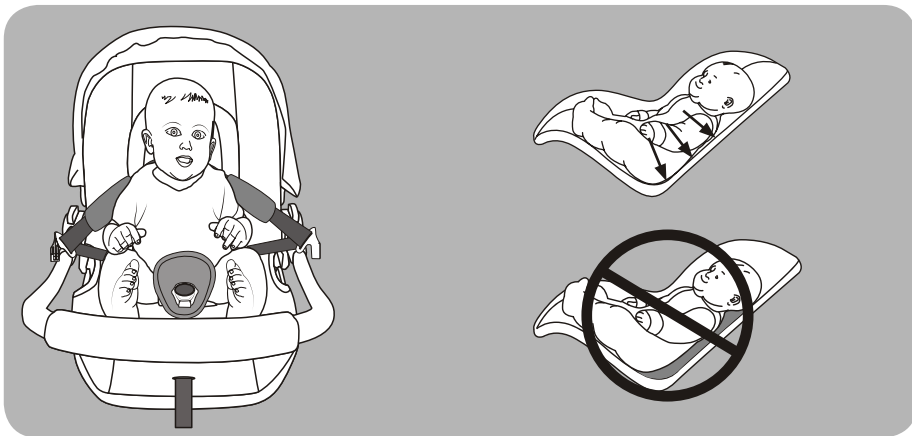
Fitting the harness



Press the belt adjuster button and pull on the shoulder harness straps to create slack.



Press the red release button (A), unbuckle the harness and move the shoulder straps apart.



Place the child in the child car seat and ensure there are no spaces under the child.

Note: a new born baby may need extra support around the head and body. Ensure you use the supplied insert cushion if you are going to use it for a newborn or small baby less than 7 months old (9kg or less). Also ensure that the shoulder harness is at the lowest height setting.

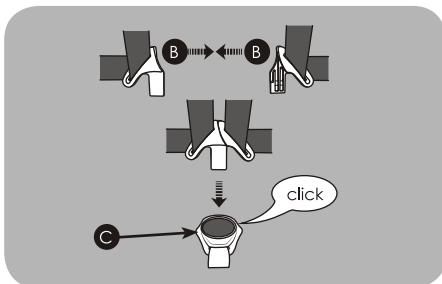
Fitting the harness (continued)

Place the shoulder harness over the shoulders.

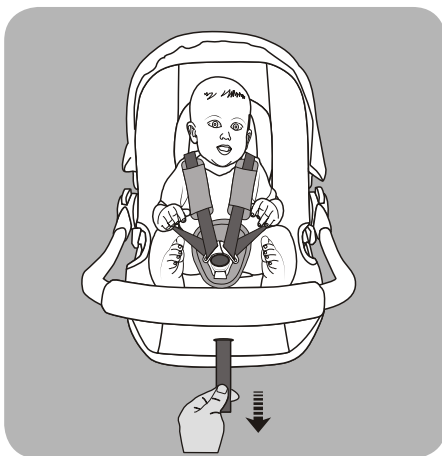
Note: Do not place your child in a sleeping bag, blanket or other bulky wrapping before putting the child in the child car seat. The shoulder straps will not fit snugly and the child will not be safe.



Buckle up the harness. Connect the two shoulder strap connectors (B) and insert into the buckle (C). Ensure harness buckle is firmly clicked into place.



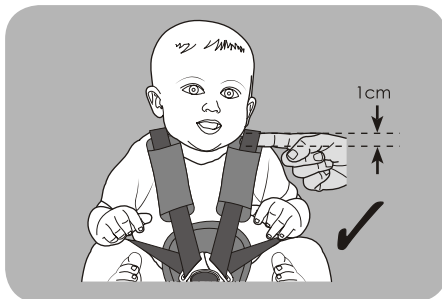
Pull the harness adjuster strap to secure the harness around the child.



Fitting the harness (continued)

The harness should allow 1 finger-width (1cm) of space at the top of the shoulders. This is the ideal tightness.

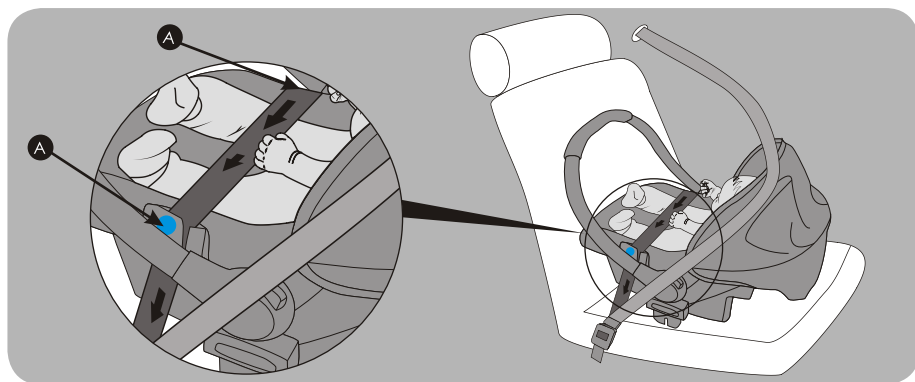
Note: Check that the buckle is secured by tugging the shoulder and waist straps.



Fitting the child seat in a vehicle

Choose a seat suitable for fitting the child car seat to. See page 5, 'Positioning the child car seat'.

Place the child car seat rearward-facing on the vehicle seat. Ensure the handle is in the upright position as shown.



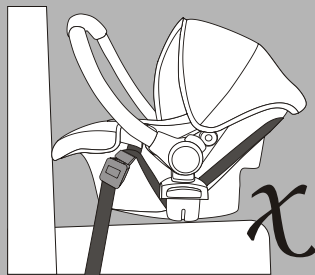
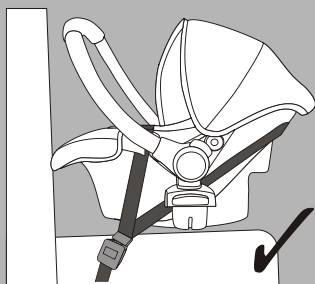
Place the vehicle lap belt across the child car seat and slide the lap belt into the slots (A) on both sides of the child car seat. Buckle up the vehicle seat belt (B).

Fitting the child seat in a vehicle (continued)

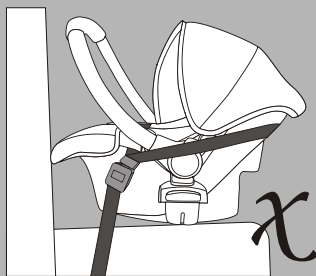
Take the diagonal belt around the back of the child car seat and slot it into the rear seat belt guide (C).

Thread the section of diagonal belt which runs from the seat buckle to the rear seat belt guide (C) from the side shell.

Once the seat belts are in their correct mounting points make sure the seat belt buckle is secure and there are no twists in the belt and that all slack is removed from the lap and diagonal sections.



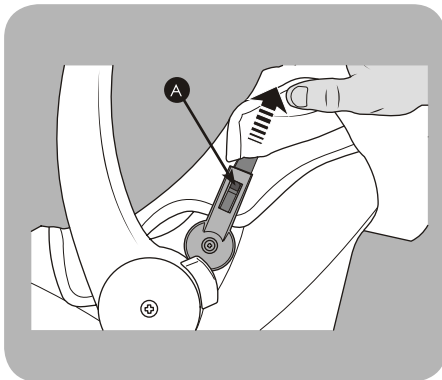
Note: If the vehicle seatbelt buckle is above the top edge of the child seat then this car seat is not suitable for the vehicle (this is called 'buckle crunch' and can cause the vehicle seatbelt to come undone in an accident).



Removing and attaching the hood

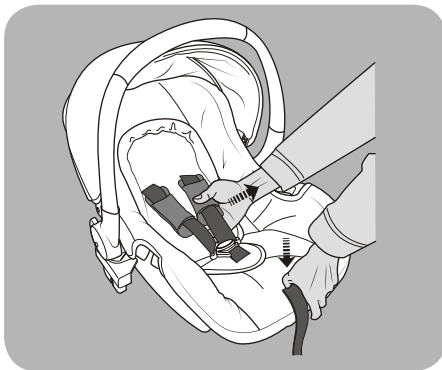
To remove the hood: press the small tabs (A) on each side of the child car seat and slide the plastic stay out from the socket.

To re-attach the hood push each end of the plastic stay into the sockets on each side of the carrier, ensuring they click into place.

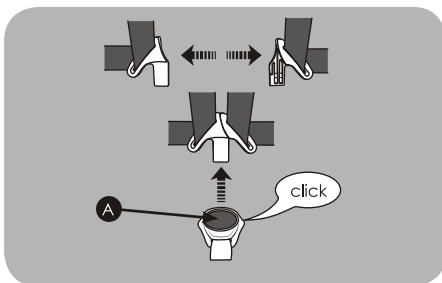


Removing the seat cover

Press the belt adjuster button and pull on the shoulder harness straps to create slack.

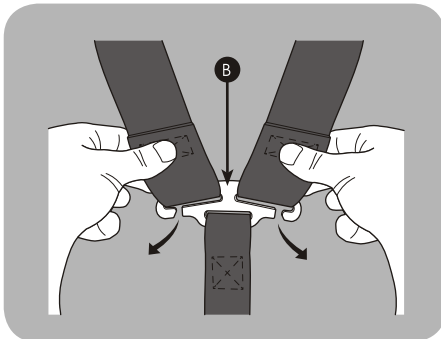


Press the red release button (A), unbuckle the harness and move the shoulder straps apart.

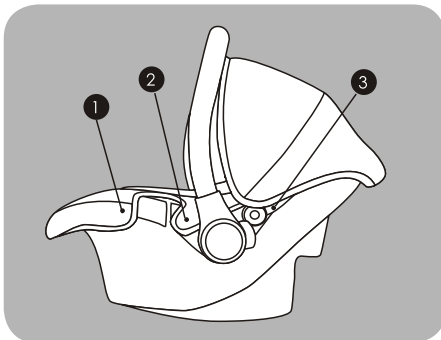


Removing the seat cover

Unhook the shoulder straps at the rear of the seat shell by sliding the straps through the slits in yoke (B). Remove the straps, pulling them out from the front of the seat.



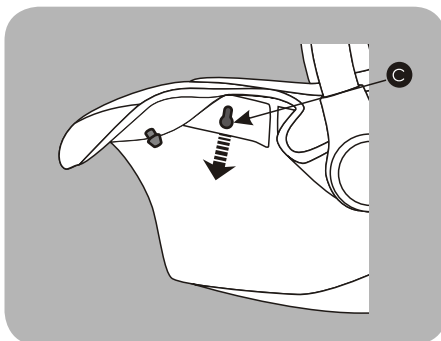
The seat cover is held in place with plastic clips at points 1, 2 & 3 on each side of the child car seat.



Slide the plastic clips down and out of the keyhole slots (C).

Loosen the seat cover all around the edges of the shell. Carefully pass all straps and buckles through the slots in the cover and remove the cover.

To replace: reverse the above steps.



Care and maintenance

1. To clean with a cloth with warm water. Please do not use excessive water. Do not iron or use bleach or any other abrasive material.
 2. Periodically check for loose and broken parts.
 3. Direct exposure to direct light and sunlight for long period may cause fading and discolour the leatherette.
 4. If car seat becomes wet , wipe down the leatherette with soft cloth and keep in a dry place to ventilate .
- hand wash only (only the head hugger not the seat)
 - do not machine wash
 - maximum temperature 30°C
 - handle with care

Customer Services

Leatherette-Prams.Co.Uk

First way,Wembley HA90JD.

Email: info@leatherette-prams.co.uk