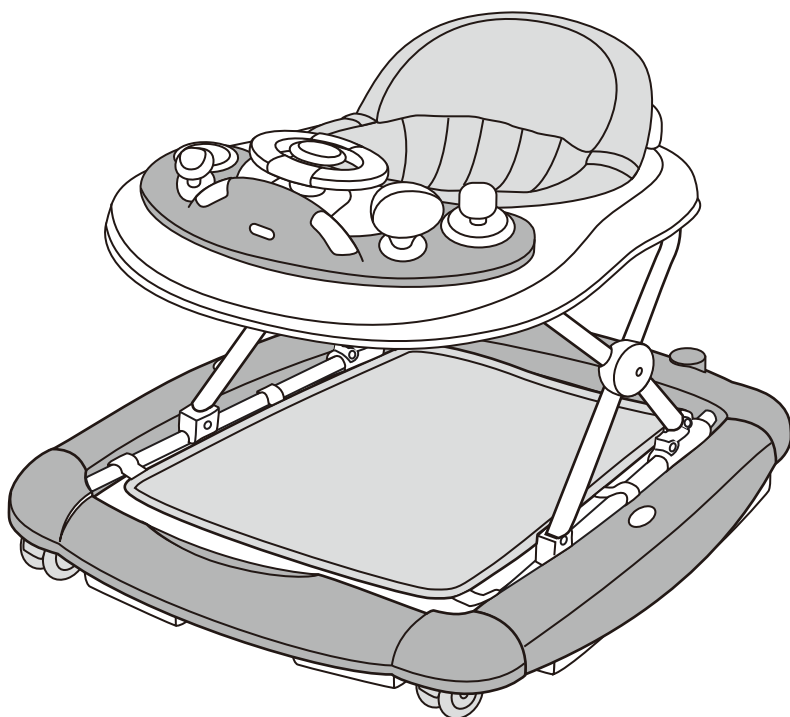


Walk 'n Rock

Baby walker with Rocker

Infant Walker and Electronic Play Tray

Owner's Manual



For BW9388 follow assembly W1005DA2

Read all instructions before assembly and use of the walker.

Keep instructions for future use.

The child may be hurt if you do not follow these instructions.

IMPORTANT! KEEP FOR FUTURE REFERENCE.
WARNING! TO BE ASSEMBLED BY AN ADULT!

Parts List

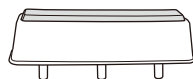
Check that you have all the parts for this model BEFORE assembling your product. No tools required.



A. 2 wheels



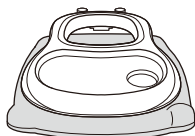
B. 2 rear fix wheels



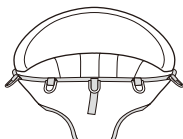
C. 6 safe rubbers



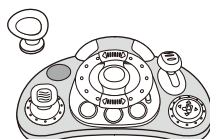
D. Large spoiler



E. Baby walker frame



F. Padded seat



G. Electronic play tray

! WARNING

Read the instructions carefully before use and keep them for future reference. The child may be hurt if you do not follow these instructions.

Before using, remove and dispose of any plastic bags and other packaging (e.g. fasteners, fixing ties, etc.) and keep them out of reach of children.

- Before using, check that the product and all of its components have not been damaged during transportation. Check regularly that the product is not broken or damaged. If the product is broken or damaged, keep out of reach of children.
- The product must only be assembled by an adult. For the correct assembly of the product, please refer to the following instructions.

! WARNING

STAIR HAZARD: Avoid serious injury or death. Block stairs/step securely before using walker even when using parking brake.

- Only use the baby walker frame on flat and stable surfaces.
- Never leave child unattended. Always keep child in view while in walker.

! WARNING

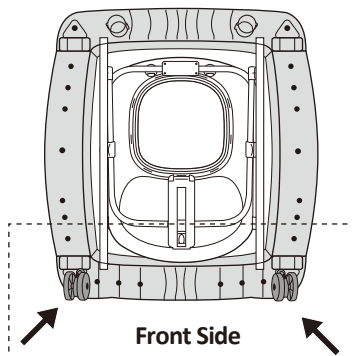
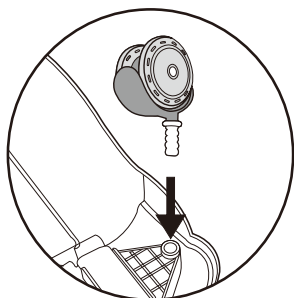
The child will be able to reach further and move rapidly when in the walking frame.

Prevent access to stairs, steps and uneven surfaces, slopes or unstable floors, swimming pools or other sources of water.

- Guard all fires, heating and cooking appliances.
- Remove hot liquids, electrical flexes and other potential hazards from reach.
- Prevent collisions with glass in doors, windows and furniture.
- Do not use the baby walking frame if any components are broken or missing.
- This baby walking frame should be used only for short periods of time (e.g. 20min).
- This baby walking frame is intended to be used by children who can sit unaided, approximately from 6 months. It is not intended for children weighing more than 12Kg.
- Do not use replacement parts other than those approved by the manufacturer or distributor.

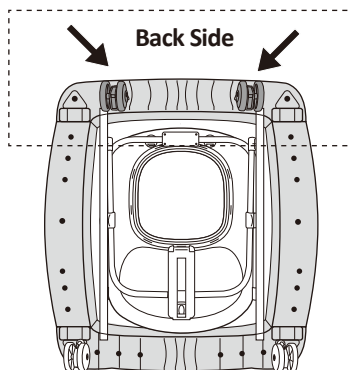
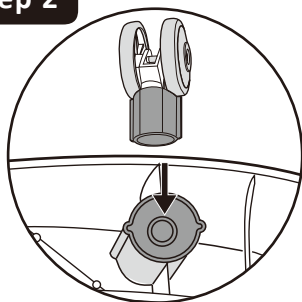
Assembling Procedures

Step 1



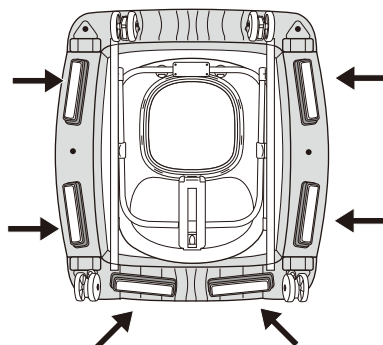
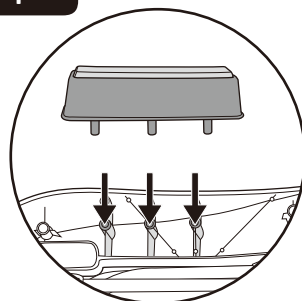
1. Turn the baby walker frame upside down. Fix the wheels in the appropriate housings. Ensure that the wheels are firmly pushed all the way into the housing on the down base of the walker.

Step 2



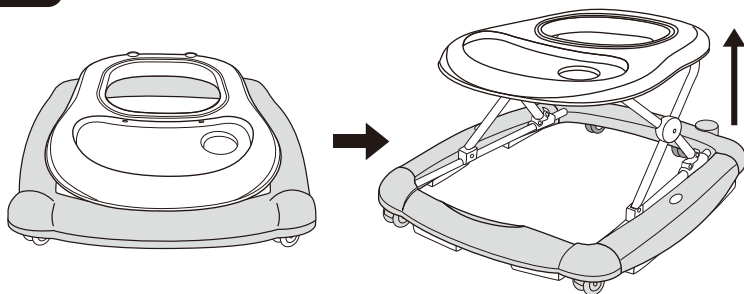
2. Fix the rear fix wheels in the appropriate housings. Ensure that the wheels are firmly pushed all the way into the housing on the down base of the walker.

Step 3



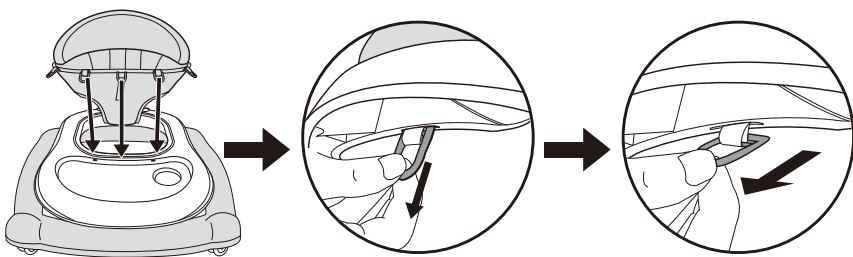
3. Fix the safe rubbers in the appropriate housings. Ensure that the safe rubbers are firmly pushed all the way into the housing on the down base of the walker.

Step 4



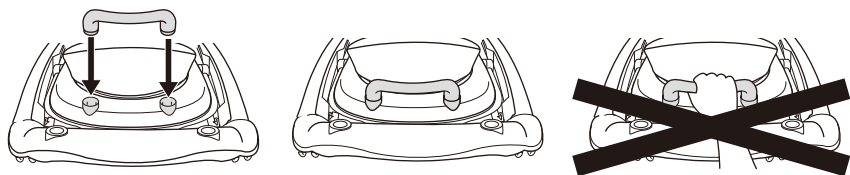
4. Open the baby walker frame in the in-use position, ensuring that all wheels touch the floor. Slowly raise the tray by pulling it in an upward direction, until a click indicates that the frame has been locked correctly in one of the three positions.

Step 5



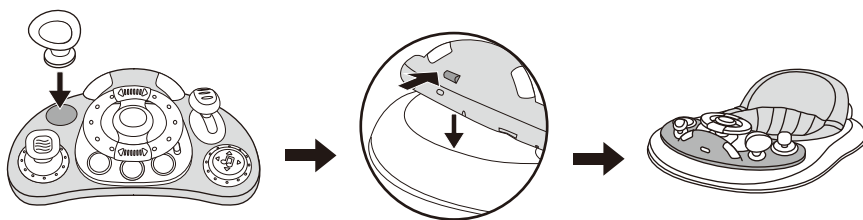
5. Insert the plastic rings of the padded seat in the slots located along the upper edge of the walker frame. Pass the rings through the slots and tug them until they clear the passage, then release them, ensuring that they are correctly locked in the position and cannot recede into the slot.

Step 6



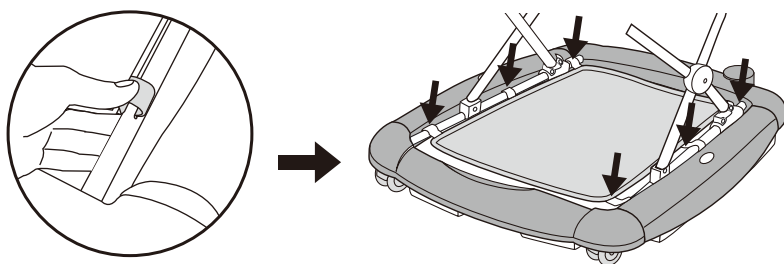
6. Fit the large spoiler on the rear walker frame; simply place it on the housings, located at the rear of the backrest, and push it firmly in a downward direction, ensuring that it has been fitted in the correct position. Please do not lift up baby walker with large spoiler. It is dangerous to do in this way.

Step 7



7. Insert all small toy parts into corresponding holes, then press and hold the front of the toy tray safe buttons, while the toy tray to put on the dinner plate, release the button, then the toy tray is locked.

Step 8



8. Place the hooks on to the tube at the corresponding position to fix the foot rest well when in rocking function.

Step 9



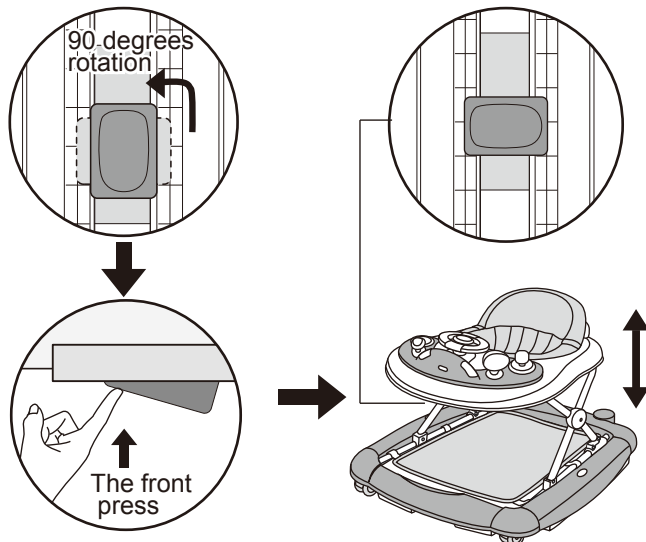
9. Completely assembled.

How to Adjust the Height of Baby Walker Frame

! WARNING

When opening, closing or adjusting the walker, ensure that your child is at a safe distance. Before placing the child in the walker ensure that the secondary lock button is correctly locked again.

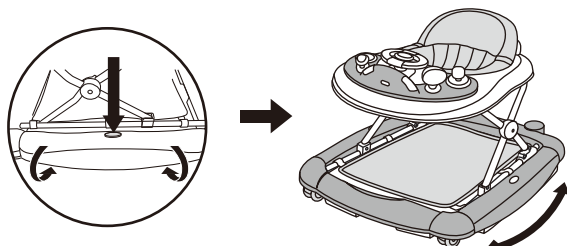
Step 10



10. To adjust the seat's height, remove the child from the baby walking frame, pull up the safe button located under the small tray table and rotate it to 90 degrees. keep the safe button pressed, then raise or lower the small table until the desired position is reached, then pull up the safe button and rotate it to 90 degrees again to lock the small table. (If it is a automatic secondary lock, please make sure the lock rotated to 90 degrees.)

How to Convert Walker to Rocker

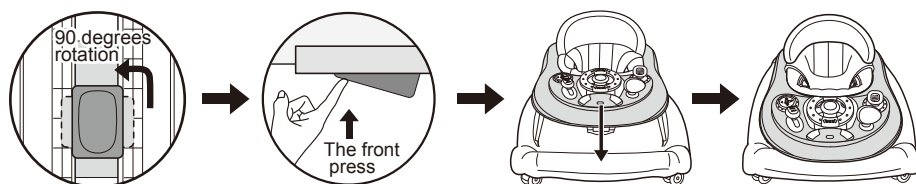
Step 11



11. Use two hands to press the buttons on the two sides and turn over the two side boards 90 degrees, then will changed to be rocking function.

How to Fold the Walker

Step 12



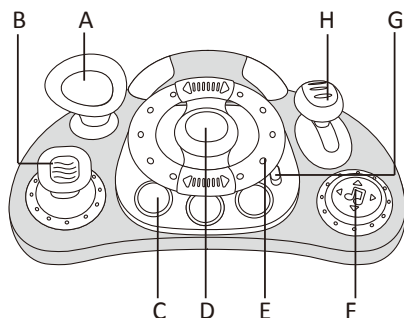
12. Firstly, pull down the button under top tray, make sure the button finally parallel to the adjusted-device (see 1st picture). Meanwhile, press up the front position (see 2nd picture), and press down the top base till the end. The frame folds up completely.

Using Electronic Play Toy Tray

! WARNING

The walker includes one electronic play tray that attaches to the walker frame as shown in step 7. The function and use of the play tray are shown here.

Step 13



- A** Rotate 360 degree to hear click sound.
- B** Turn left to hear startup sound of the car.
- C** Lights up when song starts.
- D** Hear a honk when press down.
- E** Turn 360 degree to hear humorous tune.
- F** Press to hear songs.
- G** Switch to adjust volume, turn on and off.
- H** Push forward to hear throttle sound.

Fitting and / or Replacing Batteries

WARNING

The toy of the walker frame requires 2X"AA" 1.5Volt alkaline type batteries(not included).

- Batteries must only be fitted by an adult.
- To fit and/ or replace batteries: loosen the screw on the battery compartment cover with a suitable screwdriver, press the tab and remove the battery compartment cover. Then remove the spent batteries and fit new ones, ensuring that they have been fitted in the correct polarity, as shown inside the battery compartment. Replace the battery cover and tighten the screw.
- Always keep batteries and tools out of reach of children.
- Always remove spent batteries from the toy to avoid the danger of possible leakage from the battery damaging the product.
- Always remove the batteries if the toy will not be used for a long period.
- Only use alkaline batteries of the same type of equivalent to the type recommended for the correct function of this product.
- Never mix new and old batteries, or different types of batteries.
- Do not burn or dispose of spent batteries into the environment. Dispose of spent batteries at an appropriate differentiated collection point.
- Do not short-circuit the battery terminals.
- Do not attempt to recharge non-rechargeable batteries: they might explode.
- The use of rechargeable batteries is not recommended and cannot be used.

Product Care and Maintenance

- Check regularly the walker frame for signs of damage or wear.
- Clean the plastic parts, including the stoppers, with a damp cloth.
- Clean the seat with brush or family soap and neutral scour
- Dry the metal parts to prevent the formation of rust.
- Prolonged exposure to direct sunlight may cause the fabric to fade.