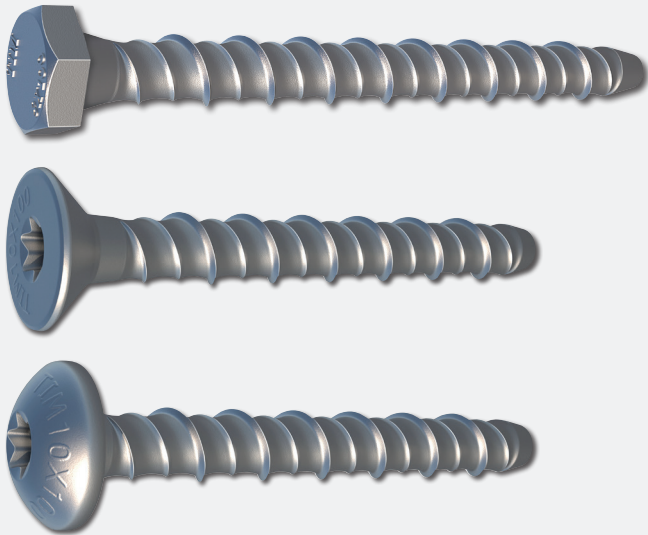


MULTI-FIX BOLTS - HEX HEAD, COUNTERSUNK & PAN HEAD

EXTERIOR

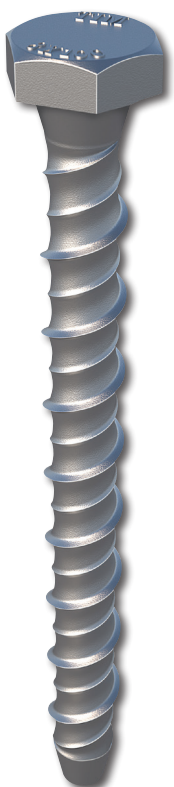


		① ② ③ ④ ⑤ URBAN & INDUSTRIAL AREAS WITH A LOW SALT ATMOSPHERE	 SALT SPRAY TEST 400 hours
		EXTERIOR	 KESTERNICH TEST 3 cycles

- This through fixing is the new solution for heavy duty anchoring into most substrate materials.
- Non-Expanding nature means fixing can be installed closer to the edge of substrates without causing damage.
- Designed to replace traditional anchors such as throughbolts, shield, sleeve and drop-in anchors.
- Removable & adjustable.
- One piece fixing.
- No special tools required.
- All steel, non-flammable fixing conforming to BS 7671 standard's 18th edition, which requires wiring systems to be supported by materials which are unlikely to prematurely collapse in the event of a fire.



FEATURES



- TIMco micro plating (Nano) technology gives a higher resistance to corrosion.
- High low parallel threads for ease of insertion and high pull out values.
- Unique concave thread configuration for ease of insertion and high pull out values

HEX HEAD

- 6mm Bolts include a fixed flange washer for improved clamping.

COUNTERSUNK

- Gives a flush finish.

PAN HEAD

- For improved clamping.
- Serrations under head provide a secure grip.

PRODUCT RANGE - HEX HEAD

Product Code	Size x Length (mm)	Drill Hole Ø (mm)	A/F (mm)	Max. Fixture Thickness (mm)	Fixture Clearance Hole Ø (mm)	Washer Part Code
MF650	6 x 50 *	6	10	20	8	WC8Z
MF675	6 x 75 *	6	10	45	8	WC8Z
MF6100	6 x 100 *	6	10	55	8	WC8Z
MF6130	6 x 130 *	6	10	85	8	WC8Z
MF6150	6 x 150 *	6	10	105	8	WC8Z
MF860	8 x 60	8	15	20	10	WA10Z / WC10Z
MF875	8 x 75	8	15	35	10	WA10Z / WC10Z
MF8100	8 x 100	8	15	60	10	WA10Z / WC10Z
MF8130	8 x 130	8	15	90	10	WA10Z / WC10Z
MF8150	8 x 150	8	15	110	10	WA10Z / WC10Z
MF1060	10 x 60	10	17	10	12	WA12Z / WC12Z
MF1075	10 x 75	10	17	25	12	WA12Z / WC12Z
MF10100	10 x 100	10	17	50	12	WA12Z / WC12Z
MF10130	10 x 130	10	17	80	12	WA12Z / WC12Z
MF10150	10 x 150	10	17	100	12	WA12Z / WC12Z
MF1275	12 x 75	12	19	15	14	WA14Z
MF12100	12 x 100	12	19	40	14	WA14Z
MF12130	12 x 130	12	19	70	14	WA14Z
MF12150	12 x 150	12	19	90	14	WA14Z
MF12200	12 x 200	12	19	140	14	WA14Z
MF16100	16 x 100	16	27	20	18	WA20Z / WC20Z
MF16150	16 x 150	16	27	70	18	WA20Z / WC20Z

* 6mm Bolts include a fixed flange washer for improved clamping.

PRODUCT RANGE - COUNTERSUNK

Product Code	Size x Length (mm)	Drill Hole Ø (mm)	Driver Bit Size	Max. Fixture Thickness (mm)	Fixture Clearance Hole Ø (mm)
MF860C	8 x 60	8	T40	20	10
MF875C	8 x 75	8	T40	35	10
MF8100C	8 x 100	8	T40	60	10
MF1060C	10 x 60	10	T50	10	12
MF1075C	10 x 75	10	T50	25	12
MF10100C	10 x 100	10	T50	50	12

PRODUCT RANGE - PAN HEAD

Product Code	Size x Length (mm)	Drill Hole Ø (mm)	Driver Bit Size	Max. Fixture Thickness (mm)	Fixture Clearance Hole Ø (mm)
MF860P	8 x 60	8	T40	20	10
MF875P	8 x 75	8	T40	35	10
MF8100P	8 x 100	8	T40	60	10
MF1060P	10 x 60	10	T50	10	12
MF1075P	10 x 75	10	T50	25	12
MF10100P	10 x 100	10	T50	50	12

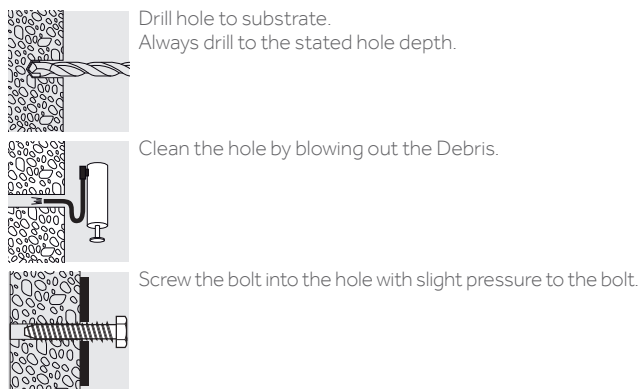
TECHNICAL DATA



Substrate	Concrete $\geq 25\text{N/mm}^2$						Fletton Brick 30N/mm^2			Cheshire Brick 45N/mm^2			Class B Eng. Brick 75N/mm^2					
	6	8	10	12	16	16	6	8	10	6	8	10	6	8	10			
Size (mm)	6	8	10	12	16	16	6	8	10	6	8	10	6	8	10			
Length (mm) L	50-75	100-150	All	All	All	All	-	-	-	-	-	-	-	-	-			
Drill Hole Ø (mm) d_0	6	6	8	10	12	16	6	8	10	6	8	10	6	8	10			
Min Embedment Depth (mm)	30	45	40	50	60	80	30	40	50	30	40	50	30	40	50			
Min Over-drill for dust (mm)	10	10	15	20	25	35	10	15	20	10	15	20	10	15	20			
Min Drill Hole Depth (mm) h_0	40	55	55	70	85	115	40	55	70	40	55	70	40	55	70			
Min Centre Spacing (mm)** s_{min}	90	140	120	150	180	240	-	-	-	-	-	-	-	-	-			
Min Edge Distance (mm)** c_{min}	45	70	60	75	90	120	-	-	-	-	-	-	-	-	-			
Min Structure Thickness (mm) h_{min}	60	100	90	110	125	175	-	-	-	-	-	-	-	-	-			
Performance at Standard and Deeper embedment depths																		
Effective Embedment depth (mm) h_{ef}	30	45	40	60	50	75	60	85	80	30	40	50	30	40	50	30	40	50
Rec. Tensile Load (kN) N_{rec}	2.44	6.23	3.93	8.36	5.49	12.21	8.97	13.00	13.5	2.28	2.68	3.18	1.36	2.19	3.26	3.49	4.33	-
Max Rec Load (Kg)	244	623	393	836	549	1221	897	1300	1350	228	268	318	136	219	326	349	433	-

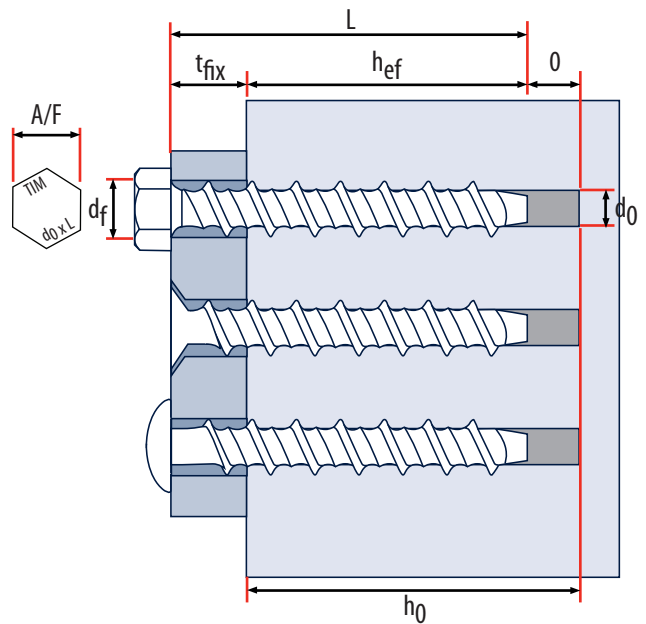
** Centre spacings and edge distances are based on minimum embedment only.

INSTALLATION GUIDELINES



INSTALLATION DATA

Anchor Size (mm)	6	8	10	12	16
Length (mm) L	50-75	100-150	60-150	60-150	75-200
A/F Socket Size (mm) Hex Head	10	10	15	17	19
Hole Ø in substrate (mm) d_0	6	6	8	10	12
Min. Embedment Depth (mm) h_{ef}	30	45	40	50	60
Fixture Clearance Hole Ø (mm) d_f	8	8	10	12	14
Max. Fixture Thickness (mm) t_{fix}	Length - Embedment Depth (L-E)				
Over Drill Depth (mm) 0	10	10	15	20	25
Drill Hole Depth h_0	Length - Actual Fixture Thickness + Over Drill Depth				



A/F	Across Flats
d_f	Head Diameter
d_0	Drill Hole
t_{fix}	Maximum Fixture thickness

L	Length
0	Min. Over Drill Depth
h_{ef}	Minimum Embedment Depth
h_0	Minimum Drill Hole Depth