



PLUTO satisfies the growing need for easily accessible mobile device charging in informal areas, with a unique combination of style and function. Perfectly suited to breakout areas, smaller meeting rooms and coffee tables, in offices, hotels, and other public spaces - PLUTO makes sharing power a pleasure.

Infinitely customisable in appearance PLUTO is available from stock in white, black and 8 vibrant satin colours, with other paint and immersion graphics finishes to special order. As well as the perfect colour or pattern to match any interior design scheme, PLUTO can be screen printed with your own or your customer's brand name or logo.

PLUTO can be securely clamped to a standard 80mm desk grommet hole, screwed to any suitable surface, or supplied with side entry power cord and rubber feet for free standing use.

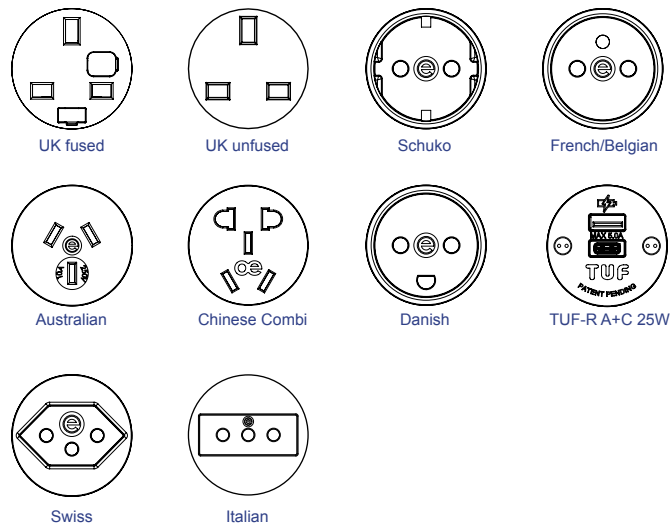
USPs

- 360° socket access
- Extensive colour, screen print and immersion graphics options
- Wide range of international power socket options
- Optional OE Electrics TUF charger
- Fixed or freestanding mounting
- Optional Data Cartridge



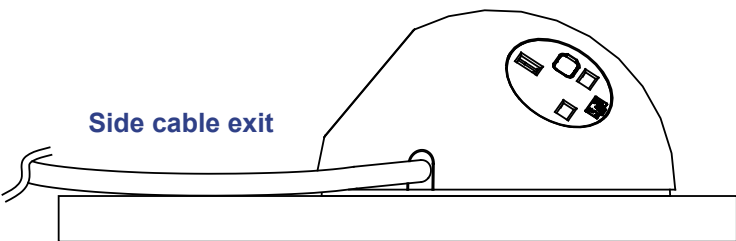
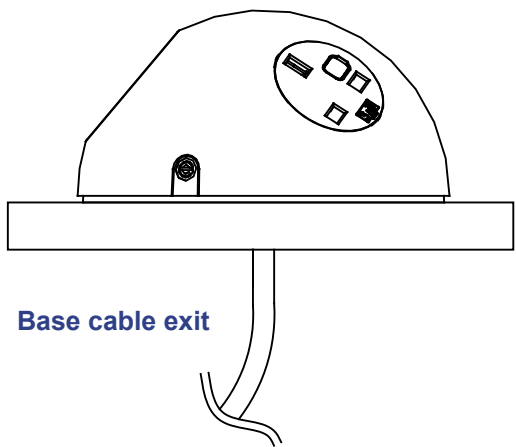
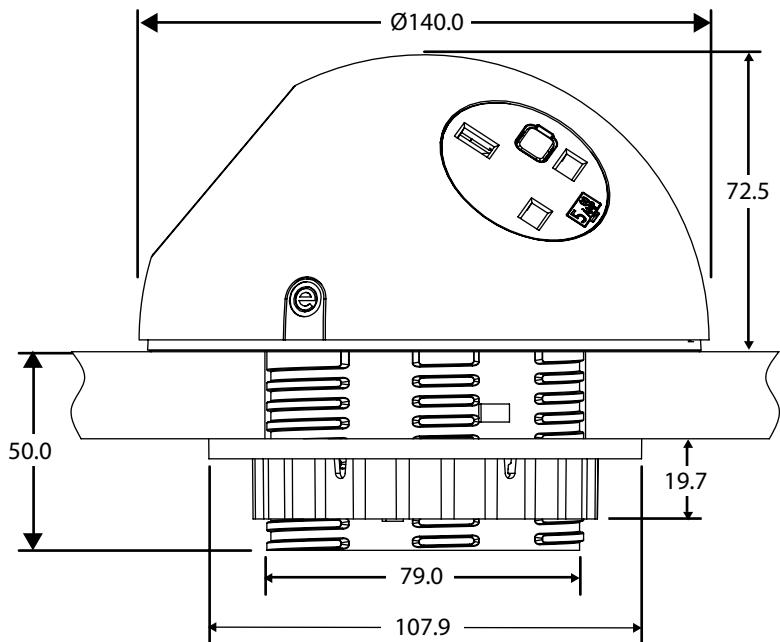
technical

Common Modular Components



We stock a variety of other modular components. Please enquire for specifics.

Dimensions



Configuration:

PLUTO's 3 socket apertures may be configured with a combination of AC power and USB charging sockets. For Data, USB, HDMI, VGA and sound connections, the optional Pluto Data Cartridge provides 5 inputs.

Construction:

High strength 5VA fire retardant "Lexan 943" polycarbonate enclosure. OE 46mm modular polycarbonate power socket fascias.

Colour options:

PLUTO is supplied as standard in a "polished" white RAL 9003 moulded finish with grey or black sockets. Pluto can also be ordered in a wide range of painted or immersion transfer printed finishes and with Pad printed logo's.

Earth Bonding:

A discreet 'easy-connect' 6.3mm spade type earth terminal is fitted as standard in base of unit for the attachment of an external earth bonding lead.

Fusing:

To enable compliance to BS6396, UK fused sockets are fitted with 5 x 20mm anti-surge ceramic fuses, with colour-coded fuse clips to denote the rating (3.15A/5A).

Testing:

All PLUTO units are manufactured using ISO9001 quality controlled components and practices and are 100% electronically tested before dispatch:

- Visual: Configuration and appearance.
- Power sockets: Continuity, polarity, insulation & earth
- USB charger: Output voltage and resistance

Soft Wiring (power)

Base or side entry power cord hardwired to mains AC plug, or hardwired to male Wieland GST connector for "soft wiring" e.g. connection to an under desk module or to mains supply socket via a starter cable.

Certifications

BS5733-2010 plus A1:2014
UL962A/CSA22.2 and UL1363 (ETL listed)

CE Marking

All units built with UK and European socket types are CE marked by OE Electrics

Colours

Standard colour

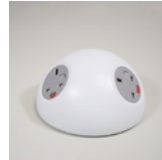


Polished white

Standard painted finish*



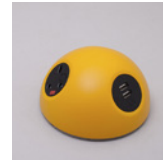
Satin black



Satin white 9003



Satin yellow



Satin light orange



Satin orange



Satin red



Satin pink



Satin dark blue



Satin light blue



Satin light green

PLUTO is available from stock in unpainted “polished” white or in a range of 10 tough satin textured paint finishes and can be fitted with black or grey sockets.*

In addition PLUTO is available to special order in satin, gloss, or soft touch paint finishes in your choice of RAL colour.

For an extra special PLUTO we can immersion transfer print the pluto dome in a wide range of designs, or personalise it with pad printed logos.

For the final touch, you can then compliment your customised PLUTO design with optional LED base lighting, available in a choice of red, blue, green, or white.

To find out more about tailoring PLUTO to suit your needs, please call our customer support team.

Example special colours*



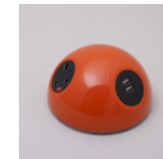
Gloss black



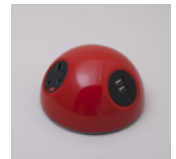
Gloss yellow



Gloss light orange



Gloss orange



Gloss red



Gloss pink



Gloss dark blue

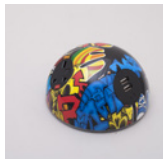


Gloss light blue



Gloss light green

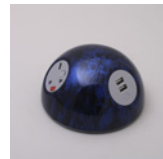
Example custom patterns*



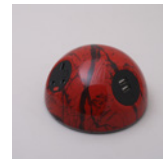
graffiti



yellow flames



black skulls blue



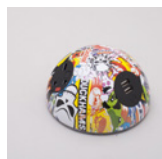
black marble red



leopard print



brown marble



sticker effect



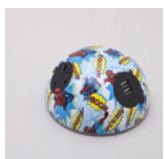
carbon fibre



black water droplets



burled walnut



spiderman



floral



white marble green



blue water droplets



blue camo



pearlescent



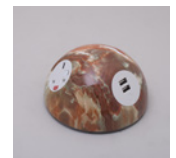
black marble



black skulls red



natural camo



light brown marble

*Please note colours may vary on monitors.

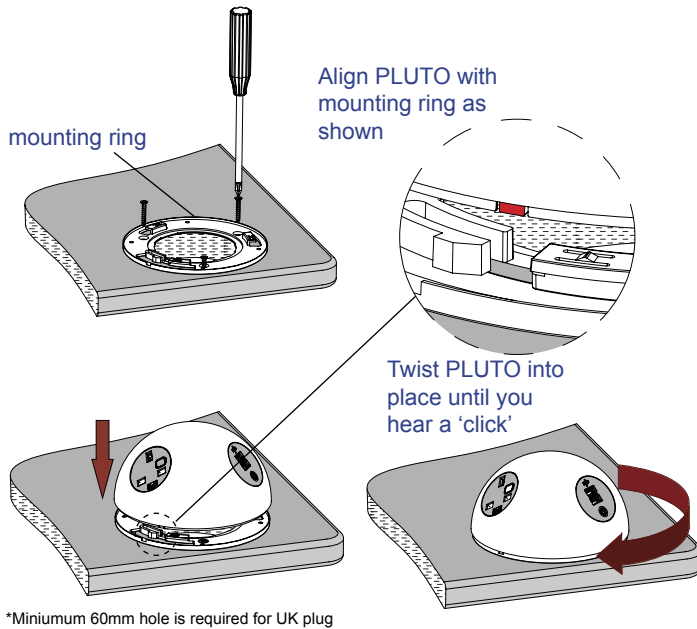
*UK and TUF sockets are also available in white. US Nema is only available in black

Installation

Base power cord entry PLUTOs are supplied as standard with the "clamp 80" kit for secure mounting to an 80mm grommet hole. For screw fixing Pluto can be ordered with just the bayonet mounting ring.

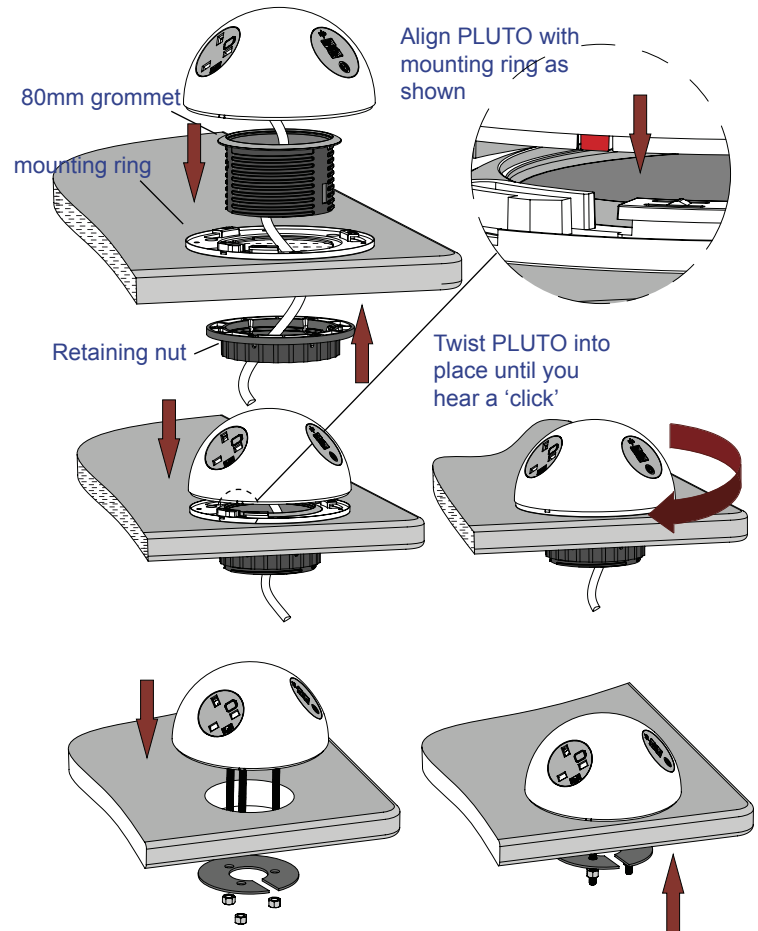
PLUTO mounting adaptor ring screw fixing

Place mounting ring over 50-80mm* hole.
Screw mounting ring in place.



PLUTO Clamp 80 Kit

Place mounting ring over 80mm hole. Place 80mm grommet into mounting ring and screw up retaining nut until firmly in place.

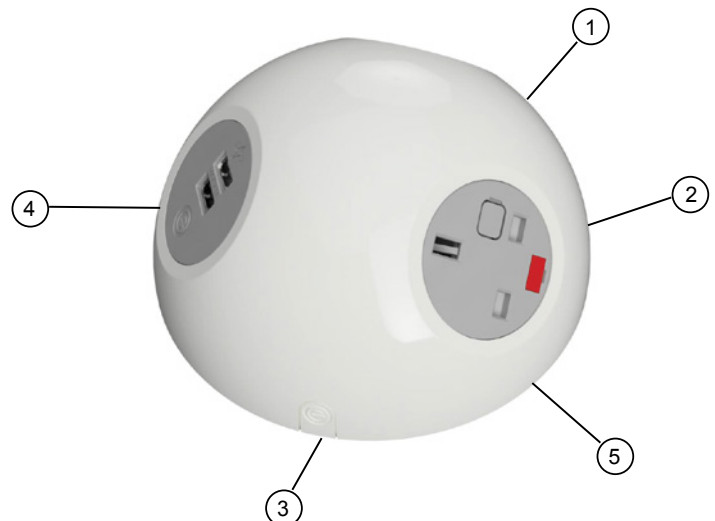


PLUTO Clamp 60 Kit

PLUTO Clamp 60 comes pre fitted with bolts to ensure a more secure fixing. Place PLUTO over 60mm hole feeding the bolts through. Use the retaining plate and nuts to securely fix the PLUTO in place.

Features

1. 140mm diameter hemisphere
2. Power socket outlet (up to 3)
3. Side exit for power cable only
4. Power socket can be substituted with USB
5. Power can exit via the base



pluto data cartridge



The Pluto Data Cartridge has been designed to add additional data and AV connectivity to the standard Pluto power module and is thus an exciting new option for meeting tables where a traditional in-desk unit is not suitable.

The Data Cartridge simply bayonet fits to the Pluto base and therefore can be supplied pre-fitted to new Pluto's or for retro fitting to existing base exit units. Just like the standard Pluto, a Pluto with the Data Cartridge fitted simply clamps into an 80mm grommet hole without the need for tools.

The Data Cartridge is finished in satin silver textured paint which contrasts well with both the standard white Pluto dome and our wide range of Pluto colours.

The Data Cartridge incorporates:

- 3 x Keystone apertures for any combination of Data, USB, HDMI, Sound.
- 1 x knock out for fitting a VGA cable
- 1 x knock out for fitting a Display Port cable
- Secure cable tie points for data and Av cables



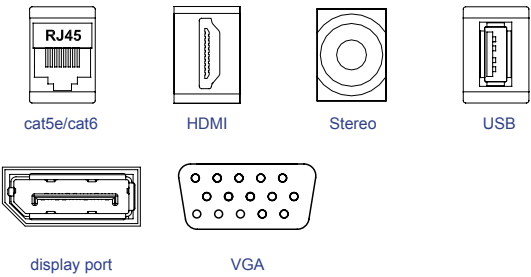
The Data cartridge can be ordered fully configured with data/AV cables, or on its own for site installation of data/AV

USPs

- Adds 5 additional data/AV sockets to Pluto
- Tool free bayonet fixing
- Can be retrofitted to existing base exit Pluto units
- Satin silver textured finish

technical

Common Modular Components⁺



Features

Configuration:

Data only / AV only / Combined (Data & AV)

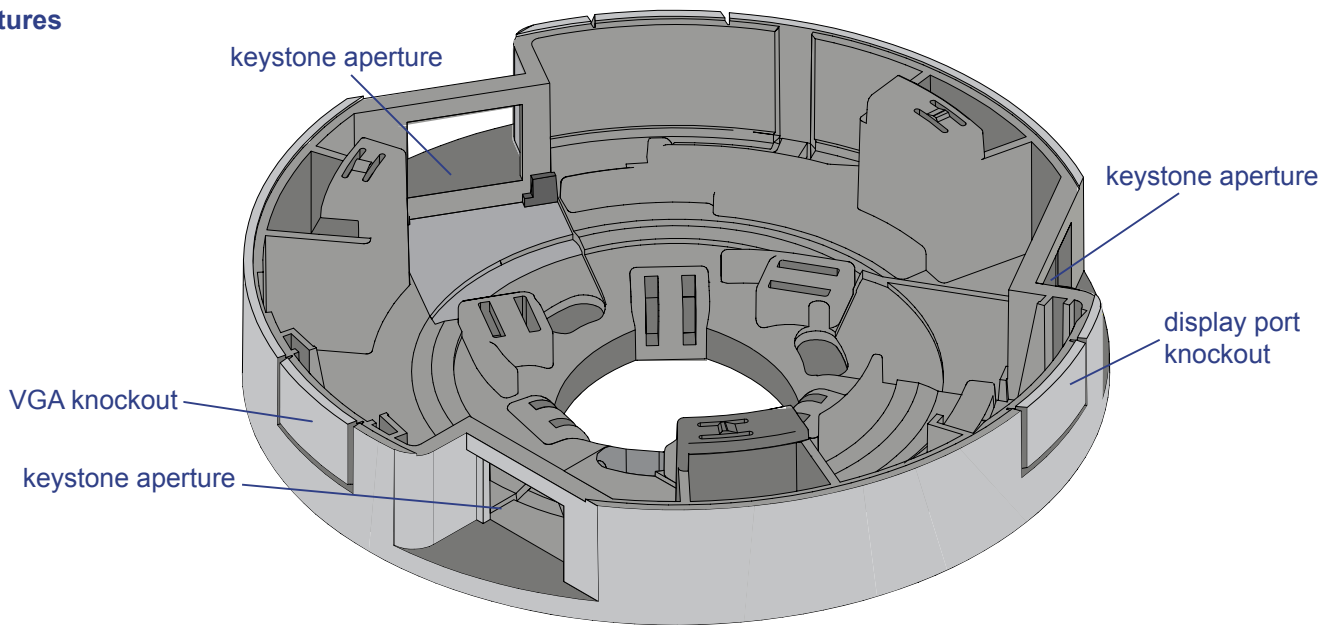
Testing:

100% testing

Colours

Satin textured silver only

Features



Fitting

