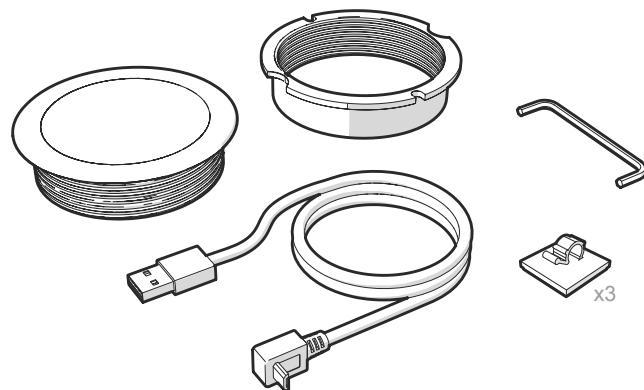


arc⁸⁰
ADVANCED RESONANT CHARGER



oeelsafe

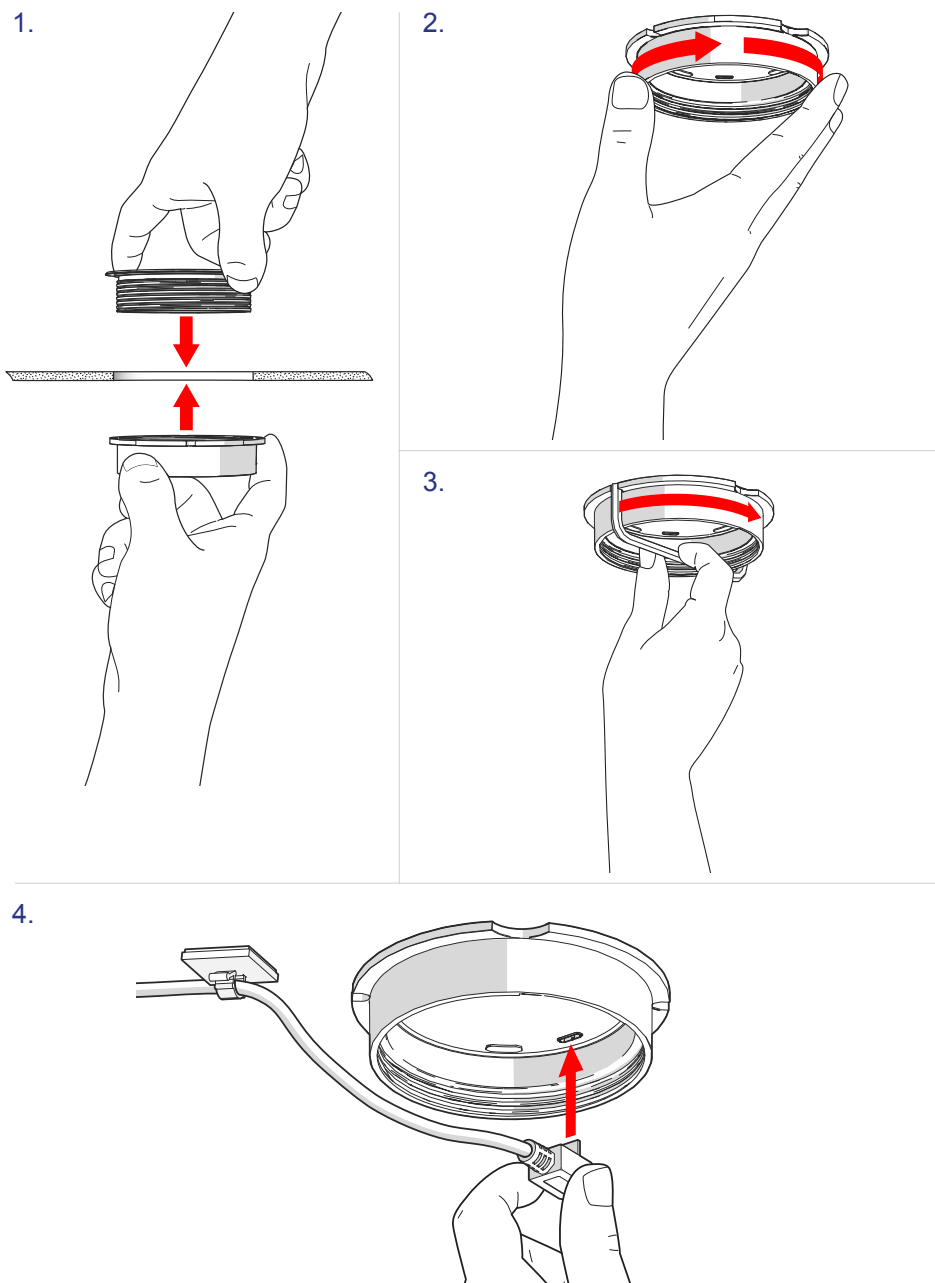
www.oeelsafe.com.au | +61 2 9454 7500

oeelectronics

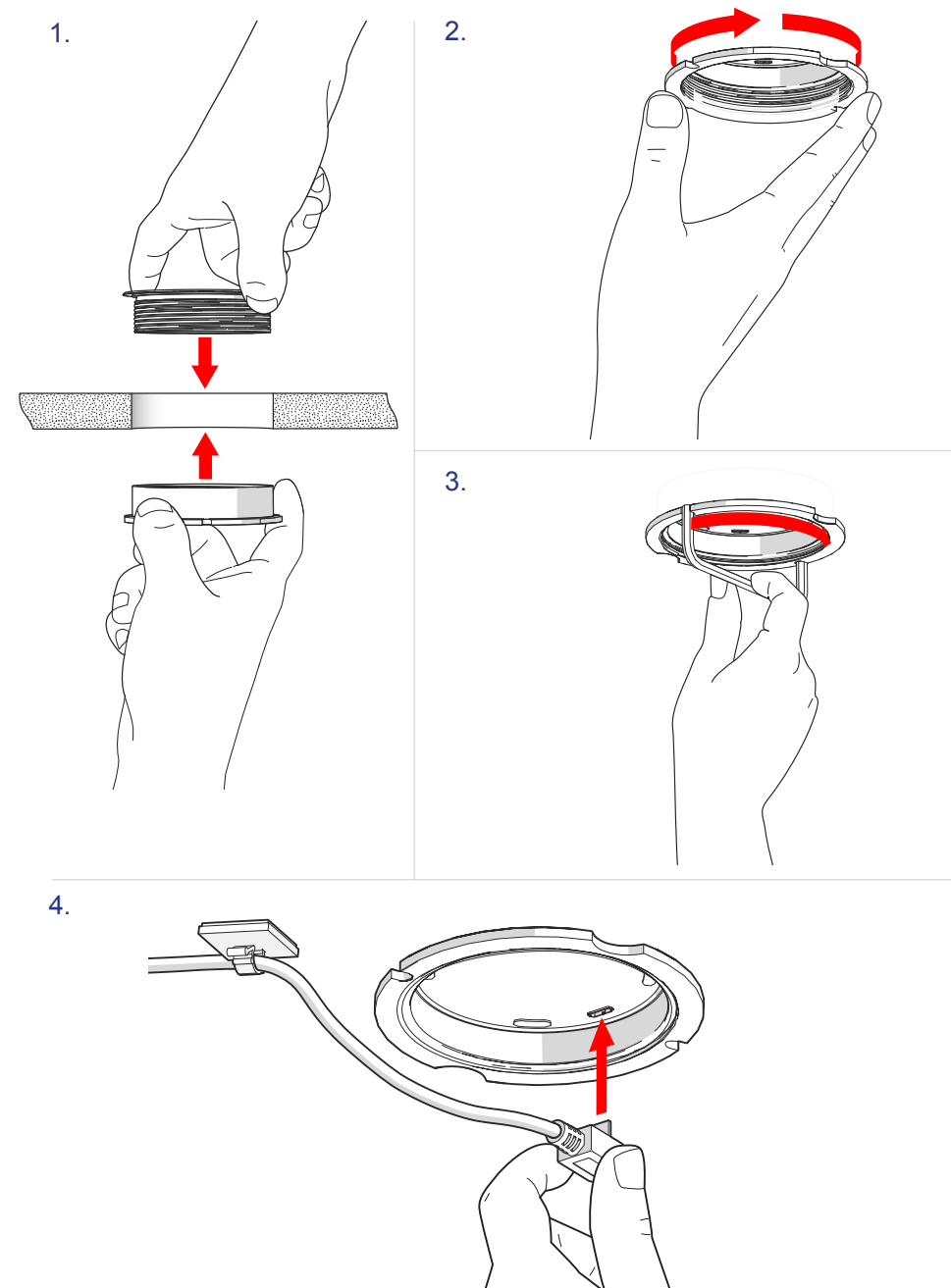
www.oeelectronics.co.uk | +44 (0) 1924 367255

Installation manual

For surfaces 2-18mm thick



For surfaces 18-35mm thick



Lose those annoying
cables and get charging
with arc⁸⁰

Simply rest your wireless
compatible phone on
our wireless charger for a
fast convenient charge

Specifications

Output Power	10W (DC5V 1A / 9V 1.1A)
Input Power (Charger)	15W Max (DC5V 2A / 9V 1.67A)
Input Power (Plug Pack)	100-240VAC, 0.5A
Standby Power	0.45W
Charging Z- Distance	0-8mm (coil to coil)
Surface Cutout Size	Ø80mm
Surface Thickness	2-35mm (Reversible fixing collar for 2-18 and 18-35mm)
Certification	Qi, CE
Housing Material	Anodised Aluminium
Available Colours	Black centre with a black anodised aluminium rim and silver edge. White centre with a silver anodised aluminium rim and silver edge.
In the box	1m cable, cable clips & installaton tool.