

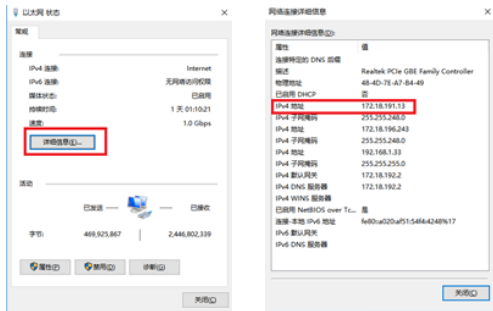
IP Camera Quick Start Guide

1.Network Settings

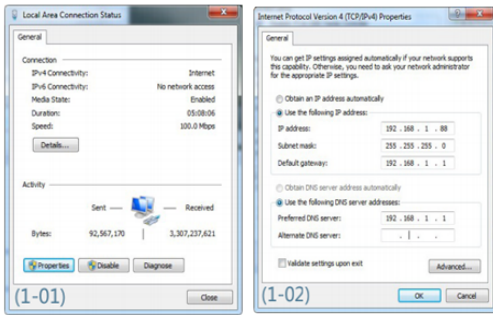
The IPv4 address of the PC needs to be in the same network segment as the IP address of the IP camera so that it can be used normally. Specific settings window system can refer to the following methods:

Method one :

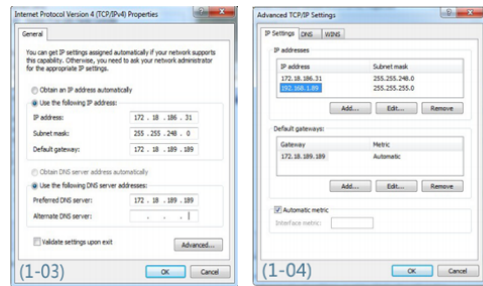
④ Check the IPv4 address of PC Click 【Start】 / 【Control Panel】 / 【Network and Internet】 / 【Network and Sharing Center】 / 【Local Network】 / 【Details】



⑤Set the PC IPv4 address(E.g PC:192.168.1.168)



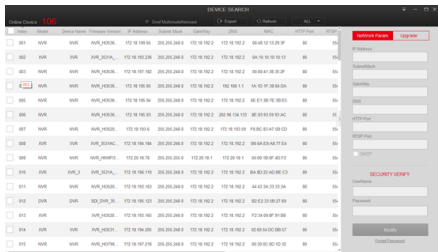
⑥Add the IPv4 address the same network segment as the IP camera's.(E.g PC:192.168.1.89)



Note:The IPv4 address can not be conflicted when you set of add in LAN

Method Two :

Use the IP search tool 6.1.4.2 and above to change the searched IP camera to the same network segment as the PC (Note: The default IP address of the IP Camera: 192.168.1.168; Default Username: admin, default password: admin; the changed URL can not conflict with the IP address of other devices in the LAN).

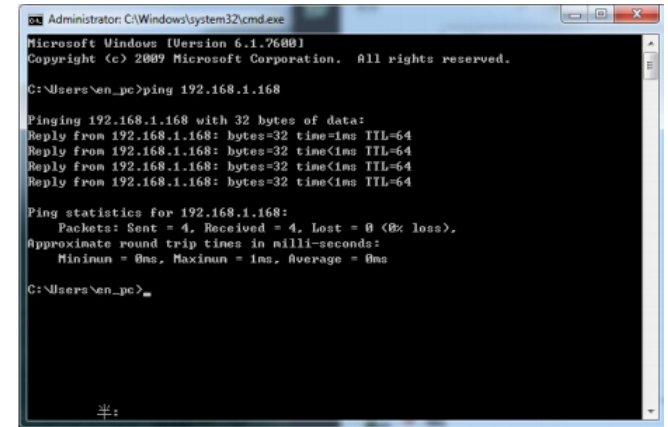


2.Ping IP address of IP camera

①Connection the IP camera and PC to the same Local Area Network with the network cable and power up all the equipments.



②Left click 【Start】 (or use shortcut key "win button+R")→input"cmd"→press"Enter" button of keyboard to pop up the command prompt window→input"ping *** ***) and then press the Enter key to check the system statistic connection information(For example,the IP adress of IP camera is 192.168.1.168,please input "ping 192.168.1.168").Ping statistics like these means that the signal communication of the PC and IP camera is normal,your IP camera works normally,as shown below.



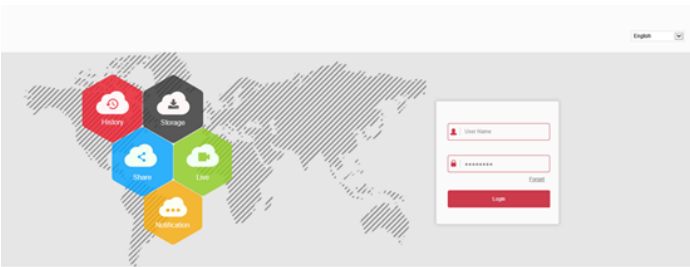
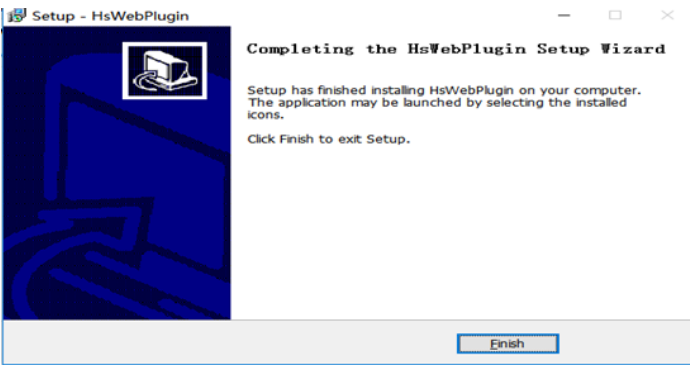
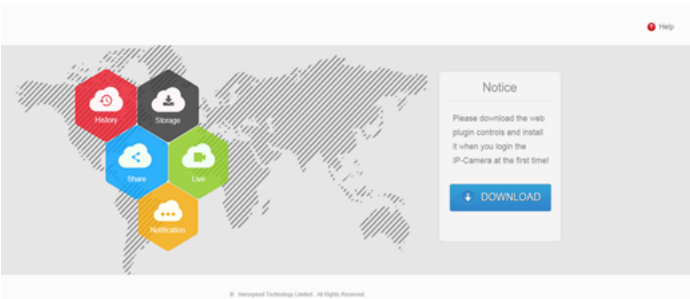
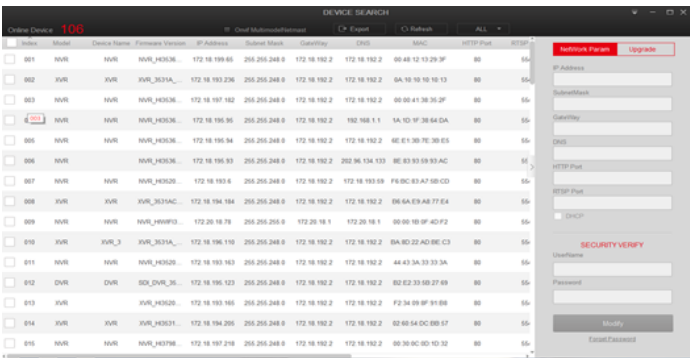
3.Download and Install WebPlugin

For first time use,please download and install the ActiveX.

③Click "IP Search" "tool to pop up the search interface,click"Search" to search out the connection devices.(Refer to Fig 3-1).

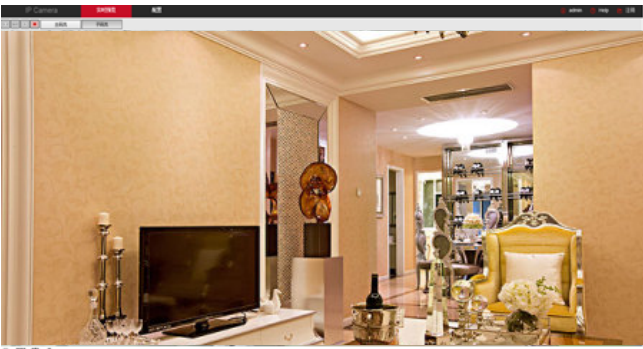
④In the devices's list,double click the devices you want to play,webpage will be opened automatically(login webpage or ActiveX download webpage,for first time use,you are required to download and install the ActiveX,after installation finished,refresh the webpage to get the login webpage).(Refer to Fig 3-2/3-3).

⑤On login webpage,input User name and Password of the device (Strongly suggest you to modify the user name and password to improve security level for the first login).(Refer to Fig 3-4):

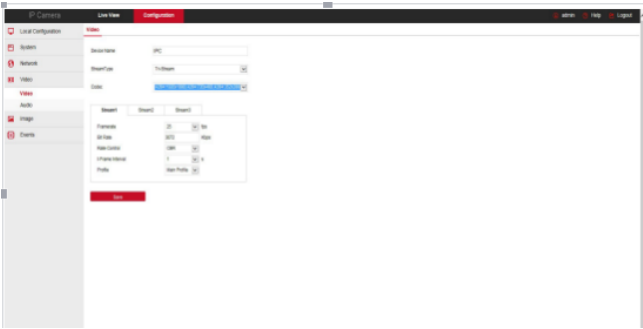


4.Live Preview and Parameters configuration

①Enter user name(default:admin) and password(default:admin) of the IP camera on browser user interface,you can see the Live preview image.On login webpage,input User name and Password of the device to login,you will see the Live preview image.



②Click 【configuration】 to enter the configuration settings of the device ,you can set:local configuration/system/local network/video/im-age/event and so on.Users can set the parameters according to the actual application,to achieve better performance.For detail settings please refer to the <IPC ActiveX_PX User Manual>.



5.Add devices

Connect IPC to NVR with network cable,make sure the IP address of NVR and IPC is in the same network segment and not conflict.
①On the NVR main menu(Fig 5-1),please click[Camera] enter into Camera Setup page.
②Click [Search] to search out the connected devices(Fig 5-2).
③From the search out list,tick the devices you want to add,click[Add] to add the devices to Device binded list(Fig 5-3).
④Click [Confirm] to get the live image(Fig 5-4).



5-1



5-2



5-3



5-4

Under NVR main menu,you can also make these settings:Recording,Play-back,Motion Detection and so on.

6.FreeIP Download

Download and install FreeIP on your smart phone by following way:
(1) IN the Android phone Google App Store or iphone App Store enter “FreeIP” search,download and install.
(2) Search the following QR codes to download and install the App.
(3) Download from the following websites.

Android App :
http://www.freeip.com/some_file/Freeip.apk



Android App

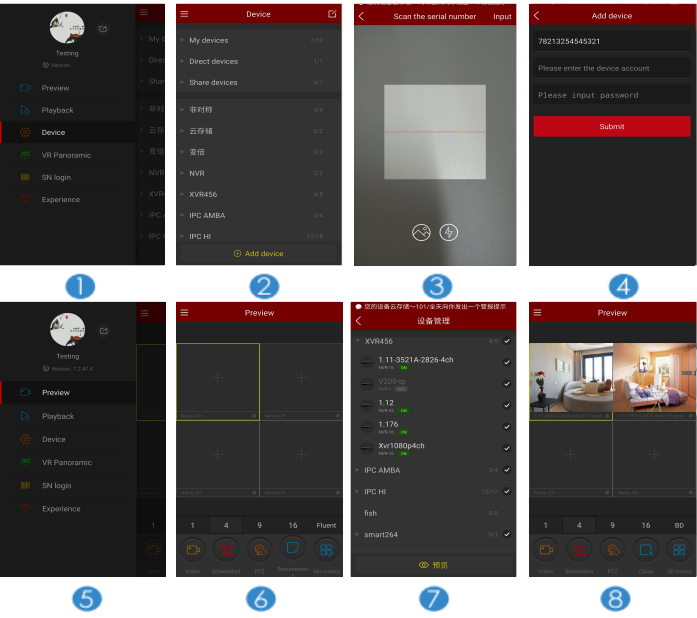
iOS App :
<https://itunes.apple.com/cn/app/freeip/id898690336?mt=8>



iOS App

7.Add devices on FreeIP App

Open the FreeIP app(New users please register an account),follow up the following steps to add the devices.



①Click 【Device】 to add the device.
②Click the bottom of the interface 【+Add device】 ,select “The serial number to add”into the QR code scanning interface.
③Scan the QR code printed on the device sticker or posted on the webpage to add the device.
④Input device user name and passwordand verification code, verification code printed on the random shipping standard label, click 【Submit】 , set device name, select group, click 【Add】 .
⑤Click 【Preview】 in the sliding menu.
⑥Click 【 】 to enter 【Device】 interface.
⑦In 【Device】 ,please choose the device you want to preview,then click 【Preview】 .
⑧You can choose different definitions in the preview interface.