

# › Product Guide - Van & minivan accessories

2020





› **Bring your life**

Whether it's exploring spectacular nature in the great outdoors or travelling the world with family and friends, we all have a passion for enjoying an active life.

At Thule, we share your desire to spend more time enjoying our passions – which means less time worrying about how to bring all the stuff we need. In this catalogue we've collected all our van accessories, but that's just a small part of everything that's Thule. Thule is also a part of Thule Group, a collection of international brands that have one common mission: develop smart ways to simplify your active life.

Wherever your passion takes you, whatever you're bringing.  
With Thule products, you're free to live your active life to the full.

**04**

- Roof Rack System**  
Take all your belongings with you
- |                                |    |
|--------------------------------|----|
| Roof Rack                      | 8  |
| Telescopic Ladder              | 12 |
| Magnetic kit for wall fixation | 13 |



**52**

- Storage**  
Perfect ways to store your belongings
- |                  |    |
|------------------|----|
| Organizers       | 56 |
| Fixation Systems | 57 |
| Boxes            | 58 |
| Basket           | 59 |
| Cargo            | 59 |



**14**

- Space**  
Create more outdoor living space
- |                    |    |
|--------------------|----|
| Awnings            | 18 |
| Awning Accessories | 25 |
| Smart Panels       | 26 |
| Tents              | 28 |
| Tent Accessories   | 34 |



**36**

- Sports Gear**  
Special carriers to bring your sports gear
- |                    |    |
|--------------------|----|
| Bike Racks         | 40 |
| Water Sport Racks  | 46 |
| Winter Sport Racks | 50 |



**60**

- Comfort & Security**  
Optimal safety and security during your trip
- |          |    |
|----------|----|
| Steps    | 64 |
| Levelers | 65 |
| Locks    | 66 |



**70**

**Technical Specifications**





## › Roof Rack System

Travelling with a van means freedom: you can go wherever you want, whenever you want. Space is mostly limited in a compact vehicle but thanks to our flexible Thule roof rack system you can easily take all your belongings with you.





# Roof Rack System - Line at-a-glance

Roof Rack



Thule SmartClamp System

 Roof rack mounting system



Thule ProBar Flex

 Flexible load bars

Telescopic Ladder



Thule Van Ladder 9 Steps

  Ladder for roof access



Thule Ladder Fixation Kit

  Magnetic kit for wall fixation



# Roof Rack

## Thule SmartClamp System

### Easy-to-install roof rack base rails for vans\*

This roof rack system is a versatile piece of equipment, that is emphasised by its wide range of additional accessories. Equipped with features allowing full optimisation for different activities, the strong endurance makes it possible to use during all seasons.

#### Thule SmartClamp System

Easy installation without drilling by mounting the smart clamps to the van's existing fix points. The two base rails are glued onto the vehicle roof and connected with the smart clamps to perfectly integrate with the vehicle roof.

#### Thule ProBar Flex

Option to add two or more load bars, allowing fitting of Thule ProBar roof accessories. The load bars can be positioned anywhere along the base rails in function of the combination of accessories on the roof. Available in 2 different heights and the load bars are lockable with a key to prevent theft.

#### Awning adapter

With or without the roof rack, the awning adapter can easily be mounted on the roof or on the roof rack without drilling. The adapter covers under the awning provide a complete finishing and integration with the vehicle.



### + Add to your Thule ProBar Flex



#### Thule Omnistor 6300

Create a shelter by expanding the roof rack with an awning. See p.18

#### Thule Force XT

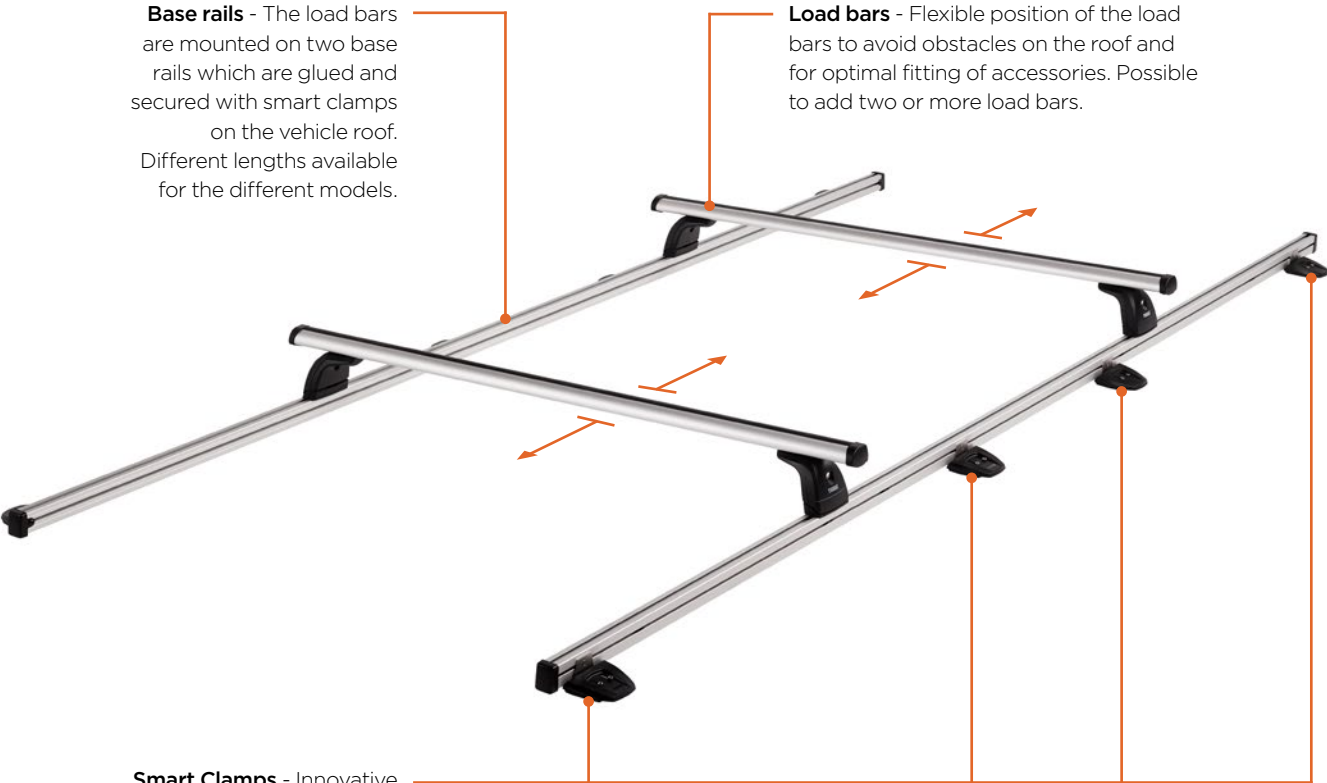
Versatile roof-mounted cargo box for everyday use. See p.58

Discover more possibilities to expand your roof rack. See p.38

\*Suitable for H2 Ducato | Jumper | Boxer vans from 2007 onwards

# Roof Rack

## Thule SmartClamp System



**Base rails** - The load bars are mounted on two base rails which are glued and secured with smart clamps on the vehicle roof. Different lengths available for the different models.

**Load bars** - Flexible position of the load bars to avoid obstacles on the roof and for optimal fitting of accessories. Possible to add two or more load bars.

**Smart Clamps** - Innovative fastening pieces to install the base rails on the existing fix points of the vehicle without drilling.

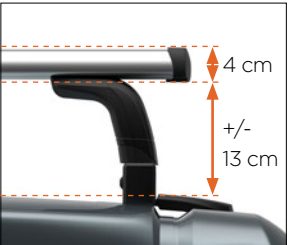
NOTE - The roof should be clear of obstacles within 10 cm from the fix points



## Thule ProBar Flex

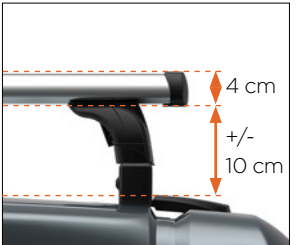


Roof rack load bars for vans, allowing fitting of Thule roof accessories. Available in two different heights.



**Thule ProBar Flex - High**  
Set of 2 high load bars.

301647  
Aluminium



**Thule ProBar Flex - Low**  
Set of 2 low load bars.

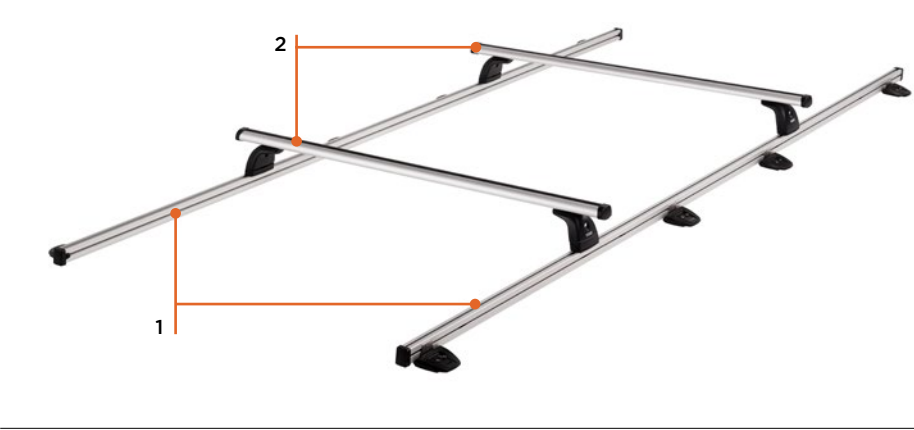
301648  
Aluminium

NOTE - Maximum loading weight of 75 kg per set of load bars



Roof Rack - Fit Guide

I would like > a roof rack

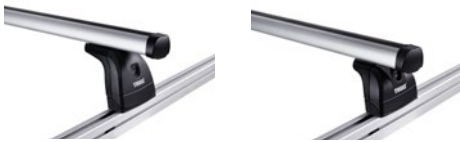


1 Install the Thule SmartClamp System

- Base rails + smart clamps

Ducato • Jumper • Boxer L2H2 (L: 5.4 m - H: 2.5 m)	301640
Ducato • Jumper • Boxer L3H2 (L: 6.0 m - H: 2.5 m)	301641
Ducato • Jumper • Boxer L4H2 (L: 6.4 m - H: 2.5 m)	301642

2 Choose the type of load bars (2 pcs)



Thule ProBar Flex - High	301647
Thule ProBar Flex - Low	301648

I would like > an awning + roof rack



1 Choose your Thule Omnistor 6300 Pack

- Awning + adapters + sealing + covers

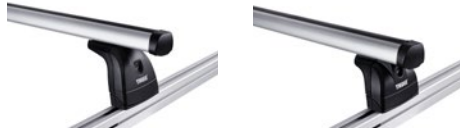


2 Install the Thule SmartClamp System in combination with an awning

- Base rails + smart clamps + awning adapter connection

Ducato • Jumper • Boxer L2H2 (L: 5.4 m - H: 2.5 m)	301643
Ducato • Jumper • Boxer L3H2 (L: 6.0 m - H: 2.5 m)	301644
Ducato • Jumper • Boxer L4H2 (L: 6.4 m - H: 2.5 m)	301645

3 Choose the type of load bars (2 pcs)



Thule ProBar Flex - High	301647
Thule ProBar Flex - Low	301648

Roof Rack - Fit Guide

I have a Thule awning > would like to expand with a roof rack



1 A The awning is installed with the new adapter (> 2017) for Ducato

- Single piece adapter 301649/301650

1 B The awning is installed with the old adapter (< 2017) for Ducato

- Two-piece adapter

2 A Install the Thule SmartClamp System in combination with an awning

- Base rails + smart clamps + awning adapter connection

Ducato • Jumper • Boxer L2H2 (L: 5.4 m - H: 2.5 m)	301643
Ducato • Jumper • Boxer L3H2 (L: 6.0 m - H: 2.5 m)	301644
Ducato • Jumper • Boxer L4H2 (L: 6.4 m - H: 2.5 m)	301645

2 B Install the Thule SmartClamp System in combination with an awning

- Base rails + smart clamps + Thule Transformation Kit

Ducato • Jumper • Boxer L2H2 (L: 5.4 m - H: 2.5 m)	301643
Ducato • Jumper • Boxer L3H2 (L: 6.0 m - H: 2.5 m)	301644
Ducato • Jumper • Boxer L4H2 (L: 6.4 m - H: 2.5 m)	301645
Thule Transformation Kit for SmartClamp System	301646

3 Choose the type of load bars (2 pcs)



Thule ProBar Flex - High	301647
Thule ProBar Flex - Low	301648

I have a roof rack > would like to expand with an awning



1 Choose your Thule Omnistor 6300 awning

- See p.18



FABRIC FINISHES	31	32
-----------------	----	----

2 Install the awning adapter for Thule SmartClamp System

- Adapters + sealing + covers



Ducato • Jumper • Boxer L2H2 (L: 5.4 m - H: 2.5 m)	301651
Ducato • Jumper • Boxer L3H2 (L: 6.0 m - H: 2.5 m)	301652
Ducato • Jumper • Boxer L4H2 (L: 6.4 m - H: 2.5 m)	301652

NOTE - For mounting possibilities, please contact your Thule recreational vehicle advisor





# Ladder for roof access

## Thule Van Ladder 9 Steps

### Telescopic ladder for easy access to roof-mounted accessories

Easily fixed to the vehicle wall with extra stability thanks to the included magnetic fixation kit.

#### FEATURES

- Easy to use anywhere you want
- Safe and stable on most terrains
- The ladder is extendable to 2.60 m
- Open partly for lower reach
- Air pressure system for safe closing
- Compact when not in use
- Complies with EN-131



301404  
Anodised

#### INCLUDED

- Thule Van Ladder 9 Steps
- Thule Ladder Fixation Kit
- 4 protective patches
- 2 organizer fixation parts
- Storage bag for ladder
- Storage bag for fixation kit



# Kit for wall fixation

## Thule Ladder Fixation Kit

### Magnetic kit suitable for steel surfaces

Use the Thule Ladder Fixation Kit for extra stability when using a telescopic ladder. Apply the magnetic kit wherever you want on the vehicle and put the ladder against it. Bind the straps around the ladder and tension them by using the pump buckles.

#### FEATURES

- Easy to apply on and remove from steel surfaces
- Multi-purpose use for telescopic ladder, organizers and windscreen
- Safe storage

301405  
Anodised

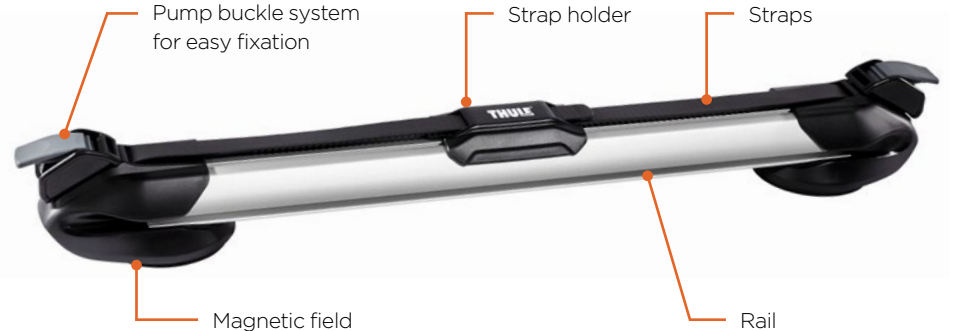
#### INCLUDED

- Thule Ladder Fixation Kit
- 4 protective patches
- 2 organizer fixation parts
- Storage bag



### Add to your Thule Ladder Fixation Kit

- Thule Windscreen - See p.27
- Thule Organizers - See p.56







## › Space

The private area around your vehicle is important, whether you prefer complete privacy or an open shelter. With a wide range of van accessories, you can enjoy outdoor life while protecting yourself from the sun, rain and wind.





Space - Line at-a-glance

Awnings



Thule Omnistor 6300



- Anodised
- White
- Anodised/Anthracite
- Anthracite



Thule 3200



- Anthracite
- Anodised/Anthracite



Thule Omnistor 5102



- Light Grey
- Anthracite



Thule Omnistor 4900



- Anthracite

Smart Panels



Thule Sun Blocker G2



Thule Rain Blocker G2



Thule Windscreen



Thule Rain Blocker G2 Pack Minivan



Tents



Thule Panorama



Thule QuickFit



Thule Residence G3 for VW T5/T6





Awnings  
Thule Omnistor 6300

The perfect roof awning for vans

The Thule Omnistor 6300 awning is available in 3 lengths perfect for vans: 3.25 m, 3.75 m and 4.00 m with a projection of 2.50 m. The awning cassette is available in anodised, white, anthracite and in the colour combination anodised-anthracite.

Operated manually or with a motor

An optional 12 VDC motor with manual override allows you to operate awning lengths from 3.00 m and more without any effort. The motor can easily be installed retrofit as an accessory on a manual Thule Omnistor 6300 awning (+ 1 kg).

Perfect fabric tension

Sturdy spring arms with patented integrated tension arms ensure a perfectly tensioned awning fabric for increased wind resistance. The patented tension arms are standard integrated for awning lengths 3.75 m and 4.00 m and are optional for a 3.25 m awning length.

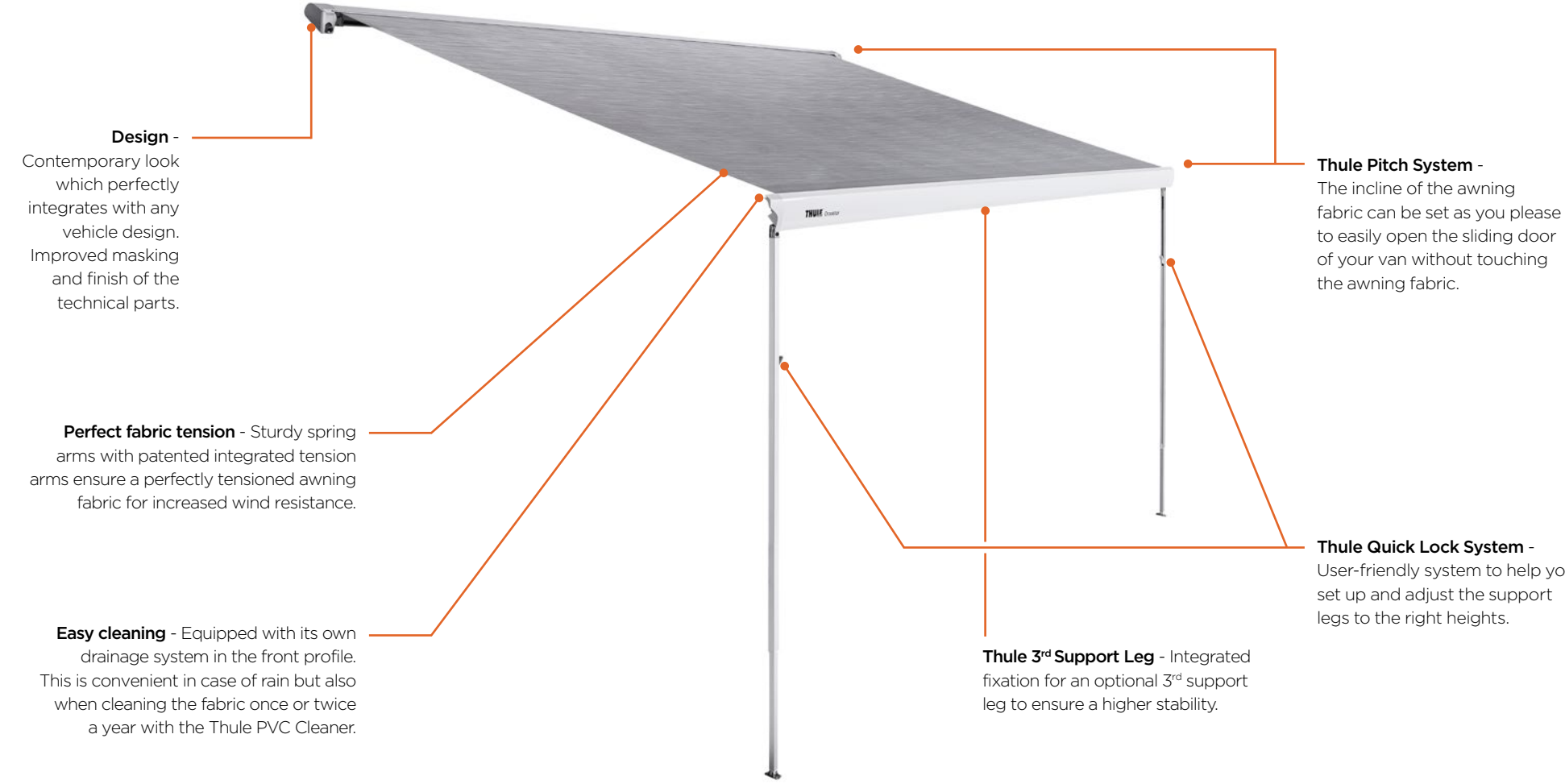
+ Add to your Thule Omnistor 6300

Smart Panels – See p.26  
Tents – See p.28 to 31

See more accessories p.25



Awnings  
Thule Omnistor 6300



CASSETTE FINISHES

- Anodised
- White
- Anthracite
- Anodised/Anthracite



Space



Awnings  
Thule 3200

Manual roll-up box awning for compact vehicles

The Thule 3200 awning is available in 5 lengths from 1.90 m to 3.00 m with a projection of 2.50 m. The awning cassette is available in completely anthracite finish or anodised with anthracite bottom and black end caps.

Mounting

Ideal for direct mount on selected range of minivans and roof rack installation on cars. The awning brackets need to be bought separately.

One-person operation

The awning can be set up by only one person. Open the cassette and take out the tension arms. Roll out the awning manually and set up the support legs. At last, connect the tension arms with the support legs and create tension.

Large projection

All awning lengths have a projection of 2.50 m, the largest projection on the market within its category.



Add to your Thule 3200

Smart Panels - See p.26

See more accessories p.25



Thule 3200 - Manual



Awnings  
Thule 3200



New

Perfect stability

Well designed end parts give the awning a high quality standard and a perfect wind resistant.

Mounting

Thanks to sturdy profiles the awning can be mounted directly on the vehicle with brackets or onto a roof rack.

Exclusive fabric tensioning system

- with pump-buckle technology.

Design

- Contemporary look which perfectly integrates with any vehicle design.

Projection

- Largest awning projection of 2.50 m on the market within its category, for all lengths.

Thule Quick Lock System

- User-friendly system to help you set up and adjust the support legs to the right heights.

Accessories

- Large range of accessories available: smart panels, strap kit, etc.

CASSETTE FINISHES

Anthracite

Anodised/Anthracite





Awnings  
Thule Omnistor 5102

Small awning conceived for Volkswagen T5/T6

The Thule Omnistor 5102 awning is developed together with and approved by Volkswagen. Comes in a standard length of 2.60 m with a projection of 2.00 m and is available in the colours light grey and anthracite.

Easy installation

Its easy installation makes it the perfect fit for city living. Mounted to the existing roof rails using the supplied adapter.

Living space

Increase your living space with 5 m² by adding a Thule Residence G3 awning tent, especially created for the Thule Omnistor 5102 awning.

Colour harmony

Two cassette colours are available in order to increase the harmony of your Volkswagen. Anthracite matches the bumper and door handles of your van.



Add to your Thule Omnistor 5102

Smart Panels - See p.26

Tents - See p.32

See more accessories p.25



Thule Omnistor 5102 - Manual



Awnings  
Thule Omnistor 5102



**Thule Quick Lock System** - User-friendly system to help you set up and adjust the support legs to the right heights.

NOTE - The supplied adapter is only suitable for VW Multivan.  
For VW California ask your Volkswagen dealer for more information

CASSETTE FINISHES

- 309852 - 2.60 x 2.00 m (LHD)  
Light Grey (fabric finish 31)
- 309851 - 2.60 x 2.00 m (LHD)  
Anthracite (fabric finish 31)
- 308885 - 2.60 x 2.00 m (RHD)  
Light Grey (fabric finish 04)
- 308988 - 2.60 x 2.00 m (RHD)  
Anthracite (fabric finish 31)





Awning packs for vans and minivans



Thule Omnistor 4900 + Ford Transit/Tourneo Custom Adapter

Complete set with Thule Omnistor 4900 awning and adapters to fit Ford Transit/Tourneo Custom vans.

- FEATURES**
- Suitable for Ford Transit and Ford Tourneo Custom vans
  - The set is available with a Thule Omnistor 4900 awning with length 2.60 m (fabric finish: 31 - Mystic grey)
  - For vehicles with a lift roof
  - Quick and easy installation by blind assembly (requires no access from the inside)
  - The awning is not removable

- 301776 - 2.60 x 2.00 m (LHD) Anthracite (fabric finish 31)
- 301777 - 2.60 x 2.00 m (RHD) Anthracite (fabric finish 31)



Thule Omnistor 4900 + PSA Minivan Adapter

Complete set with Thule Omnistor 4900 awning and adapters to fit PSA Minivans from 2016.

- FEATURES**
- Suitable for Citroën Spacetourer, Peugeot Traveller and Toyota Proace
  - The set is available with a Thule Omnistor 4900 awning with length 2.60 m (fabric finish: 31 - Mystic grey)
  - The maximum height is less than 2 meters
  - For vehicles with a lift roof
  - Quick and easy installation by blind assembly (requires no access from the inside)
  - The awning is still removable
  - The adapter must be mounted on the roof according to the prescribed instructions, the mounting requires no rail
  - Perfect finish and integration with the vehicle thanks to the black plastic adapter covers

- 301769 - 2.60 x 2.00 m (LHD) Anthracite (fabric finish 31)
- 301770 - 2.60 x 2.00 m (RHD) Anthracite (fabric finish 31)



Thule Omnistor 4900 + Volkswagen T5/T6 Adapter

Complete set with Thule Omnistor 4900 awning and adapters to fit Volkswagen T5/T6 vans.

- FEATURES**
- Suitable for Volkswagen T5/T6 models without any rail
  - The set is available with a Thule Omnistor 4900 awning with length 2.60 m or 3.00 m (fabric finish: 31 - Mystic grey)
  - For vehicles with a lift roof
  - Quick and easy installation by blind assembly (requires no access from the inside)
  - The awning is not removable
  - The adapter must be mounted on the roof according to the prescribed instructions, the mounting requires no rail

- 301772 - 2.60 x 2.00 m (LHD) Anthracite (fabric finish 31)
- 301773 - 3.00 x 2.50 m (LHD) Anthracite (fabric finish 31)
- 301774 - 2.60 x 2.00 m (RHD) Anthracite (fabric finish 31)
- 301775 - 3.00 x 2.50 m (RHD) Anthracite (fabric finish 31)



Awnings - Accessories

Lighting



Thule Tent LED Mounting Rail TO 6300

This profile can be slid at the bottom of the Thule Omnistor 6300 | 6200 roof awning cassette. Provided with a channel to slide a Thule tent or the Thule organizers in and has additional space for a Thule LED Strip. The LED light can be used both when the awning is opened or closed.

- Length: 4.00 m

- 301664 Anthracite

NOTE - Only compatible with Thule LED Strip Sideways



Thule LED Strip Sideways

Long lasting and waterproof (IP65) LED strip to offer strong natural sideways light (60 power LEDs per meter). The flexible unit can be shortened each 5 cm and is delivered with a 3M tape on the back to stick to most standard surfaces.

- Voltage: 12 VDC
- Consumption: 340-380 mA per metre
- Length: 4.00 m

- 301660 Anthracite



Thule LED Mounting Rail TO 6300 | 6200

306777 - Profile to fit the opening in the bottom of the Thule Omnistor 6300 | 6200 roof awning cassette for the installation of a Thule LED Strip. The minimum required distance between the roof and the underside of the awning must be 12 mm.

- Compatible with Thule LED Strip

- 301664 Anthracite



Thule LED Strip

Long lasting and waterproof (IP65) LED strip to offer strong warm white light (60 power LEDs per meter). The flexible unit can be shortened each 5 cm and is delivered with a 3M tape on the back to stick to most standard surfaces.

- Voltage: 12 VDC
- Consumption: 340-380 mA per metre
- Length: 4.00 m

- 301735 White

Wind protection



Thule Fabric Clamps

309698 - These clamps provide a more secure fastening between the awning fabric and the tension rafter or blocker rafter to prevent the unpleasant noise of a flapping awning fabric due to wind. The clamps have an universal fitting on most rafter profiles, just click it on the rafter, put the fabric in between and tighten with the handle.



Thule Hold Down Side Strap Kit

307916 - This kit prevents the awning and tent from being damaged due to high wind. The two straps are attached to the support legs and can easily be used with a Thule tent or the Thule Smart Panels.



Thule Tension Rafter G2

A tension rafter ensures an optimal tensioned awning fabric for a better wind resistance. The rafter is made from durable materials such as anodised aluminium profiles in combination with high impact plastics.



Thule Tension Arm Set TO 6300

302095 - Optional tension arm set to increase the wind resistance for Thule Omnistor 6300 awning length 3.25 m. Included for the longer awning lengths.



## Smart Panels

### Private space

Create additional privacy under your awning by easily attaching one or more Smart Panels to your awning. Moreover these panels protect you against sun, rain and wind and can be combined in many ways for an optimal protection.



### Thule Rain Blocker G2 Pack Minivan

Set of 2 side panels and 2 front panels for Thule Omnistor 5102 | 4900 awning lengths 2.60 m mounted on minivans.

New



#### SET INCLUDES



#### FITS MINIVANS

- Volkswagen T5/T6 (California, etc.)
- Ford Custom
- Ford Custom Nugget
- Peugeot Traveller, Citroën Spacetourer (Campster), Toyota Proace
- Renault Trafic
- Mercedes Benz V-Klasse Marco Polo
- PSA Minivan > 2016

## Smart Panels



### Thule Sun Blocker G2

Protection against the sun.

#### FEATURES

- Made of micro-aired screen fabric
- The front panel slides into the awning lead rail
- The side panel slides into an aluminium rafter, installed between the awning's cassette and lead rail. The panel can be installed on both sides of the awning with the same rafter



### Storage

#### Thule Luxury Blocker Bag

301568 - Luxurious black bag to store your tension rafter, panel and fixation material - LxWxH: 130 x 20 x 20 cm.



Thule Sun/Rain Blocker G2 user instruction



### Thule Rain Blocker G2

Protection against rain and wind.

#### FEATURES

- Made of high quality PVC fabric
- The front panel slides into the awning lead rail
- The side panel slides into an aluminium rafter, installed between the awning's cassette and lead rail. The panel can be installed on both sides of the awning with the same rafter



### Thule Windscreen

Easy to install side panel which lets the light and breeze in while keeping the elements out ensuring privacy.

#### FEATURES

- Made of micro-aired screen fabric
- Easy to install without drilling with the magnetic ladder fixation kit - See p.13
- Quick to set up thanks to its automatic roll in and out system

### Storage

The Thule Windscreen is delivered with a bag for easy storage.



Thule Windscreen user instruction

Space





Tents  
Thule Panorama

Awning tent with a high living comfort and stunning view

Special Thule Panorama model for a Ducato H2 van in combination with the Thule Omnistor 6300 | 6200 roof awning.

Installation

The tent is delivered with clamping profiles to mount the side panels and connect them with the awning fabric for a perfect roof sealing. The side panels slide into the clamping profiles and the front panel slides into the awning lead rail. Both panels are combined with a zipper for optimal closing.

Fabric material

AIRTEX® is perfect for solar protection applications. This 200 g/m² light fabric is a 100% polyester fabric, which is coated with acrylate on one side and impregnated. The special coating gives AIRTEX® a distinctively textile character.

Modularity

Completely adaptable to all your needs. You can fully remove the large front and side windows or open them vertically to use as a door, or horizontally to let the fresh air in.



+ Add to your Thule Panorama



Thule Mosquito

Zippable panel to replace the standard front or side of the Thule Panorama tent. Made of mosquito mesh to create additional ventilation.

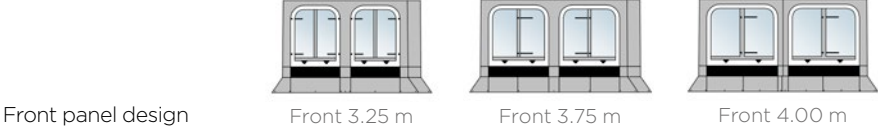


Thule Curtains

301563 - Easily create more privacy by adding grey curtains.

See more accessories p.34

Tents  
Thule Panorama



- Clamping profile** - To mount and connect the side panel to the awning fabric.
- Ventilation opening on both sides**
- Mosquito mesh**
- Fabric** - Made out of Airtex.



- Installation** - The side panels easily slide into the clamping profiles and the front panel slides into the awning lead rail. Optimal closing due to zipper connecting the front and side panels.
- Stability** - A diagonal support between the foam and the clamping profile provides extra sturdiness.



User instruction



Modularity

INCLUDED

- Windslip and wheelcover: prevent the wind from entering through the gap below your vehicle
- 2 luxury storage bags





Tents  
Thule QuickFit

Awning tent with an ultra-fast set up

Special Thule QuickFit model for a Ducato H2 van in combination with the Thule Omnistor 6300 | 6200 roof awning.

Installation

The tent is in one piece and doesn't need additional fixation profiles. It easily slides into an optional rail below the awning cassette and is fixed to the awning lead rail. The front canopy is installed with flexible arch tubes to provide additional shade.

Fabric material

Made out of Ripstop fabric: a lightweight woven and tear-resistant material used for aeronautical engineering. This material also has a strong water resistant coefficient. Because the tent is connected with an awning, the double roof offers a good insulation to keep the tent and vehicle cool.

Modularity

The front has two windows and all sides are fully zippable. They can be taken away to create an open porch, can be opened sideways to create a door on all sides, left or right and can be opened from top to bottom to create an open window.



+ Add to your Thule QuickFit



**Thule Mosquito**  
Zippable panel to replace the standard front or side of the Thule QuickFit tent. Made of mosquito mesh to create additional ventilation.



**Thule Side Tensioning Kit**  
307053 - Set of 2 fiberglass poles to ensure a better sealing of the Thule QuickFit tent with the vehicle wall.

See more accessories p.34

Tents  
Thule QuickFit

Fast and easy set up



**Double ceiling** -  
Created by suspending the tent below the awning fabric to ensure a better ventilation and insulation.

**Mosquito mesh**

**Curtains with zippers**

**Fabric** - Made out of Ripstop.

**Fixation** - The tent is connected to the black fixation parts, which are slid into the awning lead rail.

**Ventilation** - Two permanent ventilation openings allow a perfect air circulation when the tent is closed. The side windows are provided with mosquito mesh.

INSTALLATION

Fits into an additional rail below the awning cassette.  
307050 - Thule Awning Fixation Kit TO 6300 | 6200



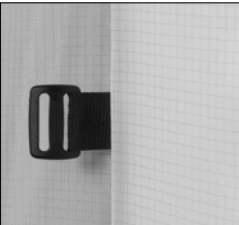
User instruction



Modularity

INCLUDED

- Windslip and wheelcover: prevent the wind from entering through the gap below your vehicle
- Curtains with zippers
- Storage bag





Tents

Thule Residence G3 for Volkswagen T5/T6

A real living room in the outdoors

Special Thule Residence G3 model for Volkswagen T5/T6 Multivan in combination with the Thule Omnistor 5102 awning or the original VW awning.

Installation

The tent is delivered with clamping profiles to mount the side panels and connect them with the awning fabric for a perfect roof sealing. The side panels slide into the clamping profiles and the front panel slides into the awning lead rail. Both panels are combined with black double-shaped profiles for optimal closing.

Fabric material

High quality welded PVC fabric for optimal wind and water tightness in the colours black, grey and white.

Modularity

The front panel has a door opening on the right side and can be rolled upwards separately for easy entrance. It is possible to add accessories in the optional rail at the front panel.



+ Perfect sealing

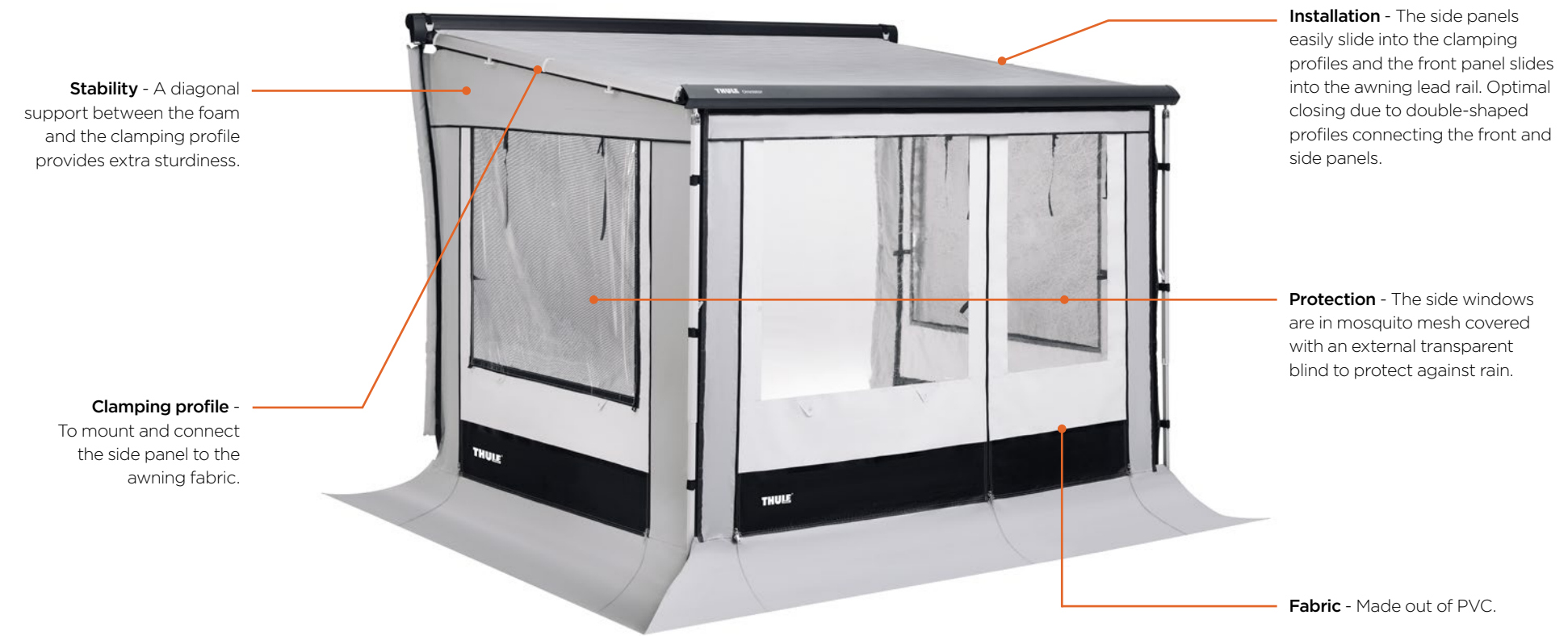


A foam with strap guarantees full sealing with the vehicle wall to avoid the wind from entering.

See more accessories p.34

Tents

Thule Residence G3 for Volkswagen T5/T6



INCLUDED

- Windslip and wheelcover: prevent the wind from entering through the gap below your vehicle
- Storage bag





Tents - Accessories



Thule Mosquito

Thanks to the modularity of the Thule Panorama | QuickFit tent, all panels can be unzipped and replaced by a panel made of mosquito mesh to create ventilation and to keep dirt and vermin out.

Thule Panorama

- 309930 - Mosquito Side
- 309931 - Mosquito Front 4.00 m

Thule QuickFit

- 309925 - Mosquito Side
- 309927 - Mosquito Front 3.00 m



Thule Hold Down Side Strap Kit

307916 - This kit prevents the awning and tent from being damaged due to high wind. The straps are attached to both awning support legs.



Thule Tent LED Mounting Rail TO 6300 | 6200

301664 - This 4.00 m profile can be slid at the bottom of TO 6300 | 6200 roof awning cassettes. Provided with a channel to slide the Thule QuickFit tent in.



Thule Side Tensioning Kit

307053 - Set of 2 fiberglass poles to ensure a better sealing of the Thule QuickFit tent with the vehicle wall.



Thule Awning Fixation Kit TO 6300 | 6200

307050 - 3 profiles to slide into the opening below the awning cassette TO 6300 | 6200. It's glued to prevent sliding. Cannot be combined with a Thule LED Mounting Rail (306777).



Thule Curtains

301563 - Easily create more privacy by adding grey curtains. Suitable for Thule Panorama tent.







## › Sports Gear

Enjoying an active life with friends and family requires bringing a lot of gear. Getting the most out of your active life means that you might need extra space or special carriers to bring everything you need.



Sports Gear - Line at-a-glance

Rear Door-mounted Bike Rack



Thule WanderWay



2 bikes, extendable to 4



Thule Elite Van XT



307340 - 2 bikes  
Anodised

302018 - 2 bikes  
Black

302013 - 2 bikes  
Black

302043 - 2 bikes  
Black



Towbar-mounted Bike Racks



Thule VeloSpace XT



938000 (13-pin) - 2 bikes



939000 (13-pin) - 3 bikes



Thule EasyFold XT



933100 (13-pin) - 2 bikes



934100 (13-pin) - 3 bikes



Water Sport Racks



Thule Hullavator Pro

898000  
Aluminium



Thule Hull-a-Port Aero

849000  
Black



Thule DockGrip

895000  
Black



Thule Portage

819000  
Black



Thule SUP Taxi XT

810001  
Aluminium/Black



Thule Multipurpose Rack

855000  
Black

Sports Gear - Line at-a-glance

Winter Sport Racks



Thule SnowPack



732200  
Aluminium



732400  
Aluminium



732600  
Aluminium



Thule SkiClick

(Cross-country skis)

729100  
Black





# Rear Door-mounted Bike Rack Thule WanderWay

## Top of the line trunk bike rack for the VW T6 minivan

Thule WanderWay is quick and simple to mount, thanks to the dedicated fit to the VW T6 minivan (does not fit VW T5).

### Load capacity

It carries two bikes and it is possible to increase the load capacity to carry up to 4 bikes by adding a 3<sup>rd</sup> bike and a 4<sup>th</sup> bike adapter. Alternatively, the robust construction lets you carry two e-bikes with a combined weight of up to 60 kg.

### Easy to use, easy to keep on your car

Everything on the Thule WanderWay is designed for ease of use. Load your bikes easily with easy-to-adjust rails that slide from left to right, and fasten the wheels securely with wheel holders with pump buckles. Once mounted, Thule WanderWay can stay on your car for as long as you like – it is possible to open the vehicle trunk without any mounted bikes.

## + Add to your Thule WanderWay



**Thule WanderWay 3<sup>rd</sup> Rail Kit**  
911600 - To position a 3<sup>rd</sup> bike on the bike rack. Adjustable from left to right.



**Thule WanderWay 4<sup>th</sup> Rail Kit**  
911700 - To position a 4<sup>th</sup> bike on the bike rack.

See more accessories on [www.thule.com](http://www.thule.com)



# Rear Door-mounted Bike Rack Thule WanderWay



New

**Mounting** - Quick and simple to mount thanks to the dedicated fit to the VW T6 minivan. Possible to increase load capacity up to 4 bikes.

**Bike holders** - Easy mounting of bikes through detachable bike arms with lockable Thule AcuTight torque limiter knobs that click when optimal torque is reached.

**Foldable platform** - Platform folds up vertically when not in use and folds flat for easy transport and convenient storage.



**Sliding rails** - The rails are adjustable from left to right to easily find the best position for your bikes.

**Wheel holders** - Finding the perfect setting for your bike is easy thanks to the adjustable wheel holders. They enable you to transport all kinds of bikes with various sizes.

### Thule WanderWay



911001 - 2 bikes, extendable to 4

Anodised/black





# Rear Door-mounted Bike Racks Thule Elite Van XT

## Lightweight bike rack with premium performance

The Thule Elite Van XT bike rack is very easy to install, it's clamped and glued on the rear door of the van and requires no drilling.

### Two finishes

The bike rack is available in two finishes: anodised and black. The finish completely in black is perfect for vans with a sporty and off-road look.

### Secure fastening

Adjustable wheel holders with straps with pump buckle tensioning system easily secure the bike wheels to avoid movement during transport. A distance of 20 cm between the rails enables a more easy load of the bikes. Doors can be opened with bikes on.

### Perfect finish

Rubber sealing strips create a perfect finish even when the bike rack is taken off.



## Add to your Thule Elite Van XT



### Thule Strap Lock

307389 - Strap with a durable steel wire to bind around your bikes and bike rack to secure them during transport - length 3.00 m.



### Thule Bike Frame Adapter

982003 - Frame adapter for easiest possible fitting of bikes with non-standard frames (e.g. ladies' bikes, downhill bikes).

See more accessories on [www.thule.com](http://www.thule.com)



# Rear Door-mounted Bike Racks Thule Elite Van XT



## Installation -

The bike rack is clamped and glued on the rear door and requires no drilling.

## Pump buckles -

The straps with a pump buckle tensioning system easily secure the bike wheels.



## Rubber sealing strips -

Create a perfect finish when the bike rack is taken off.

## Bike holders -

Easy mounting of bikes through detachable bike arms with lockable Thule AcuTight torque limiter knobs that click when optimal torque is reached.

## Smart connections -

From bike rack to mounting rails. Easy to unhook and take off the bike rack when not in use.



## Thule Elite Van XT

2 bikes

Suitable for Ducato, Jumper and Boxer from 2007 onwards

- 307340 Anodised
- 302013 Black

## Thule Elite Van XT

2 bikes

Suitable for VW Crafter from 2017 onwards

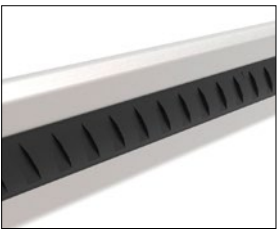
- 302018 Black

## Thule Elite Van XT

2 bikes

Suitable for Sprinter as from 2006 and VW Crafter 05/ 2006-2017

- 302043 Black





# Towbar-mounted Bike Racks

## Thule VeloSpace XT



### The versatile bike rack for all types of bikes

This towbar-mounted bike rack requires minimal lifting to load and unload, making it the preferred choice for heavier bikes.



🚲🚲  
938000 (13-pin) - 2 bikes



🚲🚲🚲  
939000 (13-pin) - 3 bikes

### + Add to your Thule VeloSpace XT



**Thule BackSpace XT**  
938300 - Lightweight, durable cargo box that fits onto the rear of the vehicle keeping all of your gear easily accessible. See p.59



**Thule Transport Wheel**  
917300 - Convenient transportation wheel for the easiest transportation of your bike rack to and from the vehicle.



# Towbar-mounted Bike Racks

## Thule EasyFold XT



### The foldable bike rack for all types of bikes

This user-friendly foldable bike rack is ideal for all types of bikes, including e-bikes and heavy mountainbikes. When not in use the rack doesn't take more space than a normal suitcase.



🚲🚲  
933100 (13-pin) - 2 bikes



🚲🚲🚲  
934100 (13-pin) - 3 bikes

### + Add to your Thule EasyFold XT



**Thule EasyFold XT Loading Ramp**  
933400 - Convenient foldable ramp for easy loading and unloading of your bikes.



**Thule EasyFold XT Carrying Bag**  
931100 (2-bikes) - 934400 (3-bikes)  
Protects you and your car from dirt when transporting and storing the Thule EasyFold XT bike rack.





# Water Sport Racks Thule Hullavator Pro

## Get out on the water quickly and easily

Get out on the water quickly and easily - even on your own. This lift-assist kayak rack handles up to 18 kg of the weight for you.

### Mounting

This lift-assist kayak rack can be easily mounted on the Thule ProBar Flex load bars.

### Easy load and unload

Load/unload and strap your kayak at a convenient height with the help of double extending arms that lower the kayak by up to 1 meter.

### Protection

Maximum protection for your kayak thanks to 8 touch points of padded support. Longer product life from the aluminium, double-coated steel construction that resists corrosion.



## + Load and unload your kayak easily

### Thule Gas-assist Struts

Load and unload your kayak on your own thanks to the gas-assist struts that lift and lower 18 kg of the kayak's weight.



# Water Sport Racks Thule Hullavator Pro



**Easy load** - Load/unload and strap your kayak at a convenient height with the help of double extending arms that lower the kayak by up to 1 meter.



**Protection** - Maximum protection for your kayak thanks to 8 touch points of padded support.

**On your own** - Load and unload your kayak on your own thanks to the gas-assist struts that lift and lower 18 kg of the kayak's weight.

**Durable material** - Longer product life from the aluminum, double-coated steel construction that resists corrosion.

898000  
Aluminium

NOTE - The Thule Hullavator Pro is only compatible with Thule ProBar Flex - High (301647).







Water Sport Racks



Thule Hull-a-Port Aero

Innovative kayak carrier that is safe, stylish, easy to use and integrates seamlessly with Thule roof rack systems.

FEATURES

- Quickly raise or fold when not in use using the convenient front release handle
- Kayaks are protected during transit due to the durable and soft rubber padding
- Easily manage load straps while strapping down the kayak using the integrated StrapCatch
- Theft resistant design keeps carrier securely attached to the load bars (locks included)

849000  
Black



Thule DockGrip

A versatile, horizontal kayak rack with large cushioned, flexible pads that conform to a large range of hull shapes as well as SUP's.

FEATURES

- Can carry a variety of hull shapes as well as SUPs with two independent pivoting saddles with angle-setting lever
- Protects the hull with large, flexible, cushioned pads
- Easily secure the kayak or SUP using the center load straps with vehicle-protective buckle bumpers
- Including T-track attachment

895000  
Black



Water Sport Racks



Thule Portage

Spend maximum time out on the water with our easiest-loading canoe carrier.

FEATURES

- Durable gunwales with ramped sides provide easy loading
- Cushioned weather-resistant base padding protects canoe during transit
- Strong, durable load straps with buckle bumper protect vehicle and canoe from scratches
- Carries 1 canoe

819000  
Black



Thule SUP Taxi XT

The top of the range SUP rack delivers maximum board security, an adjustable custom fit and an easy to use mounting.

FEATURES

- Exclusive, telescoping design delivers a custom fit for board widths from 70-86 cm
- Heavy-duty, steel reinforced webbing and spring loaded locking cam provide unsurpassed security for your boards
- Integrated fixation strap for easy and convenient loading
- Soft, weather resistant padding protects boards during transit

810001  
Aluminium/Black



Thule Multipurpose Rack

Smart multipurpose rack for masts, paddles and oars.

FEATURES

- Flexible system for carrying paddles, oars, masts and other long items
- Integrated cable locks to secure accessories
- Equipment protection provided by integrated rubber cushion
- Available in a set of two

855000  
Black







## Winter Sport Racks



732200  
Aluminium



732400  
Aluminium



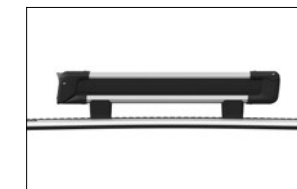
732600  
Aluminium

## Thule SnowPack

Sleek, aerodynamic ski rack for all types of skis and snowboards.

### FEATURES

- Holds skis and snowboards securely with ultra-soft rubber arms that grip without scratching the surfaces
- Safely carries thicker modern skis and snowboards, and reduces the carrier height when unloaded due to the integrated vertical spring system
- Easy to open and close while wearing gloves, thanks to an oversized push button
- Added roof clearance for skis with tall bindings, thanks to included extension feet that raise the carrier



## Thule SkiClick

Smart and space-saving cross-country ski transporter.

### FEATURES

- Innovative 3-in-1 solution, a ski rack with ski strap and wall storage functionality
- Smart, space-saving design
- Minimum wind drag for less fuel consumption
- Safety lock
- Attaches to walls and roof racks with a simple click

(Cross-country skis)

729100  
Black







## › Storage

Space is always too tight, therefore a flexible storage is crucial. It allows you to have a place for each item and easy access to it. With our smart storage solutions you can store your things inside or outside your van to fully enjoy your free time.





# Storage - Line at-a-glance

## Organizers



**Thule Wall Organizer**  
14 pockets in 2 different sizes



**Thule Shoe Organizer**  
10 large and 2 mesh pockets



**Thule Countertop Organizer**  
Different compartments and elastic loops



**Thule Go Box**  
2 main compartments and 3 side pockets



**Thule Toiletry Kit**  
13 separate compartments



**Fixation systems**  
Different systems to hang up your organizers

## Boxes



**Thule Force XT**  
Roof-mounted Box

## Basket



**Thule Canyon XT**  
Roof-mounted Basket

## Cargo



**Thule BackSpace XT**  
Rear-mounted Cargo



Organizers



Thule Wall Organizer

Provides storage space for all kinds of things.

- FEATURES**
- 14 pockets in 2 different sizes
  - Integrated cover with zipper to protect your items during transport
  - Dimensions LxH: 50 x 85 cm
- FIXATION** (not included)
- Thule Strap Kit for Organizers
  - Thule POD 2.0
  - Thule POD 1.0

306924  
Black/Grey



Thule Shoe Organizer

Provides storage space for at least 10 pairs of shoes.

- FEATURES**
- 10 large and 2 mesh pockets
  - Integrated cover with zipper to protect your shoes during transport
  - Dimensions LxH: 50 x 80 cm
- FIXATION** (not included)
- Thule Strap Kit for Organizers
  - Thule POD 2.0
  - Thule POD 1.0

306925  
Black/Grey



Thule Countertop Organizer

Keeps all essential items within reach.

- FEATURES**
- Different compartments and elastic loops
  - Integrated paper towel holder
  - Dimensions LxH: 90 x 40 cm
- FIXATION** (not included)
- Thule Strap Kit for Organizers
  - Thule POD 2.0
  - Thule POD 1.0

306926  
Black/Grey



Thule Toiletry Kit

Ideal to use in the bathroom.

- FEATURES**
- 13 separate compartments
  - Easy to carry thanks to the handle on top
  - Removable mirror
  - Dimensions closed LxH: 35 x 40 cm
  - Dimensions opened LxH: 35 x 120 cm
  - L-shaped hook to fit over doors

- FIXATION** (not included)
- Thule POD 2.0
  - Thule POD 1.0

306928  
Black/Grey



Thule Go Box

Handy and foldable storage box in two sizes.

- FEATURES**
- 2 main compartments, 3 side pockets
  - Simple to carry and it folds up quickly to store when not in use
  - Foldable cap for rain protection
  - Dimensions Medium LxWxH: 61 x 36 x 30 cm
  - Dimensions Large LxWxH: 61 x 46 x 30 cm

M - 306929  
Black/Grey

L - 306930  
Black/Grey



Fixation systems



Thule Ladder Fixation Kit

- FEATURES**
- Max. load: 10 kg
  - Dimensions LxWxH: 66 x 10 x 8 cm
  - Weight: 1.2 kg

301415  
Black

See p.13



Thule Strap Kit for Organizers

- FEATURES**
- Fits in an optional rail or in the front lead rail of the awning
  - Maximum load: 10 kg/strap
  - Quick release system
  - Adjustable in height
  - Strap length: 1.20 m
  - Set of 2 pieces

307124  
Black



Thule POD 2.0

- FEATURES**
- Mounted with two screws and/or glue
  - Cover included
  - Compact and discrete design
  - Maximum load: 10 kg/POD
  - Dimensions LxWxH: 5.5 x 1.2 x 3 cm
  - Set of 2 pieces

306804  
White





Roof-mounted box  
Thule Force XT

Versatile roof-mounted cargo box  
for everyday use



**Fitting** - Maximum space efficiency across a wide range of vehicle fits.

**Mounting** - Easy to mount thanks to the PowerClick quick-mount system. The integrated torque indicator clicks when it's properly mounted, ensuring fast and secure fitting.

**Load** - 75 kg load capacity.

**Secured** - Comfortable to open and close thanks to the LockKnob that also helps to prevent damage to the Thule Comfort Key.

**Easy opening** - DualSide opening provides easy access to all areas of the box, from either side of the vehicle.

NOTE - When mounted on load bars Thule ProBar Flex use Thule T-Track Adapter 697600



- |                          |                          |                          |
|--------------------------|--------------------------|--------------------------|
| <b>S</b>                 | <b>M</b>                 | <b>L</b>                 |
| 635100<br>Black Aeroskin | 635200<br>Black Aeroskin | 635700<br>Black Aeroskin |

Discover more Thule roof box models on [www.thule.com](http://www.thule.com)

Roof-mounted Basket



**Thule Canyon XT**

Ideal for transporting gear of all shapes and sizes, this is a roof basket with a robust yet stylish, lightweight steel tube design.

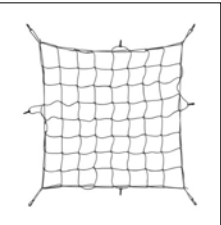
**FEATURES**

- Wind fairing is included to help airflow over your cargo
- Stylish and functional low-profile design, with tapered side walls for easier loading and unloading
- Lockable with the Thule One-Key System
- Make the cargo area 51 cm longer by adding the Thule Canyon Extension XT

859002  
Black

Accessories

- 595000 - Thule Load Net 80 x 80 cm
- 595100 - Thule Load Net 130 x 90 cm
- 859101 - Thule Canyon Extension XT



Rear-mounted Cargo



**Thule BackSpace XT**

Lightweight, durable cargo box that fits onto the Thule VeloSpace XT bike rack, keeping all of your gear easily accessible.

**FEATURES**

- Box sits low to the ground, making it easy to load and unload cargo
- Integrated handles for easy carrying of the box
- Easy to store when not in use, thanks to the lightweight and foldable structure

938300  
Black

Mounting

On a Thule VeloSpace XT bike rack - See p.44







## › **Comfort & Security**

Make your holiday pleasant and comfortable. Access to your vehicle is effortless with a Thule Step. For safe stability for your vehicle, use the Thule Levelers. Enjoy your activities far from your vehicle with the knowledge your belongings are protected with robust, high quality locks.





## Comfort & Security - Line at-a-glance

### Steps



**Thule Slide-Out Step V19 12V  
Ducato | Jumper | Boxer  
Euro 6d-Temp**



Easy access to your vehicle



**Thule Slide-Out Step V19 12V  
Crafter 2017**



Easy access to your vehicle

### Levelers



**Thule Levelers**



The stable way to park

### Locks



**Thule Universal Lock**



Large overlap with door for high security



**Thule Cab Lock**



Secure your cabin door



**Thule Van Lock**



Secure rear and sliding side doors

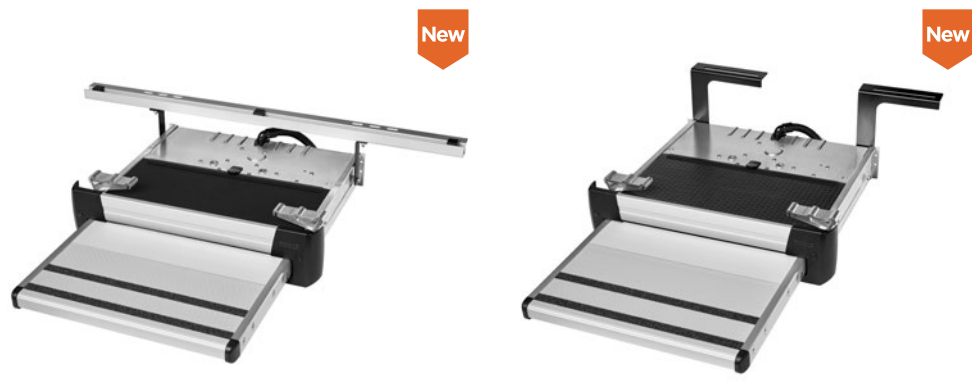


**Steps**  
**Thule Slide-Out Step V19 12V**



**Easy access to your vehicle**

A step allows you to easily enter your vehicle without effort. Extremely robust, the step is made of corrugated anodised aluminium. The quality exceeds European quality standard EN1646. A switch for the connection of a warning lamp inside the vehicle is included as standard, making it impossible to drive away with the step still out.



**Thule Slide-Out Step V19 12V**  
**Ducato | Jumper | Boxer Euro 6d-Temp**

- FEATURES**
- Width: 400 - 550 - 700 mm

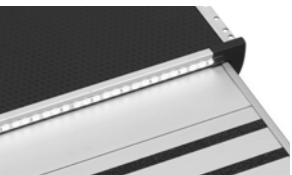
**Thule Slide-Out Step V19 12V**  
**Crafter 2017**

- FEATURES**
- Width: 400 - 550 - 700 mm

NOTE - Mounting set needs to be bought separately

**+ Add to your Thule Slide-Out Step V19 12V**

**Thule LED Kit for Slide-Out Step V19 12V**  
301826 - Integrated and protected LED for optimal visibility of the footboard.



**Levelers**  
**Thule Levelers**



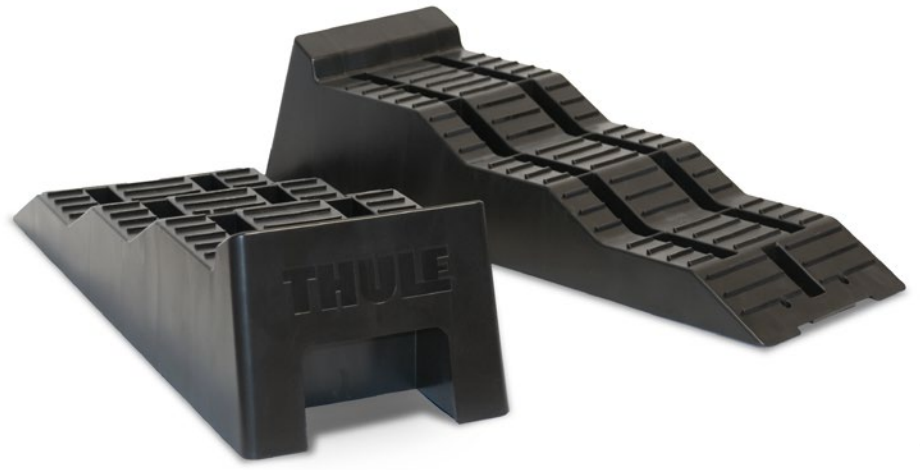
**The stable way to park**

**Top stability**

Thule levelers offer a very large surface area for increased stability, making them ideal for wider tyres, with a maximum load capacity of 5 ton/set.

**Striped area**

The three heights make it easier to get your vehicle leveled. The striped area offers perfect grip between the tyre and the leveler.



- FEATURES**
- 3 heights: 44 - 78 - 112 mm
  - Dimensions LxWxH: 560 x 200 x 150 mm
  - Weight: 1.8 kg per leveler

**307617**  
Black

- INCLUDED**
- Set of 2 levelers
  - Storage bag





Locks



Thule Universal Lock

This high security lock fits all: motorhome, caravan and van. The surface-mounted installation is perfect for sliding doors, cabin doors or double rear doors of a van.

FEATURES

- Large overlap with door for high security
- Strong rotating lock system
- For sliding doors a 38 mm clearance is required to fit the lock.  
As an alternative a door stopper can be mounted in the rail or the lock can be mounted in a higher position
- Available in the colours white and black

PACK

- |                            |                            |
|----------------------------|----------------------------|
| 301406 - 1 piece<br>White  | 301408 - 1 piece<br>Black  |
| 301419 - 2 pieces<br>White | 301409 - 2 pieces<br>Black |
| 301407 - 3 pieces<br>White |                            |

Sliding door



Cabin doors



Rear doors



Locks



Thule Cab Lock

This lock secures your cabin door from the inside with a key. It offers a soft touch cover and matches the colour of your interior. Designed to fit the Fiat Ducato, Citroën Jumper and Peugeot Boxer. Special variant available for MB Sprinter and Renault Master.

PACK

- |                                     |
|-------------------------------------|
| 309830 - 2 pieces: Ducato<br>Grey   |
| 309831 - 2 pieces: Sprinter<br>Grey |



Thule Van Lock

This high security lock helps you to secure rear and sliding side doors. Smart and attractive, it fits all van models and matches the colour of your van's bumper and handles.

PACK

- |                            |
|----------------------------|
| 309832 - 1 piece<br>Black  |
| 309833 - 2 pieces<br>Black |







Visit [www.thule.com](http://www.thule.com) and discover Thule's wide range of products for an active lifestyle, from bike racks and roof boxes to strollers, luggage and backpacks.





Roof Rack System - Technical Specifications



Name	Thule SmartClamp System		
SKU No	301640	301641	301642
INSTALLATION			
Van	• Fiat Ducato • Peugeot Boxer • Citroën Jumper ≥ 06/2006		
SPECIFICATIONS			
Vehicle size	L2H2 (length: 5.4 m)	L3H2 (length: 6 m)	L4H2 (length: 6.4 m)
Max. load roof rack	150 kg	200 kg	200 kg
Fits awning length	3.25 m	3.75 m	4.00 m
Product weight	9 kg	11 kg	12 kg
CONTENT			
Base rails	2 x 2.83 m	2 x 3.44 m	2 x 3.78 m
Smart clamps	6	8	8



Thule SmartClamp System for Awning Pack*			
Name			
SKU No	301643	301644	301645
INSTALLATION			
Van	• Fiat Ducato • Peugeot Boxer • Citroën Jumper ≥ 06/2006		
SPECIFICATIONS			
Vehicle size	L2H2 (length: 5.4 m)	L3H2 (length: 6 m)	L4H2 (length: 6.4 m)
Max. load roof rack	150 kg	200 kg	200 kg
Fits awning length	3.25 m	3.75 m	4.00 m
Product weight	9 kg	11 kg	12 kg
CONTENT			
Base rails	2 x 2.83 m	2 x 3.44 m	2 x 3.78 m
Smart clamps	3	4	4
Awning connectors	3	4	4

\* Mounting set when roof rack is bought in combination with the Thule Omnistor 6300 awning



Thule ProBar Flex		
	High (2 pcs)	Low (2 pcs)
SKU No	301647	301648
INSTALLATION		
Van	•	•
SPECIFICATIONS		
Height (load bar to roof)	13 cm	10 cm
Length	1.50 m	1.50 m
Max. loading weight (per set)	75 kg	75 kg
Product weight (per set)	8.3 kg	7.9 kg



Thule Van Ladder 9 Steps	
SKU No	301404
INSTALLATION	
Van	•
Minivan	•
SPECIFICATIONS	
Steps	9
Max. weight support	150 kg
Dimensions closed (L x W x H)	49 x 7 x 75 cm
Dimensions open (L x W x H)	49 x 7 x 264 cm
Product weight	8.1 kg
Storage bag	•

NOTE: includes Thule Ladder Fixation Kit



Thule Ladder Fixation Kit	
SKU No	301405
INSTALLATION	
Van	•
Minivan	•
SPECIFICATIONS	
Max. load organizers	10 kg
Dimensions (L x W x H)	66 x 10 x 8 cm
Product weight	1.2 kg
Storage bag	•

Awnings - Technical Specifications



New

Name	Thule Omnistor 6300 Manual			Thule Omnistor 6300 Motorised			Thule Omnistor 6300 Pack* Manual			Thule Omnistor 5102	Thule 3200				
INSTALLATION															
Van	•	•	•	•	•	•	• Fiat Ducato • Peugeot Boxer • Citroën Jumper > 2007								
Minivan										• VW T5/T6	•	•	•	•	•
OPERATION															
Fast gear	•	•	•				•	•	•	•					
By hand											•	•	•	•	•
Motor	Optional	Optional	Optional	12 VDC	12 VDC	12 VDC	Optional	Optional	Optional						
Integrated tension arms	Optional (+ 302095)	•	•	Optional (+ 302095)	•	•	Optional (+ 302095)	•	•						
Quick-Lock System	•	•	•	•	•	•	•	•	•	•	•	•	•	•	•
SPECIFICATIONS															
Length	3.25 m	3.75 m	4.00 m	3.28 m	3.78 m	4.03 m	3.25 m	3.75 m	4.00 m	2.60 m	1.90 m	2.30 m	2.50 m	2.70 m	3.00 m
Vehicle size	L2H2	L3H3	L4H2	L2H2	L3H3	L4H2	L2H2	L3H3	L4H2						
Projection	2.50 m	2.50 m	2.50 m	2.50 m	2.50 m	2.50 m	2.50 m	2.50 m	2.50 m	2.00 m	2.50 m	2.50 m	2.50 m	2.50 m	2.50 m
Product weight	25.10 kg	28.50 kg	30.50 kg	26.10 kg	29.50 kg	31.50 kg	25.10 kg	28.50 kg	30.50 kg	19.80 kg	12.00 kg	13.80 kg	14.70 kg	15.60 kg	16.90 kg
Cassette finishes	White Anodised Anthracite			White Anodised Anthracite			White Anodised Anodised/Black Anthracite			Light grey Anthracite	Anthracite Anodised/Black				
Fabric finishes	31 - Mystic Grey 32 - Sapphire Blue			31 - Mystic Grey			31 - Mystic Grey			31 - Mystic Grey	Uni color grey				

\* Includes: adapter set, EPDM sealing and adapter-covers

NOTE - Available from April 2020

FABRIC FINISHES



31

32



Smart Panels - Technical Specifications



Thule Sun Blocker G2 Side

Awning type	Projection	A - Mounting height	H - Awning incline	SKU No
TO 5200 • 5102 • 4900 • 6300 T 3200	2.00 m	1.90 – 2.24 m	Small 21 cm	307399
		1.90 – 2.24 m	Small 21 cm	301338
TO 5200 • 4900 • 6300	2.50 m	2.25 – 2.44 m	Medium 23 cm	307278
		2.45 – 2.64 m	Large 43 cm	307279



Thule Rain Blocker G2 Side

Awning type	Projection	A - Mounting height	H - Awning incline	SKU No
TO 5200 • 5102 • 4900 TO 5200 • 4900 • 6300 T 3200	2.00 m	1.80 – 1.99 m	Minivan*	306515
		2.05 – 2.24 m	Small 23 cm	307400
		1.80 – 1.99 m	Minivan	301339
		2.05 – 2.24 m	Small 23 cm	307291
TO 5200 • 4900 • 6300	2.50 m	2.25 – 2.44 m	Medium 23 cm	307292
		2.45 – 2.64 m	Large 43 cm	307293
TO 6300		2.30 – 2.50 m	Van**	307302



\*Minivan  
• VW California T5/T6 > 2003  
• PSA Minivan > 2016



\*\*Van  
• Fiat Ducato > 2006  
• Peugeot Boxer > 2006  
• Citroën Jumper > 2006  
• VW Crafter > 2017



Thule Rain Blocker G2 Pack Minivan

Awning type	Packaging	SKU No
TO 4900 • 5102	2x Thule Rain Blocker G2 Side Minivan 2x Thule Rain Blocker G2 Front A (1.27 m) Storage bag	301329



Thule Windscreen

Fabric's height	Total height	Length	Weight	SKU No
1.38 m	1.55 m	3.00 m	4.5 kg	306456



Thule Sun Blocker G2 Front

Length	Fits min. awning length	Height	SKU No
1.00 m	-		307284
2.40 m	2.60 m		307285
2.80 m	3.00 m		307286
3.30 m	3.50 m	1.70 m	307287
3.80 m	4.00 m		307288



Thule Rain Blocker G2 Front

Awning type	Panel type	Length	Height	SKU No
Combine with Side Panel: Minivan				
T 3200	J	1.12 m		301354
T 3200 • TO 5200 • 4900 • 5102	A	1.27 m	1.85 m	306454
T 3200	K	1.47 m		301355
T 3200	L	1.81 m		301356
Combine with Side Panel: Small				
All Thule Omnistor awnings	B	1.27 m	2.10 m	301320
	C	1.47 m		301321
	D	1.67 m		301322
	E	1.92 m		301323
Combine with Side Panels: Medium, Large and Van				
All Thule Omnistor awnings	F	1.02 m	2.30 m	307303
	G	1.52 m		307304
	H	1.72 m		307305
	I	2.00 m		307306



Thule Rain Blocker G2 - Front combinations

Compatible side panel	Awning length		Front combination
Thule Rain Blocker G2 Minivan	2.50 m	T 3200	J + A (Set: 301360)
	2.60 m	TO 4900 - TO 5102	A + A (Set: 301361)
	2.70 m	T 3200	J + K (Set: 301362)
	3.00 m	T 3200 - TO 4900	J + L (Set: 301363)
Thule Rain Blocker G2 Small	2.60 m		B + B
	2.80 m		B + C
	3.00 m		B + D
	3.00 m		F + F + F
Thule Rain Blocker G2 Medium, Large, Van	3.25 m		G + H
	3.50 m		F + G + F
	3.75 m		H + I
	4.00 m		F + I + F
	4.25 m		F + G + H
	4.50 m		F + I + G

Tents - Technical Specifications

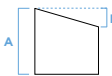


Name					Thule Panorama				Thule QuickFit				Thule Residence G3 for Volkswagen T5/T6			
Stay		Long stay				Short stay				Short stay						
INSTALLATION																
Van		• Ducato H2				• Ducato H2										
Minivan										• VW T5/T6						
FITS																
Awnings		Thule Omnistor 6300 • 6200 • 6002				Thule Omnistor 6300 • 6200 • 6002				Thule Omnistor 5102 • Original Volkswagen awning						
Awning lengths		3.25 m • 3.75 m • 4.00 m				3.25 m • 3.75 m • 4.00 m				2.60 m						
Mounting height (A)		2.30 - 2.50 m				2.30 - 2.50 m										
Vehicle wall		Curved wall				Curved wall				Curved wall						
SPECIFICATIONS																
Maximum tent length		4.00 m				3.00 m				2.60 m						
Fabric		AIRTEX® fabric				RIPSTOP fabric				PVC fabric						
Colour		Black, grey and white				Black, grey and white				Black, grey and white						
Curtains		Optional				Included				Optional						
Windslip		Included				Included				Included						
Wheelcover		Included				Included				Included						
Storage bag		2 Luxury bags				Sport bag				1 Luxury bag						
		Models	A - Mounting height	H	SKU No	Model	A - Mounting height	H	SKU No	Model	SKU No					
		Ducato H2 - 3.25 m	2.30 - 2.50 m	-45 cm	307089	Ducato H2 - 3.00 m	2.30 - 2.50 m	-45 cm	307060	VW T5/T6	301560					
		Ducato H2 - 3.75 m			307090											
		Ducato H2 - 4.00 m			307091											

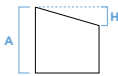
Weight for a 3.75 m tent: 22.8 kg

Weight: 16.4 kg

Weight: 21 kg



A = Distance between bottom of awning cassette and ground  
H = Awning incline



A = Distance between tent rail and ground  
H = Awning incline



Rear Door-mounted Bike Racks - Technical Specifications



Name		Thule WanderWay		Thule Elite Van XT		
SKU No		911001	307340	302013	302018	302043
INSTALLATION						
Van			• Fiat Ducato • Peugeot Boxer • Citroën Jumper ≥ 2007		• VW Crafter ≥ 2017	• Mercedes Sprinter > 2006 • VW Crafter 05/2006-2017
Minivan		• VW T6				
SPECIFICATIONS						
Finish		Anodised/black	Anodised	Black	Black	Black
Standard number of bikes		2	2	2	2	2
Max. number of bikes (optional)		4 (+ 911600 + 911700)	2	2	2	2
Loading weight		60 kg	35 kg	35 kg	35 kg	35 kg
Max. bike weight		30 kg (2-bike) – 20 kg (3-bike)	19 kg	19 kg	19 kg	19 kg
Max. bike weight 4 <sup>th</sup> rail		15 kg	-	-	-	-
Fits E-bikes		•				
Product dimensions (L x W x H)		91 x 152 x 111 cm	130 x 55 x 125 cm	130 x 55 x 125 cm	130 x 55 x 125 cm	130 x 55 x 125 cm
Product weight		13.9 kg	10.5 kg	10.5 kg	10.5 kg	10.5 kg
Sliding rails left-right		•				
Sliding rails in depth						
Lockable platform		Automatic	Manual	Manual	Manual	Manual
Lockable bike holders		•	•	•	•	•
Rail distance (2 bikes)		31 cm	20 cm	20 cm	20 cm	20 cm
Rail distance (max. number of bikes)		15 cm	-	-	-	-
Wheel mounting		Adjustable wheel holders with pump buckles	Adjustable wheel holders with buckles	Adjustable wheel holders with buckles	Adjustable wheel holders with buckles	Adjustable wheel holders with buckles
One-Key System compatible		•	•	•	•	•

Towbar-mounted Bike Racks - Technical Specifications



Name		Thule VeloSpace XT		Thule EasyFold XT	
SKU No		938000	939000	933100	934100
INSTALLATION					
Van		•	•	•	•
Minivan		•	•	•	•
SPECIFICATIONS					
Finish		Anodised/black	Anodised/black	Anodised/black	Anodised/black
Standard number of bikes		2	3	2	3
Max. number of bikes (optional)		3 (+ 938100)	4 (+ 938100)	2	3
Loading weight		60 kg	60 kg	60 kg	60 kg
Max. bike weight		30 kg	30 kg	30 kg	30 kg
Max. bike weight 4 <sup>th</sup> rail		-	19 kg	-	-
Fits E-bikes		•	•	•	•
Product dimensions (L x W x H)		69 x 135 x 79 cm (74 x 135 x 25 cm folded)	73 x 135 x 79 cm (73 x 135 x 31 cm folded)	63 x 123 x 68 cm (63 x 31 x 68 cm folded)	83 x 123 x 86 cm (83 x 31 x 86 cm folded)
Product weight		18.7 kg	20.6 kg	17.9 kg	23.1 kg
Sliding rails left-right					
Sliding rails in depth					
Lockable platform		Manual	Manual	Manual	Manual
Lockable bike holders		•	•	•	•
Rail distance		25 cm	19 cm	22 cm	22/19 cm
Wheel mounting		Pump buckles	Pump buckles	Pump buckles	Pump buckles
Loading ramp		Yes, with accessory 917200		Yes, with accessory 933400	
Power connector		13-pin		13-pin	
One-Key System compatible		•	•	•	•



Water Sport Racks - Technical Specifications



Name	Thule Hullavator Pro	Thule Hull-a-Port Aero	Thule DockGrip	Thule Portage	Thule SUP Taxi XT
SKU No	898000	849000	895000	819000	810001
INSTALLATION					
Van	•	•	•	•	•
Minivan					
SPECIFICATIONS					
Main load type	Kayak	Kayak	Kayak	Canoe	SUP-/surfboard
Load capacity	1 kayak (max. 35 kg)	1 kayak (max. 35 kg)	1 kayak (max. 40 kg)	1 canoe (max. 45 kg)	2 boards (max. 25 kg)
Length of strap	2 x 440 cm	2 x 400 cm	2 x 400 cm	2 x 440 cm	
Rubber protection for buckle	•	•	•	•	
Fits other crafts				Small boat	Fits all types of boards
Fits all mast dimensions					
Lock	•	•	Yes, with accessory 841000	Yes, with accessory 841000	•
Fits Thule ProBar Flex	Only Thule ProBar Flex High - 301647	•	•	•	•
One-Key System compatible	•	•	•	•	•

Winter Sport Racks - Technical Specifications



Name	Thule SnowPack			Thule SkiClick
	S	M	L	
SKU No	732200	732400	732600	729100
INSTALLATION				
Van	•	•	•	•
Minivan				
SPECIFICATIONS				
Load capacity	14 kg	28 kg	42 kg	7 kg
Load capacity skis	Up to 2 pair	Up to 4 pair	Up to 6 pair	1 pair (cross country)
Load capacity snowboards	1 board	Up to 2 boards	Up to 3 boards	
Product dimensions (L x W x H)	37 x 7 x 14 cm	62 x 7 x 10 cm	87 x 7 x 10 cm	11 x 9 x 9 cm
Product weight	2.8 kg	3.8 kg	4.8 kg	0.4 kg
Loading width	25 cm	50 cm	75 cm	
Extra large push-button	•	•	•	
Lockable skis to ski rack/ski rack to vehicle	•	•	•	•
One-Key System compatible	•	•	•	

Box/Basket/Cargo - Technical Specifications



Name	Thule Force XT		
	S	M	L
SKU No	635100	635200	635700
INSTALLATION			
Van	•	•	•
Minivan			
SPECIFICATIONS			
Volume	300 L	400 L	450 L
Product dimensions (L x W x H)	139 x 89.5 x 39 cm	175 x 82 x 45.5 cm	190 x 84 x 46 cm
Internal dimensions (L x W x H)	127 x 78 x 34 cm	162 x 71 x 40 cm	177 x 73 x 41 cm
Load capacity	75 kg	75 kg	75 kg
Product weight	14.3 kg	16.4 kg	18.7 kg
Material	Black Aeroskin		
Mounting system	PowerClick		
Locking system	CentralLock		
Box opening	DualSide		

Name	Thule Canyon XT
SKU No	859002
INSTALLATION	
Van	•
Minivan	
SPECIFICATIONS	
Product dimensions (L x W x H)	127 x 104 x 15 cm
Product dimensions with extension	178 x 104 x 15 cm
Load capacity	65 kg
Product weight	12.3 kg
Fits Thule ProBar Flex	•
Miscellaneous	
Points of attachment adjustable to the roof rack in length	

Name	Thule BackSpace XT
SKU No	938300
INSTALLATION	
Van	•
Minivan	•
SPECIFICATIONS	
Volume	300 L
Product dimensions (L x W x H)	137 x 46.5 x 68 cm
Product dimensions folded (L x W x H)	137 x 46.5 x 23.5 cm
Load capacity	50 kg
Product weight	8.6 kg
Miscellaneous	
Fits onto the Thule VeloSpace XT towbar-mounted bike rack	

NOTE - When mounted on load bars Thule ProBar Flex use Thule T-Track Adapter 697600

Locks - Technical Specifications



Name	Thule Universal Lock					Thule Cab Lock		Thule Van Lock	
SKU No	301406	301419	301407	301408	301409	309830	309831	309832	309833
INSTALLATION									
Van	•	•	•	•	•	•	•	•	•
Minivan	•	•	•	•	•	•	•	•	•
SPECIFICATIONS									
Secures rear doors	•	•	•	•	•			•	•
Secures sliding side doors	•	•	•	•	•			•	•
Secures cabin doors	•	•	•	•	•	•	•		
Material	Solid powder-coated aluminium					Solid lacquered aluminium		Solid powder-coated aluminium	
Colour	White			Black		Grey		Black	
Pack	1 pc	2 pcs	3 pcs	1 pc	2 pcs	2 pcs		1 pc	2 pcs
Weight/pc (netto)	0.540 kg   0.760 kg   0.720 kg (depending on mounting installation)					1.085 kg	1.355 kg	0.525 kg	



› Bring your board  
Bring your bike  
Bring your skis  
Bring your gear  
Bring your kids  
Bring your love  
Bring your passion  
Bring your dreams  
Bring your life







**302552 - EN** - Local variations in product range may occur and products may be subject to change without further notice. With reservation against possible mistake in the contents of the catalogue.  
Concept + graphic design: Hervé Ménard.  
Photography: Bram Declercq, South Side Agency, David Meignan, Eleonora Raggi, Tobias Ilsanker, Fabienne Nury.  
Print: Drukkerij De Maertelaere bvba.

**Thule nv**  
Kortrijkstraat 343 - BE - 8930 Menen  
+32 56 52 88 99 - [InfoRV@thule.com](mailto:InfoRV@thule.com)  
[www.thule.com](http://www.thule.com)

» PART OF THULE GROUP