

Pepsi Diet 500ml



(/Products/Zoom/8461454?shottypid=1&gpeRestricted=False)

Product data

EAN
87170795

Target market
GB, IE

Components

Ingredients

Carbonated Water
Colour (Caramel E150d)
Acids (Phosphoric Acid, Citric Acid)
Flavourings (including Caffeine)
Sweeteners (Aspartame, Acesulfame K)
Acidity Regulator (Sodium Citrate)
Preservative (Potassium Sorbate)

Nutrition

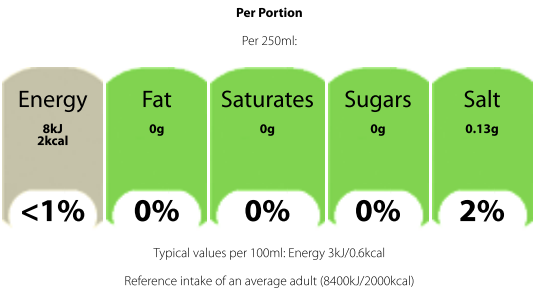
	Per 100ml	Per 250ml
Energy	3kJ/0.6kcal	8kJ/2kcal
Fat	0g	0g
of which Saturates	0g	0g
Carbohydrate	0g	0g
of which Sugars	0g	0g
Protein	0g	0g
Salt	0.05g	0.13g

Per 100ml	Per 250ml
Bottle contains 2 servings	

Calculated Nutrition

	per 100ml	Per 250ml
Energy (kJ)	3	8
Energy (kcal)	0.6	2
Fat (g)	0	0
of which saturates (g)	0	0
Carbohydrate (g)	0	0
of which sugars (g)	0	0
Protein (g)	0	0
Salt (g)	0.05	0.13

Front of Pack Nutrition



Product Description

Brand
Pepsi

Standardised Brand
Brand - Pepsi

Regulated Product Name
Carbonated Low Calorie Cola Flavoured Soft Drink with Sweeteners

Marketing

Company Name
Britvic Soft Drinks Ltd.

Company Address

Hemel Hempstead,
HP2 4TZ,
UK.

Product Marketing

With its light, crisp taste, Diet Pepsi gives you all the refreshment you need - with zero sugar and zero calories

Enjoy the light taste of Diet Pepsi, best served chilled or over ice. Ideal for parties, meals, and celebrations big and small and every day

Pepsi diet soft drink is low calorie cola flavoured soft drink with sweeteners. It contains a source of phenylalanine and comes with zero sugar, zero calories and zero carbs.

Trademark Information

Pepsi Max, Pepsi-Cola and Pepsi Globe are Trade Marks of PepsiCo, Inc.

Distributed under the Authority of PepsiCo, Inc.

Health & Lifestyle

Additives

Sweeteners - Contains

Storage & Usage

Storage Type

Type

Ambient

Preparation and Usage

It is best served chilled.

Storage

Best Before End - See Shoulder of Bottle.

Brandbank Captured Pack Data

Pack Size

500ml ☺

Numeric Size

Numeric Size - 500

Unit (specific)

Unit (specific) - Millilitres

Pack Type

Type - Plastic Bottle

Origin

Place of Provenance - Made in GB

Recycling Scheme

- OPRL

Recycling Other Text

Remember to recycle; our cans and bottles are 100% recyclable
Widely Recycled

Usage Count

Number of uses - Servings

2

Usage Other Text

Bottle contains 2 servings

Customer Services

Return To

Want to get in touch? Call our Consumer Care team in GB & NI on 0800 032 1767, ROI on 1800 696 127 or visit www.pepsi.co.uk and email us.
Britvic Soft Drinks Ltd.,
Hemel Hempstead,
HP2 4TZ,
UK.

Distributor Address

Britvic Soft Drinks Ltd.,
Hemel Hempstead,
HP2 4TZ,
UK.

Telephone Helpline

GB & NI 0800 032 1767
ROI 1800 696 127

Web Address

www.pepsi.co.uk

Extended Data

Safety Warning

Contains a source of phenylalanine.

CAUTION: PRESSURISED CONTAINER, HANDLE WITH CARE.

Languages On Pack

- English

Description Breakdown
Variant - Diet
Product Composition
Carbonated - Carbonated