

# ReadEasy Move 2 Software v5.0.x Standard User Manual English, Revision B

---

## ReadEasy *Move 2*



**VisionAid International**

# Table of Contents

Table of Contents.....	2
Introduction.....	3
Improvement program .....	3
Ownership and intellectual property.....	4
Box contents.....	4
Unpacking.....	5
Carry Handle .....	6
Positioning for use .....	6
Contrast / positioning mat.....	7
Plugging in .....	8
Power adapter .....	8
Connecting the camera .....	8
Turning on / off.....	9
Lighting adjustment.....	11
Controls .....	12
Audio .....	16
Multi-Language.....	17
Reading documents with different languages.....	17
Obtaining additional languages / feature packs.....	17
Activating additional languages .....	17
Supported languages .....	18
Upgrading software .....	21
FAQ and Troubleshooting .....	22
Appendix A: Safety.....	24
Appendix B: Technical Information.....	25

## Introduction

Congratulations on choosing the ReadEasy Move 2 digital capture reading system.

The ReadEasy Move 2 combines ease of use with the highest quality speech output and the world's fastest text recognition. It can capture and read any printed material such as letters, bank statements, newspapers, food packaging etc. and reads the text aloud using a natural sounding voice.

## Improvement program

Users are the best people to help us improve and develop our products so if you have any ideas or suggestions, no matter how small, please do contact us.

## Suggestions contact information

Please use the following methods to contact us regarding your suggestions:

### Email:

[suggestions@visionaid.com](mailto:suggestions@visionaid.com)

### Post:



ReadEasy Move 2 Suggestions  
VisionAid International Ltd.  
Bridge Lodge, Spalding, Lincolnshire  
PE11 3AU  
United Kingdom

### Phone:

+44 (0) 1775 711 977

Thank you and we wish you many hours of enjoyment with your new personal reading assistant!

# Ownership and intellectual property

The software installed on the ReadEasy Move 2 makes use of third party software libraries that are redistributed under their own respective licenses.

LAME is distributed under the terms of the GNU Lesser General Public License (LGPL), a copy of which can be found at <http://www.gnu.org/licenses/lgpl.html> and is included in the software's program directory.

OpenCV is distributed under the terms of the Berkeley Software Distribution (BSD) license, a copy of which is included in the software's program directory.

Copyright (C) 2000-2008, Intel Corporation, all rights reserved.

Copyright (C) 2009, Willow Garage Inc., all rights reserved.

Third party copyrights are property of their respective owners.

## Box contents

Your ReadEasy Move 2 box contains the following items:

1. ReadEasy Move 2 carry case
2. ReadEasy Move 2 digital capture reading system
3. ReadEasy Move 2 camera
4. Power supply and power cord
5. White contrast / positioning mat
6. Laminated quick reference guides (version dependent)
7. Standard paper user manual and optional paper Feature Pack manual
8. Audio CD user manual
9. Over ear headphones with in-line volume control
10. Optional keypad (if Keypad or Low Vision Touch Feature Pack purchased)
11. Optional trackball (if Low Vision Touch Feature Pack purchased).

If any of these items are missing from your package, please contact your local distributor.

# Unpacking

Lift ReadEasy Move 2's carry bag out of its shipping box and lay it down onto a flat surface with the shoulder straps touching the table, and the handle (which is normally located on the top of the bag when upright) facing towards you.

The bag has two main compartments, both with double zips as well as a small single zip pocket (located right on the top) and two small zipped side pockets.

Firstly, remove the main ReadEasy Move 2 unit from the padded Velcro sealed bag in the lower compartment. ReadEasy Move 2's handle will be facing upwards ready to grasp hold of to help you easily remove it.

Then, remove the white contrast / positioning mat (and large print documentation if required), located above the padded Velcro bag, held in place by a divider.

Then remove the camera, power adapter, power cable and headphones (if required) which are located in the higher double zip compartment.

Connect the power cable to the power supply 'brick'.

If you have purchased the optional feature pack, the keypad and trackball will also be located in the same compartment. Remove these if present and required.





## Carry Handle



ReadEasy Move 2 features an integrated foldable carrying handle making it easy and safe to move from room-to-room.

The carry handle lays flat against the back of the unit when not in use. By lifting the handle into its upright position it is then easy to grasp and move the unit.

When packing ReadEasy Move 2 back into its carry bag, you can lower the unit into the Velcro sealed padded section with the handle up and leave it facing upwards making it easy to grasp when removing the unit.

## Positioning for use

When placing ReadEasy Move 2 on a surface to use, ensure that the surface is flat and is large enough for you to position the items you wish to capture under the camera. Also ensure that the unit is not directly underneath any bright lighting, as this can affect its accuracy when reading glossy documents.

## Contrast / positioning mat

ReadEasy Move 2 also includes a contrast / positioning mat. This can be used if the surface where the ReadEasy Move 2 is located is very dark or textured and the item wishing to be read is small (e.g. a postage receipt or small packet of food).

To position the mat, ensure ReadEasy Move 2 is located on a flat surface where you wish to use it. Then, make sure the contrast mat is folded flat (the top section is folded over for transport). There is a “finger” at the top of the mat that can be slid around the back of the ReadEasy Move 2, from left to right. Ensure the “finger” is held flat with the index finger on your left hand as you slide the mat from right to left until it fits snugly up against the left side.

When in position, the mat also doubles as a positioning guide, as its size roughly represents the capture area.



# Plugging in

## Power adapter

1. Plug the power cable into the power adapter.
2. Plug the power tip from the power brick into ReadEasy Move 2's power socket, located on the back side, in the very bottom right corner.
3. Insert the mains plug into a wall socket and ensure it is switched on.





## Connecting the camera

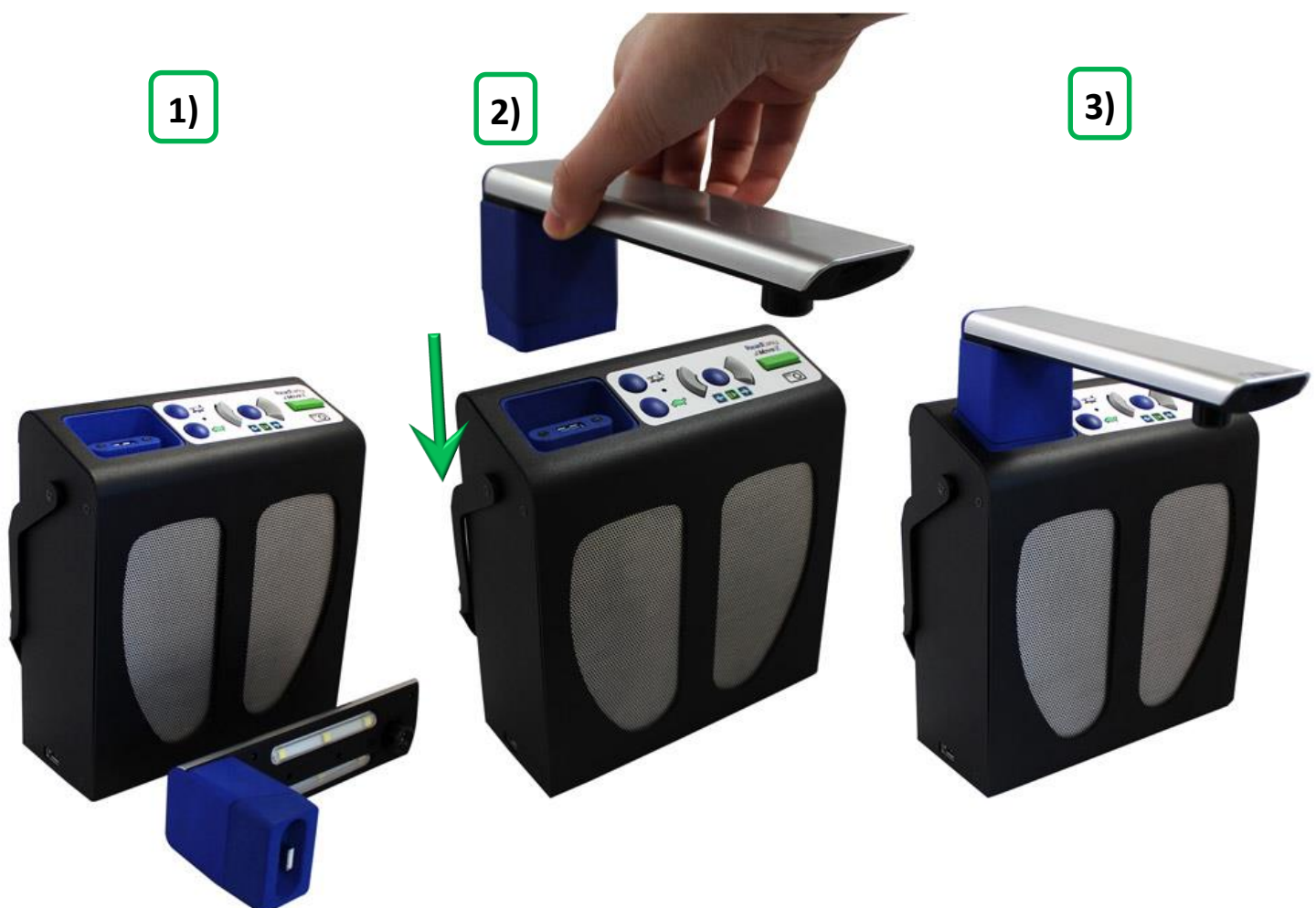
ReadEasy Move 2 features a unique, magnetised, easy release camera system.

The slot for the camera (coloured blue) is located on the top edge of the main unit, on the left hand side.

With the rectangular section of the camera facing downwards (also coloured blue) and the main length of the camera arm facing towards you, slowly lower the blue rectangular section over the blue camera slot. As you do so you will feel it magnetise firmly into position.

The camera will only go into its slot one way round and does not require much force at all.

To disconnect the camera, grasp it firmly at the back (above the camera slot) and simply pull it directly upwards.



## Turning on / off

To turn on ReadEasy Move 2, ensure it is plugged in, mains power is switched on and that the camera is connected. Then, press the on / off button, located on the right side of the machine, 1 inch, (2.5 cm), from the top and 0.5 inch, (1.3cm), from the back.



After pressing, the on / off button will immediately illuminate with a blue ring. You will not hear anything from the device until it announces that is ready, approximately 13 seconds after being switched on.

To turn ReadEasy Move 2 off, simply press the on / off button again.

### **IMPORTANT:**

**It takes approximately 10 seconds for ReadEasy Move 2 to power off when the on / off button has been pressed, so if you wish to unplug the unit, please do not do so until this time has passed.**

## Positioning documents for capture

ReadEasy Move 2 captures an area slightly larger than an A4 or Letter sized page. Documents must be in a landscape orientation with the long edge of the document going left to right.

To align your document, simply place it up against the front of the ReadEasy Move 2 and slide it so that the right edge of your document is in line with the right edge of ReadEasy Move 2.

The orientation of the document will not influence the recognition of the text.

When capturing extremely thick objects, due to the reduced distance to the camera, ReadEasy will capture a smaller area. It may therefore be necessary to raise ReadEasy Move 2 up, (by placing a thick book underneath it for example), to ensure it captures enough of the desired object.



### POSITIONING TIP:

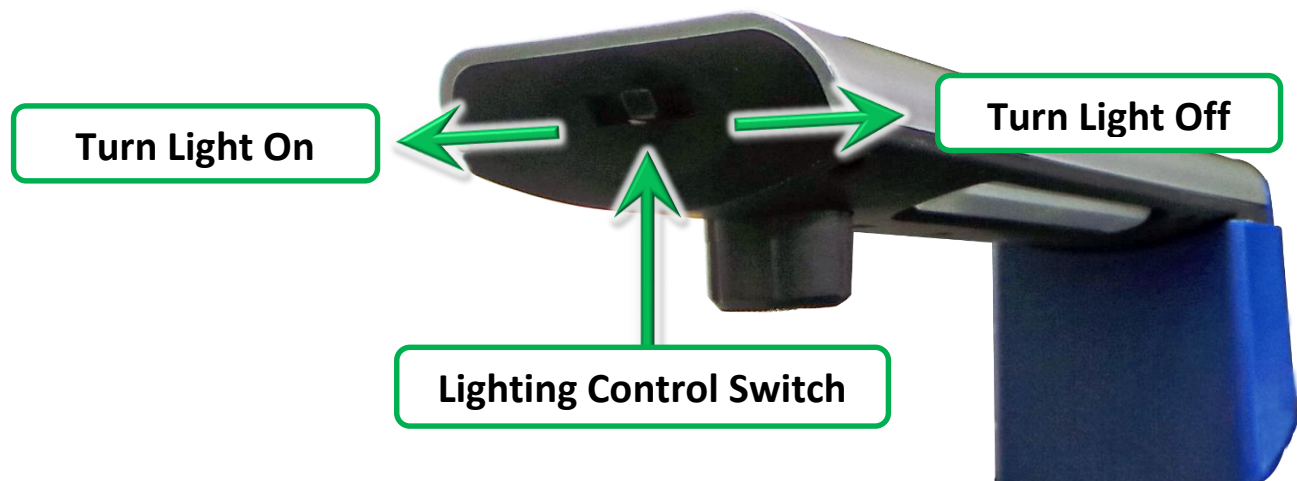
**ReadEasy Move 2 has powerful document straightening and rotation abilities but for the highest accuracy and speed, try to position your document as squarely as possible and ensure pages are relatively flat.**

## Lighting adjustment

ReadEasy Move 2 features integrated, LED lighting. By default, (and for most scenarios), the lighting should be turned off. Turning the lighting on can help if there is very little ambient light in the room but may cause reflections on glossy documents.

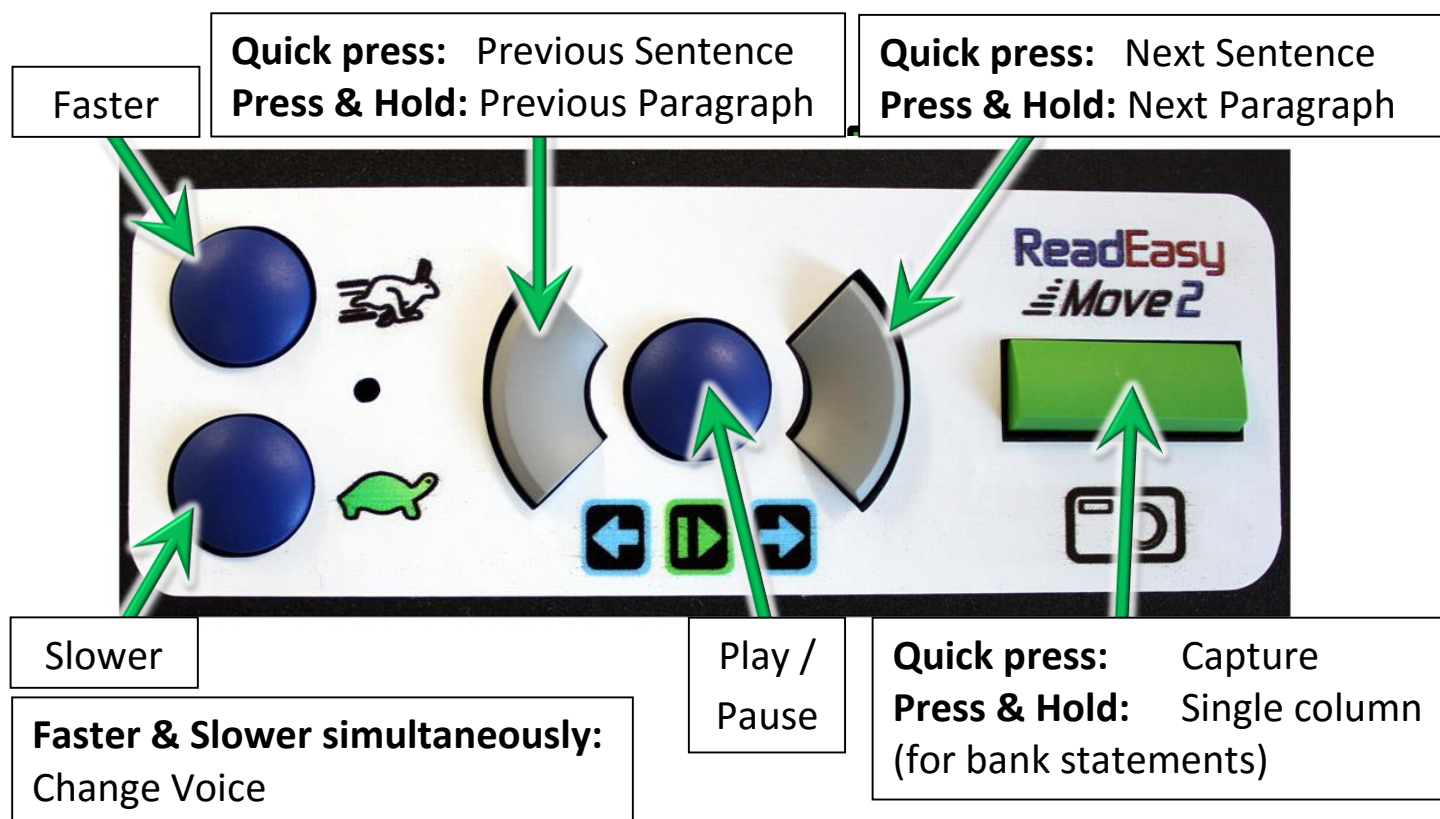
The lighting control switch is located on the front the camera head.

To turn the lighting on, move the switch to the left. To turn the lighting off, move the switch to the right.



## Controls

The main controls are all located on the top of the unit. There are a total of 6 tactile buttons.



## Standard capture (quick press)

To capture a document and have it read aloud, ensure you have a document under the camera and then press the green rectangular button. This is the farthest button to the right, on the top of the unit.

ReadEasy Move 2 features an intelligent motion detection system that won't allow your document to be captured if it is moving. This allows you time to press capture and position your document underneath ReadEasy Move 2 with both hands, (e.g. for a book). Your document will be captured two seconds after the last movement was detected.

An audible "beep" will be emitted as movement is detected.

To override this function and force ReadEasy Move 2 to capture your document, simply press Capture again.

Your document will start being read aloud a few seconds later.

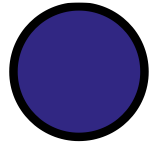


## Single column capture (press and hold)



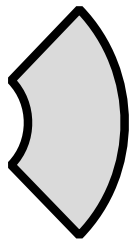
To capture documents with tabular information, (like bank statements), simply press and hold the capture button until “capturing single column” is announced. This is the farthest button to the right, on the top of the unit. This forces ReadEasy Move 2 to read across columns of information.

## Play / pause



To start and stop the reading of your document, press the play / pause button. This is the blue circular button, located between the two grey quarter-circles. It is the third button from the right.

## Next sentence (quick press)

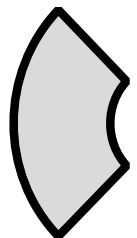


To navigate forwards one sentence, press and release the right grey quarter circle button, which is the second button from the right.

## Next paragraph (press and hold)

To navigate forwards one paragraph, press and hold the right grey quarter circle button, which is the second button from the right.

## Previous sentence (quick press)

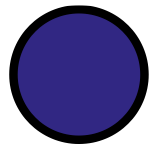


To navigate backwards one sentence, press and release the left grey quarter circle button, which is the fourth button from the right.

## Previous paragraph (press and hold)

To navigate backwards one paragraph, press and hold the left grey quarter circle button, which is the fourth button from the right.

## Faster and slower



To increase or decrease the speed of the reading voice, press the faster or slower buttons. These are the two vertically in-line, blue, circular buttons located just to the right of the camera on the top of the unit.

## Change Voice

To change the reading voice, press the faster and slower buttons simultaneously. These are the two vertically in-line, blue, circular buttons located just to the right of the camera on the top of the unit.

## Force full restart

To force ReadEasy Move 2 to fully restart, simply press and hold Capture and Faster buttons together. This should only be used for troubleshooting purposes. This is different to turning the unit on and off using the power button as the software and hardware on ReadEasy is fully re-initialised using restart.

# Audio

## Volume adjustment

To increase or decrease the volume, simply raise or lower the volume slider. This is located on the right hand edge of the machine, near the front.

Please note, it is not possible to completely shut off the volume using just the slider.

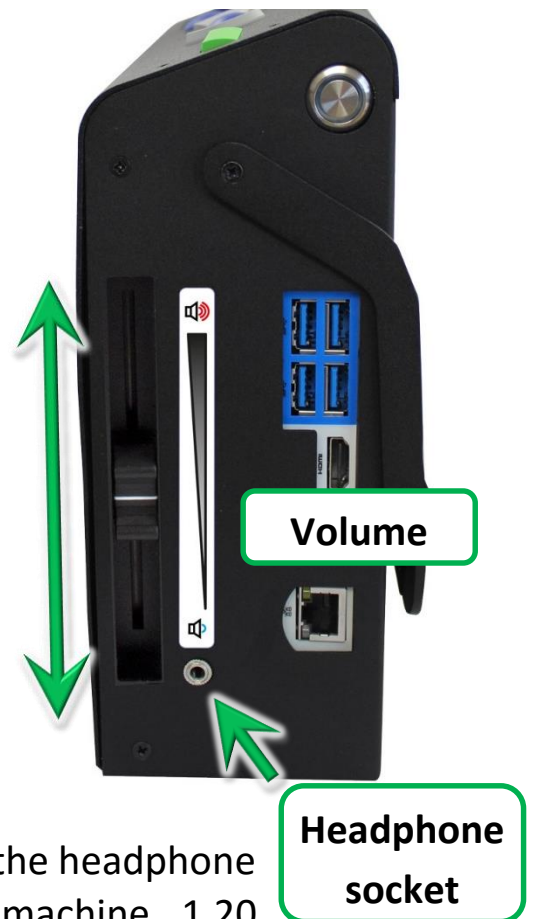
## Headphones

ReadEasy Move 2 includes a pair of over ear headphones with in-line volume control. They have a standard 3.5 mm audio jack connector.

To use the included headphones, (or any other that you may already own), simply plug them into the headphone socket, located on the right hand edge of the machine, 1.20 inches, (3 cm), from the front and 1.40 inches, (3.5 cm), up from the bottom.

Volume from the loud speakers will automatically be muted as soon as the headphones are plugged in.

To alter the headphone volume, we recommend using the in-line volume wheel, located on the headphone wire. It is also possible to adjust the volume of the headphones using the main volume slider.



# Multi-Language

## Reading documents with different languages

ReadEasy Move 2 offers automatic language detection. This means that whatever the language of the document is that you place under ReadEasy Move 2, it will automatically change its reading voice to the voice of the document. This is subject to the languages that are available and installed.

This happens on a per-sentence basis so even single pages with multiple languages will read in the correct voice.

### **IMPORTANT:**

**For multi-language to be available, you must have the Keypad Feature Pack, together with the additional languages you require.**

## Obtaining additional languages / feature packs

If you wish to purchase an additional voice pack or feature pack, please contact your local distributor.

## Activating additional languages

Once you have contacted your distributor and purchased an additional language, they will provide you with a coded piece of paper. Capturing this document will automatically unlock and enable the new language.

## Supported languages

ReadEasy supports over 30 languages. Please note, some languages do not support automatic switching (they cannot be automatically detected and must be set manually).

We provide two sets of voices. The first is the Nuance Vocalizer range of voices. The second is the Ivona set of voices. Depending on your country, you will most likely have a preference for one or the other once you have heard them.



### NUANCE Vocalizer Voices

Language	Auto Switch	Voices
Arabic	No	<b>Voice only – No OCR:</b> Maged (Male)
Catalan	Yes	Nurian (Female)
Chinese	No	<b>Basic Support:</b> Sin-Ji (Female) Hong-Kong Cantonese, Ting-Ting (Female) Chinese Mandarin, Ya-Ling (Female) Taiwanese Mandarin
Czech	Yes	Zuzana (Female)
Danish	Yes	Ida (Female)
Dutch	Yes	Claire (Female - Netherlands) Xander (Male - Netherlands) Ellen (Female – Belgian)
English	Yes	Daniel (Male - British) Serena (Female - British) Sangeeta (Female – British Indian), Jill (Female - American) Samantha (Female - American) Tom (Male - American), Karen (Female - Australian) Lee (Male - Australian), Tessa (Female – South African)
Finnish	Yes	Mikko (Male)
French	Yes	Felix (Male - Canadian) Julie (Female - Canadian) Thomas (Male - French) Virginie (Female - French)
Hindi	No	<b>Voice only – No OCR:</b> Lekha (Female)
Gaelic	No	<b>OCR only – no voices</b>
German	Yes	Anna (Female) Steffi (Female) Yannick (Male)
Greek	Yes	Alexandros (Male)
Hungarian	Yes	Eszter (Female)



Italian	Yes	Paolo (Male) Silvia (Female)
Japanese	No	<b>Voice only – No OCR:</b> Kyoko (Female)
Korean	No	Narae (Female)
Norwegian	Yes	Stine (Female)
Polish	Yes	Agata (Female)
Portuguese	Yes	Joana (Female - Portuguese) Raquel (Female - Brazilian)
Romanian	No	Simona (Female)
Russian	Yes	Milena (Female)
Slovak	No	Laura (Female)
Spanish	Yes	Diego (Male - Spanish) Monica (Female - Spanish) Javier (Male - Mexican) Paulina (Female - Mexican)
Swedish	Yes	Alva (Female) Oskar (Male)
Thai	No	<b>Voice only – No OCR:</b> Narisa (Female)
Turkish	Yes	Aylin (Female)



## Ivona Voices

Language	Auto Switch	Voices
Danish	Yes	Mads (Male), Naja (Female)
Dutch	Yes	Lotte (Female - Netherlands), Ruben (Male - Netherlands)
English - American	Yes	Eric (Male), Ivy (Female), Jennifer (Female), Joey (Male), Kendra (Female), Kimberly (Female)
English - British	Yes	Amy (Female), Brian (Male), Emma (Female)
English – Australian and Welsh	Yes	Nicole (Female – Australian), Russel (Male – Australian), Geraint (Male – Welsh), Gwyneth (Female – Welsh)
French	Yes	Chantal (Female – Canadian), Celine (Female – French), Mathieu (Male – French)
German	Yes	Hans (Male), Marlene (Female)
Icelandic	No	Dora (Female), Karl (Male)
Italian	Yes	Carla (Female), Giorgio (Male)
Polish	Yes	Agnieszka (Female), Ewa (Female), Jacek (Male), Jan (Female), Maja (Female)
Portuguese	Yes	Crisitano (Male – Portuguese), Ricardo (Male - Brazilian Portuguese), Vitoria (Female - Brazilian Portuguese)
Romanian	No	Carmen (Female)
Russian	Yes	Tatyana (Female)
Spanish	Yes	Conchita (Female - Castilian), Enrique (Male – Castilian), Miguel (Male – American), Penelope (Female – American)
Swedish	Yes	Astrid (Female)
Welsh	No	Geraint (Male), Gwyneth (Female)
Turkish	Yes	Filiz (Female)

# Upgrading software

ReadEasy Move 2's software can be upgraded as new versions become available. To find out if an updated version is available, please contact your local distributor or check on the VisionAid International Ltd website.

## Determining your current version

For ReadEasy Move 2 systems without a feature pack, you can find out your current version, (at time of shipping) from the front cover of the user manual or audio user manual CD.

For users with a feature pack, the currently installed version can be found by navigating to:

“Settings” -> “System” -> “Version”.

## Determining the latest version available

Please either contact your local distributor or for users with internet access, visit the support section on the VisionAid International Ltd website.

## How to upgrade

Updated software can either be downloaded from the VisionAid International Ltd website or obtained on a USB memory stick from your distributor.

If downloading, the software must be transferred to the root folder of a USB memory stick.

Then insert the memory stick into one of the USB ports once ReadEasy Move 2 has started and announced it is ready. The upgrade process will begin automatically and you will be prompted when required.

# FAQ and Troubleshooting

Here is a list of common questions and problems with their solutions:

**PROBLEM: ReadEasy Move 2 doesn't do anything when I press any of the buttons.**

**Answer 1:** Make sure ReadEasy Move 2 is correctly plugged in and turned on. The on / off switch will have an illuminated blue ring surrounding it when the unit is powered. Please refer to "Plugging in" on page 8 and "Turning on / off" on page 9 for more information.

**Answer 2:** If you are not using headphones, ensure that none are connected as ReadEasy Move 2 will automatically mute the volume when they are connected. Please see page 16 for more information on headphones.

**Answer 3:** Force a restart of ReadEasy Move 2 by pressing and holding Capture and Faster buttons together.

**PROBLEM: When I try to capture a document, after I press capture, ReadEasy Move 2 just keeps beeping.**

**Answer:** Something is continually activating the automatic motion detection. If you are capturing a book, ensure the pages are not moving. Also ensure there is nothing else moving in the capture area.

Another option is to override the motion detection by simply pressing capture again.

**PROBLEM: ReadEasy Move 2 doesn't seem to be reading my entire document.**

**Answer 1:** Ensure your document is correctly positioned. If it is an A4 or Letter page, ensure it is in landscape orientation. One of the long edges of the document should be touching ReadEasy Move 2's case edge and the shorter right side of the document should be in line with the right side of the ReadEasy Move 2.

If this doesn't help, firstly try sliding the document left slightly before capturing. If this doesn't help, try sliding it right slightly before capturing.

**Answer 2:** Is your document larger than A4 or US Letter size? If so, it will not be possible to capture all of it. If possible, try re-positioning the document so that the part of the page you wish to read is within ReadEasy Move 2's capture area.

**Answer 3:** Is your document thicker than an inch? If so its corners may be being cut off during capture. Try sliding the document towards you by half an inch.

Alternatively, try raising ReadEasy Move 2 up by the same height as the object you're capturing – a hardback book makes for a sturdy platform.

**PROBLEM: I'm trying to read a bank statement or tabular information but ReadEasy Move 2 is reading down the columns rather than across them.**

**Answer:** When capturing tabular information or bank statements, press and hold the capture button to force ReadEasy Move 2 to read across columns.

**PROBLEM: ReadEasy Move 2 is inserting strange characters before and after my document.**

**Answer:** Is ReadEasy Move 2 sitting on a patterned or wood grain surface? If so, this can sometimes cause it to recognise odd characters before and after your document. Try using the supplied contrast mat or moving ReadEasy Move 2 to a different surface.

**PROBLEM: ReadEasy Move 2 is reading words incorrectly in roughly the same location on each page.**

**Answer:** Ensure you are not capturing a glossy document with ReadEasy Move 2's lighting turned up to a high brightness level. Please see page 11, "ReadEasy Move 2 lighting adjustment" for details on how to change the lighting level.

**PROBLEM: ReadEasy Move 2 is telling me the camera is not connected.**

**Answer 1:** Ensure the camera is correctly located into its slot on top of the machine. For more information, please see "Connecting the camera" on page 8.

**Answer 2:** Turn off ReadEasy Move 2 if it is on, disconnect the camera, and then disconnect the power cable going into the back of ReadEasy Move 2. Leave the unit unplugged for 10 minutes. Then, re-connect the power cable, locate the camera into its socket, and turn ReadEasy Move 2 on.



**Answer 3:** Force a restart of ReadEasy Move 2 by pressing and holding Capture and Faster buttons together.

## Appendix A: Safety

- Handle the ReadEasy Move 2 with care. Rough handling may damage internal components and will void your warranty.
- Contact your VisionAid International distributor to service this equipment if necessary.
- Do not open or remove any parts of the ReadEasy Move 2 as it will void the warranty.
- Do not expose the ReadEasy Move 2 to excessive heat or direct sunlight.
- Do not use the ReadEasy Move 2 near inadequately shielded medical devices.
- To avoid risk of electrical damage, keep your ReadEasy Move 2 away from fluids and chemicals.
- Always unplug ReadEasy Move 2 before cleaning. Use a soft damp cloth to clean the exterior. Do not use cleaning agents or abrasive materials as they will damage your unit.

Use of the ReadEasy Move 2 other than described in this manual will exclude it from warranty.

## Appendix B: Technical Information

General information	
Footprint (WxD)	195 x 80 mm 7.6 x 3.1 inches
Unit dimensions (camera detached) (WxDxH)	195 x 80 x 215 mm 7.6 x 3.1 x 8.3 inches
Unit dimensions (camera attached) (WxDxH) (footprint remains unchanged)	195 x 330 x 265 mm 7.6 x 13 x 10.4 inches
Weight:	1.60 kg (3.5 lbs)
Camera:	High resolution 5 MP
Headphone connection:	3.5 mm stereo jack

Operating conditions	
Relative Humidity:	<70%, no condensation
Temperature:	0 to 35 °C

Storage and transport conditions	
Relative humidity:	<95%, no condensation
Temperature:	-20 °C to 60 °C