



“Empowering Your Vision”



User's Manual

IMPORTANT SAFETY INSTRUCTIONS

READ THESE INSTRUCTIONS

CLEAN WITH A DRY SOFT CLOTH

***DO NOT WALK OR DRIVE WITH THE**

E2 BY NUEYES*

**DO NOT EXPOSE INTERIOR
LENSES TO SUNLIGHT**

***CHARGE YOUR BATTERY
BEFORE USE***

What's Included

CAREFULLY UNPACK AND CONFIRM THE FOLLOWING PARTS ARE INCLUDED



← Your e2 Device

← Cleaning Cloth

← Block Charger

← Charging Cord

↑
Remote Control (VR Applications/
Updates via e2 App)

How to Put On Your e2 For Maximum Clarity And Comfort

1. Please turn on your e2 by pressing the power button on the below right-hand side of the product



****PLEASE NOTE OUR APPLICATION WILL TAKE 10-12 SECONDS TO LOAD. DO NOT PRESS ANY BUTTONS****

2. Align the lenses/screen to your eyes



3. Once aligned gently place the strap over your head



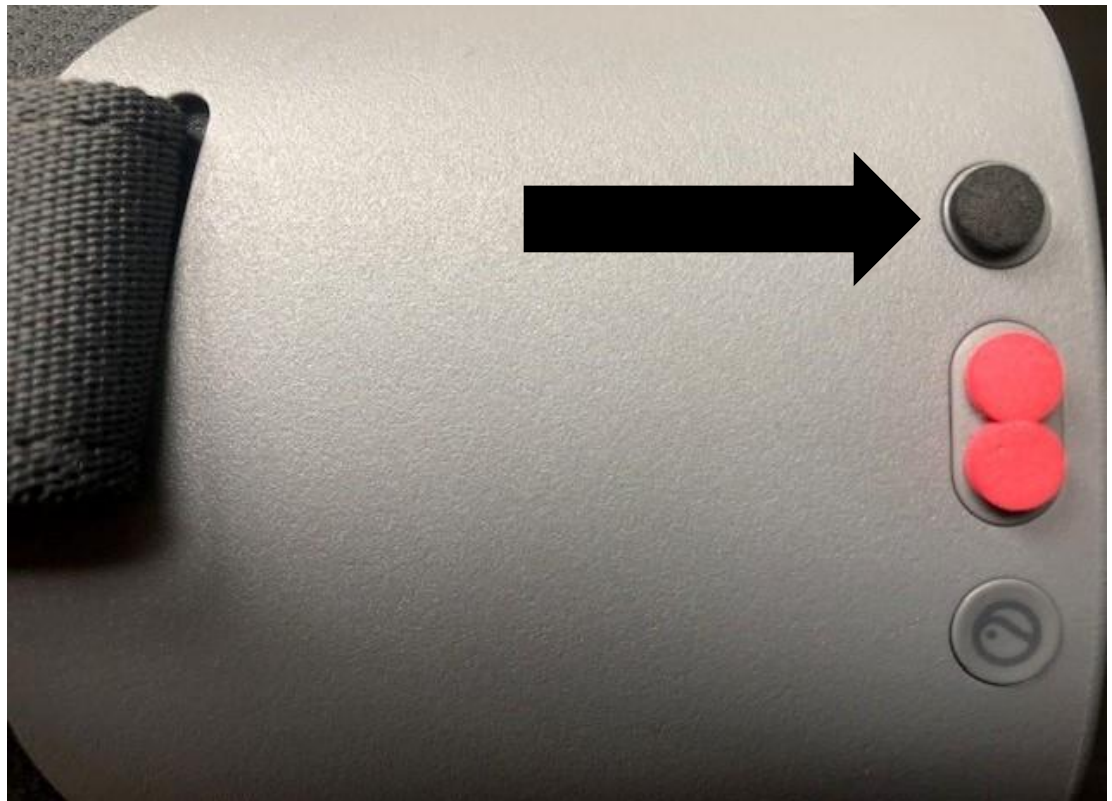
4. Once strap is on your head, adjust the side straps tighter or looser for maximum comfort and clarity



*****PLEASE NOTE IF THE IMAGE DOES NOT LOOK CLEAR TO YOU ADJUST THE e2 UP OR DOWN ON YOUR FACE*****

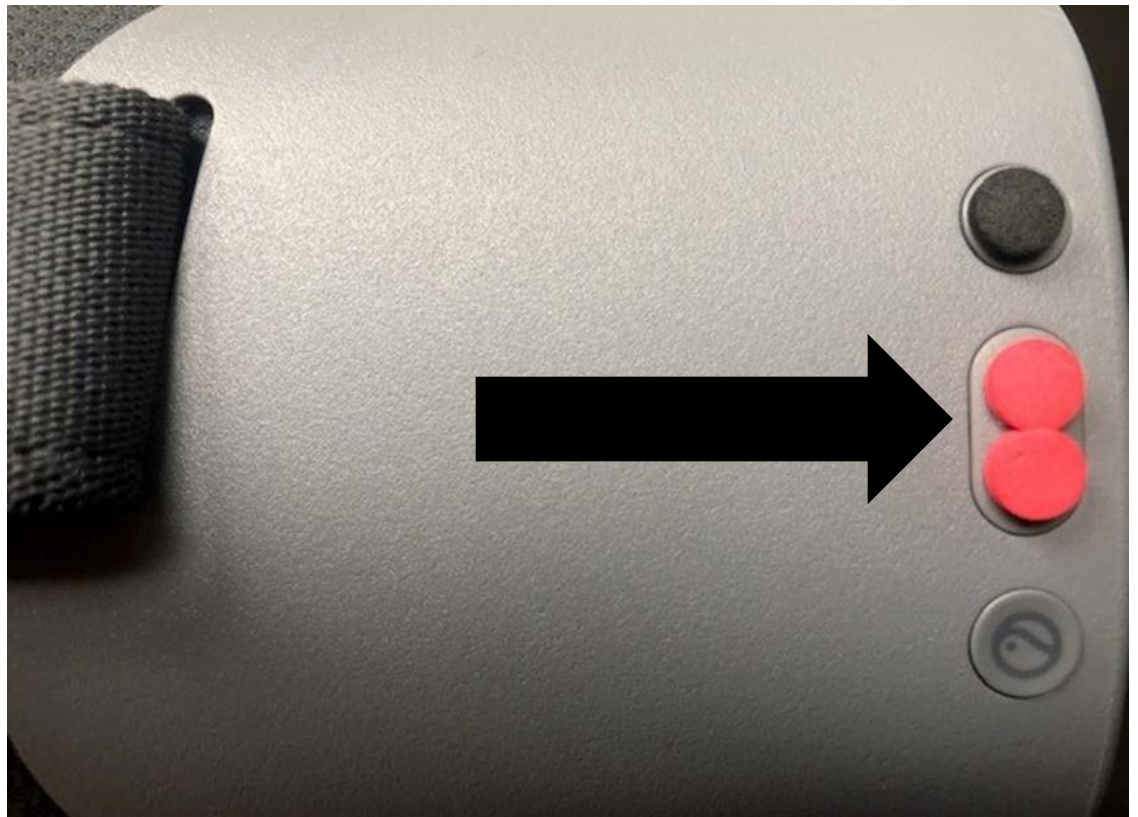
Magnifying with Your e2

1. To increase magnification, press the top button on the right-hand side of your e2



When you reach the maximum 18x of magnification an icon displaying MAX will appear.

2. To decrease magnification, press the middle button on the right-hand side of your e2



Once at 2x magnification an icon displaying the word MIN will appear

Changing Contrast with Your e2

1. To change contrast: Press the Left or Right underside (Volume) button of your e2. The contrasts will cycle through.

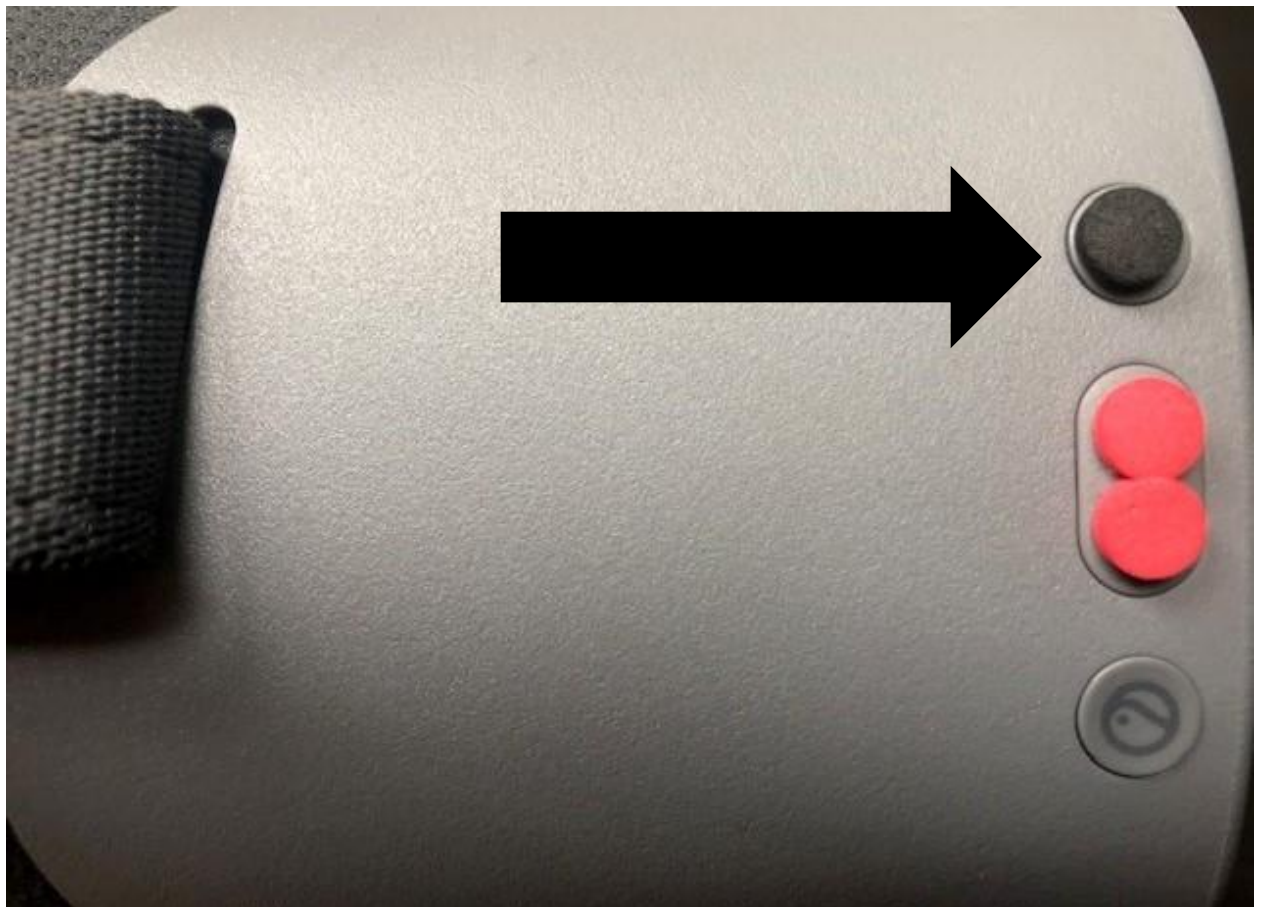


- Press 1x Black on White
- Press 2x White on Black
- Press 3 x Normal Video

Using OCR-Text To Speech with e2

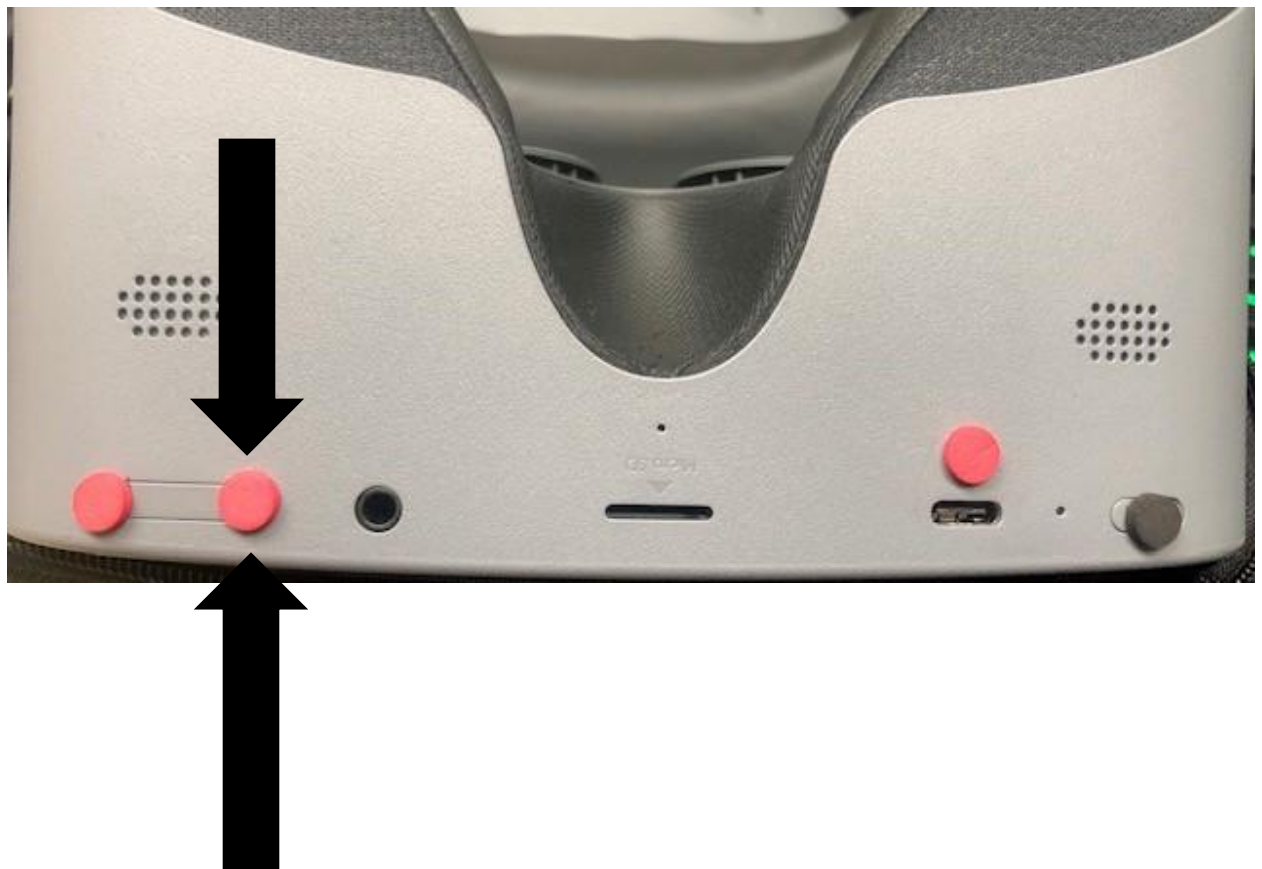
1. To use the OCR feature: Press and hold down the zoom, or magnification button for 2 seconds.

The OCR will start on its own



E2 Menu

1. To access your e2 Menu: Press and hold down the contrast/volume or left underside button for 2 seconds



2. Once in the menu you have four options.
 - **Vision** (Brightness, Language)
 - **OCR** (Gender voice, Speed, Volume, Text Color, Highlight Color)
 - **Settings** (Where to set up WIFI)
 - **Update** (OTA - Over the Air)
3. To select each option, press the middle right button (decrease magnification)
4. To toggle an option, press the top right button (increase magnification button)
5. To exit please hold the contrast button for 2 seconds.

Turning OFF/ Powering Down Your e2

1. Simply press and hold the power button for 2 seconds. The NuEyes logo will appear (Chimes) Screen will turn black indicating the device is off.



2. Lay down the device to go into “sleep mode”

Charging Your e2

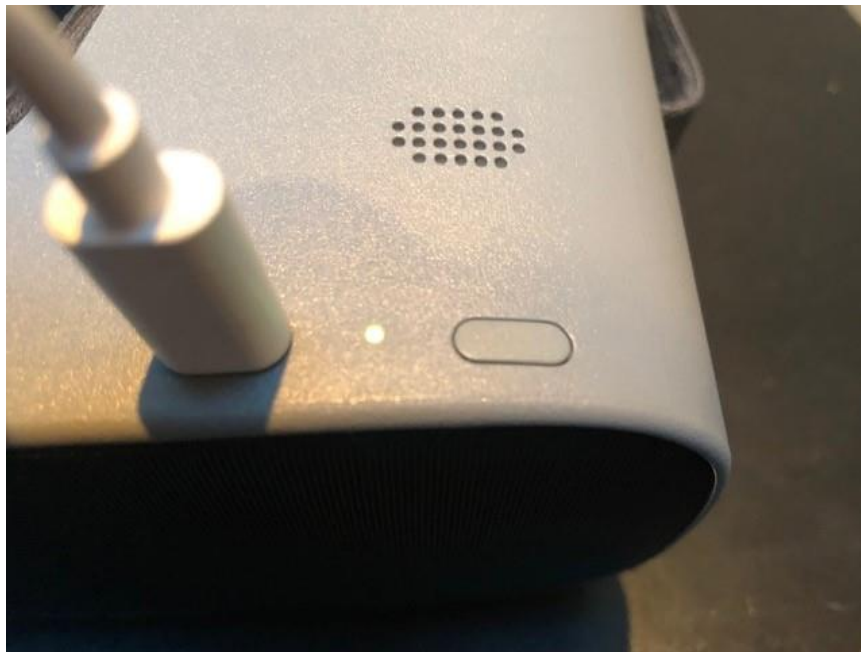
Simply plug your USB cord into the hole next to the power button.



Battery Life

3 to 8 hours (depending on use)

1. A light appears next to the charging plug indicating it is charging. (Red Light needs charge)



2. Blue light, charging - Forest green light, fully charged. (30min to 1 hour)
3. If you are not sure it is charging, please (quick press power button) look in screen, large white battery shows charging.

Rebooting Your e2

Press power button for 10 seconds

Turn device on by pressing power button

NuEyes app will load

TRAINING VIDEO

<https://youtu.be/-79ImvpUmeU>

Quick Reference Guide:

- Black Dot Bottom right **POWER BUTTON**
- Orange Dot Bottom mid **MARKER FOR USB PLUG IN**
- Upper Right-Hand Black dot **INCREASE MAGNIFICATION/Select**
- Upper Right Hand 2 Red dots (1 button) **DECREASE MAGNIFICATION/SELECT**

TRAINING VIDEO

- <https://www.youtube.com/watch?v=-79ImvpUmeU>

Technical Specifications

Display **3K**

CPU **Qualcomm Snapdragon 835**

Weight **268g**

Refresh rate **90hz**

Storage **64G**

Content **NuEyes e2 APP**

Tracking **3DOF**

Camera **1 RGB Camera**