

SuperNova

Magnifier & Speech

Version 16



Dolphin Computer Access

Publication Date: 01 December 2016

Copyright ©1998-2016 Dolphin Computer Access Ltd.

Technology House
Blackpole Estate West
Worcester WR3 8TJ
United Kingdom
Tel: +44 (0) 1905 754577
Fax: +44 (0) 1905 754559

All Rights Reserved World-wide.

Contents

- 1. How to find help 11**
 - 1.1 Use the quick reference booklet 11**
 - 1.2 Get help using an application 11**
 - 1.2.1 Move within help topics 12
 - 1.2.2 Move between Help topics 13
 - 1.2.3 Switch between Help and your application 13
 - 1.2.4 Add personal notes 14
 - 1.3 Get Help from the SuperNova Control Panel 14**
 - 1.3.1 Use the Help Button 15
 - 1.3.2 Explore the Help menu 15
 - 1.4 Get support for SuperNova 16**
 - 1.4.1 Find help on the Dolphin website 16
 - 1.4.2 Contact your Dolphin Dealer for support 16
 - 1.4.3 Contact Dolphin UK Product Support 17
 - 1.4.4 Contact Dolphin USA Product Support 17
 - 1.4.5 Find your product version number and your product serial number 18
 - 1.4.6 Get further product training 18

2.	<u>Install and Set Up</u>	21
2.1	Start SuperNova	21
2.2	Run SuperNova for the first time	21
2.3	Quit SuperNova	22
3.	<u>SuperNova Control Panel</u>	23
3.1	Introducing the SuperNova Control Panel	23
3.2	Keyboard commands to get around the SuperNova Control Panel	24
3.3	Settings in the SuperNova Control Panel.....	26
3.4	Change the appearance of the SuperNova Control Panel...	27
3.5	Close the SuperNova control panel	27
4.	<u>Magnifier</u>	29
4.1	Turn magnification on or off.....	29
4.2	Change magnification size	29
4.3	Change Magnifier view	30
4.4	Change size and position of the magnified window	32
4.5	View other parts of the screen	33
4.6	Get an overview of the magnified window position.....	37
4.7	Create static magnified windows to display information	37
4.7.1	Create a Hooked Area using the keyboard.....	38
4.7.2	Modify a Hooked Area using the keyboard.....	39
4.7.3	Delete a Hooked Area using the keyboard	39
4.7.4	Create a Hooked Area using the mouse.....	40
4.7.5	Show or hide Hooked Areas.....	41
5.	<u>Screen enhancements</u>	43
5.1	Make the screen easier to see.....	43
5.2	Make the focus easier to see.....	44
5.3	Make the pointer easier to see	45
6.	<u>Voice settings</u>	47
6.1	Turn the voice off or on	47
6.2	Change volume	48
6.3	Change reading speed.....	48
6.4	Change voice.....	49
6.5	Change reading voice language	50
6.5.1	Enable automatic language switching	51

6.6 Change speech synthesiser	52
7. Reading and typing	55
7.1 Read character	55
7.2 Read word.....	55
7.3 Read line	56
7.4 Read focus.....	56
7.5 Read control	56
7.6 Read window	57
7.7 Read date and time	57
7.8 Read continuously	57
7.8.1 Read From Here with the Dolphin Cursor	58
7.8.2 Enhance Read From Here	59
7.9 Read using the mouse	60
7.9.1 Click and read	60
7.9.2 Read text under the mouse pointer position	60
7.10 Change what is spoken when typing.....	61
7.11 Announce capital letters.....	62
7.11.1 Turn on capital announcement.....	62
7.11.2 Turn on capital announcement when reading lines	63
7.11.3 Using sounds to indicate capitals	64
7.11.4 Using a pitch change to indicate capitals when spelling characters.....	65
7.12 Change how repeated characters are read	66
8. Line View	69
8.1 Start Line View	69
8.2 Scroll text in Line View	70
8.3 Change the colour, font and items displayed in Line View.	71
9. Doc Reader	73
9.1 Launch Doc Reader	73
9.2 Control reading	74
9.3 Exit Doc Reader	75
10. Dolphin Cursor	77
10.1.1 Turning the Dolphin cursor on and off	77
10.1.2.....	78
10.1.3 Moving the Dolphin cursor using keyboard commands	78
10.1.4 Moving the Dolphin cursor using the mouse pointer.....	78

11. Profiles	81
12. Guest Mode and Emergency Mode	85
13. Startup	85
13.1 Limitations of Guest Mode.....	86
14. Settings Files	89
14.1 Create Application Settings.....	89
14.2 Create Situation Settings.....	90
14.3 Save setting changes.....	91
14.4 Change Map file.....	91
15. Media	95
15.1 Media Scan and Read	95
15.1.1 Scan and read a file	95
15.1.2 Scan and read printed material	96
15.1.3 Adjust "Scan and Read" settings.....	97
15.2 Media Books	97
15.2.1 Open a file in the SuperNova Reader:.....	97
15.2.2 Open a book from an online library	98
15.2.3 Open the last book you were reading.....	99
15.2.4 Open, copy or delete an existing book	99
15.3 Media News, Radio Stations and Podcasts	100
15.3.1 Read a news article.....	100
15.3.2 Listen to a radio station	101
15.3.3 Listen to a podcast.....	101
15.3.4 Adjust the favourite news, radio station and podcast listings	102
15.4 SuperNova Reader keyboard commands	102
16. Connect and View	105
16.1 Camera Connect and View	105
16.1.1 Acquiring a suitable camera and stand.....	106
16.1.2 Setting up your workstation	106
16.1.3 Selecting the camera in SuperNova	106
16.1.4 Using your camera with SuperNova	107
16.1.5 Camera settings.....	113

16.2 Whiteboard Connect and View	113
16.2.1 Connecting to the presenter's computer.....	113
16.2.2 Viewing the presenter's computer	114
16.2.3 Whiteboard settings	120
17. Touchscreen	121
17.1 Touchscreen terminology	121
17.2 Touchscreen gestures	122
17.3 SuperNova Touch Bar	123
17.4 Typing on a touchscreen.....	124
17.5 Adjust touch sensitivity.....	124
18. Hot key conflicts	125
18.1 Turn off SuperNova hot keys	125
18.2 Tell SuperNova to ignore the next key press	125
18.3 Reassign a SuperNova hot key	126
19. Hot Keys	129
19.1 Actions.....	129
19.2 Speech	130
19.3 Speak Keys.....	131
19.4 Read From Here	132
19.5 Magnifier	132
19.6 Magnifier Window Adjustment.....	137
19.7 Dolphin Cursor (General)	140
19.8 Dolphin Cursor (Movement).....	140
19.9 Line View	141
19.10 Item Finder.....	143
19.11 Quick Navigation Keys for Microsoft Word.....	144
19.11.1 Quick Navigation Keys	144
20. Reference	147
20.1 New Situation Settings dialog box.....	147
20.2 New Application Settings dialog box.....	147
20.3 New Map dialog box.....	148
20.4 New Script menu item.....	149
20.5 Edit Situation Settings dialog box	149
20.6 Edit Application Settings dialog box	150
20.7 Edit Map dialog box	150
20.8 Edit Script menu item	151
20.9 Visual Configure Custom Colour Scheme dialog box.....	151
20.9.1 Classic custom colour scheme options.	152

20.9.2 Tint, Dual Tint, Treble Tint and Quad Tint custom colour options:	153
20.9.3 Colour Replacement custom colour scheme options: .	154
20.10 Visual Highlighting Options dialog box	155
20.11 Visual Mouse Pointers dialog box	158
20.12 Visual Doc Reader Settings dialog box	160
20.13 Visual Connect and View Settings dialog box	162
20.14 Visual Multiple Monitors dialog box	165
20.15 Visual Advanced Options dialog box.....	168
20.16 Speech Voice Preferences dialog box	171
20.17 Speech Character Echo dialog box	176
20.18 Speech Text Style Announcements dialog box	176
20.19 Speech General Announcements dialog box.....	178
20.20 Speech Advanced Options dialog box	179
20.21 Media Scan and Read Settings dialog box.....	180
20.22 General Startup Preferences dialog box	181
20.23 General Update Settings dialog box	183
20.24 General Control Panel dialog box	183
20.24.1 Control Panel Theme	185
20.25 General Keyboard dialog box.....	185
20.26 General Hot Keys dialog box.....	186
20.27 General Touchscreen Settings dialog box	186
20.28 General Advanced Options dialog box.....	189
20.29 Item Finder dialog box	190

CHAPTER 1

How to find help

1.1 Use the quick reference booklet

A quick reference booklet is included in the box containing your SuperNova software. This book contains information on getting started with SuperNova, covering the popular hot keys you use with this software.

1.2 Get help using an application

SuperNova includes help on how to use many popular applications.

Help includes:

- How to configure the application for best performance.
- How to complete many common tasks using only the keyboard.
- A list of popular hot keys.

While SuperNova is running, you can open the SuperNova Help from within your application. When you open the SuperNova Help menu, the first item will link to specific information about using SuperNova with the current application.

To do this:

1. Press CAPS LOCK + F1.

A context menu opens.

2. DOWN ARROW to select the name of your application. For example, Microsoft Word 2007 and then press ENTER.

SuperNova opens an HTML Help window, which contains the help content.

When you wish to return to your application, you can press ALT + F4 to close the Help window.

1.2.1 Move within help topics

You can use Arrow Keys to move around within topics. In addition, you can use the following web page navigation commands to move around within help topics. Visit the Internet Explorer section of the SuperNova manual For a complete list of hot keys for moving around web pages.

- Move to the next link, TAB.
- Move to the previous link, SHIFT + TAB.
- Move to the bottom of the current document, CONTROL + END.
- Move to the top of the current document, CONTROL + HOME.
- Read from Here to the END of the document, press the Read From Here hot key.

Read From Here

Function	Desktop Hot Keys	Laptop Hot Keys
Start Read From Here	NUMPAD PLUS	F11
Start Read From Here from the mouse pointer position	MIDDLE MOUSE BUTTON	MIDDLE MOUSE BUTTON
Stop Read From Here	ESCAPE	ESCAPE

When you wish to return to your application, you can press ALT + F4 to close the Help window.

1.2.2 Move between Help topics

You can use the links at the top of each topic to go to the next or previous topic.

To do this:

1. Press CONTROL + HOME to move to the top of the document.
2. Press TAB to move by link until you hear "Previous Topic Link" or "Next Topic Link". You can press SHIFT + TAB to move back to any links you may have skipped.
3. Follow the link you have chosen by pressing ENTER.

You can use the "Home" link to move to a page containing links to all topics relating to the current application.

When you wish to return to your application, you can press ALT + F4 to close the Help window.

1.2.3 Switch between Help and your application

You can remember your place in the SuperNova Help by keeping the SuperNova Help Browser window open. You may find it useful to switch between the SuperNova Help Browser window and your application window several times while carrying out help instructions.

To do this:

1. From the SuperNova Help window, press ALT + TAB to switch back to your application.
2. Carry out any actions in your application.
3. Press ALT + TAB to return to your position in the Help window.

When you have finished using SuperNova help, you can press ALT + F4 to close the Help window.

1.2.4 Add personal notes

You can add personal notes in the SuperNova Help. You might do this to keep a note of certain hot keys or steps you need to follow to complete a task in an application.

To do this:

1. Run your application.
2. Press CAPS LOCK + F1.

The SuperNova Help menu opens.

3. DOWN ARROW to “My Notes” and press ENTER.

A blank document in NotePad or equivalent text editor opens.

4. Add your text to the file.
5. Save and close the file.

You can review and add to your notes by selecting the “My Notes” item in the SuperNova Help menu. The text files you create are saved in your \Settings folder.

1.3 Get Help from the SuperNova Control Panel

Your SuperNova Control Panel provides two ways of getting help.

- The Help button.
- The Help menu.

1.3.1 Use the Help Button

The Help button in the SuperNova Control Panel is context sensitive. When you press this button, SuperNova opens the relevant section of the manual containing an explanation of the SuperNova settings in view.

If the SuperNova Control Panel is not open, you can open it using LEFT CONTROL + SPACEBAR.

You can press the Help button in any of these ways:

- Left clicking the "Help" button on the Control Panel with the mouse.
- TAB to the "Help" button and press SPACEBAR.
- Press F1.

1.3.2 Explore the Help menu

The Help menu provides access to the complete SuperNova manual. The complete manual is particularly useful when you need to lookup a particular piece of information.

1. If the SuperNova control panel is not open, you can open it using LEFT CONTROL + SPACEBAR.
2. When in the SuperNova control panel, press ALT + H to open the "Help" menu. The first item in the menu is "SuperNova Manual".
3. Press ENTER to open the SuperNova manual.

Use the following keys to navigate the SuperNova manual:

- Choose a section, UP and DOWN ARROW Keys.
- Expand and collapse individual sections, RIGHT and LEFT ARROW Keys.

- Open a topic, ENTER.
- Move between the contents and the open topic, F6.

1.4 Get support for SuperNova

1.4.1 Find help on the Dolphin website

The Dolphin website offers a comprehensive range of support materials to help you get the most out of your Dolphin product. A variety of documentation is available, from handy tips and tutorials, to more technical knowledge base articles offering solutions to less common problems.

To do this:

1. Open a web browser and visit <http://www.YourDolphin.com>.
2. Choose the "Support" link from the main navigation menu.
3. Choose one of the options available to you:
 - Manuals and user guides. Dolphin's training Manuals and Quick Start Guides will help you get to grips with our products quickly and easily.
 - Tips & Tutorials. Handy step by step online tutorials covering the main product features.
 - Knowledge Base. The Knowledge Base is a searchable database containing a wealth of information and solutions to issues you might have with your Dolphin product.

1.4.2 Contact your Dolphin Dealer for support

If you purchased your Dolphin software from a registered Dolphin dealer, you can contact the dealer directly to receive the most appropriate localised support. If you do not know the contact details for your dealer, you can obtain these from the Dolphin website.

To do this:

1. Open a web browser and visit <http://www.YourDolphin.com>.
2. Choose the "Dealers" link from the main navigation menu. This will open the "Dealer Locator" page.
3. Select your country from the list then choose the "Submit" button. This will open a page displaying a list of Dolphin Dealers for that country.
4. Review the results to locate the contact details for the dealer from which you purchased your Dolphin product.

1.4.3 Contact Dolphin UK Product Support

At Dolphin we pride ourselves in the quality and level of Product Support we provide to all our customers. Our goal is to continue to provide Product Support that is second to none. You can contact our Product Support team in a number of ways.

To do this:

- By telephone: +44 (0)1905 754765.
- By telephone (UK Local Rate): 0345 130 5454.
- By Fax: +44 (0) 1905 754 559.
- By Email: support@yourdolphin.com.

1.4.4 Contact Dolphin USA Product Support

At Dolphin we pride ourselves in the quality and level of Product Support we provide to all our customers. Our goal is to continue to provide Product Support that is second to none. You can contact our Product Support team in a number of ways.

To do this:

- By telephone (Toll free): 888 519 4694
- By telephone (International): +1 609 803 2173.
- By Email: support@dolphinusa.com.

1.4.5 Find your product version number and your product serial number

In the SuperNova "About" dialog box you can find information about:

- Your SuperNova version number.
- Your personal SuperNova serial number.
- A copy of the SuperNova software license agreement.

To open this dialog box:

1. Press LEFT CONTROL + SPACEBAR. This will open the SuperNova control panel.
2. Press ALT + H. This will open the "Help" menu.
3. DOWN ARROW to "About" and press ENTER. This will open the "About" dialog box.

1.4.6 Get further product training

Dolphin has a network of approved trainers who are available to offer you high quality training either within your home or in your place of work. Our trainers can personalise the training to your individual requirements allowing you to maximise your independence, whilst taking into account your level of technical knowledge. You can contact Dolphin to find a Dolphin approved trainer in your area.

To do this:

- By telephone: +44 (0)1905 754577.
- By Email: info@dolphinuk.co.uk.

CHAPTER 2

Install and Set Up

2.1 Start SuperNova

SuperNova will start automatically after you log onto your computer unless you have stated otherwise during the installation process.

You can manually start SuperNova after log on by using the SuperNova shortcut key.

Press CONTROL + SHIFT + S.

If you have installed a new version alongside your existing version then the new version will be automatically given the following shortcut key:

Press CONTROL + SHIFT + D.

You can also launch SuperNova by selecting the SuperNova shortcut in the Windows Start menu. This is in the Programs, Dolphin sub-menu.

2.2 Run SuperNova for the first time

You will be guided through the setup process the first time you run SuperNova after installation.

The setup process will guide you through:

- Unlocking and activating.
- Changes to the SuperNova defaults settings.
- Customer feedback options.

- Checking for the latest SuperNova product updates.

You can choose to go through all the steps, skip some or cancel the setup process. You can run each step in the setup process at a later date from the "Help" menu in the SuperNova control panel.

2.3 Quit SuperNova

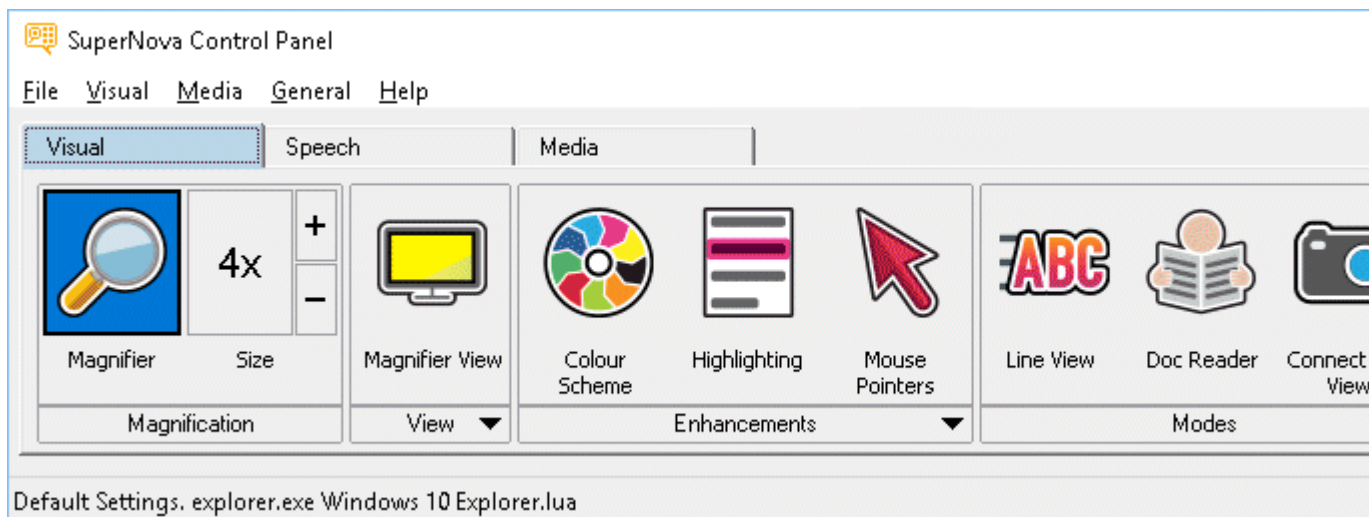
To quit SuperNova:

1. Press LEFT CONTROL + SPACEBAR. This will open the SuperNova control panel.
2. Press ALT + F. This will open the "File" menu.
3. DOWN ARROW to "Quit SuperNova" and press ENTER. A message window will appear asking you to confirm you want to quit.
4. TAB to the "Yes" button and press SPACEBAR.

CHAPTER 3

SuperNova Control Panel

3.1 Introducing the SuperNova Control Panel



The SuperNova Control Panel is the place that contains all of the settings for SuperNova.

You can find the SuperNova settings in the Control Panel's menu bar and the button bar.

The menu bar, which is the horizontal bar positioned below the title bar containing options to drop down menus, provides access to all the settings available in SuperNova. The button bar, which is positioned below the menu bar and contains large easy to access buttons, provides access to SuperNova's most commonly used settings.

The final part of the SuperNova Control Panel is the status bar. The status bar, which is the horizontal bar at the bottom of the SuperNova Control Panel, provides information about the Settings files you are using.

You can open the SuperNova Control Panel in several ways. Use the one which suits you best.

To open the SuperNova main Control Panel:

Press LEFT CONTROL + SPACEBAR.

This opens the full Control Panel as a dialog box.

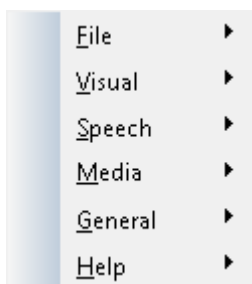
Alternatively, using the mouse, to open the SuperNova Control

Panel:

Click the SuperNova icon in the Windows Notification Area.

To open the SuperNova Control Panel as a simple menu:

Press CAPS LOCK + SPACEBAR or RIGHT CLICK the SuperNova icon in the Windows Notification Area.



3.2 Keyboard commands to get around the SuperNova Control Panel

The following tables provide a list of keyboard commands to help you get around the SuperNova Control Panel. Note that these keyboard commands are also standard Windows commands that you can use throughout Windows.

Keyboard Commands for the menu bar.

Function	Hot key
Move focus to the menu bar	ALT
Move focus across the menu bar	LEFT ARROW or RIGHT ARROW
Open the menu item that has focus	DOWN ARROW or ENTER
Move to and open a menu bar item	ALT + Underlined letter
Move through an open menu	DOWN ARROW or UP ARROW
Open a submenu	RIGHT ARROW or ENTER
Close a submenu	LEFT ARROW or ESCAPE
Select a menu item	ENTER

Keyboard Commands for dialog boxes

Function	Hot key
Move to the next control	TAB
Move to the previous control	SHIFT + TAB
Press a button, toggle a check box or select an option	SPACEBAR
Move directly to a control	ALT + Underlined letter
Open the next tab in a multi tab dialog box	CONTROL + TAB
Open the previous tab in a multi tab dialog box	CONTROL + SHIFT + TAB
Cancel	ESCAPE

3.3 Settings in the SuperNova Control Panel

All the SuperNova options can be accessed through the menus in the SuperNova Control Panel. The following list summarises the purpose of the menus.

- File menu:

The "File" menu contains options for selecting your user profile as well as managing your SuperNova Settings files. This includes creating, editing, importing and exporting settings files. The "File" menu also contains the command to quit SuperNova.

- Visual menu.

The "Visual" menu contains the options to control magnification, screen colours, highlighting and other visual effects. You can also access many of these settings through the SuperNova button bar.

- Speech menu.

The "Speech" menu contains the options to control what SuperNova announces. This includes voice settings like the speed and volume of the voice, plus options controlling what SuperNova says when you are typing, reading and working with text.

- Media menu.

The "Media" menu contains options for scanning, searching for books, reading online news articles, listening to radio stations and playing podcasts.

- General menu.

The "General" menu contains options that control SuperNova's behaviour including startup preferences, update settings, Control Panel appearance and SuperNova keyboard and hot key assignments.

- Help menu.

The "Help" menu provides shortcuts to useful resources including the SuperNova Manual, online resources and the "About" option. The "About" option provides you with your customer ID number plus the edition, version and build of SuperNova you are currently running. Ensure you have this information at hand if you require technical assistance.

3.4 Change the appearance of the SuperNova Control Panel

You can make many changes to the SuperNova Control Panel. For example, you can hide the button bar, hide the status bar, stop the Control Panel appearing when you run SuperNova and remove it from the Windows Taskbar.

For information about changing the SuperNova Control Panel, see the "General Control Panel dialog box".

3.5 Close the SuperNova control panel

You can close the SuperNova Control Panel in several ways.

To do this:

Press ESCAPE.

Or,

Click the minimise icon in the SuperNova Control Panel title bar.

When you do this, the SuperNova Control Panel disappears and the focus goes back to the application you were previously running. SuperNova continues to run.

NOTE: If you press ALT + F4 or click the close button in the SuperNova Control Panel title bar, then SuperNova will assume you want to quit the program. Before quitting, a message window appears asking you to confirm the action.

CHAPTER 4

Magnifier

4.1 Turn magnification on or off

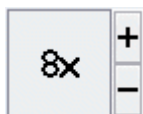


You can turn on or off magnification using the "Visual" options in the SuperNova control panel or by using hot keys. If you are using a touchscreen device, you can also turn magnification on or off by doing a 3 finger double tap.

Magnifier Hot Keys

Function	Desktop - Default NumPad Set	Laptop - Universal Set
Turn off or on magnification	LEFT CONTROL + NUMPAD ENTER	ALT + 0

4.2 Change magnification size



You can change the power of magnification from 1.2x to 64x. You can change the magnification size using the "Visual" options in the SuperNova control panel or by using hot keys. If you are using a touchscreen device,

you can also change magnification by doing a 2 finger pinch or 2 finger stretch.

Magnifier Hot Keys

Function	Desktop Hot Keys	Laptop - Universal Set
Increase magnification	LEFT CONTROL + NUMPAD PLUS or CAPS LOCK + MOUSE WHEEL UP	ALT + EQUALS or CAPS LOCK + MOUSE WHEEL UP
Reduce magnification	LEFT CONTROL + NUMPAD MINUS or CAPS LOCK + MOUSE WHEEL DOWN	ALT + DASH or CAPS LOCK + MOUSE WHEEL DOWN

4.3 Change Magnifier view



You can choose different ways to view the screen using the SuperNova Magnifier. This includes the following viewing options:

- **Full Screen.**
This view fills the screen with a magnified portion of the "real" Windows screen.
- **Fixed Window.**
This view shows the magnified region of the screen in a small static window. You can change the size and position of the window.
- **Magnifying Glass**
This view behaves like holding a magnifying glass to the screen. You view the magnified region of the screen in a small moving window. You can change the size and position of the window.
- **Resizing Glass**
This view behaves similar to the Magnifying Glass except that the magnified window will automatically resize itself to the size of the current focus. This view is useful if you use the keyboard to navigate Windows and feel more comfortable seeing the unmagnified screen in the background.
- **Split Screen.**
This view splits the screen into two regions: a magnified window and an unmagnified window. You can choose where the magnified window appears and the size of the magnified window. The border between the magnified and unmagnified screen is shown as a black line. This mode is popular when also using an integrated CCTV package.

You can change your viewing style by using the "Visual" options in the SuperNova control panel or by using hot keys.

Magnifier Hot Keys

Function	Desktop - Default NumPad Set	Laptop - Universal Set
Change Magnifier view	LEFT CONTROL + NUMPAD 7	ALT + SHIFT + M

Change orientation when in Split Screen view	LEFT CONTROL + NUMPAD 1	No Assignment
--	-------------------------------	---------------

Note that you can change the size and colour of the border around the Fixed Window, Magnifying Glass, Resizing Glass and Split Screen views. You make this change in the "Visual Advanced Options" dialog box.

4.4 Change size and position of the magnified window

You can change the size and position of the Fixed Window, Magnifying Glass and Split Screen window. You make the change using a magnification modification mode.

To adjust the size and position of the Fixed Window view:

1. Choose "Fixed Window" as the Magnifier View setting.
2. If using the Desktop Hot Key set, press LEFT CONTROL + NUMPAD 4 to enter magnification modification mode. If using the Laptop Hot Key set, press RIGHT CONTROL + F3 to enter magnification modification mode.

In magnification modification mode, a flashing border indicates the object you are editing.

3. Use the Arrow Keys to position the window on the screen. You can also do this by holding down the Z key and move the mouse.
4. Press LEFT CONTROL + Arrow Keys to adjust the size of the window. You can also do this by holding down the X key and move the mouse.
5. Press ESCAPE to exit magnification modification mode.

To adjust the size of the Magnifying Glass view:

1. Choose "Magnifying Glass" as the Magnifier View setting.

2. If using the Desktop Hot Key set, press LEFT CONTROL + NUMPAD 4 to enter magnification modification mode. If using the Laptop Hot Key set, press RIGHT CONTROL + F3 to enter magnification modification mode.

In magnification modification mode, a flashing border indicates the object you are editing.

3. Press LEFT CONTROL + Arrow Keys to adjust the size of the window. You can also do this by holding down the X key and move the mouse.
4. Press ESCAPE to exit magnification modification mode.

To adjust the size of the Split Screen view:

1. Choose the Split Screen orientation that you are going to use as the Magnifier View setting.
2. If using the Desktop Hot Key set, press LEFT CONTROL + NUMPAD 4 to enter magnification modification mode. If using the Laptop Hot Key set, press RIGHT CONTROL + F3 to enter magnification modification mode.

In magnification modification mode, a flashing border indicates the object you are editing.

3. Press LEFT CONTROL + Arrow Keys to adjust the size of the window. You can also do this by holding down the Z key and move the mouse.
4. Press ESCAPE to exit magnification modification mode.

4.5 View other parts of the screen

Only one part of the screen is visible when using magnification. To view the other parts of the screen, you can move the mouse pointer around the screen or use SuperNova hot keys.

Moving around the screen using SuperNova hot keys is described as either panning, moving, move to or jumping.

- Panning.

Panning moves the magnified area across the screen at a constant speed in the direction you specify. The speed of movement can be increased or slowed depending on the keys pressed.

To pan across the screen press RIGHT CONTROL plus an Arrow Key. Hold down RIGHT CONTROL to keep panning. Press the same Arrow Key repeatedly (keeping RIGHT CONTROL pressed) to speed up the panning. Press the opposite Arrow Key to slow down.

Use the other Arrow Keys to change direction. Release RIGHT CONTROL to stop panning.

- Moving (accelerated panning).

Moving works in a similar way to panning, except that the speed of the panning will automatically accelerate up to a certain top speed whilst you have the keys held down.

To move the magnified area press and hold down RIGHT CONTROL + RIGHT SHIFT together with an Arrow Key. When you let go, moving will stop.

- Move To.

You can also move the magnified area directly to various parts of the screen. The following table lists the hot keys that will allow you to move the magnified area to a screen position.

Magnifier Hot Keys

Function	Desktop - Default NumPad Set	Laptop - Universal Set
Top left	RIGHT CONTROL + NUMPAD 7	No Assignment
Top	RIGHT CONTROL + NUMPAD 8	No Assignment
Top right	RIGHT CONTROL + NUMPAD 9	No Assignment
Left	RIGHT CONTROL + NUMPAD 4	No Assignment
Centre	RIGHT CONTROL + NUMPAD 5	No Assignment
Right	RIGHT CONTROL + NUMPAD 6	No Assignment
Bottom left	RIGHT CONTROL + NUMPAD 1	No Assignment
Bottom	RIGHT CONTROL + NUMPAD 2	No Assignment
Bottom right	RIGHT CONTROL + NUMPAD 3	No Assignment

- Jump Movement.

Movement around the screen is also possible in steps. This is different to panning as the magnified window does not scroll smoothly but rather moves in steps.

Magnifier Hot Keys

Function	Desktop - Default NumPad Set	Laptop - Universal Set
Up	LEFT CONTROL + CAPS LOCK + NUMPAD 8	RIGHT CONTROL + RIGHT SHIFT + UP ARROW
Down	LEFT CONTROL + CAPS LOCK + NUMPAD 2	RIGHT CONTROL + RIGHT SHIFT + DOWN ARROW
Left	LEFT CONTROL + CAPS LOCK + NUMPAD 4	RIGHT CONTROL + RIGHT SHIFT + LEFT ARROW
Right	LEFT CONTROL + CAPS LOCK + NUMPAD 6	RIGHT CONTROL + RIGHT SHIFT + RIGHT ARROW

Save and Restore Screen Position

Also available is the opportunity to save a screen position. This will then allow you to return to the same position with the press of a hot key.

To save a screen position:

1. Move the magnified window to the required position.

2. Press RIGHT CONTROL + NUMPAD 0 to save the position.

To move the magnified window back to the saved position:

Press RIGHT CONTROL + NUMPAD PERIOD to return to the saved screen position.

4.6 Get an overview of the magnified window position

You can see the position the magnified window is on the screen by using Magnifier Overview. You switch in and out of Magnifier Overview using a SuperNova hot key.

To enter and exit Magnifier Overview:

Press LEFT CONTROL+ BACKSLASH.

4.7 Create static magnified windows to display information

You can create static magnified windows to keep a particular area of the screen permanently displayed. This lets you see important information that may frequently change as you use your application.

SuperNova calls these windows "Hooked Areas". Hooked Areas can have their own magnification size and will be visible even if you turn off the SuperNova Magnifier.

Examples:

- You can hook the system tray clock to make it easy to see the time.
- You can hook the place on a word processor's status bar that reports the current page number to make it easy to see what page you are currently working on.
- You can hook the Formula Bar in a spreadsheet to make it easy to see if the current cell contains a formula or text.

You can create a Hooked Area by using the mouse pointer or by using the keyboard.

4.7.1 Create a Hooked Area using the keyboard

To create and change the position and size of a Hooked Area window using hot keys requires the use of magnification modification mode.

To create and adjust the size and position of a Hooked Area:

1. If using the Desktop Hot Key set, press **LEFT CONTROL + NUMPAD 5** to create a new Hooked Area and automatically enter magnification modification mode. If using the Laptop Hot Key set, press **LEFT CONTROL + LEFT SHIFT + ALT + H** to create a new Hooked Area and automatically enter Magnification Modification Mode

In magnification modification mode, a flashing border indicates the object you are editing.

2. Use the Magnifier hot keys to change the size of the content inside the Hooked Area.
3. Use the Arrow Keys to position the window on the screen. You can also do this by holding down the Z key and move the mouse.
4. Press **LEFT SHIFT + Arrow Keys** to alter the content inside the Hooked Area. You can also do this by holding down the C key and move the mouse.
5. Press **LEFT CONTROL + Arrow Keys** to adjust the size of the window. You can also do this by holding down the X key and move the mouse.
6. Press **ESCAPE** to exit magnification modification mode.

During the creation process you will probably find it is only through repeated adjustment of size, position and content within the Hooked Area do you get the desired result.

4.7.2 Modify a Hooked Area using the keyboard

To modify an existing hooked area:

1. If using the Desktop Hot Key set, press LEFT CONTROL + NUMPAD 6. If using the Laptop Hot Key set, press LEFT CONTROL + F6. This will enter magnification modification mode with the currently selected Hooked Area identified by a flashing border.
2. If you have multiple Hooked Areas then you can cycle between the Hooked Areas by pressing LEFT CONTROL + NUMPAD 6 if using the Desktop Hot Key set. Press LEFT CONTROL + F6 if using the Laptop Hot Key set.
3. Use the available Magnifier hot keys and Magnification Modification Mode hot keys to adjust the size, location or content of the Hooked Area.
4. Press ESCAPE to exit Magnification Modification Mode.

4.7.3 Delete a Hooked Area using the keyboard

To delete an existing hooked area:

1. If using the Desktop Hot Key set, press LEFT CONTROL + NUMPAD 6. If using the Laptop Hot Key set, press LEFT CONTROL + F6. This will enter Magnification Modification Mode with the currently selected Hooked Area identified by a flashing border.
2. If you have multiple Hooked Areas then you can cycle between the areas. To do this press LEFT CONTROL + NUMPAD 6 if using the Desktop Hot Key set. Press LEFT CONTROL + F6 if using the Laptop Hot Key set.
3. Press DELETE to remove the Hooked Area.

When the Hooked Area is deleted the focus will move to the next Hooked Area. If no Hooked Areas remain then Magnification Modification Mode will be automatically exited. If additional Hooked Areas remain that you do not want to modify then press ESCAPE.

4.7.4 Create a Hooked Area using the mouse

You can create Hooked Areas through the "Create Hooked Areas" dialog box. To open this dialog box, open the "Visual" menu and select the menu item "Advanced Options". Then in the "Hooked areas" property sheet of the Advanced Options dialog box press the "New" button.

In the "Create Hooked Areas" dialog box you will need to:

1. Provide a unique description for the hooked area.
2. Select or unselect the "Track focus" check box.

Track focus determines whether the content of the hooked area is fixed or shows the current focus. Select this check box and the contents of the hooked area will track the focus. If this check box is selected then the "Choose screen area to hook" button will be disabled as an area of the screen is not being defined.

3. Select the "Choose screen area to hook" button to define the screen area to display.
4. Use LEFT MOUSE BUTTON with mouse movement to create a new area. Press ENTER or the RIGHT MOUSE BUTTON to accept, ESCAPE to cancel.
5. Select or unselect the "Smoothing" check box.
6. Select the "Move the hook window" button to position the hooked area and to set the magnification size.

The magnification size can be set using the normal hot keys. Use mouse movement or the CURSOR KEYS to move the hook. Press ENTER or the LEFT MOUSE BUTTON to accept, ESCAPE to cancel.

7. Select the "OK" button to confirm and save the new Hooked Area.

You can view a list of your created Hooked Areas in the "Hooked Areas" tab, in the "Visual Advanced Options" dialog box. You can also sort, modify and delete existing Hooked Areas in the "Hooked Areas" tab.

4.7.5 Show or hide Hooked Areas

You can show or hide Hooked Areas using a SuperNova hot key. This can be useful if you do not want the Hooked Areas to be visible all the time but rather as and when information from other areas of the screen is required.

Magnifier Hot Keys

Function	Desktop - Default NumPad Set	Laptop - Universal Set
Turn off or on Hooked Areas	LEFT CONTROL + NUMPAD 3	LEFT CONTROL + F5

CHAPTER 5

Screen enhancements

If you find it difficult to view the screen, track the focus or follow the mouse pointer then the visual enhancements available in SuperNova may provide you with a solution.

5.1 Make the screen easier to see



SuperNova contains options to make viewing the screen more comfortable. One of these options is SuperNova Colour Schemes, which can change the contrast, brightness and colours on the screen.

You can choose a pre-set SuperNova Colour Scheme or create a custom scheme. A Colour Scheme is applied to the whole screen and will work even when the Magnifier is turned off.

You can choose a Colour Scheme through the "Visual" options in the SuperNova control panel. You can also toggle off or on a Colour Scheme using the "Visual" options in the SuperNova control panel or by using hot keys.

Magnifier Hot Keys

Function	Desktop - Default NumPad Set	Laptop - Universal Set
Turn on or off your Colour Scheme	LEFT CONTROL + NUMPAD 0	ALT + SHIFT + C

To create a custom scheme you must select "Custom" before you can choose "Configure..." from the list of Colour Schemes. Choosing "Configure..." opens the "Configure Custom Colour Scheme" dialog box. The dialog box contains different controls depending on the settings you choose. This includes brightness, contrast, tint and colour replacement settings.

5.2 Make the focus easier to see



SuperNova contains options to make viewing the screen more comfortable. One of these options is SuperNova Highlighting, which makes different types of focus easier to see by attaching a visual marker to the focus.

Types of focus include:

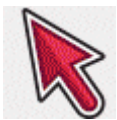
- Mouse (the pointer controlled by the mouse).
- Cursor (the beam cursor used in edit areas).
- Line (the line the beam cursor is positioned).
- Focus (the focus in dialog boxes and menus).

You can choose a pre-set SuperNova Highlighting Scheme or create your own personal custom scheme. You choose a scheme through the "Visual" options in the SuperNova control panel.

To create a custom scheme you must select "Settings". from the list of Highlighting Schemes. When you choose "Settings" SuperNova automatically switches to the "Custom" scheme before opening the Highlighting Options dialog box. SuperNova also uses the previous scheme's values to make the default values for the new custom scheme.

Tip: If you see no visual effect when choosing a scheme then check to ensure "Highlighting" is turned on. You can turn Highlighting on by selecting the "Highlighting" option in the "Visual" menu or by selecting the "Highlighting" button in the "Visual" tab of the SuperNova control panel.

5.3 Make the pointer easier to see



SuperNova contains options to make viewing the screen more comfortable. One of these options is SuperNova Mouse Pointers, which allows you to change the size and colour of the pointer on the screen.

You can choose a pre-set SuperNova Mouse Pointer scheme or create your own personal custom scheme through the "Visual" options in the SuperNova control panel.

The pre-set schemes include:

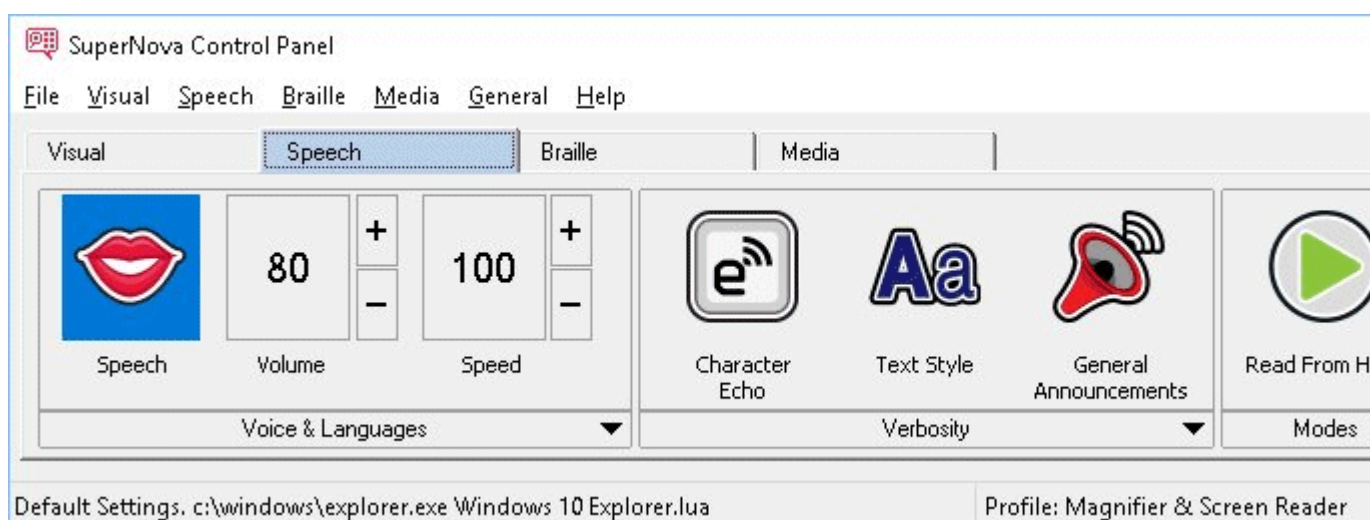
- Large Red
- Large White
- Large Yellow

The selecting of the "Windows Standard" scheme will change the pointer scheme back to the Windows defaults.

CHAPTER 6

Voice settings

6.1 Turn the voice off or on



You can turn off or on the voice using the "Speech" options in the SuperNova control panel or by using hot keys.

To turn off the voice until you turn on the voice again:

Speech Hot Keys

Function	Desktop - Default NumPad Set	Laptop - Universal Set
Turn voice on and off	LEFT CONTROL + 0	LEFT CONTROL + ALT + 0
Mute voice	LEFT CONTROL	CONTROL

6.2 Change volume

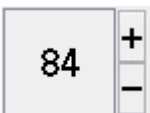


You can change the volume of the voice using the "Speech" options in the SuperNova control panel or by using hot keys.

Speech Hot Keys

Function	Desktop - Default NumPad Set	Laptop - Universal Set
Increase volume	LEFT CONTROL + EQUALS	LEFT CONTROL + ALT + EQUALS
Decrease volume	LEFT CONTROL + MINUS	LEFT CONTROL + ALT + MINUS

6.3 Change reading speed



You can change the reading speed of the voice using the "Speech" options in the SuperNova control panel or by using hot keys.

Speech Hot Keys

Function	Desktop - Default NumPad Set	Laptop - Universal Set
Increase reading speed	LEFT CONTROL + LEFT SHIFT + EQUALS	LEFT CONTROL + ALT + PAGE UP
Reduce reading speed	LEFT CONTROL + LEFT SHIFT + MINUS	LEFT CONTROL + ALT + PAGE DOWN

6.4 Change voice



Speech synthesisers often come with different voices to choose from. Each voice will have its own intonation, created within the speech parameters available.

To change voice:

1. Press LEFT CONTROL + SPACEBAR.

The SuperNova control panel opens.

2. Press ALT + S.

The "Speech" menu opens.

3. DOWN ARROW to "Voice Preferences" and press ENTER.

The "Voice Preferences" dialog box opens.

4. CONTROL + TAB until you open the "Voice and Language Configuration" page.
5. TAB to the "Voice" list and use the Arrow Keys to select a voice.
6. If you want to have different voices for different speech contexts, TAB to the "Same as Screen Reader" check box and press SPACEBAR to deselect this option. Then, TAB to each category and use the Arrow Keys to select a voice.

Note: A speech context is a special attribute of the text to be spoken which indicates where it came from or what SuperNova feature you are using.

7. TAB to the "OK" button and press SPACEBAR.

SuperNova saves the changes and closes the dialog box.

If you are unable to find a voice you find comfortable to listen to then try another synthesiser or try creating your own voice using the options in the "User Defined Voices" page in the "Voice Preferences" dialog box.

6.5 Change reading voice language



SuperNova can automatically change the synthesiser language to match particular alphabetic scripts to make screen reading a more fluent experience. You can automatically switch between many scripts including Latin, Arabic, Chinese (Mandarin), Greek, Hebrew, Hindi (Devanagari) and Russian (Cyrillic).

Where SuperNova is unable to determine the script language, for instance, where the same alphabet is used by different languages, you can use a hot key to select the synthesiser language you want to use to read the passage of text.

Note that not all synthesisers support this feature. To learn more about supported synthesisers and available synthesiser languages please contact Dolphin or your local Dolphin dealer.

6.5.1 Enable automatic language switching

1. Press LEFT CONTROL + SPACEBAR.

The SuperNova control panel opens.

2. Press ALT + S.

The "Speech" menu opens.

3. DOWN ARROW to "Voice Preferences" and press ENTER.

The "Voice Preferences" dialog box opens.

4. CONTROL + TAB until you open the "Voice & Language" page.
5. TAB to the "Enable automatic language switching" check box and press SPACEBAR to select this option.
6. If you want to prevent the speech changing when punctuation and numbers are encountered through passages of text, TAB to the "Speak numbers & punctuation with previous character's language" check box and press SPACEBAR to select this option.
7. TAB to the "OK" button and press SPACEBAR.

SuperNova saves the changes and closes the dialog box.

If you are using a non-European version of SuperNova and require text to be automatically read using a European language, then, in addition to the steps above, in the "Voice & Language" page, de-select the "Same as screen reader" check box and select the European language you want to use from the "Screen language" list.

You can also change the "Screen language" option by using the Language Up or Language Down hot key. This allows you to change synthesiser language without the need to leave the document you are reading.

Speech Hot Keys

Function	Desktop - Default NumPad Set	Laptop - Universal Set
Language Down	LEFT CONTROL + FULL STOP	No Assignment
Language Up	LEFT CONTROL + COMMA	No Assignment

6.6 Change speech synthesiser

SuperNova works with many different speech synthesisers. Supporting such a variety of speech synthesisers means you can pick a synthesiser and voice that you find comfortable, clear and responsive to use. To see what speech synthesisers are available please visit the Dolphin website or contact your local Dolphin Dealer.

To change to another speech synthesiser:

1. Press LEFT CONTROL + SPACEBAR.

The SuperNova control panel opens.

2. Press ALT + S.

The "Speech" menu opens.

3. DOWN ARROW to "Voice Preferences" and press ENTER.

The "Voice Preferences" dialog box opens.

4. CONTROL + TAB until you open the "Synthesiser Configuration" page.
5. TAB to the "Select Synthesiser" button and press SPACEBAR.

The "Select Synthesiser" dialog box opens.

6. Use the Arrow Keys to select an alternative speech synthesiser.
7. TAB to the "OK" button and press SPACEBAR.

SuperNova closes the dialog box and speaks using the new synthesiser.

If you find the voice not to your liking then you can move into the "Voice and Language Configuration" page to choose a different voice. You could also move to the "User defined voices" page to customise the parameters of the existing voice.

8. TAB to the "OK" button and press SPACEBAR.

SuperNova closes the "Voice Preferences" dialog box.

CHAPTER 7

Reading and typing

7.1 Read character

Speak Key

Function	Desktop - Default NumPad Set	Laptop - Universal Set
Read character at the current focus position	NUMPAD 4	CAPS + LEFT ARROW

7.2 Read word

Speak Key

Function	Desktop - Default NumPad Set	Laptop - Universal Set
Read word at the current focus position	NUMPAD 5	CAPS LOCK + RIGHT ARROW

You can learn more about the current word by repeating the press of the hot key.

- x2 spells the word.

- x3 spells the word using the phonetic alphabet.

7.3 Read line

You can read the current line at the focus position.

Speak Key

Function	Desktop Hot Keys	Laptop Hot Keys
Read line	NUMPAD 6	F8

7.4 Read focus

Speak Key

Function	Desktop - Default NumPad Set	Laptop - Universal Set
Read current focus	NUMPAD 0	CAPS LOCK + UP ARROW

7.5 Read control

Speak Key

Function	Desktop - Default NumPad Set	Laptop - Universal Set
Read control	NUMPAD PERIOD	No Assignment

7.6 Read window

Speak Key

Function	Desktop - Default NumPad Set	Laptop - Universal Set
Read WINDOW	NUMPAD 9	CAPS LOCK + B

7.7 Read date and time

You can announce the current time and date with a SuperNova hot key. The time and date comes from your computer clock.

Speak Key

Function	Desktop - Default NumPad Set	Laptop - Universal Set
Read time and date	LEFT CONTROL + LEFT SHIFT + NUMPAD SLASH	CAPS LOCK + F12

7.8 Read continuously

Read From Here is a special reading mode available in SuperNova.

You can use Read From Here to continuously read a document. Reading will continue until the end of the document or until you press a hot key to

stop the reading. The pressing of a hot key to stop SuperNova reading will move the cursor to the last word spoken.

Read From Here

Function	Desktop - Default NumPad Set	Laptop - Universal Set
Start Read From Here	NUMPAD PLUS	CAPS LOCK + DOWN ARROW
Stop Read From Here	NUMPAD PLUS or ESCAPE or LEFT CONTROL	SPACEBAR or ESCAPE or CONTROL

7.8.1 Read From Here with the Dolphin Cursor

Read From Here is also available when using the Dolphin Cursor. This allows you to continuously read information that you may not otherwise be able to read including web pages, dialog boxes, lists and menus.

You can also turn on or turn off the Dolphin Cursor when you stop Read From Here. Turning on the Dolphin Cursor will place the Dolphin Cursor on the last word spoken. The application does not move focus to the new position.

Read From Here

Function	Desktop - Default NumPad Set	Laptop - Universal Set
Stop Read From Here and turn on or turn off the Dolphin Cursor	NUMPAD MINUS	SPACEBAR

7.8.2 Enhance Read From Here

Enhance Read From Here creates an alternative reading environment for you when you use the Read From Here command.

In this reading environment, a magnified window shows the current text being spoken as moving text without line breaks at the top of the screen. The rest of the screen is unmagnified, providing an opportunity to check the visual layout of the document as continuous reading progresses.

To turn on or off this option, you can either choose the "Enhance Read From Here" item in the "Speech" menu in the SuperNova control panel or you can use a SuperNova hot key.

Speech Hot Keys

Function	Desktop - Default NumPad Set	Laptop - Universal Set
Enhance Read From Here	LEFT CONTROL + CAPS LOCK + 1	No Assignment

Notes:

- This hot key does not start the continuous reading process. You continue to control continuous reading by using the Read From Here hot keys.
- Enhance Read From Here works only when using magnification. If the Magnifier is turned off this reading mode will not initialise. This is because the magnified window at the top of the screen is proportional to the magnification size you are using.

7.9 Read using the mouse

You can set SuperNova to start or stop continuous reading with a mouse click. You can also set SuperNova to read text under the mouse pointer.

7.9.1 Click and read

To start continuous reading from the mouse pointer position:

Press MIDDLE MOUSE BUTTON.

Repeating the button press will stop SuperNova reading.

7.9.2 Read text under the mouse pointer position

To read text under the mouse pointer position:

1. Press LEFT CONTROL + SPACEBAR. This will open the SuperNova control panel.
2. Press ALT + S. This will open the "Speech" menu.
3. DOWN ARROW to "General Announcements" and press ENTER. This will open the "General Announcements" dialog box.
4. TAB to the "Announce text under mouse" check box and press SPACEBAR to select this item.
5. TAB to the "OK" button and press SPACEBAR. This will confirm your changes and close the dialog box.
6. Press ESCAPE to close the SuperNova control panel.

Text below the mouse pointer position will now be read by SuperNova.

7.10 Change what is spoken when typing

You can have:

- Each character you type spoken.
- Each word you type spoken.
- Each character and word you type spoken.
- Nothing spoken when typing.

You can make this change through the SuperNova control panel.

To do this:

1. Press LEFT CONTROL + SPACEBAR. This will open the SuperNova control panel.
2. Press ALT + S. This will open the "Speech" menu.
3. DOWN ARROW to "Character Echo" and press ENTER. This will open the "Character Echo" dialog box.
4. Select what you want spoken when typing from the options available.
5. TAB to the "OK" button and press SPACEBAR. This will confirm your changes and close the dialog box.

You can also change the Character Echo value using a SuperNova hot key.

Speech hot key

Function	Desktop - Default NumPad Set	Laptop - Universal Set
Character echo cycle	CAPS LOCK + SEMI COLON	CAPS LOCK + 2

7.11 Announce capital letters

You can announce capital letters by changing settings in the SuperNova control panel. Note that the SuperNova settings will vary depending on the synthesiser you are using.

7.11.1 Turn on capital announcement

You can turn on capital announcement by selecting the "Capitals" check box in the "Text Style Announcements" dialog box or by using a SuperNova hot key.

To select the "Capitals" check box:

1. Press LEFT CONTROL + SPACEBAR. This will open the SuperNova control panel.
2. Press ALT + S. This will open the "Speech" menu.
3. DOWN ARROW to "Text Style Announcements" and press ENTER. This will open the "Text Style Announcements" dialog box. This is a dialog box with multiple tabs.
4. If you want capital announcements in edit areas, in the "Edit Areas" tab, TAB to the "Capitals" check box and press SPACEBAR to select this item.
5. If you want capital announcements in prompt areas like dialog boxes, message windows and worksheets, CONTROL + TAB to open the

"Prompt Areas" tab, then TAB to the "Capitals" check box and press SPACEBAR to select this item.

6. Repeat the previous steps for all other areas and modes where you want to have capital announcements.
7. TAB to the "OK" button and press SPACEBAR. This will confirm your changes and close the dialog box.

To use the SuperNova hot key:

Speech Hot Keys

Function	Desktop - Default NumPad Set	Laptop - Universal Set
Capitals on / off	CAPS LOCK + QUOTE	No Assignment

Note that this hot key changes the "Capitals" check box status in the "Text Style Announcements" dialog box corresponding to your current focus position.

Examples:

- Press the hot key in an edit area and only the status of the "Capitals" check box in the "Edit Areas" tab of the "Text Style Announcements" dialog box will change.
- Press the hot key in a menu and only the status of the "Capitals" check box in the "Menus" tab of the "Text Style Announcements" dialog box will change.

7.11.2 Turn on capital announcement when reading lines

By default, if you turn on capital announcement in edit areas then SuperNova will announce capitals when you are typing and when you are moving across a line of text. To also announce capitals when you are

reading a line, for example, when you press DOWN ARROW to move focus onto a new line, you must also select the "Announce capitals when reading lines" check box.

To do this:

1. Press LEFT CONTROL + SPACEBAR. This will open the SuperNova control panel.
2. Press ALT + S. This will open the "Speech" menu.
3. DOWN ARROW to "General Announcements" and press ENTER. This will open the "General Announcements" dialog box.
4. TAB to the "Announce capital letters when reading lines" check box and press SPACEBAR to select this item.
5. TAB to the "OK" button and press SPACEBAR. This will confirm your changes and close the dialog box.

7.11.3 Using sounds to indicate capitals

By default, SuperNova will describe capital letters by using words. Using words is a method all synthesisers support. However, it is also possible with some synthesisers to use a sound to indicate capitals.

To do this:

1. Press LEFT CONTROL + SPACEBAR. This will open the SuperNova control panel.
2. Press ALT + S. This will open the "Speech" menu.
3. DOWN ARROW to "General Announcements" and press ENTER. This will open the "General Announcements" dialog box.

4. TAB to the "Use Beeps for Capital Announcement" check box and press SPACEBAR to select this item. Note that this item will not be available if your current synthesiser does not support this option.
5. TAB to the "Use sound" list and use the Arrow Keys to select the sound you want to use to indicate capitals.
6. TAB to the "OK" button and press SPACEBAR. This will confirm your changes and close the dialog box.

The following table describes how SuperNova indicates capitals when you are using words and when you are using sounds.

Capital Announcements

Description	Words	Sounds
Reading a single capital letter	Caps + letter	1x beep
Reading a word with an initial capital	Capital + word	1x beep
Reading a word written using capital letters	All Caps + word	2x beep
Reading a word written with a mixture of lower case and upper case letters	Mix caps + word	2x beep

7.11.4 Using a pitch change to indicate capitals when spelling characters

You can indicate a capital letter by raising the pitch of your synthesiser's voice. This option is available when spelling characters.

Examples when you are spelling characters:

- You have Character Echo set to echo each character you type.

- You move across a line of text a character at a time.
- You delete a character.

To indicate capitals with a change in pitch:

1. Press LEFT CONTROL + SPACEBAR. This will open the SuperNova control panel.
2. Press ALT + S. This will open the "Speech" menu.
3. DOWN ARROW to "Voice Preferences" and press ENTER. This will open the "Voice Preferences" dialog box.
4. TAB to the "Increase voice pitch for spelt capitals" check box and press SPACEBAR to select this item. Note that this item will not be available if your current synthesiser does not support this option.
5. TAB to the "OK" button and press SPACEBAR. This will confirm your changes and close the dialog box.

7.12 Change how repeated characters are read

You can change the way SuperNova reads repeated characters that may appear on a line. You can have characters like dashes or plus signs individually spoken, read as a numeric value or indicated with a sound.

To do this:

1. Press LEFT CONTROL + SPACEBAR. This will open the SuperNova control panel.
2. Press ALT + S. This will open the "Speech" menu.
3. DOWN ARROW to "General Announcements" and press ENTER. This will open the "General Announcements" dialog box.

4. TAB to the "Repeats" button and press SPACEBAR. This will open the "Repeats" dialog box.
5. Choose how SuperNova should read repeated characters by selecting from the options available.
6. TAB to the "Close" button and press SPACEBAR. This will confirm your changes and closes the dialog box.

To have SuperNova use your settings requires you to have "Repeats" check box selected in the "Text Style Announcements" dialog box.

To do this:

1. Press LEFT CONTROL + SPACEBAR. This will open the SuperNova control panel.
2. Press ALT + S. This will open the "Speech" menu.
3. DOWN ARROW to "Text Style Announcements" and press ENTER. This will open the "Text Style Announcements" dialog box.
4. For each area you want your repeat settings used, TAB to the "Repeats" check box and press SPACEBAR to select this item.
5. TAB to the "OK" button and press SPACEBAR. This will confirm your changes and close the dialog box.

CHAPTER 8

Line View



Line View is a SuperNova reading mode. Line View shows the content of the screen as a single line scrolling across the screen. You can control the size, colours, font and the speed and position of the scrolling text.

8.1 Start Line View

You can start Line View from the "Visual" options in the SuperNova control panel or by using a hot key. Line View can start at the current focus position or it can ignore the current focus in favour of displaying the current window or screen.

Line View Hot Keys

Function	Desktop - Default NumPad Set	Laptop - Universal Set
Start Line View (restricted to document window)	LEFT CONTROL + NUMPAD PERIOD	No Assignment
Start Line View (restricted to whole window)	LEFT CONTROL + NUMPAD 9	No Assignment
Start Line View at current focus position (restricted to document window)	LEFT CONTROL + LEFT SHIFT + NUMPAD 2	ALT + SHIFT + L

Start Line View at current focus position (restricted to whole window)	LEFT CONTROL + NUMPAD 2	ALT + SHIFT + V
--	-------------------------	-----------------

8.2 Scroll text in Line View

You use various hot keys to control how the content scrolls in Line View.

Line View Hot Keys

Function	Desktop - Default NumPad Set	Laptop - Universal Set
Go to the Focus	NUMPAD 0	F5
Start and Stop	SPACEBAR	SPACEBAR
Go to the First line	HOME	HOME
Go to the Last Line	END	END
Previous Line	PAGE UP	PAGE UP
Next Line	PAGE DOWN	PAGE DOWN
Scroll Faster	UP ARROW	UP ARROW
Scroll Slower	DOWN ARROW	DOWN ARROW
Flip forward	ENTER	ENTER
Move Forward	RIGHT ARROW	RIGHT ARROW
Move Backwards	LEFT ARROW	LEFT ARROW
Exit Line View mode	ESCAPE	ESCAPE

Tip: Line View mode is restricted to what is visible on the screen. In some applications it is possible to change the application's view settings to increase the data visible at any one time. For example, in Microsoft Word Print Preview it is possible to set the page view to a maximum of 6 pages. All 6 pages will be scrolled in Line View mode.

8.3 Change the colour, font and items displayed in Line View

You can change the colours, fonts, objects and the size of the text shown in Line View.

To go to the Line View options:

1. Press Left control + SPACEBAR. This will open the SuperNova control panel.
2. Press ALT + V. This will open the "Visual" menu.
3. DOWN ARROW to "Advanced Options" and press ENTER. This will open the "Visual Advanced Options" dialog box.
4. CONTROL + TAB to open the "Line View " tab.
5. Make your changes.
6. TAB to the "OK" button and press SPACEBAR. This will confirm your changes and close the dialog box.

CHAPTER 9

Doc Reader



The Doc Reader lets you create your own reading environment, where the text, background and highlight can all be set to a value that makes reading comfortable for you. You can display text from documents, web pages or any other source showing text on the screen.

9.1 Launch Doc Reader

You can launch the Doc Reader by clicking the Doc Reader button on the "Visual" page of the SuperNova control panel or by pressing a SuperNova hot key.

Doc Reader Hot Keys

Function	Desktop - Default NumPad Set	Laptop - Universal Set
Launch Doc Reader	CAPS LOCK + NUMPAD PLUS	ALT + SHIFT + D

Your text will be loaded into the Doc Reader. This may take a few seconds. In the Doc Reader, you can use the Arrow Keys to move the highlight through the text or press TAB to move through the Doc Reader toolbar options.

9.2 Control reading

The items available on the Doc Reader toolbar control the reading environment. For advanced controls, including the colour settings, fonts and reading speed please go to the "Doc Reader Settings" dialog box.

After launching the Doc Reader, you can access the toolbar options by pressing TAB. Repeated presses of TAB will move you along the toolbar options and finally return you to the document window. You can also use SHIFT + TAB to navigate back across the toolbar buttons.

Doc Reader toolbar.



You press this button to start or stop the reading of the document. You can also start or stop the reading of the document by pressing SPACEBAR. When reading, the Doc Reader highlights the current word and automatically scrolls the document window.



You press this button to increase the size of the text. The change in the text size is independent from the custom font options in the Doc Reader Settings dialog box.



You press this button to shrink the size of the text. The change in the text size is independent from the custom font options in the Doc Reader Settings dialog box.



You press this button to open the "Highlight" menu, where you can select between line, sentence and paragraph. The item selected determines what is highlighted as a "unit" and the size of movement as you navigate up and down through your text.



You press this button to open the "Mode" menu, where you can choose between "Word wrap" or "Single line".

If you choose neither option then the line breaks will be determined by the document itself. This can result in text scrolling outside the browser window.



You press this button to open the "Doc Reader Settings" dialog box. Options include setting the foreground and background colour, font to use, how the document is loaded and reading speed.

9.3 Exit Doc Reader

To do this:

Press ESCAPE.

CHAPTER 10

Dolphin Cursor

The Dolphin cursor is a special kind of cursor created by SuperNova. The Dolphin Cursor allows you to read the contents of the screen line by line, or word by word, or letter by letter using your keyboard. You can use the Dolphin cursor to review any part of your computer's screen.

The Dolphin Cursor is also pre-set to turn on when specific areas in applications have the focus. This is usually in areas where the application provides no cursor to review the text on the screen, for example, when you are on a web page.

10.1.1 Turning the Dolphin cursor on and off

Function	Desktop - Default NumPad Set	Laptop - Universal Set
Toggle the Dolphin Cursor on / off	NUMPAD MINUS	CAPS LOCK + Z
Toggle the automatic Dolphin Cursor on / off	LEFT CONTROL + 4	LEFT CONTROL + 4
Type text into an edit box	LEFT CLICK or ENTER (when finished press ESCAPE)	LEFT CLICK or ENTER (when finished press ESCAPE)

10.1.2

10.1.3 Moving the Dolphin cursor using keyboard commands

You can move the Dolphin Cursor through the text on the screen using standard keyboard commands including:

- LEFT ARROW and RIGHT ARROW to move by character along a line.
- UP ARROW and DOWN ARROW to move by line.
- HOME to move to the start of a line.
- END to move to the end of a line.

You can also move the Dolphin Cursor through the text on the screen using more advanced keyboard commands including:

- LEFT CONTROL + LEFT ARROW and LEFT CONTROL + RIGHT ARROW to move by word along a line.
- LEFT CONTROL + HOME to move to the top of a window.
- LEFT CONTROL + END to move to the bottom of a window.
- TAB and SHIFT + tab to move to controls like links, buttons and check boxes.
- H and SHIFT + H to move to headings on web pages.

10.1.4 Moving the Dolphin cursor using the mouse pointer

You can move the Dolphin cursor to parts of the screen using the mouse.

To do this:

Press the MIDDLE MOUSE BUTTON.

Note: By default, the MIDDLE MOUSE BUTTON is assigned to "Click and Read From Here". To make the MIDDLE MOUSE BUTTON move the Dolphin cursor to the mouse pointer position requires you to de-select "Click and Read From Here". You can find this option in the "Speech" menu of the SuperNova control panel.

CHAPTER 11

Profiles

SuperNova provides a number of ready-made profiles that allow you to quickly tailor the amount of speech feedback generated by SuperNova without having to make multiple individual setting changes in SuperNova's control panel.

To select a profile:

1. Press LEFT CONTROL + SPACEBAR. The SuperNova control panel opens.
2. Press ALT + F. The File menu opens.
3. DOWN ARROW to "Profile..." and press ENTER. The "Profiles" dialog box opens.
4. In the "Profile" list box select the name of the profile that you wish to use. (A description of what the currently selected profile is tailored to do is displayed in the "Description" box directly below.)
5. Once your desired profile has been selected TAB to the "OK" button and press SPACEBAR. This will confirm your profile choice and close the dialog box.

The status bar of SuperNova's control panel will automatically update to display the name of your newly selected profile and any SuperNova control panel options that have been disabled by your currently selected profile will become grayed out.

You can also RIGHT CLICK on the profile name in the status bar in order to quickly change profiles.

Here is a list of the available profiles:

Note: Not all of the profiles listed below are available in every edition of SuperNova.

Magnifier

Magnification only for mouse users wanting the fastest performance. It will magnify, follow the mouse pointer and track the cursor as you type. This profile disables all speech and Braille.

Magnifier & Speech with mouse

Magnification with occasional speech, designed for mouse users. This profile enables speech on demand: it will speak text under the mouse and includes hotkeys to read the current line, sentence or paragraph. This profile disables automatic speech, Dolphin Cursor, reading tools and Braille output from a Braille display.

Magnifier & Speech with keyboard

Magnification with some automatic speech for mouse and keyboard users. This profile will speak as you type and read the item in focus, such as menus, list items etc. It switches on the Dolphin Cursor so you can read a web-page from the keyboard. Read From Here and Doc Reader are also included for hands-free reading with speech. This profile disables screen reading descriptions and Braille output from a Braille display.

Magnifier & Screen Reader

This profile supports both mouse and keyboard users, offering magnification with full screen reading in speech and/or Braille via a Braille display. This profile is fully-featured and offers the greatest flexibility.

Screen Reader

Full speech and/or Braille screen reading designed for keyboard users with no useful sight. This profile disables all magnification and visual effects and enables Braille output via a Braille display.

Screen Reader with visual effects

Full speech and/or Braille screen reading for keyboard users. This profile disables magnification but enables visual effects including visual highlighting of the focus. This profile is recommended for those with a limited field of vision, or when sharing your screen with a sighted colleague or trainer.

CHAPTER 12

Guest Mode and Emergency Mode

The pen drive edition of SuperNova contains a special feature called Guest Mode. Guest Mode allows your pen drive to operate in environments where you don't have Administrator access on the computer, such as public libraries and hotel business centres.

Startup

To start your pen drive edition of SuperNova run the program `Go.exe` (located in the root folder of your pen drive).

If you've previously installed the additional SuperNova pen drive components onto the computer then your pen drive is likely to auto-start when you insert it.

If you insert your pen drive on a computer that has an existing copy of SuperNova already installed that's the same version (or higher) as your pen drive version, or a computer that you have previously installed the additional pen drive components onto, then you will not have the Guest Mode option. Instead your pen drive will run in Normal Mode.

When you start your pen drive edition of SuperNova on a new computer, or a computer without any additional components installed, you'll receive a dialog box with two options:

- Continue in Guest Mode

or

- Install components and restart

If you choose the install components option a Windows' User Account Control dialog will appear requesting Administrator permissions. If you select "Yes" then the additional components will be installed. For Windows 7 the computer will then be restarted. For Windows 8 and Windows 10 only SuperNova will restart and it should then run in Normal Mode.

13.1 Limitations of Guest Mode

- Magnification will not pan around quite as smoothly as in Normal Mode. The computer's CPU and GPU usage may also be a little higher than in Normal Mode even when doing nothing. Magnification may also be not as smooth if you have more than one monitor in use.
- The Connect and View video stream is unlikely to update faster than 30 frames per second.
- Custom mouse pointers won't work. You can try to use the Windows control panel to set a custom mouse pointer, but this may also not work if you choose one of SuperNova's custom mouse pointers (due to a bug in Windows).
- There's no speech and magnification support at the Windows logon screen. (You can use Windows Narrator and/or Windows Magnifier here instead).
- Windows' User Account Control dialog boxes will not magnify or speak.
- Any application that runs as Administrator may not be accessible and may cause other problems, notably no SuperNova hot keys will work and you'll receive limited or no speech and braille output. This could

also prevent the user interface in Connect and View and Line View Mode from working. If you get stuck in this scenario press ALT+TAB to switch away from the application.

- The Internet Updater will continue to work for maps and scripts, but will not download product updates.
- Modern Windows 8/10 apps should speak and braille just as well as in Normal Mode. However, the image smoothing of magnified text may not work.
- Pressing PRINT SCREEN or ALT+PRINT SCREEN will capture the magnified screen or the area of the magnified screen where the window would be if it wasn't magnified (respectively). To capture unmagnified screens toggle magnification off before pressing PRINT SCREEN..
- TeamViewer remote control sessions will capture the magnified screen not the unmagnified screen.
- SuperNova's touch screen gestures will not work.
- SuperNova's OCR features may not work.

Please refer to the Dolphin web site for any other caveats.

Emergency Mode

If you run a copy of SuperNova that was installed on the computer's local hard disk, but some components are missing, then SuperNova will start up in Emergency Mode and you'll receive a dialog box with two options:

- Continue in Emergency Mode

or

- Install components and reboot

If you choose the install components and reboot option a Windows' User Account Control dialog will appear requesting Administrator permissions. If you select "Yes" then the additional components will be installed and the computer will be rebooted.

Emergency Mode is functionally equivalent to Guest Mode. Please see the limitations listed above for further details.

Settings Files

14.1 Create Application Settings

If you find you regularly adjust SuperNova output settings when working in different programs, then using Application Settings can provide an automated solution.

To create an Application Settings file:

1. Run the application you want to create an Application settings file for.
2. Press LEFT CONTROL + SPACEBAR. This will open the SuperNova control panel.
3. Press ALT + F. This will open the "File" menu with "New" selected.
4. RIGHT ARROW into the "New" sub-menu.
5. Select "Application settings" and press ENTER. This will open the "Select Settings file" dialog box.
6. Select "Create a new settings file".
7. TAB to the "OK" button and press SPACEBAR. This will open the "Create new Settings File" dialog box.
8. Give the new Application Settings file a name, choose whether to create an empty settings file or copy an existing settings file and then TAB to the "OK" button and press SPACEBAR. This will close the dialog box and return you to the SuperNova control panel.

Your Application Settings file will now be in use. You can check the Application Settings file currently in use by reading the Status Bar in the SuperNova control panel.

14.2 Create Situation Settings

If you find you regularly adjust SuperNova output settings when certain dialog boxes appear in an application then using Situation Settings can provide an automated solution. Situation Settings are a subset of Application Settings and are stored within the same file.

To create a Situation Setting:

1. Run the application and get into the situation you want to create a Situation Setting for.
2. Press LEFT CONTROL + SPACEBAR. This will open the SuperNova control panel.
3. Press ALT + F. This will open the "File" menu with "New" selected.
4. RIGHT ARROW into the "New" sub-menu.
5. Select "Situation settings" and press ENTER. This will open the "New Situation Settings" dialog box.
6. Select "Create new Situation".
7. TAB to the "OK" button and press SPACEBAR. This will open the "Enter a name for the new Situation" dialog box.
8. Give the new Situation Setting a name and then TAB to the "OK" button and press SPACEBAR. This will open the "Windows Name" dialog box.
9. If required, adjust the Window Name and then TAB to the "OK" button and press SPACEBAR. This will close the dialog box and return you to the SuperNova control panel.

Your Situation Setting will now be in use. You can check the Situation Setting currently in use by reading the Status Bar in the SuperNova control panel.

14.3 Save setting changes

SuperNova automatically saves the changes you make to SuperNova settings.

To stop this behaviour, deselect the "Always save user settings" check box. You can find the "Always save user settings" check box in the "Startup Preferences" dialog box, which you open through the "General" menu of the SuperNova control panel.

After deselecting the "Always save user settings" check box, an additional "Ask user" check box becomes available. If you select this check box then you will receive a message window during the quitting of SuperNova that asks if you want to proceed without saving the changes you have made.

You can also manually save settings at any time by choosing the "Save Settings" menu item. You can find this item in the "File" menu in the SuperNova control panel.

14.4 Change Map file

If you are using an application that does not have a specific Map file then SuperNova will use the "Default Application" Map file.

If you find SuperNova does not work well with your application using the "Default Application" Map file then it is worth trying another Map file. You can try as many Map files as you like.

Tips:

- Try using a Map file for a different version of the same application. You may find a Map file for an old version of an application will work just as well with a new version of the application.
- Try using a Map file created for an application from the same manufacturer. You may find a Map file for a different application but created by the same manufacturer will work well with your application, for example, if you are using a Microsoft application try using the Microsoft Office Map file.
- Try using the "MSAA Application" Map file if you know your application supports MSAA.

To choose a different Map file:

1. Run your application.
2. Press LEFT CONTROL + SPACEBAR.

The SuperNova control panel opens.

3. Press ALT + F.

The "File" menu opens with the "New" menu item selected.

4. RIGHT ARROW to open the "New" sub-menu, DOWN ARROW to "Map" and press ENTER.

The "Select Map file" dialog box opens.

5. DOWN ARROW to select the "Use an existing Map file" option.
6. TAB to the Map list and use the Arrow Keys to select a Map file.
7. TAB to the "OK" button and press SPACEBAR.

The dialog box closes.

8. Press ESCAPE.

The SuperNova control panel closes and you go back to the application.

The new Map file's detection settings will take effect immediately. If you continue to have problems accessing your application then please contact Dolphin or your local Dolphin Dealer for assistance.

CHAPTER 14

Media

You can use Media to search for and download books and magazines from online libraries and to browse news feeds, listen to radio stations and play popular podcasts.

IMPORTANT: The options available in Media will differ depending on your SuperNova Control Panel language.

15.1 Media Scan and Read

You can use Media's "Scan and Read" option to convert printed material and image-based files into a format you can read on the computer.

IMPORTANT: For SuperNova to successfully detect and work with a scanning device requires the device to be WIA compliant. Today, the majority of scanning devices are WIA compliant. Please refer to your manufacturer's support documentation for assistance.

15.1.1 Scan and read a file

You can use the Media "Scan and Read" option to convert image-based files into a format you can read on the computer. You do not require a scanner or digital camera connected to the computer to perform this task.

To do this from the SuperNova Control Panel:

1. Open the "Media" option, select "Scan and Read" and choose "From file".

2. Select the file you want to convert. If you are using a keyboard you can do this by pressing SHIFT + TAB to move into the file list, use the Arrow Keys to select the file and then press ENTER. If the file is in a different folder, use BACKSPACE to go one level up and use ENTER to open folders until you select the file and then press ENTER.
3. Select your conversion settings. Note that you must choose to open the document in Microsoft Word if you want to edit the converted document.
4. Select the "OK" button. A message window opens showing the progress of the conversion. When the conversion is complete the book opens in Microsoft Word or the SuperNova Reader.

15.1.2 Scan and read printed material

You can use the Media "Scan and Read" option to convert print material into a format you can read on the computer.

IMPORTANT: For SuperNova to successfully detect and work with a scanning device requires the device to be WIA compliant. Today, the majority of scanning devices are WIA compliant. Please refer to your manufacturer's support documentation for assistance.

To scan and read printed material from the SuperNova Control Panel:

1. Ensure the scanning device is correctly connected to the computer.
2. Open the "Media" option, select "Scan and Read" and choose "From scanner".
3. Select your conversion settings. Note that you must choose to open the document in Microsoft Word if you want to edit the converted document.
4. Select the "OK" button. A message window opens showing the progress of the conversion. When the conversion is complete a second message window opens asking if you want to stop or continue scanning pages.

5. If you want to scan more pages, add the new page to the scanner and select the "Add More Pages" button. Repeat this process until all pages are scanned and you are ready to read the text.
6. When done, select the "Stop Loading Pages" button. The book opens in Microsoft Word or the SuperNova Reader.

15.1.3 Adjust "Scan and Read" settings

The "Scan and Read Settings" dialog box gives you options to choose an alternative scanning device, scanning language, level of colour recognition, paper size and output folder.

You can go to the "Scan and Read Settings" dialog box in the SuperNova Control Panel by opening the "Media" option, selecting "Scan and Read" and choosing "Scan and Read Settings". To learn more about the available options see the "Scan and Read Settings" dialog box.

15.2 Media Books

You can use the "Books" option to search for, download and open books and magazines from online libraries. You can also use this option to open files on the computer. The books and files you select open in the SuperNova Reader.

15.2.1 Open a file in the SuperNova Reader:

You can use Media to open files on the computer. The file formats you can open include text files, ePub files, DAISY books, HTML files and PDF files. The files will open in the SuperNova Reader.

To open a file from the SuperNova Control Panel:

1. Open the "Media" option, select "Books" and choose "Open file in Reader". The "Open" dialog box opens.

2. Select the file you want to open. If you are using the keyboard you can SHIFT + TAB into the file list, use the Arrow Keys to select the file and then press ENTER. If the file is in a different folder, use BACKSPACE to go one level up and use ENTER to open folders until you select the file and then press ENTER.
3. Select your conversion settings.
4. When done, select the "OK" button. A message window opens showing the progress of the conversion. When the conversion is complete the book opens in the SuperNova Reader.
5. When you have finished reading the text, press ALT + F4 to close the window.

15.2.2 Open a book from an online library

You can use Media to download and open books from online libraries. The files will open in the SuperNova Reader.

To open a book from the SuperNova control panel:

1. Open the "Media" option, select "Books" and choose "Online books". The Bookshelf dialog box opens showing a list of available libraries. Note that some libraries may require you to register with them before you can download a book. If you want to use the services of these libraries then you must first contact the library to register with them and obtain user account details.
2. Select a library. Depending on the library, you will typically find a category list opens giving you further options to narrow down the list of books to be shown. This can sometimes be followed by a third and fourth list of subcategories.
3. Browse the available categories and books. Alternatively, if you know the title of the book you want to read, type in a key word in the search box and press ENTER. SuperNova will search the library for matches and list the results.

4. Select the book you want to read and choose the "Download" button.
5. When the download is complete, do one of the following:
 - If you want to read the book, select the "Read now" button. The book opens in the SuperNova Reader. When you have finished reading the text, press ALT + F4 to close the window.
 - If you want to copy the book to a portable device, ensure you have a portable device connected to the computer and select the "Send To" button. A dialog box opens listing the drives you can copy the book to. Select the drive and press ENTER. A confirmation message will appear when the process is complete.
 - If you want to remove the book from the computer, select the "Delete" button. A message window opens asking you to confirm the action. Choose "Yes" to delete the book.

15.2.3 Open the last book you were reading

You can continue reading the last book you opened by opening the "Media" option, selecting "Books" and choosing "Continue reading...". The book opens in the SuperNova Reader. You will be positioned at the last place you were in the book.

15.2.4 Open, copy or delete an existing book

You can open, copy and delete books you download from online libraries.

To do this from the SuperNova control panel:

1. Open the "Media" option, select "Books" and choose "My Books.. A list opens showing available books.
2. Select the book you want to open, copy or delete. A dialog box opens.
3. Do one of the following:

- If you want to read the book, select the "Read now" button. The book opens in the SuperNova Reader. When you have finished reading the text, press ALT + F4 to close the window.
- If you want to copy the book to a portable device, ensure you have a portable device connected to the computer and then select the "Send To" button. A dialog box opens listing the drives you can copy the book to. Select the drive and press ENTER. A confirmation message will appear when the process is complete.
- If you want to remove the book from the computer, select the "Delete" button. A message window opens asking you to confirm the action. Choose "Yes" to delete the book.

15.3 Media News, Radio Stations and Podcasts

You can use Media's "News", "Radio Stations" and "Podcasts" to keep up-to-date with the latest news and entertainment available on the Internet.

IMPORTANT: Some content requires RealPlayer to be installed. If you do not have support for this content then SuperNova displays a warning message. The message includes links to web sites where you can download the necessary files.

15.3.1 Read a news article

You can open, browse and read popular news articles available on the Internet using Media.

To do this from the SuperNova control panel:

1. Open the "Media" option and select "News". A list of popular news feeds opens.
2. Select a feed. If you do not find a feed you are interested in reading, select the "Add" button to explore other available feeds, which you can add to the Favourites list.

3. Select a headline. The dialog box closes and the news article opens in the default web browser.

15.3.2 Listen to a radio station

You can listen to popular radio stations available on the Internet using Media.

To do this from the SuperNova control panel:

1. Open the "Media" option and select "Radio". A list of popular radio stations opens.
2. If you do not find a radio station you are interested in listening to, select the "Add" button to explore other available radio stations, which you can add to the Favourites list.
3. Select a radio station. The dialog box closes and the radio station begins to play in an associated media player, for example, Windows Media Player.

15.3.3 Listen to a podcast

You can listen to popular podcasts available on the Internet using Media.

To do this from the SuperNova control panel:

1. Open the "Media" option and select "Podcasts". A list of popular podcasts opens.
2. If you do not find a podcast you are interested in listening to, select the "Add" button to explore other available podcasts, which you can add to the Favourites list.
3. Select a podcast and then choose an episode. The dialog box closes and the podcast begins to play in an associated media player, for example, Windows Media Player.

15.3.4 Adjust the favourite news, radio station and podcast listings

You can add, remove and organise the news, radio stations and podcast listings in Media.

To do this from the SuperNova control panel:

1. Open the "Media" option and select the web service you want to modify. A list opens showing available services.
2. Do one of the following:
 - To add a service, select the "Add" button. This opens a new dialog box containing a list of the services you can add and a list of the currently available services. Select a service to add and then choose the "Add" button. Repeat the steps for each service you want to add.
 - To remove a service, select the service, then choose the "Remove" button. Repeat the steps for each service you want to remove.
 - To organise the list of services, select a service and then choose the "Up" or "Down" button. This will move the item higher or lower down the list of services. Continue to press the button until you position the item in the list where you want it to be placed.
3. When done, select the "Close" button.

15.4 SuperNova Reader keyboard commands

The books you open from the Bookshelf appear as an HTML page in the SuperNova Reader. This allows you to read and navigate the book in the same way you read web pages.

In addition, SuperNova includes the following keyboard commands:

Function	Hot key
Move between document window and toolbar	F6

Move between the buttons on the toolbar	TAB and SHIFT + TAB
Play / stop (only available if book has audio content)	F5
Open Content	ALT + C
Open Settings	ALT + S
Zoom In	ALT + I
Zoom Out	ALT + O
Exit	ALT + E (or ALT + F4)

CHAPTER 15

Connect and View



SuperNova Connect and View lets you connect any high-definition (HD) camera to your computer and magnify items including newspapers, magazines, bills, labels and even objects onto your computer screen.

You can also use SuperNova Connect and View to connect to other computers and view what is on their screen on your own computer screen. For example, you can connect to a teacher's interactive whiteboard or a trainer's computer and follow what they are presenting on your own computer screen.

16.1 Camera Connect and View

Camera Connect and View lets you connect any High-Definition (HD) Camera to your computer and magnify printed material and objects onto your computer screen.

You can use any high-definition (HD) camera with SuperNova. For an official list of cameras that have been tested and are recommended by Dolphin, please visit the Dolphin web site or contact your local Dolphin dealer.

Before you can use SuperNova Camera Connect and View you will need to acquire a suitable camera, setup your workstation and select the camera in SuperNova.

16.1.1 Acquiring a suitable camera and stand

For best results you will need an HD camera with autofocus, delivering 1080p video resolution with automatic low-light correction. This will require a USB 2.0 port connection to the computer.

In addition to the camera, you should use a stand to hold the camera on the desk. The use of a stand makes sure the camera is secure and stable over the items you want to view.

16.1.2 Setting up your workstation

For best results, ensure you position the camera close to your computer screen to make it easy to adjust the items you want to view while still being able to view the computer screen. You should also make sure the camera is in a safe, clear, well lit area on your desk to avoid shadows falling across the items you want to view.

16.1.3 Selecting the camera in SuperNova

Once you have setup the camera on your desk and connected it to the computer, you must select the camera in the SuperNova "Connect and View Settings" dialog box.

To do this in the SuperNova Control Panel:

1. In the "Visual" option, open the "Connect and View" submenu and choose "Settings". The "Connect and View Settings" dialog box opens showing the "Camera" settings.
2. Select your camera from the "Devices" list and choose the "OK" button. If your camera is not listed then ensure it is properly connected and switched on.

16.1.4 Using your camera with SuperNova

You can use the following options to enable, configure and adjust the camera image with SuperNova.

Switching on the Viewer

After selecting the device in the "Connect and View Settings" dialog box, you can view its output by turning on "Connect and View". You can switch on or off "Connect and View" using the "Visual" options in the SuperNova control panel or by using a hot key.

Magnifier Hot Keys

Function	Desktop - Default NumPad Set	Laptop - Universal Set
Connect and View on off	ALT + NUMPAD ENTER	LEFT SHIFT + CAPS LOCK + 0

When you turn on "Connect and View" a portion of the screen begins to show the image from the camera or whiteboard. This area is called the Viewer. You can change the position of the Viewer on the screen and you can use the Viewer Toolbar to adjust the size, colour and contrast of the image to make it easier to see.

Switching between the Viewer and the desktop

To access the Viewer Toolbar and to make adjustments to the image requires you to place the focus in the Viewer area.

You can switch between the Viewer and the desktop by pressing CAPS LOCK + MIDDLE MOUSE BUTTON. If you have both an active camera and whiteboard connection then pressing CAPS LOCK + MIDDLE MOUSE BUTTON cycles you between camera, whiteboard and desktop.

Adjusting the Viewer position and size

By default, the Viewer appears on the top half of the screen. You can change the position and size of the Viewer through the "Connect and View" settings in the SuperNova Control Panel. You can dock the viewer to the top, bottom, left or right side of the screen and the Viewer can be set to fill 80%, 50% or 20% of the screen area.

You can also set the Viewer to "Full Screen". While in Full Screen Mode, you can continue to use CAPS LOCK + MIDDLE MOUSE BUTTON to switch between the Viewer and the desktop.

Showing and hiding the Viewer toolbar

The Viewer Toolbar provides you with controls to modify the image you are viewing. The options available on the toolbar differ depending on whether you are connecting to a camera or connecting to a whiteboard.

You can use the Show and Hide buttons to control the appearance of the Viewer Toolbar. If you hide the toolbar then you will be increasing the amount of information that appears in the Viewer.

The style of the Show and Hide buttons differs depending on where the Viewer is docked. For example, if the Viewer is docked to the top then the Show and Hide buttons appear as Arrows pointing to the left and right.



If the Viewer window is docked to the left then the Show and Hide buttons appear as Arrows pointing up and down.



In all cases, the position of the Hide button is always the last button on the Viewer Toolbar.

Magnifying the image in the Viewer



You can change the size of the image in the Viewer by using the magnification buttons in the Viewer Toolbar. If you are using a touchscreen device, you can also change magnification by doing a 2 finger pinch or 2 finger stretch.

You can also use the following hot keys:

Magnifier Hot Keys

Function	Desktop Hot Keys	Laptop - Universal Set
Increase magnification	LEFT CONTROL + NUMPAD PLUS or CAPS LOCK + MOUSE WHEEL UP	ALT + EQUALS or CAPS LOCK + MOUSE WHEEL UP
Reduce magnification	LEFT CONTROL + NUMPAD MINUS or CAPS LOCK + MOUSE WHEEL DOWN	ALT + DASH or CAPS LOCK + MOUSE WHEEL DOWN

Viewing other parts of the image

If you find the image you are looking at is larger than what is appearing in the Viewer then you can move the mouse pointer or use SuperNova's Pan feature to scroll the image with the keyboard.

To pan across the screen press RIGHT CONTROL plus an Arrow Key. Hold down RIGHT CONTROL to keep panning. Press the same Arrow Key repeatedly (keeping RIGHT CONTROL pressed) to speed up the panning. Press the opposite Arrow Key to slow down.

To learn more about Panning see "View other parts of the screen".

Rotating the image in the Viewer



You can rotate the image in the viewer to present it in a way that is easiest for you to read. This avoids the necessity to rotate the text under the camera. With each press of this button the image rotates by 90 degrees clockwise.

Changing the colours of the image



If you are finding viewing the image difficult because of the colours and contrast, then you can use the Colour Changer button to cycle through a number of different colour schemes.

SuperNova saves the Colour Scheme you choose in the "Connect and View Settings" dialog box.

Controlling Auto Focus



A camera's Auto Focus system is designed to automatically adjust the camera lens to give you the sharpest possible image of the subject. In some cases the camera may be regularly attempting to refocus on what it

sees as a changing subject, which may be a distraction. If you find the Auto Focus regularly refocusing then you may wish to turn this feature off.

Not all cameras include an Auto Focus feature. SuperNova will only show the Auto Focus button if the camera supports this feature.

Locking the image



The Lock Image button lets you freeze the screen on the current image. This allows you to explore the image in more detail without the possibility of the image changing.

Although available as a Viewer Toolbar button when using a camera, you may find this option more useful when viewing presentations as it will allow you to freeze the screen on a particular slide rather than relying on the teacher to stop the presentation at that point. When you unlock the image the Viewer refreshes the current camera image or shows the current presenter's computer screen.

Capture Viewer image



The Capture Image button lets you copy the image in the Viewer to the Windows Clipboard. The image SuperNova captures is the full image, irrespective of the size of magnification you are using in the Viewer.

You can then copy the image into a document or you can convert the image you have captured to text by using the SuperNova "Scan and Read" options.

16.1.5 Camera settings

You can find all the SuperNova Camera Connect and View settings in the SuperNova Control Panel. You can find these options through the Visual button bar or through the Connect and View menu. For further information see the Connect and View Settings dialog box.

16.2 Whiteboard Connect and View

Whiteboard Connect and View uses virtual network computing (VNC) to let you connect to another computer and magnify and track what appears on their screen on your computer screen.

VNC is a type of software that makes it possible to view another computer over a network connection. There are a number of free and low cost VNC software programs available. These include tight VNC, Ultra VNC and Real VNC. The VNC software must be installed and running on the presenter's computer for SuperNova to make a connection. The VNC software does not need to be installed on your computer.

For more information about VNC programs that have been tested and are recommended by Dolphin, please visit the Dolphin web site or contact your local Dolphin dealer.

16.2.1 Connecting to the presenter's computer

You can connect to the presenter's computer that is running VNC software by creating a whiteboard profile. A whiteboard profile will require you to enter specific information, which may only be available from your Network Administrator. This information includes the name of the computer and any security password set in the VNC software.

To create a whiteboard profile, do the following in the SuperNova Control Panel:

1. In the "Visual" option, open the "Connect and View" submenu and select "Settings". The "Connect and View Settings" dialog box opens.
2. If this is a new profile you want to create, select the "Whiteboard" page and choose the "New" button. The "Whiteboard Settings" dialog box opens.
3. If this is a profile you want to edit, open the "Whiteboard" page, select the profile from the "Devices" list and choose the "Settings" button. The "Whiteboard Settings" dialog box opens.
4. In the "Profile" box type a name for this profile. Give the profile a meaningful name, for example, the name of the classroom, teacher or trainer.
5. Complete the remaining fields as provided to you by your Network Administrator. For further information see the Connect and View Settings dialog box section.
6. Select the "OK" button. SuperNova saves the settings and goes back to the previous dialog box.
7. Select the "OK" button. SuperNova saves the profile, adds it to the Devices list and closes the dialog box.

16.2.2 Viewing the presenter's computer

To see the presenter's computer screen requires you to select the profile in the "Connect and View Settings" dialog box and then to turn on the Connect and View feature.

When you are connected to the presenter's computer, you can use the following options to enable, configure and adjust the Viewer.

Switching on the Viewer

After selecting the device in the "Connect and View Settings" dialog box, you can view its output by turning on "Connect and View". You can switch on or off "Connect and View" using the "Visual" options in the SuperNova control panel or by using a hot key.

Magnifier Hot Keys

Function	Desktop - Default NumPad Set	Laptop - Universal Set
Connect and View on off	ALT + NUMPAD ENTER	LEFT SHIFT + CAPS LOCK + 0

When you turn on "Connect and View" a portion of the screen begins to show the image from the camera or whiteboard. This area is called the Viewer. You can change the position of the Viewer on the screen and you can use the Viewer Toolbar to adjust the size, colour and contrast of the image to make it easier to see.

Switching between the Viewer and the desktop

To access the Viewer Toolbar and to make adjustments to the image requires you to place the focus in the Viewer area.

You can switch between the Viewer and the desktop by pressing CAPS LOCK + MIDDLE MOUSE BUTTON. If you have both an active camera and whiteboard connection then pressing CAPS LOCK + MIDDLE MOUSE BUTTON cycles you between camera, whiteboard and desktop.

Showing and hiding the Viewer toolbar

The Viewer Toolbar provides you with controls to modify the image you are viewing. The options available on the toolbar differ depending on whether you are connecting to a camera or connecting to a whiteboard.

You can use the Show and Hide buttons to control the appearance of the Viewer Toolbar. If you hide the toolbar then you will be increasing the amount of information that appears in the Viewer.

The style of the Show and Hide buttons differs depending on where the Viewer is docked. For example, if the Viewer is docked to the top then the Show and Hide buttons appear as Arrows pointing to the left and right.



If the Viewer window is docked to the left then the Show and Hide buttons appear as Arrows pointing up and down.



In all cases, the position of the Hide button is always the last button on the Viewer Toolbar.

Magnifying the image in the Viewer



You can change the size of the image in the Viewer by using the magnification buttons in the Viewer Toolbar. If you are using a touchscreen device, you can also change magnification by doing a 2 finger pinch or 2 finger stretch.

You can also use the following hot keys:

Magnifier Hot Keys

Function	Desktop Hot Keys	Laptop - Universal Set
Increase magnification	LEFT CONTROL + NUMPAD PLUS or CAPS LOCK + MOUSE WHEEL UP	ALT + EQUALS or CAPS LOCK + MOUSE WHEEL UP
Reduce magnification	LEFT CONTROL + NUMPAD MINUS or CAPS LOCK + MOUSE WHEEL DOWN	ALT + DASH or CAPS LOCK + MOUSE WHEEL DOWN

Viewing other parts of the image

If you find the image you are looking at is larger than what is appearing in the Viewer then you can move the mouse pointer or use SuperNova's Pan feature to scroll the image with the keyboard.

To pan across the screen press RIGHT CONTROL plus an Arrow Key. Hold down RIGHT CONTROL to keep panning. Press the same Arrow Key repeatedly (keeping RIGHT CONTROL pressed) to speed up the panning. Press the opposite Arrow Key to slow down.

To learn more about Panning see "View other parts of the screen".

Changing the colours of the image



If you are finding viewing the image difficult because of the colours and contrast, then you can use the Colour Changer button to cycle through a number of different colour schemes.

SuperNova saves the Colour Scheme you choose in the "Connect and View Settings" dialog box.

Tracking the presenter's movement



You can control the tracking of the presenter's movement by using the Track Presenter button. When you turn on this feature, the image in the Viewer will automatically scroll to follow the movement of the presenter's mouse pointer around the screen. The tracking of the presenter's mouse pointer will temporarily stop if you begin to move your mouse pointer and tracking resumes again when you stop moving your mouse pointer.

You can prevent the Viewer following the presenter's mouse pointer by turning this feature off.

Locking the image



The Lock Image button lets you freeze the screen on the current image. This allows you to explore the image in more detail without the possibility of the image changing.

Although available as a Viewer Toolbar button when using a camera, you may find this option more useful when viewing presentations as it will allow you to freeze the screen on a particular slide rather than relying on the teacher to stop the presentation at that point. When you unlock the image the Viewer refreshes the current camera image or shows the current presenter's computer screen.

Capture Viewer image



The Capture Image button lets you copy the image in the Viewer to the Windows Clipboard. The image SuperNova captures is the full image, irrespective of the size of magnification you are using in the Viewer.

You can then copy the image into a document or you can convert the image you have captured to text by using the SuperNova "Scan and Read" options.

16.2.3 Whiteboard settings

You can find all the SuperNova Whiteboard Connect & View settings in the SuperNova Control Panel. You can find these options through the Visual button bar or through the Connect & view menu. For further information see the Connect & View Settings dialog box.

Touchscreen

17.1 Touchscreen terminology

The following table provides a description of touchscreen gestures and what the gesture means.

Gesture	How to do it
Tap	Tap the screen to perform an action, for example, tap a button to activate the button. Some gestures may require you to tap the screen with 1, 2, 3 or more fingers multiple times.
Press and hold	Press a finger on the screen and continue to hold the finger against the screen.
Swipe	A flick of a finger across the screen.
Slide	A longer slower movement of a finger across the screen usually in a vertical or horizontal direction from the screen edge.

Pinch	Press two fingers on the screen and move them together, as if you are pinching them together.
Stretch	Press two fingers on the screen and move them away from each other, as if you are stretching them apart.

17.2 Touchscreen gestures

The following table provides a list of the touchscreen gestures you can use to control SuperNova.

Function	Gesture
Toggle magnification	3 finger double tap
Increase magnification	2 finger stretch
Reduce magnification	2 finger pinch
Pan	1 finger swipe
Show / hide the SuperNova Touch Bar	3 finger single tap
Announce text under the finger position	1 finger press and hold

More gestures.

In addition to the SuperNova touchscreen gestures, here are some more touchscreen gestures to help you get around Windows.

Function	Gesture
Open the Charms (Search, Share, Start, Devices, Settings).	Slide in from over the right edge with 1 finger
Switch apps	Swipe in from over the left edge with 1 finger.
Open the App Menu. The App Menu shows commands like Save, Edit and Delete.	Slide in from over the bottom edge with 1 finger.
Close the open app	Slide in from over the top edge with 1 finger and continue the motion, dragging the app down to the bottom of the screen.
Open the context menu (this is the same as performing a right click on a selected item)	1 finger double tap, hold and release.
Drag and drop objects around the screen, for example, when re-arranging the Start Screen or desktop.	1 finger double tap and hold, then slide to move the object. Lift finger to release.

17.3 SuperNova Touch Bar

The SuperNova Touch Bar is a touchscreen toolbar that appears at the bottom of the screen when you do a 3 finger single tap. The Touch Bar gives you access to the most common SuperNova actions including turning magnification on and off, changing magnification size and turning the SuperNova Colour Scheme on and off.



17.4 Typing on a touchscreen

SuperNova automatically shows an onscreen keyboard when you need to type and you do not have a keyboard connected to the device. The onscreen keyboard appears at the bottom of the screen and uses large print high contrast keys.

You can also make the keyboard appear at any time by tapping the Keyboard button in the SuperNova Touch Bar or by tapping the Keyboard button in the Windows Notification area. To hide the keyboard, tap the large "X" button in the bottom right corner of the onscreen keyboard.

You can adjust the appearance of the onscreen keyboard in the Touchscreen Settings dialog box.

17.5 Adjust touch sensitivity

You can adjust how sensitive SuperNova is to your taps and swipes on the touchscreen.

For example, If you find that SuperNova is interpreting a double tap gesture as two single tap gestures then you may need to increase the double-tap timeout". In the same way, if you find that when attempting to drag and drop a desktop icon the icon is not being picked up, then you may need to increase the double-tap timeout or the pass-through timeout".

You make the changes to SuperNova's touchscreen settings in the Touchscreen dialog box.

Hot key conflicts

Sometimes you can find SuperNova hot keys conflict with an application's hot keys. You can resolve this issue in a number of different ways.

18.1 Turn off SuperNova hot keys

You can resolve a hot key conflict between SuperNova and your application by turning off SuperNova's hot keys. This disables all hot keys except for the hot key to turn on SuperNova's hot keys again.

Action Hot Keys

Function	Desktop - Default NumPad Set	Laptop - Universal Set
Turn off or on hot keys	LEFT CONTROL + 8	SHIFT + CAPS LOCK + 3

18.2 Tell SuperNova to ignore the next key press

You can resolve a hot key conflict between SuperNova and your application by telling SuperNova to ignore the next key press. Once you have released the keys, SuperNova automatically turns on its hot keys again.

Action Hot Keys

Function	Desktop - Default NumPad Set	Laptop - Universal Set
Pass the next key press through to your application	LEFT CONTROL + 7	CAPS LOCK + 3

18.3 Reassign a SuperNova hot key

You can add, delete or reassign any SuperNova hot key. You can do this to resolve hot key conflicts between SuperNova and your application or to change a hot key command to a key combination you find easier to use.

To do this:

1. Press LEFT CONTROL + SPACEBAR.

The SuperNova control panel opens.

2. Press ALT + G.

The "General" menu opens.

3. DOWN ARROW to "Keyboard and Hot Keys" and press ENTER.

A submenu opens.

4. DOWN ARROW to "Hot Keys" and press ENTER.

The "Hot Keys" dialog box opens.

5. TAB through, using the "Hot Key Command Set" list and "Command" list to select the assigned hot key you want to change.

6. Use the "Add key" button, "Replace key" button or "Remove key" button to change the hot key.

7. TAB to the "OK" button and press SPACEBAR.

SuperNova confirms the changes and closes the dialog box.

Tip: If you find it difficult to locate your hot key from the categories and commands available then use the SuperNova Key Describer to help.

CHAPTER 18

Hot Keys**19.1 Actions**

Function	Desktop - Default NumPad Set	Laptop - Universal Set
Control Panel Pop Up Menu	CAPS LOCK + SPACEBAR	CAPS LOCK + SPACEBAR
Doc Reader	SHIFT + ALT + D	CAPS LOCK + F11
SuperNova Help	CAPS + F1 or RIGHT CONTROL + RIGHT SHIFT + FORWARD SLASH	CAPS + F1
Hot Keys on / off	LEFT CONTROL + 8	SHIFT + CAPS LOCK + 3
Open Control Panel	LEFT CONTROL + SPACEBAR	LEFT CONTROL + SPACEBAR
Pass next key to application	LEFT CONTROL + 7	CAPS LOCK + 3
Quit	CAPS LOCK + F4	CAPS LOCK + F4
Row / Column Mode Toggle	LEFT CONTROL + 9	No Assignment
Screen Refresh	LEFT CONTROL + SEMI COLON	CAPS LOCK + ESCAPE

19.2 Speech

Function	Desktop - Default NumPad Set	Laptop - Universal Set
Anti-stutter system on / off	LEFT CONTROL + 6	No Assignment
Capitals on / off	CAPS LOCK + QUOTE	No Assignment
Character Echo Cycle	CAPS LOCK + SEMI COLON	CAPS LOCK + 2
Key Describe Mode	CAPS LOCK + FORWARD SLASH	CAPS LOCK + 1
Language Down	LEFT CONTROL + FULL STOP	No Assignment
Language Up	LEFT CONTROL + COMMA	No Assignment
Monitor Markers	LEFT CONTROL + 5	No Assignment
Mute	LEFT CONTROL	LEFT CONTROL
Next Synthesiser	LEFT CONTROL + LEFT SHIFT + RIGHT BRACKET	No Assignment
Previous Synthesiser	LEFT CONTROL + LEFT SHIFT + LEFT BRACKET	No Assignment

Speed decrease	LEFT CONTROL + LEFT SHIFT + MINUS	CONTROL + ALT + PAGE DOWN
Speed Increase	LEFT CONTROL + LEFT SHIFT + EQUALS	CONTROL + ALT + PAGE UP
Voice on / off	LEFT CONTROL + 0	CONTROL + ALT + 0
Volume decrease	LEFT CONTROL + MINUS	CONTROL + ALT + MINUS
Volume increase	LEFT CONTROL + EQUALS	CONTROL + ALT + EQUALS

19.3 Speak Keys

Function	Desktop - Default NumPad Set	Laptop - Universal Set
Character	NUMPAD 4	CAPS LOCK + LEFT ARROW
Control	NUMPAD PERIOD	No Assignment
Focus	NUMPAD 0	CAPS LOCK + UP ARROW
Line	NUMPAD 6	No Assignment
Window	NUMPAD 9	CAPS LOCK + B
Word	NUMPAD 5	CAPS LOCK + RIGHT ARROW

19.4 Read From Here

Function	Desktop - Default NumPad Set	Laptop - Universal Set
Click and Read From Here	MIDDLE MOUSE BUTTON	MIDDLE MOUSE BUTTON
Enhance Read From Here	LEFT CONTROL + CAPS LOCK + 1	No Assignment
Read From Here	NUMPAD PLUS	CAPS LOCK + DOWN ARROW
Stop Reading	NUMPAD PLUS or ESCAPE or LEFT CONTROL or RIGHT CONTROL	ESCAPE or LEFT CONTROL or RIGHT CONTROL

19.5 Magnifier

Function	Desktop - Default NumPad Set	Laptop - Universal
Colour Scheme on off	LEFT CONTROL + NUMPAD 0	SHIFT + ALT + C

Create Hooked Area	LEFT CONTROL + NUMPAD 5	LEFT SHIFT + LEFT CONTROL + ALT + H
Foci Highlights on off	LEFT CONTROL + LEFT SHIFT + BACK SLASH	LEFT SHIFT + LEFT ALT + O
Hooked areas on off	LEFT CONTROL + NUMPAD 3	No Assignment
Jump Down	LEFT CONTROL + CAPS LOCK + NUMPAD 2	LEFT ALT + PAGE DOWN
Jump Left	LEFT CONTROL + CAPS LOCK + NUMPAD 4	LEFT ALT + HOME
Jump Right	LEFT CONTROL + CAPS LOCK + NUMPAD 6	LEFT ALT + END
Jump Up	LEFT CONTROL + CAPS LOCK + NUMPAD 8	LEFT ALT + PAGE UP
Magnification Decrease	LEFT CONTROL + NUMPAD MINUS or CAPS LOCK + MOUSE WHEEL DOWN	LEFT ALT + MINUS or CAPS LOCK + MOUSE WHEEL DOWN

Magnification Increase	LEFT CONTROL + NUMPAD PLUS or CAPS LOCK + MOUSE WHEEL UP	LEFT ALT + EQUALS or CAPS LOCK + MOUSE WHEEL UP
Magnification X Decrease	RIGHT CONTROL + NUMPAD SLASH	No Assignment
Magnification X Increase	LEFT CONTROL + NUMPAD SLASH	No Assignment
Magnification Y Decrease	RIGHT CONTROL + NUMPAD STAR	No Assignment
Magnification Y Increase	LEFT CONTROL + NUMPAD STAR	No Assignment
Magnifier on off	LEFT CONTROL + NUMPAD ENTER	ALT + 0
Modify Hooked Areas	LEFT CONTROL + NUMPAD 6	LEFT SHIFT + ALT + H
Modify Primary Area	LEFT CONTROL + NUMPAD 4	LEFT SHIFT + ALT + A

Move Down	RIGHT CONTROL + RIGHT SHIFT + DOWN ARROW	RIGHT CONTROL + RIGHT SHIFT + DOWN ARROW
Move Left	RIGHT CONTROL + RIGHT SHIFT + LEFT ARROW	RIGHT CONTROL + RIGHT SHIFT + LEFT ARROW
Move Right	RIGHT CONTROL + RIGHT SHIFT + RIGHT ARROW	RIGHT CONTROL + RIGHT SHIFT + RIGHT ARROW
Move to bottom left of screen	RIGHT CONTROL + NUMPAD 1	No Assignment
Move to bottom of screen	RIGHT CONTROL + NUMPAD 2	No Assignment
Move to bottom right of screen	RIGHT CONTROL + NUMPAD 3	No Assignment
Move to left edge of screen	RIGHT CONTROL + NUMPAD 4	No Assignment
Move to middle of screen	RIGHT CONTROL + NUMPAD 5	No Assignment
Move to right edge of screen	RIGHT CONTROL + NUMPAD 6	No Assignment
Move to top left of screen	RIGHT CONTROL + NUMPAD 7	No Assignment

Move to top of screen	RIGHT CONTROL + NUMPAD 8	No Assignment
Move to top right of screen	RIGHT CONTROL + NUMPAD 9	No Assignment
Move Up	RIGHT CONTROL + RIGHT SHIFT + UP ARROW	RIGHT CONTROL + RIGHT SHIFT + UP ARROW
Orientation Cycle	LEFT CONTROL + NUMPAD 1	No Assignment
Overview mode on off	LEFT CONTROL + BACK SLASH	No Assignment
Pan Down	RIGHT CONTROL + DOWN ARROW	RIGHT CONTROL + DOWN ARROW
Pan Left	RIGHT CONTROL + LEFT ARROW	RIGHT CONTROL + LEFT ARROW
Pan Right	RIGHT CONTROL + RIGHT ARROW	RIGHT CONTROL + RIGHT ARROW
Pan Up	RIGHT CONTROL + UP ARROW	RIGHT CONTROL + UP ARROW
Primary Magnifier Type Cycle	LEFT CONTROL + NUMPAD 7	LEFT SHIFT + ALT + M

Restore Position	RIGHT CONTROL + NUMPAD PERIOD	No Assignment
Save Position	RIGHT CONTROL + NUMPAD 0	No Assignment
Switch monitors	CAPS LOCK + MIDDLE MOUSE BUTTON	CAPS LOCK + MIDDLE MOUSE BUTTON
Text smoothing on off	LEFT CONTROL + NUMPAD 8	No Assignment

19.6 Magnifier Window Adjustment

Function	Desktop - Default NumPad Set	Laptop - Universal Set
Alter hook with mouse	LEFT MOUSE BUTTON	LEFT MOUSE BUTTON
Area Down	DOWN ARROW	DOWN ARROW
Area Left	LEFT ARROW	LEFT ARROW
Area Right	RIGHT ARROW	RIGHT ARROW
Area Up	UP ARROW	UP ARROW
Cancel Get Hook Area	ESCAPE	ESCAPE
Contents Down	LEFT SHIFT + DOWN ARROW	LEFT SHIFT + DOWN ARROW
Contents Left	LEFT SHIFT + LEFT ARROW	LEFT SHIFT + LEFT ARROW

Contents Right	LEFT SHIFT + RIGHT ARROW	LEFT SHIFT + RIGHT ARROW
Contents Up	LEFT SHIFT + UP ARROW	LEFT SHIFT + UP ARROW
Cycle Orientation	LEFT CONTROL + NUMPAD 1	No Assignment
Decrease Magnification	LEFT CONTROL + NUMPAD MINUS or CAPS LOCK + MOUSE WHEEL DOWN	ALT + MINUS or CAPS LOCK + MOUSE WHEEL DOWN
Decrement X Magnification	RIGHT CONTROL + NUMPAD SLASH	No Assignment
Decrement Y Magnification	RIGHT CONTROL + NUMPAD STAR	No Assignment
Delete Hooked Area	DELETE	DELETE
Exit Modification Mode	ESCAPE	ESCAPE
Increase Magnification	LEFT CONTROL + NUMPAD PLUS or CAPS LOCK + MOUSE WHEEL DOWN	ALT + EQUALS or CAPS LOCK + MOUSE WHEEL UP
Increment X Magnification	LEFT CONTROL + NUMPAD SLASH	No Assignment

Increment Y Magnification	LEFT CONTROL + NUMPAD STAR	No Assignment
Make narrower	LEFT CONTROL + LEFT ARROW	LEFT CONTROL + LEFT ARROW
Make shorter	LEFT CONTROL + UP ARROW	LEFT CONTROL + UP ARROW
Make taller	LEFT CONTROL + DOWN ARROW	LEFT CONTROL + DOWN ARROW
Make wider	LEFT CONTROL + RIGHT ARROW	LEFT CONTROL + RIGHT ARROW
Move area with mouse	Z	Z
Move contents of area with mouse	C	C
OK Get Hook Area	ENTER or RIGHT MOUSE BUTTON	ENTER or RIGHT MOUSE BUTTON
Resize area with mouse	X	X
Text Smoothing	LEFT CONTROL + NUMPAD 8	No Assignment
Tracking on off	LEFT SHIFT + NUMPAD 8	No Assignment

19.7 Dolphin Cursor (General)

Function	Desktop - Default NumPad Set	Laptop - Universal Set
Activate Press	SPACEBAR	SPACEBAR
Automatic Dolphin Cursor on / off	LEFT CONTROL + 4	LEFT CONTROL + 4
Interact with Control	ENTER	ENTER
Turn dolphin Cursor Off	NUMPAD MINUS	CAPS LOCK + Z
Turn dolphin Cursor On	NUMPAD MINUS	CAPS LOCK + Z

19.8 Dolphin Cursor (Movement)

Function	Desktop - Default NumPad Set	Laptop - Universal Set
Bottom of window / area	LEFT CONTROL + END	CONTROL + END
End of line	END	END
Left	LEFT ARROW	LEFT ARROW
Left Word	LEFT CONTROL + LEFT ARROW	LEFT CONTROL + LEFT ARROW
Next Large Object	PAGE DOWN	PAGE DOWN
Next Line	DOWN ARROW	DOWN ARROW
Next Object	TAB	TAB
Previous Large Object	PAGE UP	PAGE UP
Previous Line	UP ARROW	UP ARROW

Previous Object	LEFT SHIFT + TAB	SHIFT + TAB
Right	RIGHT ARROW	RIGHT ARROW
Right Word	LEFT CONTROL + RIGHT ARROW	LEFT CONTROL + RIGHT ARROW
Route Dolphin Cursor to Mouse	MIDDLE MOUSE BUTTON	MIDDLE MOUSE BUTTON
Start of line	HOME	HOME
Top of Window / Area	LEFT CONTROL + HOME	CONTROL + HOME

19.9 Line View

Function	Desktop - Default NumPad Set	Laptop - Universal Set
Decrease magnification	LEFT CONTROL + NUMPAD MINUS or CAPS LOCK + MOUSE WHEEL DOWN	ALT + MINUS or CAPS LOCK + MOUSE WHEEL DOWN
Decrement X magnification	RIGHT CONTROL + NUMPAD SLASH	No Assignment

Decrement Y magnification	RIGHT CONTROL + NUMPAD STAR	No Assignment
Exit Line View	ESCAPE	ESCAPE
Exit Line View and click at character or route Dolphin Cursor to character	NUMPAD ENTER	ENTER or LEFT MOUSE BUTTON
Flip forward	ENTER	ENTER
Go to the first line	HOME	HOME
Go to the focus	NUMPAD 0	F5
Go to the last line	END	END
Increase magnification	LEFT CONTROL + NUMPAD PLUS or CAPS LOCK + MOUSE WHEEL UP	ALT + EQUALS or CAPS LOCK + MOUSE WHEEL UP
Increment X magnification	LEFT CONTROL + NUMPAD SLASH	No Assignment
Increment Y magnification	LEFT CONTROL + NUMPAD STAR	No Assignment
Line View document	LEFT CONTROL + NUMPAD PERIOD	No Assignment
Line View document area and go to focus	LEFT CONTROL + LEFT SHIFT + NUMPAD 2	No Assignment

Line View document from cursor	LEFT CONTROL + NUMPAD 2	LEFT SHIFT + ALT + L
Line View whole window	LEFT CONTROL + NUMPAD 9	LEFT SHIFT + ALT + V
Move backwards	LEFT ARROW	LEFT ARROW
Move forward	RIGHT ARROW	RIGHT ARROW
Next line	PAGE DOWN	PAGE DOWN
Previous line	PAGE UP	PAGE UP
Scroll faster	UP ARROW	UP ARROW
Scroll slower	DOWN ARROW	DOWN ARROW
Start or stop	SPACEBAR	SPACEBAR
Text smoothing	LEFT CONTROL + NUMPAD 8	No Assignment

19.10 Item Finder

Function	Desktop - Default NumPad Set	Laptop - Universal Set
Item Finder (multi tab dialog box)	CAPS LOCK + TAB	CAPS LOCK + TAB
Links	CAPS LOCK + 1	CAPS LOCK + F7
Headings	CAPS LOCK + 2	CAPS LOCK + F6
Frames or Objects	CAPS LOCK + 3	CAPS LOCK + F9
Tables	CAPS LOCK + 5	No Assignment

Controls	CAPS LOCK + 6	CAPS LOCK + F5
Revisions or Comments	CAPS LOCK + 7	LEFT SHIFT + CAPS LOCK + R
Errors	CAPS LOCK + 8	No Assignment

19.11 Quick Navigation Keys for Microsoft Word

SuperNova coding includes the following list of hot keys for supported versions of Microsoft Word. You cannot remove or reassign these keyboard commands.

19.11.1 Quick Navigation Keys

To move to the previous element use Shift + Caps Lock + Key

Move to	Hot key
Bookmark	CAPS LOCK + A
Button	CAPS LOCK + B
Comment	CAPS LOCK + C
Different paragraph style	CAPS LOCK + D
Edit form field	CAPS LOCK + E
Footnote or Endnote	CAPS LOCK + F
Graphic	CAPS LOCK + G
Heading style	CAPS LOCK + H
List item	CAPS LOCK + I
Link	CAPS LOCK + K
List	CAPS LOCK + L
Text box	CAPS LOCK + M
Normal style paragraph	CAPS LOCK + N
Object (including graphics)	CAPS LOCK + O

Paragraph	CAPS LOCK + P
Revision	CAPS LOCK + R
Table	CAPS LOCK + T
Check box	CAPS LOCK + X
Section break	CAPS LOCK + Z

Note that you may find various Quick Navigation Keys failing when working in a protected document.

CHAPTER 19

Reference

20.1 New Situation Settings dialog box

Menu: File > New > Situation Settings

You can create or choose an existing Situation by using options in the "New Situation Settings" dialog box.

Options:

- **Create New Situation radio button.**
You can create a new Situation Setting by selecting this radio button and then choosing the "OK" button. This will move you to the next step in the creation process. To review all steps in this process please refer to the "Create Situation Settings" topic.
- **Use an existing Situation radio button.**
You can change to another Situation by selecting this option and then selecting from the available list. Note the Situation list will show only those Situation Settings available in the current Application Settings file.

20.2 New Application Settings dialog box

Menu: File > New > Application Settings

You can create or choose an existing Application Settings file by using options in the Application Settings dialog box.

Options:

- Create a new settings file radio button.
You can create a new Application Settings file by selecting this option and then choosing the "OK" button. After selecting the "OK" button, you will go to the next step in the creation process. To review all steps in this process please refer to the "Create Application Settings" topic.
- Use an existing settings file radio button.
You can change to a different settings file by selecting this option and then by selecting a file from the available list. You confirm your selection by choosing the "OK" button. The settings will apply immediately unless you select the option "Use Default Settings in the control panel". If you do select this option then your new settings will apply when you go back to your application.

20.3 New Map dialog box

Menu: File > New > Map

You can create or choose an existing Map file by using options in the "Select New Map" dialog box.

Options:

- Create a new Map file radio button.
You can create a new Map file by selecting this radio button and then choosing the "OK" button. This will move you to the next step in the creation process. To review all steps in this process please refer to the "Mapping Guide". This is available through the SuperNova "Help" menu.
- Use an existing Map file radio button.
You can change to an alternative Map file by selecting this option and then selecting a file from the available list. To learn more about the reasons why you might change a Map file please refer to the "Change Map file" topic.

20.4 New Script menu item

Menu: File > New > Script

You can create a new Script file for the current application by selecting this menu item. The new Script file will open in the Dolphin Script Editor. The Dolphin Script Editor includes a "Help" menu with options linking to the Scripting Guide.

Note: If a Script file exists for the current application then this menu item will be disabled. To view and edit an existing Script file, go to the "File" menu, "Edit" sub-menu and select "Script".

20.5 Edit Situation Settings dialog box

Menu: File > Edit > Situation Settings

You can delete or change the properties of your Situation Settings by using options in the "Situation Management" dialog box. Note that you must be using the Application Settings file that has the Situation Settings to be able to edit the Situations in that file.

- Situation list.
You can choose the Situation you want to edit or delete from this list.
- Edit Rules button.
You can edit the rules of a Situation by selecting this button. This will open the "Define Situation Rules" dialog box. In this dialog box you can change the name of the Situation, change the title and class details of the Situation rule and add and remove Situation rules.
- Delete button.
You can delete the current Situation from your Application Settings file by selecting this button. After selecting the button you will receive a warning message asking you to confirm that you want to proceed. To proceed select the "Yes" button or to cancel select the "No" button.

20.6 Edit Application Settings dialog box

Menu: File > Edit > Application Settings

You can delete or change the properties of your Application Settings file by using options in the "Settings File Management" dialog box.

- Application Settings file list.
You can choose the Application Settings file you want to edit or delete from this list. Note that you cannot delete the "Default Application" settings file because this is a SuperNova system file.
- Properties button.
You can edit the properties of an Application Settings file by selecting this button. This will open the "Settings File Properties" dialog box. In this dialog box you can change the name and version number of the settings file and add and remove any the applications associated with the file.
- Delete this settings file button.
You can delete the current Application Settings file by selecting this button. After selecting the button you will receive a warning message asking you to confirm that you want to proceed. To proceed select the "Yes" button or to cancel select the "No" button.

20.7 Edit Map dialog box

Menu: File > Edit > Map

You can edit the properties and rules of a Map file by selecting this menu item. To learn more about Map files please refer to the Mapping Guide available from the "Help" menu of the SuperNova control panel.

This dialog box also contains Script options. You can create, reload, edit and delete Script files and Extension Script files. To learn more about Script files please refer to the Scripting Guide. You can open the Scripting Guide from the SuperNova control panel "Help" menu.

20.8 Edit Script menu item

Menu: File > Edit > Script

You can edit the Script file for the current application by selecting this menu item. The Script file will open in the Dolphin Script Editor. The Dolphin Script Editor includes a "Help" menu with options linking to the Scripting Guide.

Note: If no Script file exists for the current application then this menu item will be disabled. To create a new Script file, go to the "File" menu, "New" sub-menu and select "Script".

20.9 Visual Configure Custom Colour Scheme dialog box

Menu: Visual > Colour Schemes > Configure.

You can create your own colour scheme by using options in the "Configure Custom Colour Scheme" dialog box.

Note: To open this dialog box you must choose "Custom" as your Colour Scheme and then choose "Configure" from the list of Colour Schemes.

You can create a custom scheme in this dialog box using one of the following options:

- Classic
- Tint
- Dual Tint
- Treble Tint
- Quad Tint

- Colour Replacement

The controls available in this dialog box change depending on the custom setting you have chosen.

20.9.1 Classic custom colour scheme options.

- Invert brightness check box.
This option inverts the brightness of the screen, turning a typically dark on light screen to a light on dark screen. This option does not affect the amount of colour on the screen.
- Contrast slider.
The "Contrast" slider controls colour definition, making light colours lighter and dark colours darker. This changes the screen in a similar way to the Contrast button you find on a television.
- Brightness slider.
The "Brightness" slider controls how bright the colours appear on the screen, making light colours more luminous and dark colours darker. This changes the screen in a similar way to the Brightness button you find on a television.
- Luminance Split slider.
The luminance Split is the position in the colour spectrum where light and dark colours divide. Moving the slider to the left means more of the colours in the spectrum are classified as being in the lighter spectrum. This influences the contrast and brightness values.
- Colour Adjust slider.
The "colour adjust" slider allows you to make general changes to screen colours with the exception of white and black. You can use the colour palette to view the changes that occur as you move the slider. A slider position of 0% means screen colours are unchanged.
- Colour slider.
The "Colour" slider allows you to control how much colour is on the screen. Changing this value means colours either become paler or

more intense. You can use the colour palette to view the changes that occur as you move the slider. A slider position of 50% means screen colours are unchanged.

- Preview these colour settings when in this dialog box check box. Select this check box to see your changes occur as you make them.

20.9.2 Tint, Dual Tint, Treble Tint and Quad Tint custom colour options:

- Invert brightness check box.
This option inverts the brightness of the screen, turning a typically dark on light screen to a light on dark screen. This option does not affect the amount of colours on the screen.
- Contrast slider.
The "Contrast" slider controls colour definition, making light colours lighter and dark colours darker. This changes the screen in a similar way to the Contrast button you find on a television.
- Brightness slider.
The "Brightness" slider controls how bright the colours appear on the screen, making light colours more luminous and dark colours darker. This changes the screen in a similar way to the Brightness button you find on a television.
- Luminance Split slider.
The Luminance Split is the position in the colour spectrum where light and dark colours divide. Moving the slider to the left means more of the colours in the spectrum are classified as being in the lighter spectrum. This influences the contrast and brightness values. When using Treble Tint and Quad Tint, additional contrast boundary sliders are available to define the boundary for the colours in the middle colour ranges.
- Level slider.
The "Level" slider allows you to control how intense the tint colour is applied to the screen. A value of 100%, where the slider is positioned

to the right, means the tint colours completely replace the current screen colours. A value of 25% means the tint colours will be blended with the original screen colours at a ratio of 25:75, which creates a screen with more shades.

- Tint colour list boxes.
You will be able to choose from one to four different colours depending on whether you have chosen "Tint", "Dual Tint", "Treble Tint" or "Quad Tint". The colours you choose become the primary colours for the colour spectrum relative to the Luminance Split.
- Preview these colour settings when in this dialog box check box.
Select this check box to see your changes occur as you make them.

20.9.3 Colour Replacement custom colour scheme options:

- Invert brightness check box.
This option inverts the brightness of the screen, turning a typically dark on light screen to a light on dark screen. This option does not affect the amount of colours on the screen.
- Contrast slider.
The "Contrast" slider controls colour definition, making light colours lighter and dark colours darker. This changes the screen in a similar way to the Contrast button you find on a television.
- Brightness slider.
The "Brightness" slider controls how bright the colours appear on the screen, making light colours more luminous and dark colours darker. This changes the screen in a similar way to the Brightness button you find on a television.
- Luminance Split slider.
The Luminance Split is the position in the colour spectrum where light and dark colours divide. Moving the slider to the left means more of the colours in the spectrum are classified as being in the lighter spectrum. This influences the contrast and brightness values.

- From and To list boxes.
The "From" and "To" list boxes allow you to replace one colour with another colour. Use the list boxes to make one or multiple colour replacements.
- Preview these colour settings when in this dialog box check box.
Select this check box to see your changes occur as you make them.

20.10 Visual Highlighting Options dialog box

Menu: Visual > Highlighting > Settings

You can make different types of focus easier to see by adding a highlight indicator. You can choose the style, colour and behaviour of the highlight in the "Highlighting Options" dialog box.

Mouse tab.

- Highlight the mouse check box.
Select this check box to turn on the highlighting of this focus. Deselect this check box to turn off the highlighting of this focus.
- Display group.
 - Use the "Shape" settings to change the shape and size of the highlighting.
 - Use the "Show" list box to control when the highlight is visible. Note that selecting "On hot key" means you control the highlight using the Foci Highlights hot key and selecting "Dynamic tracking" means the mouse highlight stays visible until you press a key on the keyboard.
- Effects group.
You can choose from different colour options. Depending on the option you choose you can also control the colour(s) and/or the transparency.

Cursor tab.

- Highlight the Cursor check box.
Select this check box to turn on the highlighting of this focus. Deselect this check box to turn off the highlighting of this focus.
- Display group.
 - Use the "Shape" settings to change the shape and size of the highlighting.
 - Use the "Show" list box to control when the highlight is visible. Note that selecting "On hot key" means you control the highlight using the Foci Highlights hot key and selecting "Dynamic tracking" means the Cursor highlight stays visible until SuperNova is tracking a different type of focus, for example, the mouse.
- Effects group.
You can choose from different colour options. Depending on the option you choose you can also control the colour(s) and/or the transparency.

Line tab.

- Highlight the Line check box.
Select this check box to turn on the highlighting of this focus. Deselect this check box to turn off the highlighting of this focus.
- Display group.
 - Use the "Shape" settings to change the shape and size of the highlighting.
 - Use the "Show" list box to control when the highlight is visible. Note that selecting "On hot key" means you control the highlight using the Foci Highlights hot key and selecting "Dynamic tracking" means the Line highlight stays visible until SuperNova is tracking a different type of focus, for example, the mouse.
- Effects group.
You can choose from different colour options. Depending on the

option you choose you can also control the colour(s) and/or the transparency.

Focus tab.

The term "Focus" refers to the focus used in dialog boxes and menus.

- Highlight the Focus check box.
Select this check box to turn on the highlighting of this focus. Deselect this check box to turn off the highlighting of this focus.
- Display group.
 - Use the "Shape" settings to change the shape and size of the highlighting.
 - Use the "Show" list box to control when the highlight is visible. Note that selecting "On hot key" means you control the highlight using the Foci Highlights hot key and selecting "Dynamic tracking" means the Focus highlight stays visible until SuperNova is tracking a different type of focus, for example, the mouse.
- Effects group.
You can choose from different colour options. Depending on the option you choose you can also control the colour(s) and/or the transparency.

Read From Here tab.

Read From Here is a SuperNova reading mode. You can change highlighting options for the current word and the current line being read.

- Word group.
You must select "Highlight the spoken word" check box to turn on this highlighting option. Use the available settings to set how the spoken word is highlighted.
- Line group.
You must select "Highlight the line" check box to turn on this

highlighting option. Use the available settings to set how the current line being spoken is highlighted.

Dolphin Cursor tab.

The Dolphin cursor is a special kind of cursor created by SuperNova. The Dolphin Cursor allows you to read the contents of the screen line by line, or word by word, or letter by letter using your keyboard. You can use the Dolphin cursor to review any part of your computer's screen.

- **Current Character group.**
You must select "Highlight the character" check box to turn on this highlighting option. Use the available settings to set how the character is highlighted.
- **Current Line/Object group.**
You must select "Highlight the line" check box to turn on this highlighting option. Use the available settings to set how the current line is highlighted.

20.11 Visual Mouse Pointers dialog box

Menu: Visual > Mouse Pointers

Available with SuperNova are mouse pointers that are larger and easier to see than the usual Windows mouse pointers. The pointers are available in a range of different colours and sizes.

Options:

- **Scheme list.**
You can choose an existing Mouse Pointer scheme from this list. If no existing scheme is suitable, use the other options to create a new scheme or modify an existing scheme.
- **Type list and Pointer Image list.**
The "Type" list shows the different pointers in Windows and the

"Pointer Image" list shows the different images you can apply to the selected pointer type. To change a pointer, select the type of pointer and then choose a pointer from the images provided.

- **New button.**
Pressing the "New" button will open the "Create New Scheme" dialog box. In this dialog box, you enter a new name for the scheme. The new scheme name appears in the "Scheme" list.
- **Restore to defaults button.**
If you have modified a default SuperNova scheme, then selecting this button will return the scheme back to the SuperNova default pointers for the scheme.
- **Delete button.**
If you have created a new scheme, then pressing this button will open a message window asking you to confirm that the scheme is to be deleted. Choose "Yes" to delete the scheme or "No" to cancel.
- **Custom pointer size group.**
The options in this group allow you to adjust the size of the mouse pointers in the current scheme, relative to their default size.
 - **Use custom pointer size check box.**
If you select this check box the value in the "Size" list will apply to all pointers in the current scheme.
 - **Size list.**
The "Size" list contains a range of values you can apply to the pointers in your current scheme. You can choose a fixed size, for example 8, which will increase the pointers to 8 times their original size. When a fixed value is chosen, the pointers will remain at the same size regardless of what magnifier size you have set.
Alternatively, you can choose a value relative to your magnification level, for example 150%. With a relative value, the pointer size will adjust as you increase or decrease your magnification size. At higher magnification levels you may find the fixed pointer size occupies too much of the screen, so you may benefit from choosing a relative pointer size smaller than the original size.

- Use custom pointer in magnified areas only check box.
If you select this check box then the custom pointer size is only visible in magnified areas. It is not visible when you turn off the Magnifier or view the unmagnified screen in Views such as Split Screen.

20.12 Visual Doc Reader Settings dialog box

Menu: Visual > Doc Reader Settings

The options available in the "Doc Reader Settings" dialog box control the Doc Reader reading environment. You can open this dialog box by selecting the item in the "Visual" menu or by selecting the "Settings" button from the Doc Reader toolbar.

Options:

- Font settings.
In the Doc Reader you can define the font that is used to display the text within the document window. You can also state the font size to use.
- Colour settings.
You can define the colours to use in the document window. There are three categories to which you can apply a foreground and background colour too.
 - Document colours sets the background and foreground colours used in the document window. However, if "Use document colours" is selected then this setting will not be applied.
 - **Word highlight colours** sets the background and foreground colours used by the Doc Reader for the current focus. This shows the currently selected word as the Doc Reader reads through the document. However, if "Invert word" is selected then this setting will not be applied. Instead the highlight will be inverted based on the custom colour settings.

- **Unit highlight colours** sets the background and foreground colours for your specified unit of movement. This is what is highlighted as you cursor down through a document.
- Fetch whole document check box.

With the "Fetch whole document" check box selected you will load the complete document into the Doc Reader. Depending on the size of the document, this may take a few seconds. This option is only supported in DOM enabled applications such as Microsoft Word, Adobe Acrobat Reader, Internet Explorer, NotePad, WordPad, etc. It is also possible to specify the number of lines you want to fetch by unselecting the "Fetch whole document" check box and then specifying the number of lines from the available spin control. This will allow you to load a section of a document faster.

If you are working in an application that does not include DOM support then the Doc Reader will load the content from the current screen.
- Invert word check box.

With the selection of the "Invert word" check box the focus highlighting will be an inverted highlight based on the document colours specified or based on the actual document's colours depending on what is currently enabled.
- Doc Reader speech check box.

With this option selected the document will be read using your selected "Read From Here voice" stated in the "Voice and language" dialog box. You can disable speech output in the document window by deselecting this check box.
- Use document colours check box.

Selecting this check box will mean that the Doc Reader will use the colours specified in the document instead of its own custom colours.
- Use document styles check box.

Selecting this option will mean styles used in the document will appear in the Doc Reader.

- **Wrap line to. list.**
The "Wrap line to" option can be used to insert a line break on a line if it exceeds a particular length. This can be useful if lines are scrolling outside the current window.
To disable this feature set the "Wrap line to" value to 0.
- **Doc Reader speed slider.**
The "Doc Reader speed" slider determines the reading speed for the document.

20.13 Visual Connect and View Settings dialog box

Menu: Visual > Connect and View > Settings

The "Connect and View Settings" dialog box contains options you can use to change how SuperNova works with a camera and a whiteboard.

Cameras tab.

- **Devices list and controls.**
Use this list to select a camera to use with SuperNova. Set the value to "Off" if you want to prevent the selection of a camera when you switch between devices. Use the "Settings" button to optimise the camera performance. These options will differ between camera models. The following options are available:
 - **Resolution list.**
This lists available resolutions for your connected camera. Increasing the Resolution should improve the picture quality shown in the viewer.
 - **Frame Rate list.**
This is listed as frames per second (FPS). The higher FPS means frequently changing images appear smoother whereas lower FPS can decrease the amount of camera wobble detected, which may bring a better document reading experience.
 - **Anti Flicker list**
This lists 50Hz which is usually selected for Europe and the UK and

60Hz usually selected for America and Japan. Selecting the correct Hz will eliminate flicker caused by florescent lighting that can interfere with a camera image.

- Automatic Focusing check box.
If you find the Auto Focus regularly refocusing then you may wish to turn this feature off. Not all cameras include an Auto Focus feature. SuperNova will only make the Auto Focus check box available if the camera supports this feature.
- Colour Scheme list.
Use this option to apply a default colour scheme to the camera viewer. Additional options are also available in the camera viewer to control the Colour Scheme setting.

Whiteboards tab.

- Devices list and controls.
Use this list to create, edit or delete a device profile. Set the value to "Off" if you want to prevent switching to a whiteboard device. Use the "New" button to create a new profile. Use the "Settings" button to edit a profile. The following additional options are available when you create or edit a profile:
 - Profile box.
Use this box to give the device a meaningful name. You may want to name the device after the classroom, teacher or trainer to make it easy to select it in the future. Note that the remaining options in this dialog box may require information from a Network Administrator.
 - Machine Name box.
Use this box to enter in the name of the host computer as it appears on the network. Alternatively, you can also enter in the host computer's IP address, however, this is not recommended because of the dynamic assignment of IP addresses under most network configurations.
 - Port box.
By default, Virtual Network Computing (VNC) uses port 5900. You

should only change this setting if directed to do so by your Network Administrator.

- Password box.
Use this box to enter in the password that allows you to connect to the host computer. The assignment of a password is optional and is set in the VNC software. Your Network Administrator will be able to provide you with this information.
- Connection Type radio buttons.
Use these controls to select the option that matches your type of network connection. You can choose between a local area network (LAN) connection and a wireless connection.
- Protocol list.
There are a number of Remote Frame Buffer (RFB) protocols available that are supported by VNC. You should only change this setting if directed to do so by your Network Administrator.
- Show Mouse check box.
Use this setting to control whether the mouse pointer on the host computer appears in your viewer. You may want to enable this option if you want to see where the mouse pointer is being positioned on the screen. You may want to disable this option if the presence of the mouse pointer is a distraction.

The additional options in the "Connect and View Settings" dialog box are general settings and apply to all whiteboard interaction, irrespective of the chosen device.

- Colour Scheme list.
Use this option to apply a default colour scheme to the whiteboard viewer. Additional options are also available in the whiteboard viewer to control the Colour Scheme setting.
- Track presenter's position on whiteboard check box.
Use this option to control the tracking of the focus on the host computer. The disabling of this option means that you control the movement around the window. You can move around the window by using the mouse pointer or by panning around the screen with the keyboard.

20.14 Visual Multiple Monitors dialog box

Menu: Visual > Multiple Monitors

You choose the multiple monitor options in the Multiple Monitors dialog box.

To use multiple monitors, SuperNova requires a graphics card attached to the computer motherboard, such as an AGP/PCI or PCIe graphics card. The use of USB graphic card adapters is not supported.

Options:

- Display Mode for Spare Monitors group.
The options in this group allow you to choose a multiple monitor setup on computer's where you have chosen not to extend your desktop in the Windows display options.
 - Single radio button.
You can use this option if you only wish to use a single monitor.
 - Span radio button.
You can choose this option if you wish to use two monitors to behave as one large monitor. In this scenario, one single desktop will span across both monitors and you can freely pan the magnification across both monitors in the same way as you would with one monitor.
 - Clone radio button.
You can use this option to display the same output on all monitors attached to the computer. All magnification and associated visual settings will be the same on all monitors.
 - Clone with standard view radio button.
You can use this option to display the magnified output on the primary monitor, with all other monitors displaying a standard unmagnified screen. This can be useful in training situations where another operator can view a screen without any visual effects to get an overview of the entire display.

- **Enable colour Scheme checkbox.**
If you select this option when in Clone with Standard view, the monitors displaying the unmagnified view will also show the Colour Scheme in use.
- **Enable focus highlighting on extended desktop checkbox.**
If you select this option when in Clone with Standard view, the monitors displaying the unmagnified view will also show any Focus Highlighting options in use.
- **Display mode for extended desktop group.**
You can use the options in this group to choose the most appropriate setup for computers where the desktop has been extended onto additional monitors. Note that you must select "Single" in the "Display Mode for Spare Monitors" group to be able to extend the desktop in the Windows Display Settings.
 - **Span radio button.**
You can choose this option if you wish to use two monitors to behave as one large monitor. In this scenario, one single desktop will span across both monitors.
 - **Side by side applications radio button.**
You can use this mode to display different applications on different monitors. When working with side by side applications the following hot keys are of help:

Function	Hot key
Jump mouse pointer to the middle of the next monitor	CAPS LOCK + MIDDLE MOUSE BUTTON
Move application to right monitor	WINDOWS Logo Key + SHIFT + RIGHT ARROW
Move application to left monitor	WINDOWS Logo Key + SHIFT + LEFT ARROW

- Presentation Mode check box.
You use this option to have one monitor showing a magnified screen and all the remaining monitors showing an unmagnified screen. For example, this will allow you to work on a magnified screen while an audience viewing a presentation slide show on the second monitor will see an unmagnified screen.
- Mouse Buffer check box.
You can use this option to prevent the accidental movement of the mouse pointer onto another monitor when you are using an extended desktop. You achieve this by creating a level of resistance at the screen edge, which means you require additional force to move the mouse pointer onto another monitor. You can adjust the level of resistance the buffer creates by using the "Resistance" slider.
- Resistance slider.
You control the mouse buffer resistance using this slider. The higher the level the greater the resistance, which means you have to hold the mouse pointer against the edge of the screen for longer to move from monitor to monitor.
- Switch monitor hot key list.
When working with "Side by side" applications on an extended desktop, you may wish to move the mouse pointer quickly from one monitor to the next, without panning the magnification away from the area of the screen you are currently viewing. To do this, you can use the "Switch Monitor" hot key. The default hotkey to switch between monitors is CAPS LOCK + MIDDLE MOUSE BUTTON.
- Add Key, Replace Key and Remove Key buttons.
You can use these buttons to change the "Switch monitor" hot key.

20.15 Visual Advanced Options dialog box

Menu: Visual > Advanced Options

You can specify settings for a variety of SuperNova features by selecting options in the "Visual Advanced Options" dialog box.

General Preferences tab

- **Highlight Hot Key Action group.**
Visual Highlights can be set to appear in a number of different ways. One of these ways is to show the selected Highlights when a hot key is pressed. How the hot key behaves when pressed is determined by the "Show Highlight" list box. This can be set to "Until Hot Key pressed again" or "Until Hot Key released".
- **Fractional Magnification group.**
The "Allow fractional magnification" check box determines whether increases in the size of magnification will include fractional values. If you turn fractional magnification off, nothing will immediately change. Only after the next magnification adjustment will the factor move to the nearest linear factor.
If you experience issues when using fractional magnification sizes then options are available to try and improve performance.
- **Overview Mode group.**
The settings in this group determine how the Magnifier position is displayed on the screen when in Overview Mode. The magnified area can be inverted or the background can be inverted. In this group settings also determine the behaviour of the Overview Mode hot key. This can be set to "Until Hot Key pressed again" or "Until Hot Key released".
- **Video Compatibility button.**
This button will open the "Video Compatibility" dialog box. This dialog box contains a number of check boxes for optimising the speed of the

magnification and resolving screen corruption problems caused by non-compliant video drivers.

Magnifier tab.

- Lock Aspect check box.
If the "Lock Aspect" check box is unselected then you will have two spin controls that will allow you to adjust the horizontal and vertical magnification size independently. If you turn lock aspect ratio back on, the magnification factor will change to the average of the horizontal and vertical factors. Note that True Fonts is unsupported when working with a different horizontal and vertical magnification size.
- Font Smoothing group.
Font smoothing improves the legibility of the text on the screen when you use magnification. Options include:
 - None radio button.
Choose "None" to turn off Font Smoothing.
 - Standard radio button.
Choose "Standard" for basic font smoothing. Use this option if you are experiencing performance issues using True Fonts.
 - True Fonts radio button.
Choose "True Fonts" for perfect clarity at all magnification sizes. You may wish to experiment with the True Font Settings if you are using a magnification size of 3x or lower or you are using an LCD monitor.
- True Fonts Settings group.
 - Standard radio button.
Using "Standard" renders text in a non-antialiased mode. This is the default and fastest method, especially when using a magnification size of 4x or greater.
 - Antialiased radio button.
This setting renders the text and smooths the text edges. If you experience jagged effects using True Fonts at a low magnification size then you should select this option.

You can switch between "None", "Standard" and "True Fonts" by using a SuperNova hot key.

Magnifier Hot Keys

Function	Desktop - Default NumPad Set	Laptop - Universal Set
Font Smoothing	LEFT CONTROL + NUMPAD 8	No Assignment

Note that True Fonts is unavailable if you are using a different vertical and horizontal magnification ratio. You can independently change the vertical and horizontal magnification size by deselecting the "Lock Aspect" check box in the "Visual Advanced Options" dialog box.

Tracking tab.

- Mouse tracking group.

In this group the "Track mouse pointer" check box controls whether SuperNova follows the mouse pointer. When tracking the mouse pointer the window will scroll whenever the mouse is moved beyond the mouse frame. The distance that it moves will normally be just enough so that the mouse ends up at the edge of the screen or margin. To adjust the mouse frame, press the mouse frame button. This takes you to the Mouse and Foci Frame Dialog Box.

The "Move mouse pointer into view" check box determines what happens when the mouse pointer is currently not visible inside the magnified window. With this option selected, when the mouse pointer is initially moved, the mouse pointer will be brought to the centre of the magnified window. If this option is unselected then the magnified window will be moved to the mouse pointer's location on the screen. If the "Stay in window" check box is selected, artificial mouse boundaries are created around the currently selected window. This places a restriction on the mouse pointer so the display does not easily move away from the current window. These mouse boundaries are removed if you move the pointer beyond the edge of the window.

- **Cursor tracking group.**
The "Track Cursor" check box controls whether the Magnifier follows the beam cursor inside edit areas. If this checkbox is selected, the magnified window will move to show the area around the cursor as it moves. The Cursor Frame (the minimum distance between the beam and the edge of the screen) can be set in the Caret Frame dialog box by pressing the "Cursor Frame" button.
- **Focus tracking group.**
In this group you can state whether the Magnifier tracks other types of objects. Available options are menus, controls and windows. The "Keep focus in centre" check box sets whether any windows that are being tracked such as menus and small dialog boxes are to be centred in the magnified window if they fit. If "Keep focus in centre" is not selected the display will move the minimum amount possible to make the object completely visible.

Line View tab.

Line View is a SuperNova reading mode. In this mode the content of the visible screen is shown as a single line scrolling across the screen. Line View lets you control background and text colour, text size and what font to use.

Hooked Areas tab.

Hooked Areas allow you to keep a particular area of the screen permanently displayed. This lets you keep an eye on important information that may frequently change as you use your application.

20.16 Speech Voice Preferences dialog box

Menu: Speech > Voice Preferences

You can change various Voice settings in the "Voice Preferences" dialog box.

General tab.

- Volume spin control.
Use the "Volume" spin control to change how loud the voice sounds. This value is independent to the computer's own volume setting.
- Speed spin control.
Use the "Speed" spin control to change how fast the voice reads.
- Spelling Speed spin control.
Use the "Spelling Speed" spin control to select how fast characters are spelt. You may wish to set this to a speed lower than your normal reading speed to make the spelling of words easier to understand.
- Increase voice pitch for spelt capitals check box.
Select this check box to have your reading voice rise in pitch when spelling a capital letter. Examples when you are spelling characters include when you have Character Echo set to echo each character you type, when you move across a line of text a character at a time and when you delete a character. Note that this item will not be available if your current synthesiser does not support this option.

Synthesiser Configuration tab.

- Select Synthesiser button.
Choose this button to open the "Select Synthesiser" dialog box. This dialog box lists all synthesisers detected by SuperNova. If the only option in the list is 'no Speech Device' then this means there are no configured speech synthesisers to choose from. Check that your synthesiser is configured correctly and make sure it is detected by Dolphin SAM. This is done by choosing "SAM Setup" in the "General Advanced Options" dialog box.
- Configure button.
The configure button will open the Driver Configuration dialog box for the synthesiser currently in use.

- Language Configuration list box and Set Language for button.
Not all speech synthesisers are able to return information about which language or languages they have available. If SuperNova determines that this is the case, you can use the language configuration box to set the language. If SuperNova detects the language then the options will be disabled.

Voice and Language Configuration tab.

The "Voice and Language Configuration" property sheet lets you choose different voices for different speech contexts. A speech context is a special attribute of the text to be spoken which indicates where it came from or what SuperNova feature you are using.

You may find it useful to have different voices for different contexts. This can help remind you what feature you are using or the type of control currently being used.

The set of voices that are chosen here, and which are currently defined are saved automatically on a per-synthesiser basis. This means that if you change synthesiser you will have a different set of voices, but the voices for your first synthesiser are saved and will be used again if you switch back to your original synthesiser.

The options in this property sheet are:

- Screen Reader group.
In this group you set the Screen Reader "Language" and "Voice". This reflects the language and voice SuperNova will use to speak prompts. A prompt is something that is spoken which is not taken from the screen. Usually, your screen reader language will match your Access System Language.
- Screen group.
This group lets you set the synthesiser language and voice that is to be used to read text from the screen.
You can choose which voice is to be used to read the text from the

screen when you are in an edit area, prompt area (e.g. dialog box), a menu, or when reading text under your mouse.

You can also use a different voice when a SuperNova feature is being used. This will override any other voice chosen for any other area.

Each of the individual voice list boxes also contains a "No Voice" option if you wish to disable speech output for that particular type of area.

- Automatic language switching group.

The options in this group lets you control automatic language switching. Automatic language switching changes the synthesiser language to match particular alphabetic scripts; making screen reading a more fluent experience.

If you have the appropriate synthesiser language installed, you can automatically switch between many languages including Latin, Arabic, Chinese (Mandarin), Greek, Hebrew, Hindi (Devanagari) and Russian (Cyrillic) scripts.

Note that not all synthesisers support this feature. To learn more about available synthesiser languages please contact Dolphin or your local Dolphin dealer.

- Load All Default Voices button.

Pressing the "Load all Default Voices" button sets all voices back to the synthesiser's default value.

User defined voices tab.

This property sheet is used to create and modify the speech synthesiser voices. You can define your own voices or edit the existing ones. Each voice consists of a name and number of synthesiser parameters. The actual number of synthesiser parameters, their meaning and possible range of values depend upon your synthesiser.

The options in this property sheet are:

- Language list box.

Use this list box to state what language the new voice is to be based

upon or what language the existing voice that you want to modify can be found in.

- **Voice list box.**
The Voice pull-down list box displays a list of all the currently available speech synthesiser voices. Choose the voice that you wish to edit or delete from this list.
- **Add, Delete and Rename buttons.**
These buttons let you either create a new voice, delete the currently selected voice or rename the currently selected voice.
- **Parameters group box.**
The options in this group box set the basic speech characteristics of the voice. This is the pitch and intonation.
- **Other Speech Parameters group box.**
This group box contains other more synthesiser-dependent settings. These parameters are in a pull-down list entitled "Parameter". Each parameter has a value that can be adjusted in the "Value" list box.
- **Test text edit area.**
The test text is an edit area which contains some text. This text is read out every time you change the value of a voice parameter. You can edit this text and put in anything you like. This test text lets you change parameters and hear what they sound like without the risk of changing the voice to something that you can't understand, which could occur if you were editing the same voice you were using.
- **Load Default Voices for Current Language button.**
This button loads the default set of voices from the synthesiser. The actual set of voices depends upon your synthesiser. The voice names used will depend upon your current access system language.

The voices defined here are unique to SuperNova. They will not appear in any other program that uses the same synthesiser.

20.17 Speech Character Echo dialog box

Menu: Speech > Character Echo

The "Character Echo" dialog box sets what is to be spoken as you type. You can have characters, words, both characters and words or nothing spoken.

20.18 Speech Text Style Announcements dialog box

Menu: Speech > Text Style Announcements

You can specify settings for punctuation announcement, number announcement and text attribute announcement by selecting options in the "Text Style Announcements" dialog box. This dialog box has multiple tabs, dividing settings into different contexts.

Contexts:

- Edit Areas tab has settings you can apply to text in any control designed for text input; where you can view, enter, or edit text or numbers. Examples include the document window in a wordprocessor, a text box on a web page or an entry field in an address book.
- Prompt Areas tab has settings you can apply to all areas with the exception of edit areas and menus. Examples include field labels in dialog boxes, message windows and worksheets.
- Menus tab has settings you can apply to menus.
- Read From Here tab has settings you can apply to this SuperNova continuous reading mode.

Settings:

- Punctuation Level list.
SuperNova groups punctuation characters into specific categories.

You can change how much punctuation is announced by SuperNova by changing the punctuation level.

- Number Announcement group.
You can read numbers as digits, pairs or words. If you select "Digits" then SuperNova will spell each number, for example, one, two, three, four. If you select "Pairs" then SuperNova will read numbers as a two digit value, for example, twelve, twenty three. If you select "Words" then SuperNova will read numbers in full, for example, one thousand, two hundred and twenty three.
- Announce group
 - Blank lines check box.
You can have SuperNova tell you when the focus is on a blank line by selecting this check box. This option applies specifically to edit areas.
 - Capitals check box.
You can have SuperNova tell you when a capital letter is being used by selecting this check box. You choose how SuperNova indicates capitals by choosing settings in the "Voice Preferences" dialog box and "General Announcements" dialog box.
 - Repeats check box.
You can change how SuperNova reads repeating characters by selecting this check box. This applies to punctuation characters and symbols and excludes letters and numbers. You control the method SuperNova uses to indicate repeated characters by choosing settings in the "Repeats" dialog box.
 - Selected check box.
You can have SuperNova tell you about selection changes by selecting this check box. For example, if you select one word in a line of text and then press the Read Line hot key, SuperNova will announce the selection change.

20.19 Speech General Announcements dialog box

Menu: Speech > General Announcements

You can specify settings for a variety of SuperNova features by selecting options in the "General Announcements" dialog box. The availability of some options depends on the synthesiser you are using.

- **Announce magnification changes check box.**
You can announce the changes you are making to magnification settings when you are using hot keys by selecting this check box. This includes turning on the Magnifier, changing Magnifier View, changing Split Screen orientation, Magnifier Size and turning on your Colour Scheme.
- **Announce 'no focus detected' check box.**
You can have SuperNova announce when an application loses focus by selecting this check box. An example when an application might lose focus is when closing a foreground window fails to place the focus in the background window. You can usually resolve this loss of focus by pressing ALT + TAB to switch to an open application or by pressing WINDOWS KEY + D to place focus on the Desktop.
- **Announce text under mouse check box.**
You can have SuperNova read the text under the mouse pointer by selecting this check box. To read the text requires you to move the mouse pointer to the place where the text is on the screen.
- **Announce capitals when reading lines check box.**
You can include capital announcements when you read a line of text by selecting this check box. You are reading a line of text when you are moving focus to a new line, for example, by using keys like UP ARROW, DOWN ARROW, PAGE UP and PAGE DOWN.

Note: To turn on capital announcement you must select the "Capitals" check box in the "Edit Areas" tab of the "Text Style Announcements" dialog box.

- Use Beeps for Capital Announcement check box.
By default, SuperNova will describe capital letters by using words. Using words is a method all synthesisers support. However, it is also possible with some synthesisers to indicate capitals with a sound. If this option is available, you can use beeps to indicate capitals by selecting this check box.
- Uses sound list.
If you select the "Use Beeps for Capital Announcement" check box then you can choose the sound you would like to use to indicate capitals from this preset list.
- Repeats button.
You can open the "Repeats" dialog box by selecting this button. The "Repeats" dialog box lets you control how SuperNova reads repeating characters.

20.20 Speech Advanced Options dialog box

Menu: Speech > Advanced Options

You can specify settings for a variety of SuperNova features by selecting options in the "Speech Advanced Options" dialog box.

Cursor tab.

- Use Dolphin Cursor automatically check box.
This setting lets you turn the automatic Dolphin Cursor on or off. The automatic Dolphin Cursor is a special feature that may be programmed in as part of a Map file. The Map file can set areas to automatically use the Dolphin Cursor when the keyboard focus moves to certain parts of your application. This is useful when no application focus exists in the designated window.
You can turn on and off the automatic Dolphin Cursor behaviour with a hot key. To toggle automatic Dolphin Cursor on and off press LEFT CONTROL + 4.

- **Restrict Dolphin Cursor to current area CHECK BOX.**
The Dolphin Cursor can be restricted in its movement so that it cannot move outside the current area. This behaviour is set in a Map file. This check box determines whether the Dolphin Cursor should be restricted to the current area or not.
You can use a hot key to turn on and off this restriction. To toggle this option on and off press LEFT CONTROL + 2. Note that this setting will only become active the next time you turn the Dolphin Cursor on.
- **Auto Forms Mode check box.**
When this check box is selected you will be automatically switched into Forms Mode when you TAB onto an input Field. This enables you to fill in forms more easily using the Dolphin Cursor. A hot key can also be used to toggle this feature. Press CAPS LOCK + ENTER to toggle automatic Forms Mode on and off.

20.21 Media Scan and Read Settings dialog box

Menu: Media > Scan and Read > Scan and Read Settings

The "Scan and Read Settings" dialog box contains options you can use to change how SuperNova saves and converts scanned documents.

Options.

- **Scanner list.**
The "Scanner" list shows the list of scanners available on the computer. You must ensure the selected scanner matches the scanner you are using with SuperNova.
- **Language list.**
The "Language" list refers to the language of the text you are scanning. If you are scanning text in a foreign language then, for best results, you must ensure this setting matches the language of the text being scanned.

- **Colour list.**
The "Colour" list allows you to change the colour setting for the scanner. For best results, ensure the value as closely matches the print colour being scanned, for example, if you are scanning a plain letter then using "Black and white" will bring the most accurate recognition.
- **Paper list.**
The "Paper" list relates to the size of paper you are scanning. For best results, ensure the paper size matches the size you are scanning.
- **Scan and Read Output Folder box.**
This edit box states the location where SuperNova saves the converted documents. Use the browse button to change the folder location.

20.22 General Startup Preferences dialog box

Menu: General > Startup Preferences

You can specify settings for a variety of SuperNova features by selecting options in the "Startup Preferences" dialog box. The availability of some options depends on the synthesiser you are using and whether you are running a local, network or Dolphin Pen version of SuperNova.

Options

- **Launch SuperNova after logon check box.**
You can set your computer to automatically run SuperNova after you log into your user account by selecting this check box.
- **Disable splash screen at startup check box.**
You can stop the SuperNova splash screen showing by selecting this check box. A splash screen is an image that appears while a computer program is loading.

- Magnifier at user logon check box.
You can magnify the Windows Logon Screen by selecting this check box. After selecting this check box, the next time you restart your computer you will have a SuperNova toolbar showing on the Windows Logon Screen. You can use the mouse to click the toolbar buttons to adjust magnification or press F7 to reduce magnification and F8 to increase magnification.

Note: Magnification at the Windows Logon Screen is only possible by having a SuperNova component running as a Windows service. You cannot run a full program at the Windows logon screen because of Windows security restrictions.

- Show magnification buttons at logon check box.
You can hide the SuperNova toolbar that appears at the Windows Logon Screen by deselecting this item.
- Announce when loaded check box.
You can announce "SuperNova loaded" when SuperNova finishes loading by selecting this check box.
- Load all SAM drivers at startup check box.
You can have SAM check for all supporting devices each time it starts by selecting this check box. Note that this can make the launching of SuperNova slower because it waits for SAM to complete its detection process. You should only select this check box if you are regularly changing your output devices.
- Always save user settings check box.
By default, SuperNova will automatically save changes you make to SuperNova settings. You can prevent this behaviour by deselecting the "Always save user settings" check box. When this check box is unselected then you must manually save the changes you make. You can do this by selecting the "Save Settings" option in the "File" menu.

-

- Ask user check box.

The "Ask user" check box becomes available when you deselect the "Always save user settings" check box. If you select the "Ask user" check box, then SuperNova will ask you if you want to save the changes you have made when you quit SuperNova.

- Voice at user logon check box.

You can add speech support to the Windows Logon Screen by selecting this check box. After selecting this check box, at the Windows Logon Screen you can use the following hot keys to control speech:

- Press F1 to announce the available hot keys.
- Press F2 to mute the voice.
- Press F3 to repeat the last speech output.

Note: Speech at the Windows Logon Screen is only possible by having a SuperNova component running as a Windows service. You cannot run a full program at the Windows logon screen because of Windows security restrictions.

20.23 General Update Settings dialog box

Menu: General > Update Settings

The "Update Settings" dialog box sets when SuperNova automatically checks for updates. SuperNova can check daily, weekly, monthly or never.

You can also keep SuperNova up-to-date by selecting "Check for Updates" from the "Help" menu.

20.24 General Control Panel dialog box

Menu: General > Control Panel

The "Control Panel" dialog box contains global settings to control the SuperNova user interface.

- **Access System Language list.**
This list box lets you change the SuperNova system language. This includes all of the text in the SuperNova control panel, synthesiser output language and help files.
- **Enable helpful warnings check box**
This checkbox switches the helpful warnings on or off. An example for a helpful warning is the graphics training: If you press the hot key for graphic training but graphic training is switched off you can get a warning.
- **Enable help messages check box.**
Help messages can appear to guide you through specific tasks. If this option is unselected then these messages will not appear. It is also possible to disable specific help messages when they appear by unselecting the "Do not show this message again" check box within the message window itself.
- **Use Default Settings in the control panel check box.**
By default, you will use the current SuperNova settings when going through the SuperNova control panel. This lets you experience the effects of change to settings as they happen.
In some cases, settings you wish to use in your application may not be suitable for the SuperNova control panel. Selecting this check box means SuperNova will switch to use the Default Application settings and not your custom Application Settings.
- **Hide when minimised check box.**
You can prevent the SuperNova control panel being on the Taskbar and part of the "Switch To" dialog box by selecting this check box.

You can continue to access the SuperNova control panel with the "Open control panel" hot key or through the System Tray.

- **Menu bar and Button Bar Style radio buttons.**
You can show the SuperNova control panel only as a menu bar or as a menu bar and button bar. The Button Bar Style includes large graphical buttons which offer easy access to the main SuperNova settings.
- **Status bar check box.**
You can hide the status bar that is part of the SuperNova control panel by deselecting this check box.
The status bar contains information about the application and the current settings file in use. All changes you make in the control panel apply to this settings file.
- **Always on top check box.**
If this setting is enabled then the SuperNova control panel will always be on top of other windows.
- **Start with panel ... radio buttons.**
You can control the appearance of the SuperNova control panel when SuperNova starts. You can set the control panel to be showing, minimised or at the same position when you last closed SuperNova.

20.24.1 Control Panel Theme

- **Control Panel Theme list.**
This list box lets you change the colours displayed in SuperNova's control panel by allowing you to select one of a number of pre-defined colour schemes. The default setting is "System Colours", which makes SuperNova use the colours of your currently chosen Windows colour scheme.

20.25 General Keyboard dialog box

Menu: General > Keyboard and Hot Keys > Keyboard

You can specify what keyboard layout and hot key set you want to use in the "Keyboard" dialog box.

Options:

- **Keyboard list.**
The "Keyboard" list box sets the keyboard type. This does not have to be a true reflection of the keyboard you are using.
- **Language list.**
The "Language" list box should match your Windows keyboard layout. The value relates to Keyboard Announcements and hot key assignments.
- **Set list.**
The "Set" list box specifies the hot key set to be used. The sets available will be restricted by the selections in the "Keyboard" list and "Language" list.
- **Restore default hot keys button.**
You can restore any changes you may have made to a hot key set by selecting this button.
- **Num Lock On enables Number Pad keys check box.**
You can enter numbers using your keyboard's Number Pad by selecting this check box. If you do select this option then turn the Num Lock Off to use SuperNova hot keys that use the Number Pad.

20.26 General Hot Keys dialog box

Menu: General > Keyboard and Hot Keys > Hot Keys

You can add, replace or remove any hot key assignments to SuperNova commands by using options in the "Hot Keys" dialog box. Note that the list of commands are global commands. Hot keys defined in Scripts and Maps cannot be changed using this dialog box.

To learn more about modifying hot keys, see the "Resolve Hot Key Conflicts" topics in this user guide.

20.27 General Touchscreen Settings dialog box

Menu: General > Touchscreen Settings

The "Touchscreen Settings" dialog box contains options that you can use to adjust the SuperNova touchscreen experience.

General tab.

- Double tap timeout slider.
This setting controls the duration between first and second taps for the gesture to be considered a double tap action. You can increase the time allowed between the first and second taps by moving the slider to the right.
- Jitter Margin slider.
The Jitter Margin is The distance an initial touch can wander before SuperNova thinks you are performing a swipe gesture. You can increase the allowable distance by moving the slider to the right.

Magnification tab.

- Display Touch Bar check box.
The SuperNova Touch Bar is a touchscreen toolbar that appears at the bottom of the screen when you do a 3 finger single tap. As well

as using the gesture, you can also control the appearance of the Touch Bar by adjusting the status of this check box.

- **Flick Inertia slider.**
Performing a single finger swipe moves the magnified screen with inertia. The faster you perform the swipe the further the SuperNova magnified screen travels. This slider controls the level of resistance SuperNova applies to the motion. You can reduce the level of resistance by moving the slider to the right.
- **Auto-Scroll Zone Width slider.**
The "Auto-Scroll Zone Width" is the distance your finger needs to be from the edge of the screen before SuperNova starts automatically scrolling the rest of the screen into view. You can increase the size of the margin by moving the slider to the right.
- **Auto-Scroll Zone Speed slider.**
The "Auto-Scroll Zone Speed" sets how fast SuperNova starts automatically scrolling when your finger enters the auto-scroll zone. You can increase the auto-scrolling speed by moving the slider to the right.
- **Pass-Through Timeout slider.**
The "Pass-Through Timeout" is the duration before which a press turns into a pass-through gesture.
- **Automatically Scroll applications check box.**
This setting controls whether a swipe gesture automatically scrolls the content within an application window when the magnified window is at the edge of the screen. For example, if you are reading a web page and the magnified window is at the bottom of the screen, performing a swipe will automatically scroll the web page, bringing more content into view. Applications that support this feature include the Start Screen, Internet Explorer, Adobe Reader and Microsoft Word.

On Screen Keyboard tab.

- **Automatically Open in Desktop Apps check box.**
SuperNova automatically shows the onscreen keyboard when you need to type and you do not have a keyboard connected to the device. You can turn off the automatic appearance of the onscreen keyboard when you are using desktop applications by deselecting this setting. With this setting turned off, you can still make the keyboard appear at any time by tapping the Keyboard button in the SuperNova Touch Bar or by tapping the Keyboard button in the Windows Notification area.
- **Colour Scheme list.**
You can change the appearance of the SuperNova onscreen keyboard by choosing an alternative colour scheme from this list. The colour schemes available offer large print high contrast colour combinations to make it easy to view the keyboard.

20.28 General Advanced Options dialog box

Menu: General > Advanced Options

You can specify settings for a variety of SuperNova features by selecting options in the "General Advanced Options" dialog box.

System Configuration tab

- **Windows Settings button.**
SuperNova makes some changes to your system to ensure best accessibility. You can disable any of the changes made by selecting this button to open the "Windows Settings" dialog box and deselecting any listed item.
- **SAM Setup button.**
You access the "Configure SAM" dialog box by selecting this button. SAM allows you to turn on or turn off the detection of speech and Braille devices and to configure the SAM driver for each device.

- Close SAM on exit check box.
Dolphin SAM is a separate component of SuperNova. You can quit Dolphin SAM when you quit SuperNova by selecting this check box.

Detection Settings tab

- Allow remote mapping check box.
You can enable remote mapping by selecting this check box. This allows computers running the Dolphin remote training utility to connect to your computer.
For security reasons, if you enable this option it will be automatically turned off when you quit SuperNova.
- Read in columns if present check box.
You can organise the screen into columns based on SuperNova's internal detection system by selecting this check box. This influences the reading options in SuperNova in areas with no Document Object Model (DOM).

20.29 Item Finder dialog box

Menu: General > Item Finder

You can use the Item Finder to list certain objects in an application window. You can then select the objects and perform actions upon them. Examples include clicking a link on a web page or moving to a heading in a document.

You can use the item finder in programs like Microsoft Office and Windows Internet Explorer.

If you are in an application that does not support the Item Finder then the Item Finder is disabled.

To learn more about the Item Finder and the support it offers for your application see the SuperNova Help available for your application.

Index

A

Acquiring a suitable camera and stand, 106

Actions, 129

Add personal notes, 14

Adjust, 97

Adjust the favourite news, radio station and podcast listings, 102

Adjust touch sensitivity, 124

Adjusting the Viewer position and size, 108

Announce capital letters, 62

C

Camera Connect and View, 105

Camera settings, 113

Capture Viewer image, 112, 119

Change how repeated characters are read, 66

Change magnification size, 29

Change Magnifier view, 30

Change Map file, 91

Change reading speed, 48

Change reading voice language, 50

Change size and position of the magnified window, 32

Change speech synthesiser, 52

Change the appearance of the SuperNova Control Panel, 27

Change the colour, font and items displayed in Line View, 71

Change voice, 49

Change volume, 48

Change what is spoken when typing, 61

Changing the colours of the image, 111, 118

Click and read, 60

Close the SuperNova control panel, 27

Connect and View, 105

Connecting to the presenter's computer, 113

Contact Dolphin UK Product Support, 17

Contact Dolphin USA Product Support, 17

Contact your Dolphin Dealer for support, 16

Control Panel Theme, 185

Control reading, 74

Controlling Auto Focus, 111

Create a Hooked Area using the keyboard, 38

Create a Hooked Area using the mouse, 40

Create Application Settings, 89

Create Situation Settings, 90

Create static magnified windows to display information, 37

D

Delete a Hooked Area using the keyboard, 39

Doc Reader, 73

Dolphin Cursor, 77

Dolphin Cursor (General), 140

Dolphin Cursor (Movement), 140

E

Edit Application Settings dialog box, 150

Edit Map dialog box, 150

Edit Script menu item, 151

Edit Situation Settings dialog box, 149

Enable automatic language switching, 51

Enhance Read From Here, 59

Exit Doc Reader, 75

Explore the Help menu, 15

F

Find help on the Dolphin website, 16

Find your product version number and your product serial number, 18

G

General Advanced Options dialog box, 189

General Control Panel dialog box, 183

General Hot Keys dialog box, 186

General Keyboard dialog box, 185

General Startup Preferences dialog box, 181

General Touchscreen Settings dialog box, 186

General Update Settings dialog box, 183

Get an overview of the magnified window position, 37

Get further product training, 18

Get Help from the SuperNova Control Panel, 14

Get help using an application, 11

Get support for SuperNova, 16

Guest Mode and Emergency Mode, 85

H

Hot key conflicts, 125

Hot Keys, 129

How to find help, 11

I

Install and Set Up, 21

Introducing the SuperNova Control Panel, 23

Item Finder, 143

Item Finder dialog box, 190

K

Keyboard commands to get around the SuperNova Control Panel, 24

L

Launch Doc Reader, 73

Line View, 69, 141

Listen to a podcast, 101

Listen to a radio station, 101

Locking the image, 112, 119

M

Magnifier, 29, 132

Magnifier Window Adjustment, 137

Magnifying the image in the Viewer, 109, 117

Make the focus easier to see, 44

Make the pointer easier to see, 45

Make the screen easier to see, 43

Media, 95

Media Books, 97

Media News, Radio Stations and Podcasts, 100

Media Scan and Read, 95

Media Scan and Read Settings dialog box, 180

Modify a Hooked Area using the keyboard, 39

Move between Help topics, 13

Move within help topics, 12

N

New Application Settings dialog box, 147

New Map dialog box, 148

New Script menu item, 149

New Situation Settings dialog box, 147

O

Open a book from an online library, 98

Open a file in the SuperNova Reader:, 97

Open the last book you were reading, 99

Open, copy or delete an existing book, 99

P

Profiles, 81

Q

Quick Navigation Keys, 144

Quick Navigation Keys for Microsoft Word, 144

Quit SuperNova, 22

R

Read a news article, 100

Read character, 55

Read continuously, 57

Read control, 56

Read date and time, 57

Read focus, 56

Read From Here, 132

Read From Here with the Dolphin Cursor, 58

Read line, 56

Read text under the mouse pointer position, 60

Read using the mouse, 60

Read window, 57

Read word, 55

Reading and typing, 55

Reassign a SuperNova hot key, 126

Reference, 147

Rotating the image in the Viewer, 111

Run SuperNova for the first time, 21

S

Save setting changes, 91

Scan and read a file, 95

Scan and read printed material, 96

Screen enhancements, 43

Scroll text in Line View, 70

Selecting the camera in SuperNova, 106

Setting up your workstation, 106

Settings Files, 89

Settings in the SuperNova Control Panel, 26

Show or hide Hooked Areas, 41

Showing and hiding the Viewer toolbar, 108, 116

Speak Keys, 131

Speech, 130

Speech Advanced Options dialog box, 179

Speech Character Echo dialog box, 176

Speech General Announcements dialog box, 178

Speech Text Style Announcements dialog box,
176

Speech Voice Preferences dialog box, 171

Start Line View, 69

Start SuperNova, 21

SuperNova Control Panel, 23

SuperNova Reader keyboard commands, 102

SuperNova Touch Bar, 123

Switch between Help and your application, 13

Switching between the Viewer and the desktop,
107, 115

Switching on the Viewer, 107, 115

T

Tell SuperNova to ignore the next key press, 125

Touchscreen, 121

Touchscreen gestures, 122

Touchscreen terminology, 121

Tracking the presenter's movement, 118

Turn magnification on or off, 29

Turn off SuperNova hot keys, 125

Turn on capital announcement, 62

Turn on capital announcement when reading lines,
63

Turn the voice off or on, 47

Typing on a touchscreen, 124

U

Use the Help Button, 15

Use the quick reference booklet, 11

Using a pitch change to indicate capitals when
spelling characters, 65

Using sounds to indicate capitals, 64

Using your camera with SuperNova, 107

V

View other parts of the screen, 33

Viewing other parts of the image, 110, 118

Viewing the presenter's computer, 114

Visual Advanced Options dialog box, 168

Visual Configure Custom Colour Scheme dialog
box, 151

Visual Connect and View Settings dialog box,
162

Visual Doc Reader Settings dialog box, 160

Visual Highlighting Options dialog box, 155

Visual Mouse Pointers dialog box, 158

Visual Multiple Monitors dialog box, 165

Voice settings, 47

W

Whiteboard Connect and View, 113

Whiteboard settings, 120