

MV-CA013-20GM/GC

1.3 MP 1/2" CMOS GigE Area Scan Camera



GEN*i*CAM

GIG*E* VISION

Introduction

MV-CA013-20GM/GC camera adopts OnSemi PYTHON1300 sensor to provide high-quality image. It uses GigE interface to transmit non-compressed images in real time with max. frame rate reaching 90 fps.

Key Feature

- Adopts GigE interface and max. transmission distance of 100 meters without relay.
- Supports auto and manual adjustment for exposure control, LUT, Gamma correction, etc.
- Up to 128 MB local memory for burst transmission and retransmission.
- Supports hardware trigger, software trigger, etc.
- Compatible with GigE Vision Protocol V2.0, GenICam Standard, and third-party software based on protocol and standard.

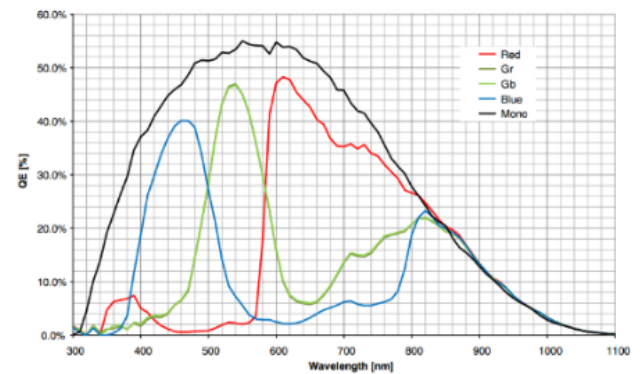
Available Model

- Mono camera: MV-CA013-20GM
- Color camera: MV-CA013-20GC

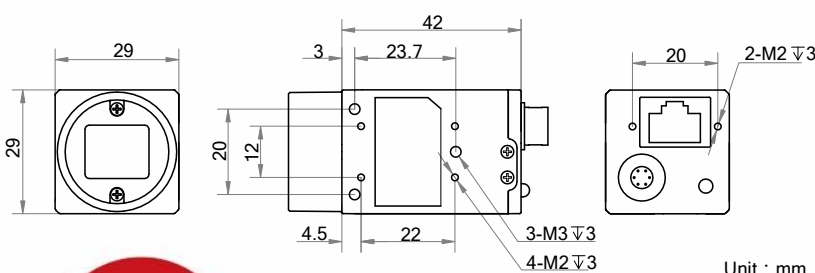
Applicable Industry

Electronic semiconductor, factory automation, food and beverage, medical packaging, etc.

Sensor Quantum Efficiency



Dimension



Unit : mm



Specification

Model	MV-CA013-20GM	MV-CA013-20GC
Camera		
Sensor type	CMOS, global shutter	
Sensor model	OnSemi PYTHON1300	
Pixel size	4.8 μm \times 4.8 μm	
Sensor size	1/2"	
Resolution	1280 \times 1024	
Max. frame rate	90 fps @1280 \times 1024	
Dynamic range	59.6 dB	
SNR	39.8 dB	
Gain	0 dB to 15 dB	
Exposure time	38 μs to 10 s	62 μs to 10 s
Exposure mode	Off/Once/Continuous exposure mode	
Mono/color	Mono	Color
Pixel format	Mono 8/10/10p/12/12p	Mono 8/10/12, Bayer RG 8/10/10p/12/12p, YUV422Packed, YUV422_YUYV_Packed, RGB 8
Binning	Supports 1 \times 1, 1 \times 2, 2 \times 1, 1 \times 4, 4 \times 1, 2 \times 2, 2 \times 4, 4 \times 2, 4 \times 4	
Decimation	Supports 1 \times 1, 2 \times 2	
Reverse image	Supports horizontal and vertical reverse image output	
Image buffer	128 MB	
Electrical features		
Data interface	Gigabit Ethernet	
Digital I/O	6-pin Hirose connector provides power and I/O, including opto-isolated input \times 1 (Line 0), opto-isolated output \times 1 (Line 1), bi-directional non-isolated I/O \times 1 (Line 2).	
Power supply	12 VDC, supports PoE	
Power consumption	Typ. 2.7 W@12 VDC	
Structure		
Lens mount	C-Mount	
Dimension	29 mm \times 29 mm \times 42 mm (1.1" \times 1.1" \times 1.7")	
Weight	Approx. 68 g (0.15 lb.)	
Ingress protection	IP30 (under proper lens installation and wiring)	
Temperature	Working temperature: 0 $^{\circ}\text{C}$ to 50 $^{\circ}\text{C}$ (32 $^{\circ}\text{F}$ to 122 $^{\circ}\text{F}$) Storage temperature: -30 $^{\circ}\text{C}$ to 70 $^{\circ}\text{C}$ (-22 $^{\circ}\text{F}$ to 158 $^{\circ}\text{F}$)	
Humidity	20% to 80% RH, non-condensing	
General		
Client software	MVS or third-party software meeting with GigE Vision Protocol	
Operating system	32/64-bit Windows XP/7/10, 32/64-bit Linux and 64-bit MacOS	
Compatibility	GigE Vision V2.0, GenICam	
Certifications	CE, FCC, RoHS, KC	



SCORPION
VISION LIMITED

www.scorpionvision.co.uk +44 (0)1590 679333
sales@scorpion.vision