

MV-CA005-20GM/GC

0.5 MP 1/3.6" CMOS GigE Area Scan Camera

GEN*i*CAM

GigE
VISION



Introduction

MV-CA005-20GM/GC adopts PYTHON480 sensor to provide high quality image. The GigE interface provides high-speed real-time transmission of uncompressed data with the maximum frame rate reaching 116 fps at full resolution.

Key Feature

- Adopts GigE interface and max. transmission distance of 100 meters without relay.
- Supports hardware triggering and software triggering.
- Supports auto and manual adjustment for exposure control, LUT, Gamma correction, etc.
- Up to 128 MB local memory for burst transmission and retransmission.
- Compatible with GigE Vision Protocol V1.2 and third-party software meeting with GigE Vision Protocol.

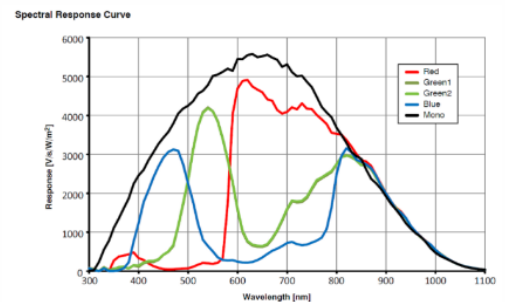
Available Model

- Mono camera: MV-CA005-20GM
- Color camera: MV-CA005-20GC

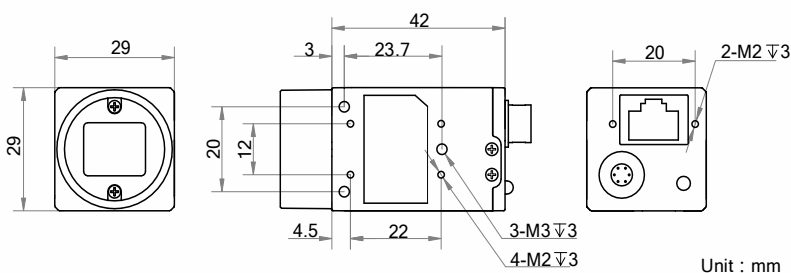
Applicable Industry

Electronic semiconductor, factory automation, quality inspection, etc.

Sensor Quantum Efficiency



Dimension



Specification

Model	MV-CA005-20GM	MV-CA005-20GC
Camera		
Sensor type	CMOS, global shutter	
Sensor model	PYTHON480	
Pixel size	4.8 μm \times 4.8 μm	
Sensor size	1/3.6"	
Resolution	808 \times 608	
Max. frame rate	116 fps @808 \times 608	
Dynamic range	59 dB	
SNR	57 dB	
Gain	0 dB to 15 dB	
Exposure time	42 μs to 10 s	
Exposure mode	Off/Once/Continuous exposure mode	
Mono/color	Mono	Color
Pixel format	Mono 8/10/10p/12/12p	Mono 8/10/12, Bayer RG 8/10/10p/12/12p, YUV 422 Packed, YUV422_YUYV_Packed, RGB 8
Binning	Supports 1 \times 1, 1 \times 2, 2 \times 1, 1 \times 4, 4 \times 1, 2 \times 2, 2 \times 4, 4 \times 2, 4 \times 4	
Decimation	Supports 1 \times 1, 2 \times 2	
Reverse image	Supports horizontal and vertical reverse image output	
Image buffer	128 MB	
Electrical features		
Data interface	Gigabit Ethernet	
Digital I/O	6-pin Hirose connector provides power and I/O, including opto-isolated input \times 1 (Line 0), opto-isolated output \times 1 (Line 1), bi-directional non-isolated I/O \times 1 (Line 2).	
Power supply	12 VDC, supports PoE	
Power consumption	Typ. 3.0 W@12 VDC	
Structure		
Lens mount	C-Mount	
Dimension	29 mm \times 29 mm \times 42 mm (1.1" \times 1.1" \times 1.7")	
Weight	Approx. 68 g (0.15 lb.)	
Ingress protection	IP30 (under proper lens installation and wiring)	
Temperature	Working temperature: 0 $^{\circ}\text{C}$ to 50 $^{\circ}\text{C}$ (32 $^{\circ}\text{F}$ to 122 $^{\circ}\text{F}$) Storage temperature: -30 $^{\circ}\text{C}$ to 70 $^{\circ}\text{C}$ (-22 $^{\circ}\text{F}$ to 158 $^{\circ}\text{F}$)	
Humidity	20% to 80% RH, non-condensing	
General		
Client software	MVS or third-party software meeting with GigE Vision Protocol	
Operating system	32/64-bit Windows XP/7/10, 32/64-bit Linux and 64-bit MacOS	
Compatibility	GigE Vision V1.2, GenICam	
Certifications	CE, FCC, RoHS, KC	



SCORPION
VISION LIMITED

www.scorpionvision.co.uk +44 (0)1590 679333
sales@scorpion.vision