

# MV-CE013-50GM/GC

1.3 MP, 1/3" CCD, GigE Area Scan Camera



GEN<i>i</i>CAM

GIGE  
VISION

## Introduction

MV-CE013-50GM/GC 1.3 MP 1/3" CCD GigE Camera is a high quality device that can be used in a variety of applications, including electronic semiconductor fabrication, factory automation, quality inspection.

## Key Feature

- Adopts GigE interface and max. transmission distance of 100 meters without relay
- Up to 128 MB local memory for burst transmission and retransmission
- Supports auto exposure control, LUT, Gamma correction, etc.
- Supports hardware trigger, software trigger, etc.
- Compatible with GigE Vision V1.2 Protocol and the third-party software based on the protocol

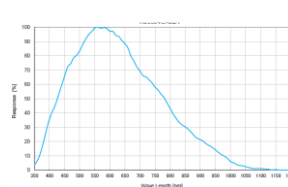
## Available Model

Mono camera: MV-CE013-50GM  
Color camera: MV-CE013-50GC

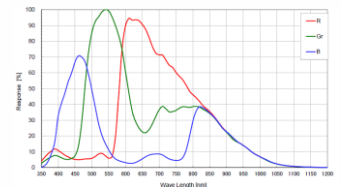
## Applicable Industry

Electronic semiconductor, factory automation, quality inspection, etc.

## Sensor Quantum Efficiency

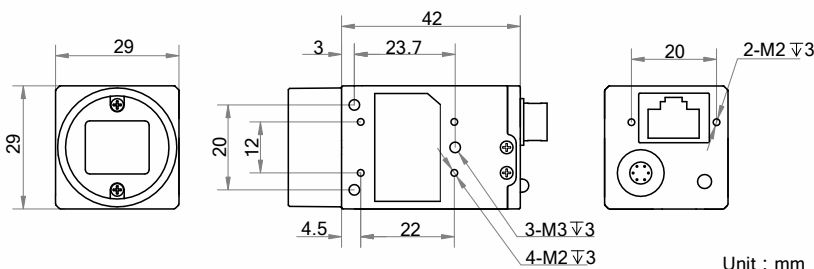


MV-CE013-50GM



MV-CE013-50GC

## Dimension



Unit : mm



## Specification

Model	MV-CE013-50GM	MV-CE013-50GC
<b>Camera</b>		
Sensor type	CCD, global shutter	
Sensor model	RJ33	
Pixel size	3.75 $\mu\text{m}$ $\times$ 3.75 $\mu\text{m}$	
Sensor size	1/3"	
Resolution	1280 $\times$ 960	
Max. frame rate	30 fps @1280 $\times$ 960	
Dynamic range	60 dB	
SNR	37 dB	
Gain	0 dB to 20 dB	
Exposure time	34 $\mu\text{s}$ to 1 s	
Shutter mode	Off/Once/Continuous exposure mode	
Mono/color	Mono	Color
Pixel format	Mono 8/10/10p/12/12p	Mono 8/10/12, Bayer GR 8/10/10p/12/12p, YUV 422 Packed, YUV422_YUYV_Packed, RGB8
Binning	Not support	
Decimation	Not support	
Reverse image	Supports horizontal reverse image output	
Image buffer	128 MB	
<b>Electrical features</b>		
Data interface	Gigabit Ethernet	
Digital I/O	Opto-isolated input x 1, opto-isolated output x 1, and bi-directional non-isolated I/O x 1	
Power supply	5 VDC to 15 VDC, supports PoE power supply	
Power consumption	Approx. 2.6 W@12 VDC	
<b>Structure</b>		
Lens mount	C-Mount	
Dimension	29 mm $\times$ 29 mm $\times$ 42 mm (1.1" $\times$ 1.1" $\times$ 1.7")	
Weight	Approx. 68 g (0.15 lb.)	
Ingress protection	IP30 (under proper lens installation and wiring)	
Temperature	Working temperature: 0 $^{\circ}\text{C}$ to 50 $^{\circ}\text{C}$ (32 $^{\circ}\text{F}$ to 122 $^{\circ}\text{F}$ ) Storage temperature: -30 $^{\circ}\text{C}$ to 70 $^{\circ}\text{C}$ (-22 $^{\circ}\text{F}$ to 158 $^{\circ}\text{F}$ )	
Humidity	20% to 80% RH, without condensation	
<b>General</b>		
Client software	MVS or third-party software meeting with GigE Vision Protocol	
Operating system	32/64-bit Windows XP/7/10, 32/64-bit Linux and 64-bit MacOS	
Compatibility	GigE Vision	
Certification	CE, FCC, RoHS, KC	



**SCORPION**  
VISION LIMITED

[www.scorpionvision.co.uk](http://www.scorpionvision.co.uk) +44 (0)1590 679333  
sales@scorpion.vision