

MV-CA003-50GM/GC

0.3 MP 1/3" CCD GigE Area Scan Camera



GEN*i*CAM

GIG*E* VISION

Introduction

MV-CA003-50GM/GC Camera is a high quality device that can be used in a variety of applications, including electronic semiconductor fabrication, factory automation, and quality inspection.

Key Feature

- Adopts GigE interface and max. transmission distance of 100 meters without relay.
- Up to 128 MB local memory for burst transmission and retransmission.
- Supports auto exposure control, LUT, Gamma correction, etc.
- Supports hardware trigger, software trigger, etc.
- Compatible with GigE Vision V1.2 Protocol and the third-party software based on the protocol.

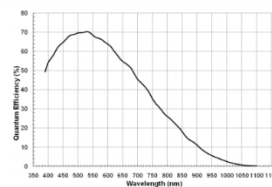
Available Model

- Mono camera: MV-CA003-50GM
- Color camera: MV-CA003-50GC

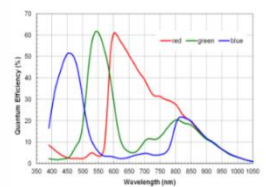
Applicable Industry

Electronic semiconductor, factory automation, quality inspection, etc.

Sensor Quantum Efficiency

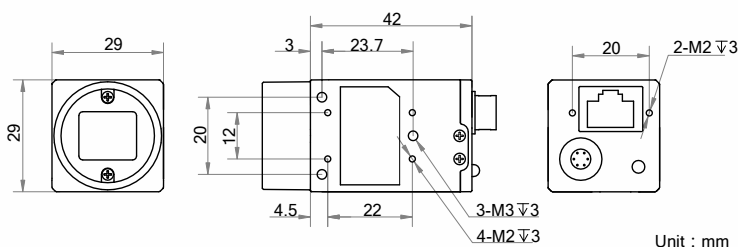


MV-CA003-50GM



MV-CA003-50GC

Dimension



Specification

Model	MV-CA003-50GM	MV-CA003-50GC
Camera		
Sensor type	CCD, global shutter	
Sensor model	RJ33	
Pixel size	7.4 μm \times 7.4 μm	
Sensor size	1/3"	
Resolution	640 \times 480	
Max. frame rate	200 fps @640 \times 480	
Dynamic range	52 dB	
SNR	37 dB	
Gain	0 dB to 20 dB	
Exposure time	20 μs to 1 s	
Exposure mode	Off/Once/Continuous exposure mode	
Pixel format	Mono 8/10/10p/12/12p	Mono 8/10/12, Bayer GB 8/10/10p/12/12p, YUV 422 Packed, YUV422_YUYV_Packed, RGB 8
Binning	Not support	
Decimation	Not support	
Reverse image	Supports horizontal reverse image output	
Image buffer	128 MB	
Electrical features		
Data interface	Gigabit Ethernet	
Digital I/O	6-pin Hirose connector provides power and I/O, including opto-isolated input \times 1 (Line 0), opto-isolated output \times 1 (Line 1), bi-directional non-isolated I/O \times 1 (Line 2).	
Power supply	12 VDC, supports PoE	
Power consumption	Typ. 3.6 W@12 VDC	
Structure		
Lens mount	C-Mount	
Dimension	29 mm \times 29 mm \times 42 mm (1.1" \times 1.1" \times 1.7")	
Weight	Approx. 68 g (0.15 lb.)	
Ingress protection	IP30 (under proper lens installation and wiring)	
Temperature	Working temperature: 0 $^{\circ}\text{C}$ to 50 $^{\circ}\text{C}$ (32 $^{\circ}\text{F}$ to 122 $^{\circ}\text{F}$) Storage temperature: -30 $^{\circ}\text{C}$ to 70 $^{\circ}\text{C}$ (-22 $^{\circ}\text{F}$ to 158 $^{\circ}\text{F}$)	
Humidity	20% to 80% RH, non-condensing	
General		
Client software	MVS or third-party software meeting with GigE Vision Protocol	
Operating system	32/64-bit Windows XP/7/10, 32/64-bit Linux and 64-bit MacOS	
Compatibility	GigE Vision V1.2, GenICam	
Certification	CE, FCC, RoHS, KC	



SCORPION
VISION LIMITED

www.scorpionvision.co.uk +44 (0)1590 679333
sales@scorpion.vision