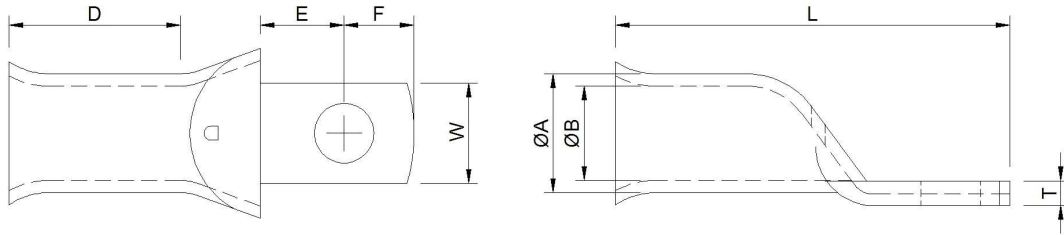


## NARROW PALM TERMINALS

This range of terminal incorporates a reduced palm width and is suited for applications where accessibility to the fixing point may be limited / restricted.

They are manufactured using our standard HD range of terminals and can be supplied with various stud sizes and palm widths to suit your application. These would be supplied with a Tin coating (5 $\mu$ ) as standard but could also be supplied Plain or with a Nickel or Silver coating if required.



Please contact a member of our sales team for more information on this product range



(Product examples above show Tin (Sn) coating as standard)