

Finishes

ECO-WOOD



72
noce



73
olmo
termotrattato

VENEERS



N04
rovere
chiaro



N02
rovere
miele



N01
rovere
terra



N05
rovere
carbone

NOCE CANALETTO



N03
noce
canaletto

RAYS



N03
noce
canaletto

CLAY



A04
pomice



A03
arena



A01
mattone







A02
fumo

Lacquered finishes

WATER-BASED
MATT
LACQUERED

						
300 bianco	351 magnolia	303 tortora	314 corda	333 sabbia	331 visone	324 fango
						
330 grigio	341 cenere	352 piombo	310 quarzo	318 nero grafite	353 blu notte	347 marino
						
325 oceano	344 avio	339 artico	346 foresta	342 foglia	345 timo	354 tiglio
				RAYS		
355 ginepro	348 granato	356 sandalò	357 senape		Matt lacquered in all finishes	

OXIDIZED
LACQUERED

			RAYS	
306 bronze	304 light bronze	305 pewter		Oxidized lacquered in all finishes

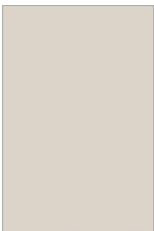
The oxidized lacquered finish is composed of paint containing metal crystals. Any small shiny particles present on large surfaces should be seen as a distinctive feature of the finish.

Lacquered finishes

GLOSS
LACQUERED



400
bianco



451
magnolia



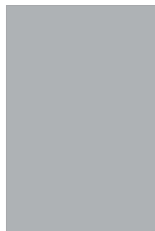
403
tortora



414
corda



433
sabbia



430
grigio



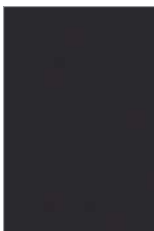
441
cenere



452
piombo



410
quarzo



418
nero grafite



453
blu notte



447
marino



444
avio



439
artico



455
ginepro



456
sandalò

METAL
LACQUERED



307
copper

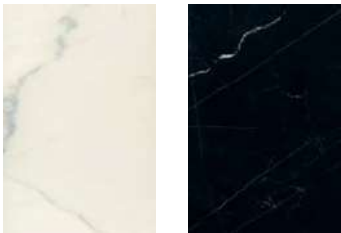


308
brass

Finishes available for metal items only.
The metal lacquered finish serves up a special coating technique involving various coats of paint applied entirely by hand that are combined to achieve a metallic effect. This is a handcrafted product, and is therefore unique, meaning any differences in colour or in gloss level on different surfaces should be seen as a distinctive feature of the finish.

Light stone, Marble and Lava Stone

LIGHT STONE

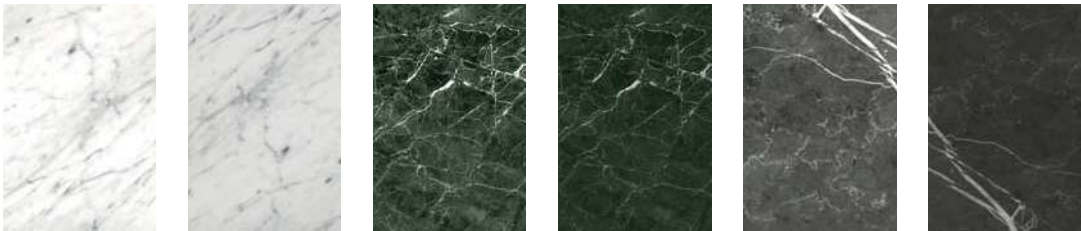


R01
bianco

R02
nero

Light stone is a dense, impermeable hard-paste ceramic product fired at high temperatures, causing the mixture to vitrify. Variations in colour are attributable to the different reaction during firing.

MARBLE



MM1
polished bianco
Carrara

MM2
matt bianco
Carrara

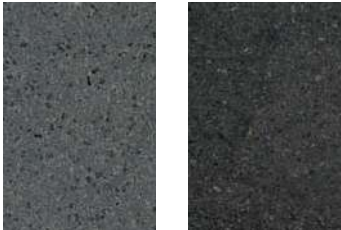
MM5
polished verde
Guatemala

MM6
matt verde
Guatemala

MM3
polished grigio
Oriente

MM4
matt grigio
Oriente

LAVA STONE



MM7
matt

MM8
matt black

IMPORTANT INFORMATION

Marble and lava stone are natural products and, as such, considerable variations can occur in the colour of the material and, in the case of marble, in the veining, too.

BIANCO CARRARA

White marble, with a granulated sugar-like texture and grey/dark-grey veining. It may feature small pits or crystalline inclusions varying in size. This material has a good degree of cohesion and does not require resining. Whitish or yellowish veins may be visible, mostly due to the presence of silica impurities. Natural fissures are commonly encountered in the marble: they run in a different direction to that of the sedimentation that formed the rock and appear as fine lines or fissures. In this marble, veins can give the surface a flow, further enhancing its appearance.

GRIGIO ORIENTE

Tobacco-coloured marble featuring a thread-like pattern running in no dominant direction. It features a discontinuous pattern of white or white/rust-brown veins. Patches of more porous material are widespread throughout this marble and are remedied by resining and filling the exposed side of the top. Resining is required to improve the material's cohesion, while filling is done to correct these "softer" parts of the surface, which can vary in size. Consequently, resin and filling procedures should be seen as an inevitable part of the processing of this marble. As a result of the process, light can bounce off the treated areas of the polished surface differently when viewed against the light, creating visible patches.

VERDE GUATEMALA

This rock is a member of the ophite group. The predominant mineral is olivine, which gives it its dark green colour. It contains random patterns of additional minerals that produce white inclusions, usually clustered in mottled patches. This material's distinctive vitreous structure means it does not have as much of a "mirror finish" as other marbles when polished. The green colour seen in a slab varies in intensity and distribution, clustered in different concentrations and shapes featuring irregular outlines.

LAVA STONE

Lava stone is a rock formed as a result of a volcanic eruption. It owes its origin and shape to deposits of volcanic ash, sand and lapilli. It has a basically microcrystalline structure and the honed surface shimmers with microscopic cavities that can be seen with the naked eye when light shines across it. Its base colour is mainly grey with dark patches, the latter arranged in a "sprinkled" pattern or clustered in veins, with a brushstroke-like effect and appearance.

Toughened glass and leather

STANDARD
TOUGHENED
GLASS



C08
transparent



C80
smoked



C81
stop-sol

REEDED
TOUGHENED
GLASS



C02
reeded

LEATHER
(matching
stitching)



03W
cognac



03X
scoglio



03T
testa di moro