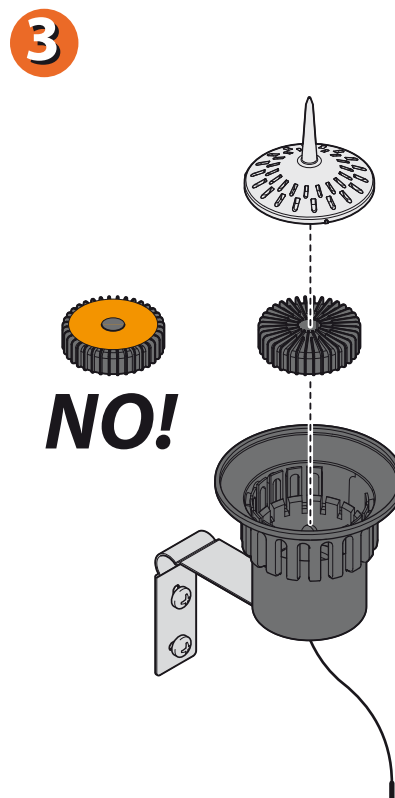
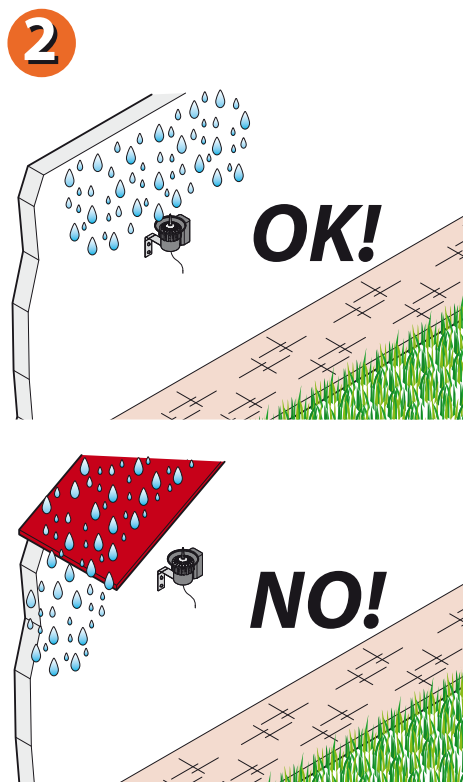
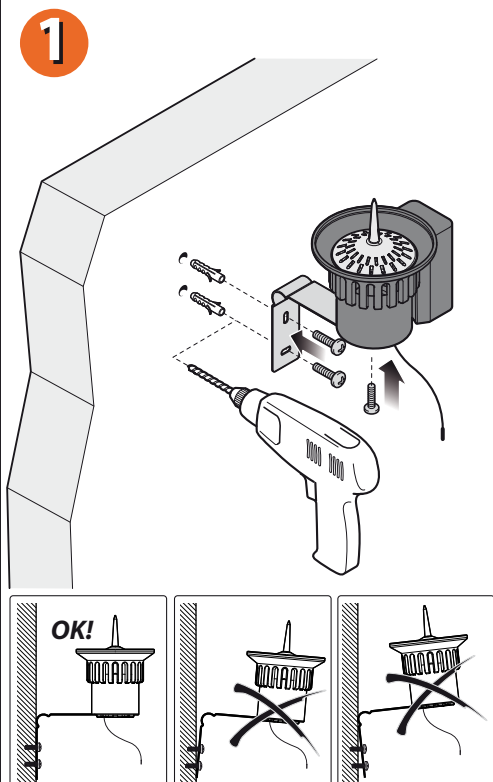


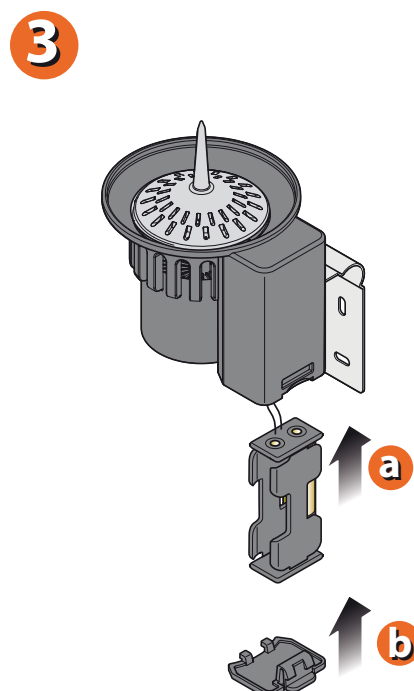
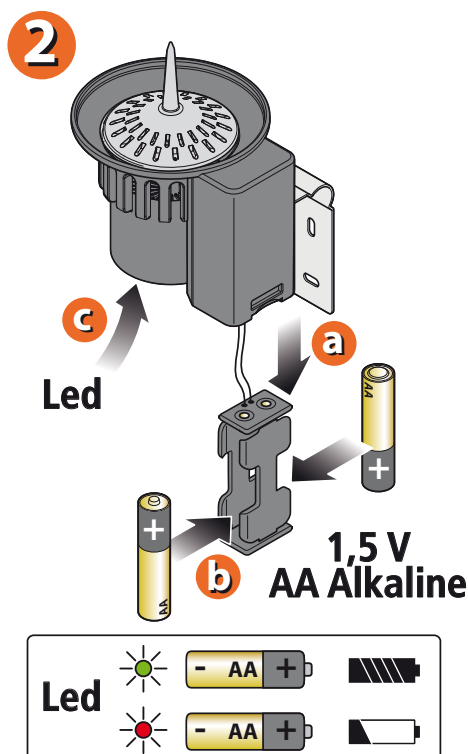
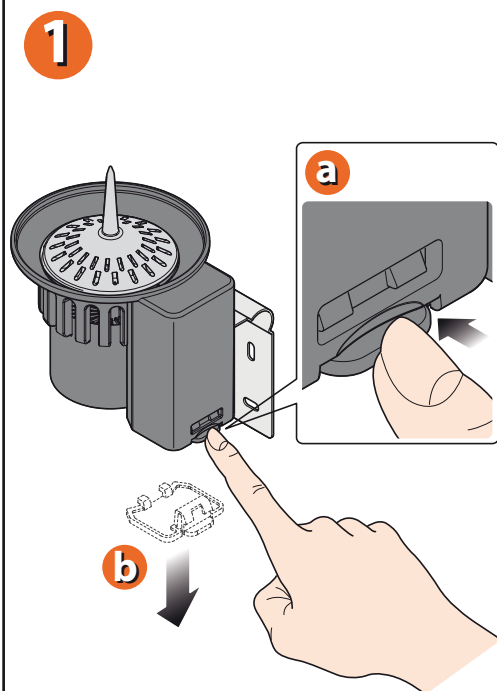
Install the Rain Sensor in a position freely exposed to rainfall and well away from sprinkler jets.



Rain Sensor RF (cod.): 90831

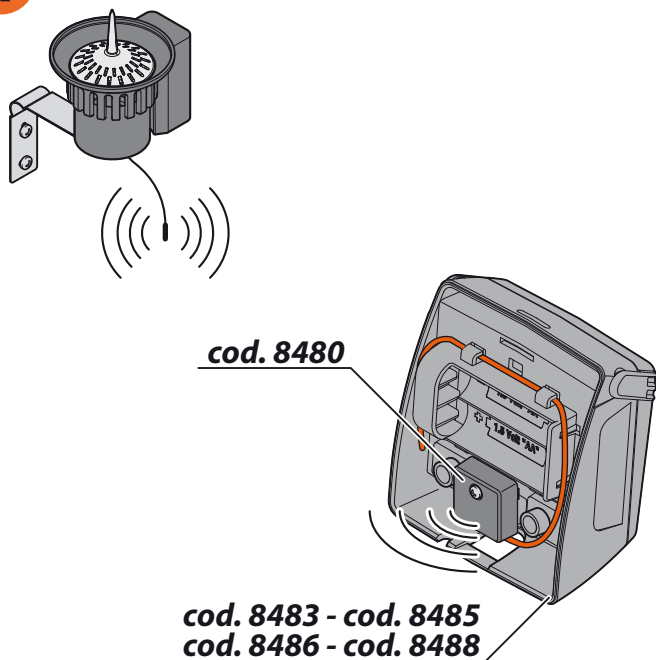
FITTING THE BATTERIES.

Fitting/replacement procedure: Press the tab firmly and pull downwards. Remove the cover of the battery housing. Draw the battery holder out of the housing. Fit the 2 batteries inside the holder, observing the correct polarity. Replace the battery holder in the housing. Refit the cover of the battery housing.



Rain Sensor RF (cod.): 90831

The RF Rain Sensor can be associated with Dual or Tempo control units by way of an adaptor, p/n 8480. The RF Rain Sensor RF can be associated with products of the RF range.

1

2


Rain Sensor RF (cod.): 90831

For more information and further details, please consult the instruction manual supplied with the product.