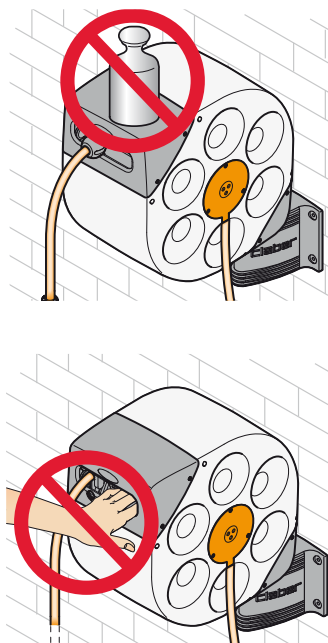


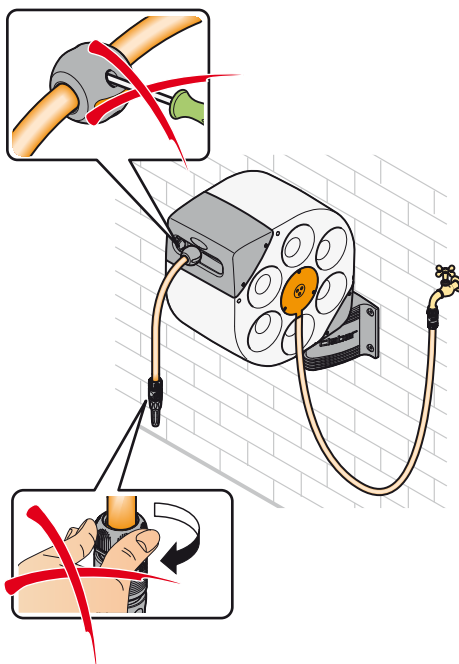
Safety precaution. The user must never open Rotoroll to inspect it, replace parts or undertake repairs. The reeling mechanisms spring may pop out of its seat and cause damage and injury to persons, animals and objects for which the Manufacturer has no liability. For any functioning problems and/or parts replacement, contact your Claber dealer and ask for original Manufacturer authorised spares. Failure to comply with this rule shall forfeit the Guarantee and frees the Manufacturer of all liabilities.

- Rotoroll was built and designed to reel a watering hose according to the indications provided by this manual; all other uses are considered inappropriate and potentially dangerous for persons, animals and objects.
- At the onset of winter, remove Rotoroll from its wall support and store it in an indoor heated area to avoid harsh temperatures. Before proceeding with this, remember to fully turn off the tap and drain all water from the hose.
- Make sure that sharp and pointy objects do not damage the hose!
- Make sure that children do not play with Rotoroll or with any of its parts; do not set any weights down onto it (e.g. flower pots, etc...)
- After each use, turn off the tap and completely rewind the hose, accompanying it into its seat; aside from keeping your garden tidy, this action helps to protect the internal spring from a needless and lengthy tension.
- Never remove the hose attachment and grip at the same time!

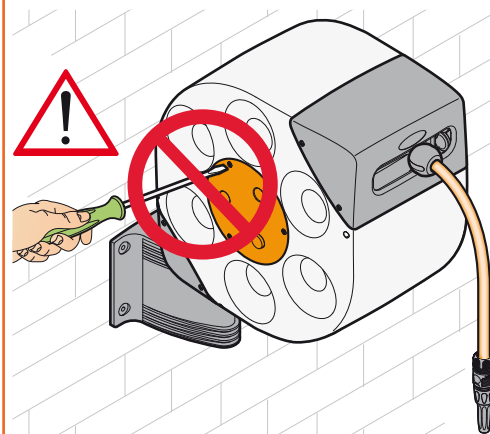
1



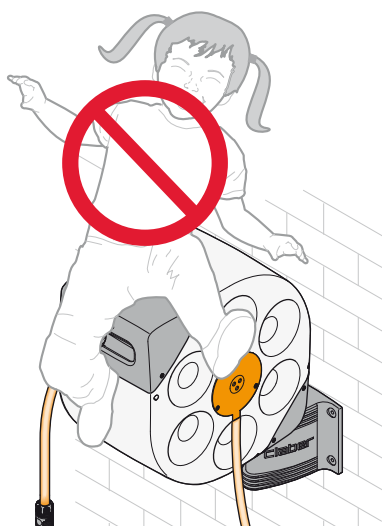
2



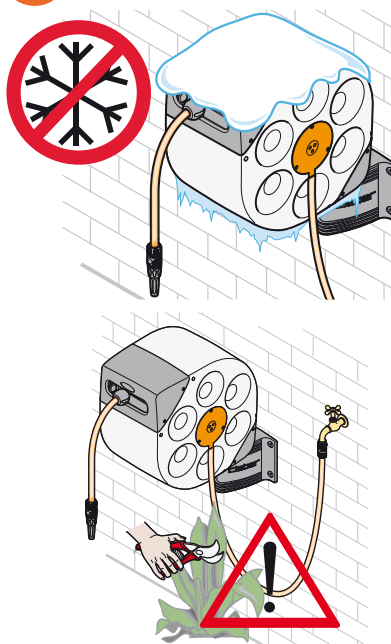
3



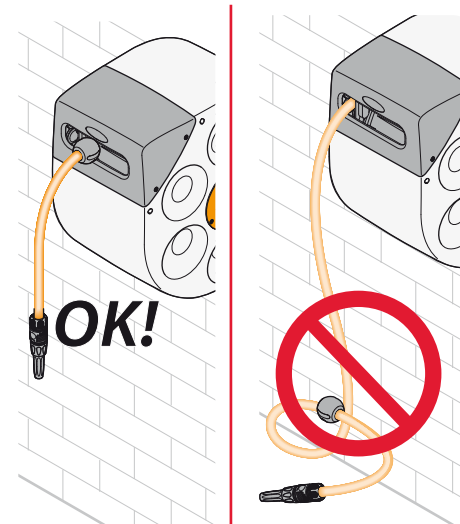
4



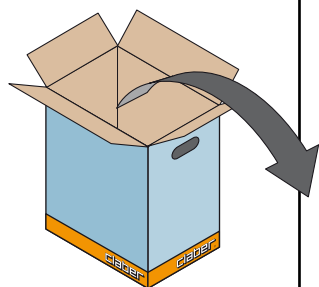
5



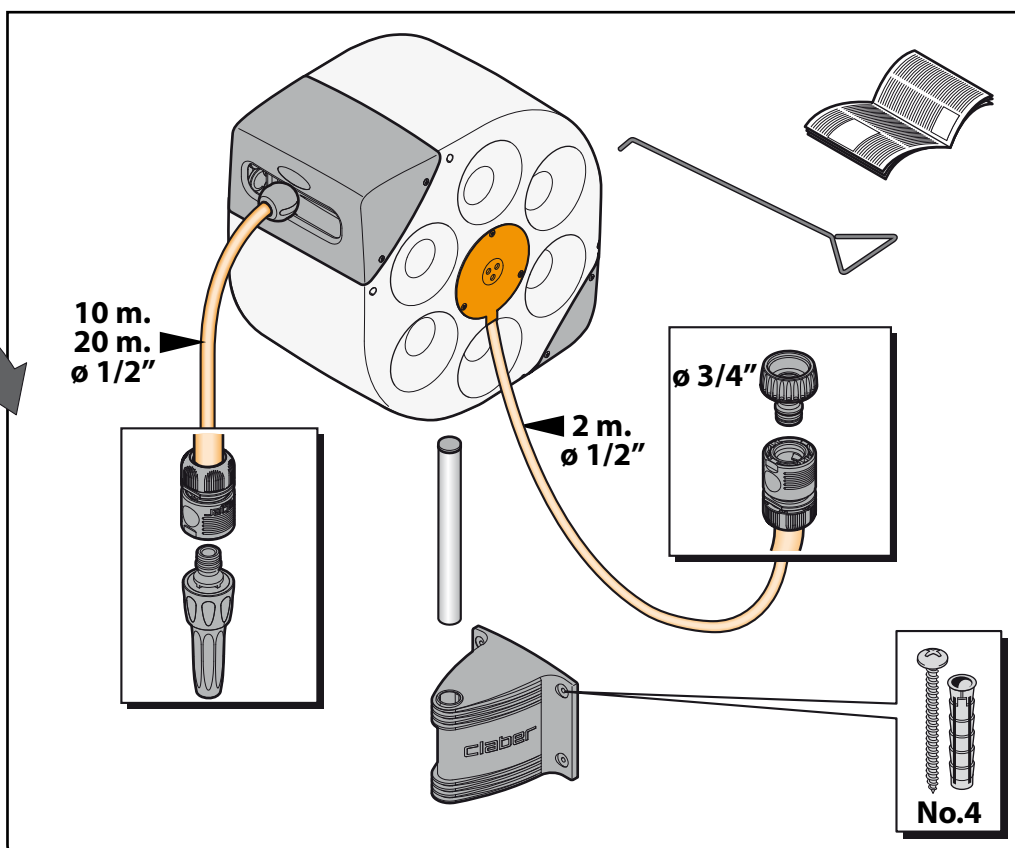
6



Parts supplied:

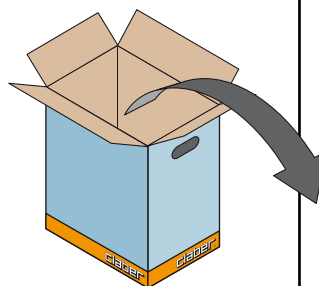


**ROTOROLL
AUTOMATIC**
8988 - 10 m.
8990 - 20 m.

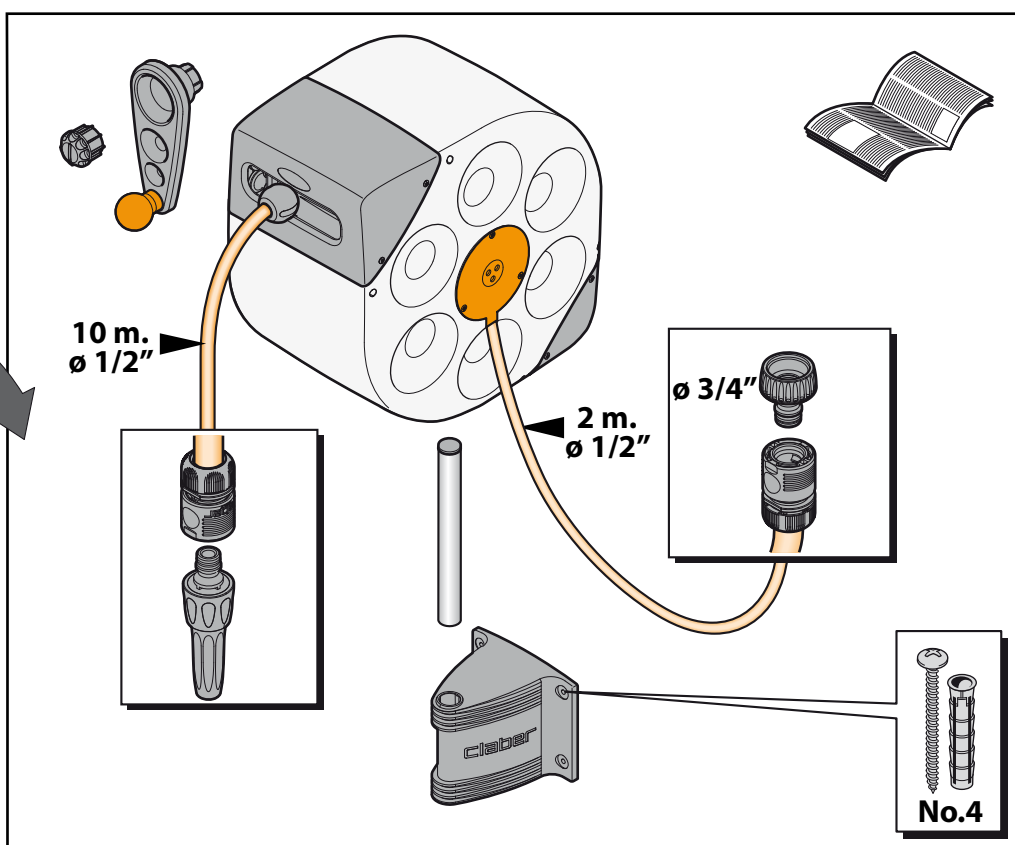


For Rotoroll (code): 8988 - 8990

Parts supplied:

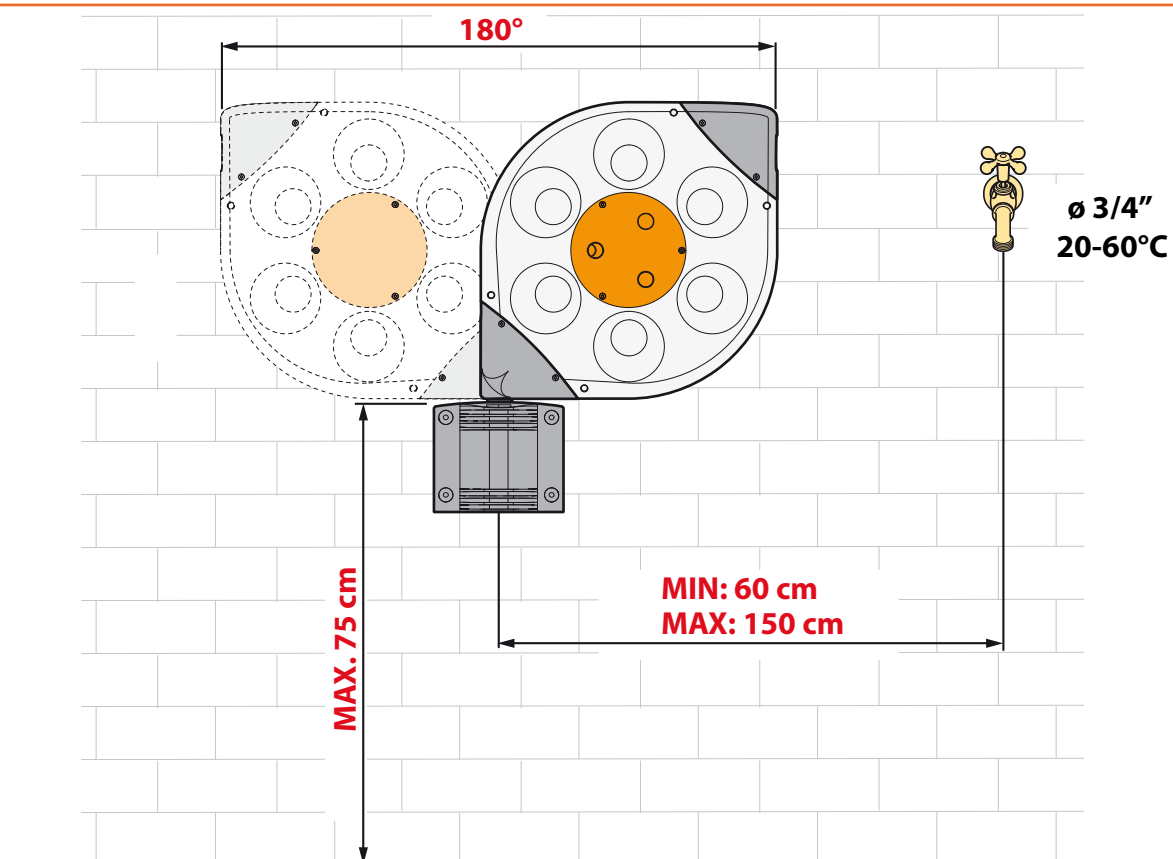


**ROTOROLL
MANUAL**
8986 - 10 m.



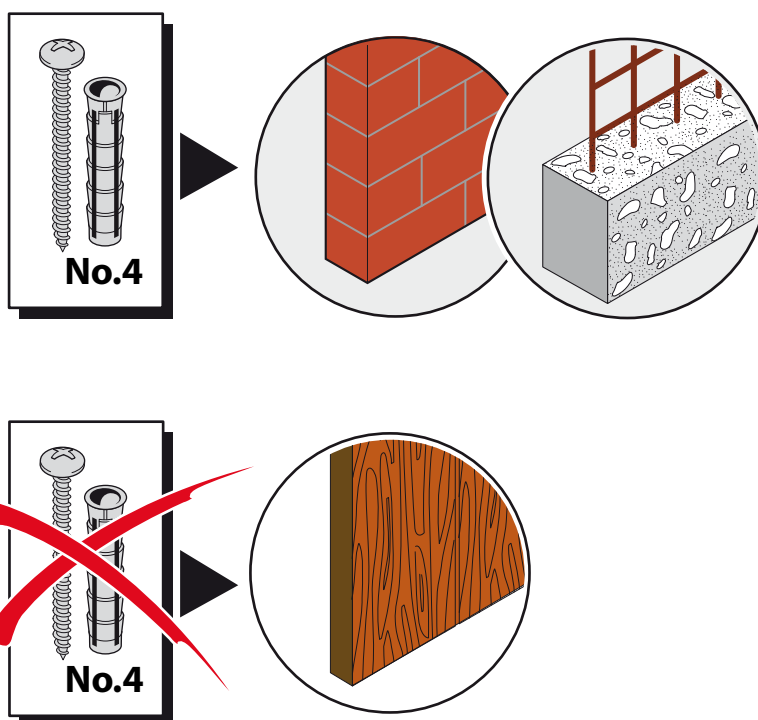
For Rotoroll (code): 8986

Positioning.



For Rotoroll (code): 8986 - 8988 - 8990

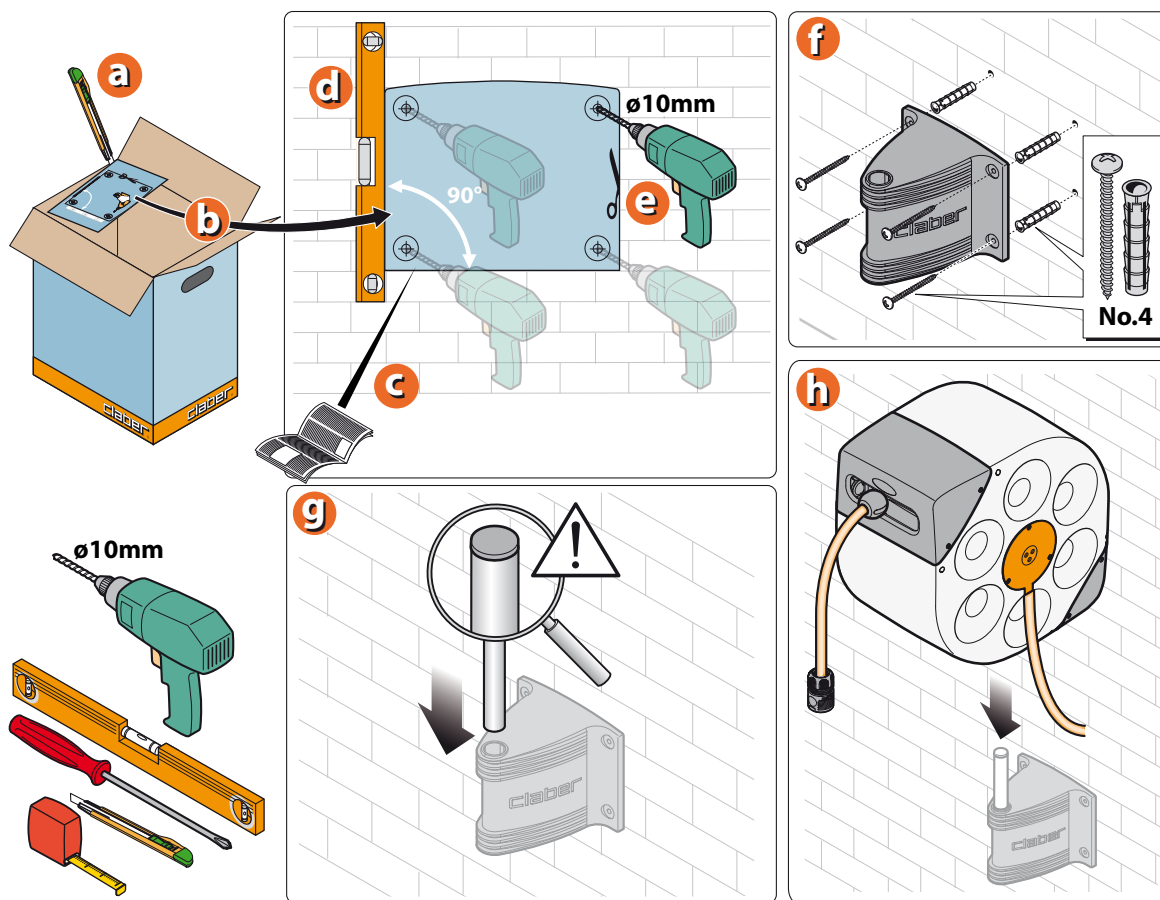
Fastening screws supplied.



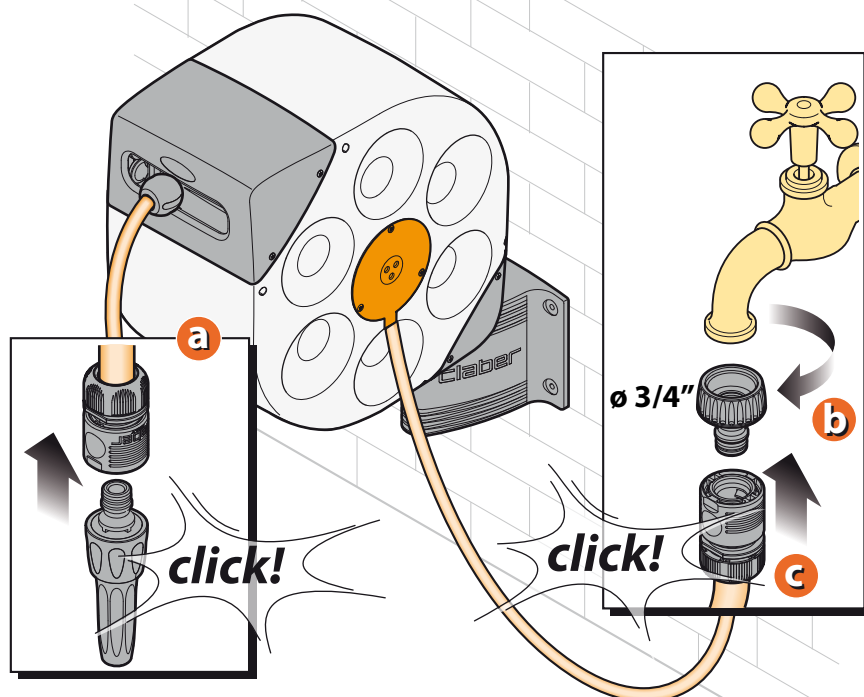
For Rotoroll (code): 8986 - 8988 - 8990

Assembly instructions

1

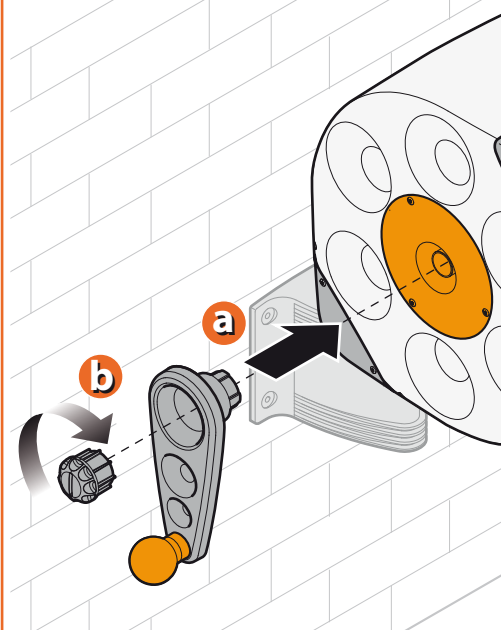


2



3

**only for
Rotoroll Manual
code 8986**



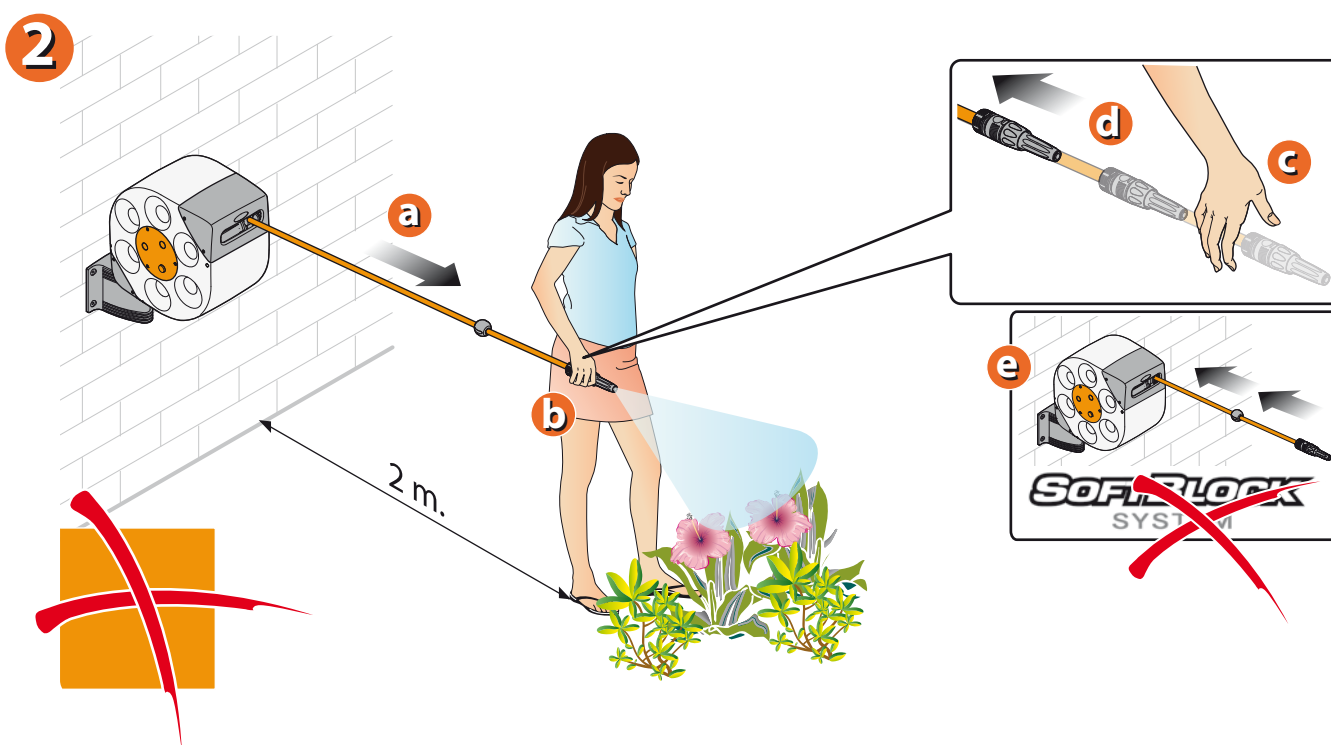
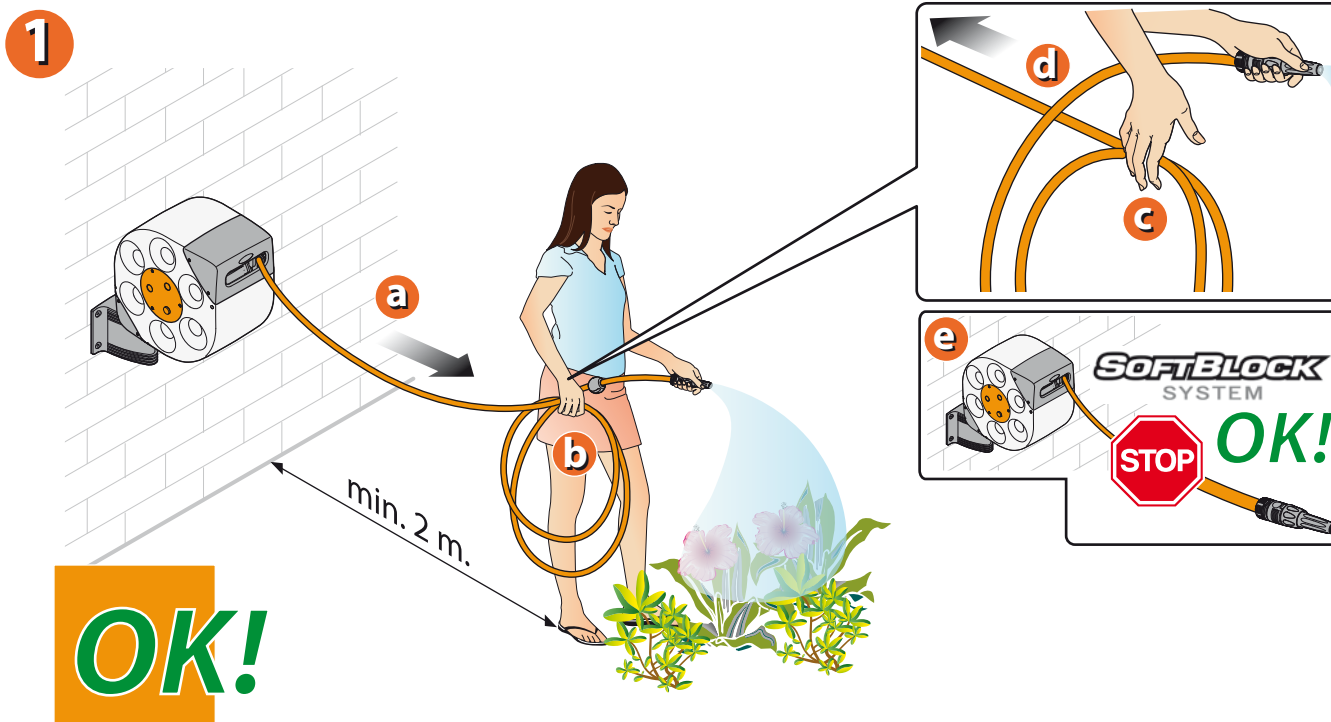
USE. ROTOROLL AUTOMATIC (code: 8988/8990) automatically rewind the garden hose after every use, always keeping your green area tidy. It also includes a special device **SOFTBLOCK SYSTEM** prevents accidental recoil.

ROTOROLL AUTOMATIC (code: 8986) has a manual guided hose reel system that is actioned by using the crank on the left-hand side.

LOCKING THE HOSE IN PLACE WHILE WATERING: unwind the hose until reaching the watering spot (a), unwind another two coils of hose, holding these in hand (b). Open the hand grasping the two hose coils (c): it will start to wind up (d) but after a few moments the **SOFTBLOCK SYSTEM** device will lock it in place(e).

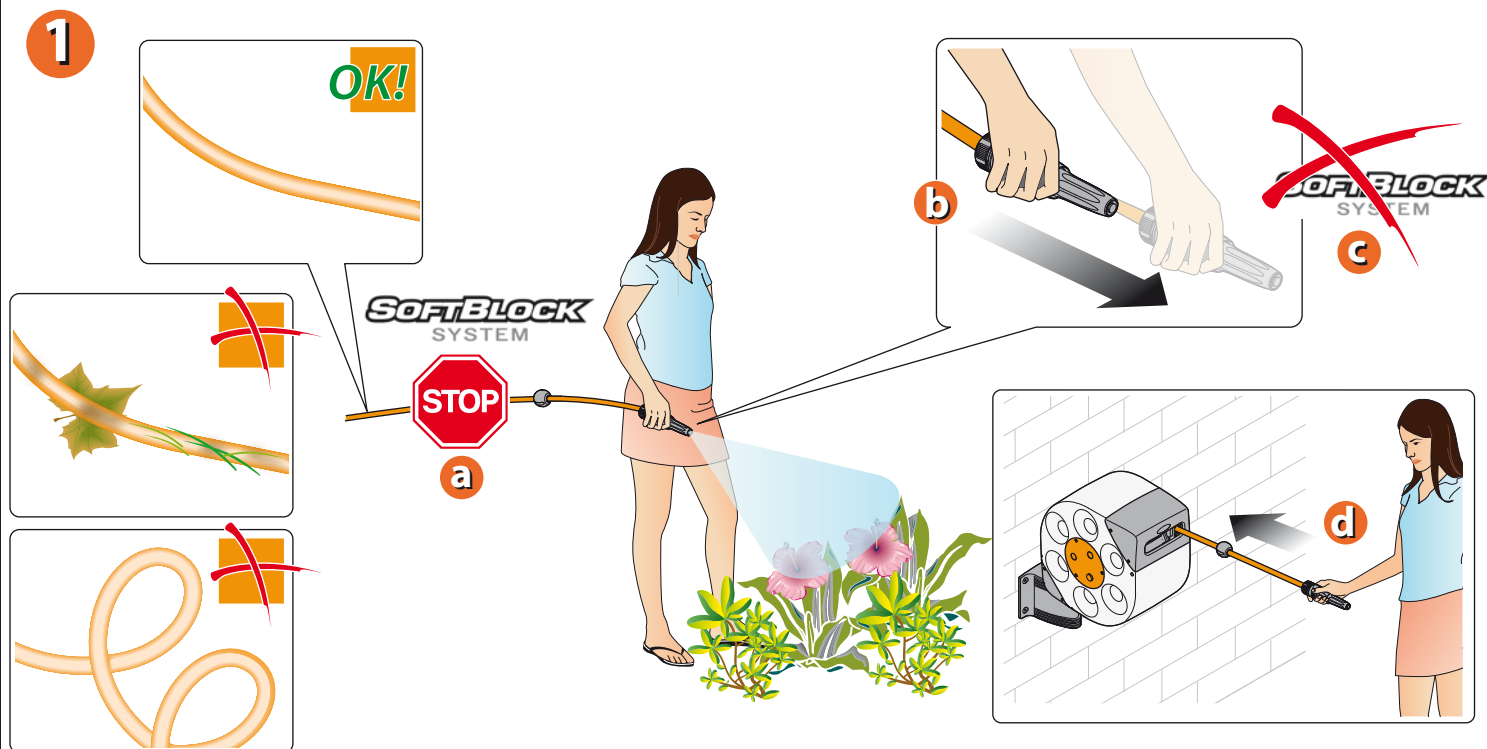
Important: the device **SOFTBLOCK SYSTEM** is engaged only if the length of unwinded hose exceeds 2 meters.

UNLOCKING THE HOSE WHEN WATERING: to unlock the hose held by the device **SOFTBLOCK SYSTEM**, simply pull it forward; and lock it in place by following the previous instructions.



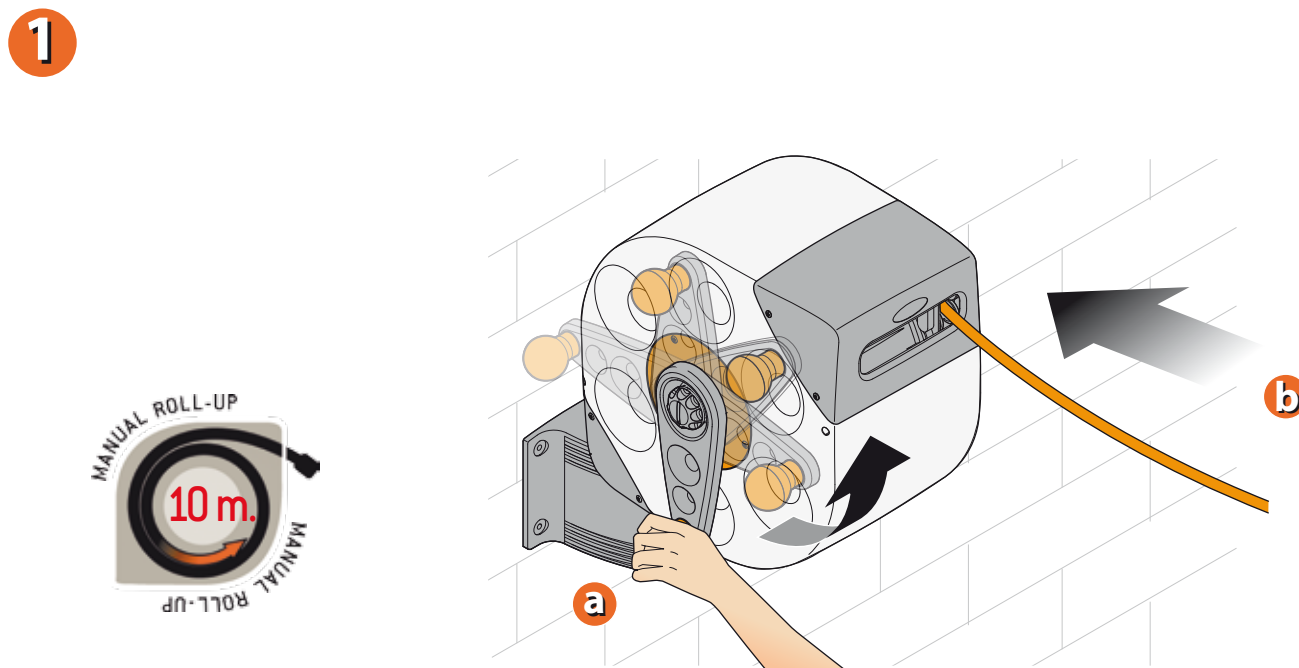
USE. REWINDING THE HOSE AFTER WATERING

ROTOROLL AUTOMATIC (code: 8988/8990): pull the hose forward approximately 10-20 cm (b) to unlock the device **SOFTBLOCK SYSTEM** (c); accompany hose rewinding, grasping it in hand and walking towards ROTOROLL (d).



For Rotoroll (code): 8988 - 8990

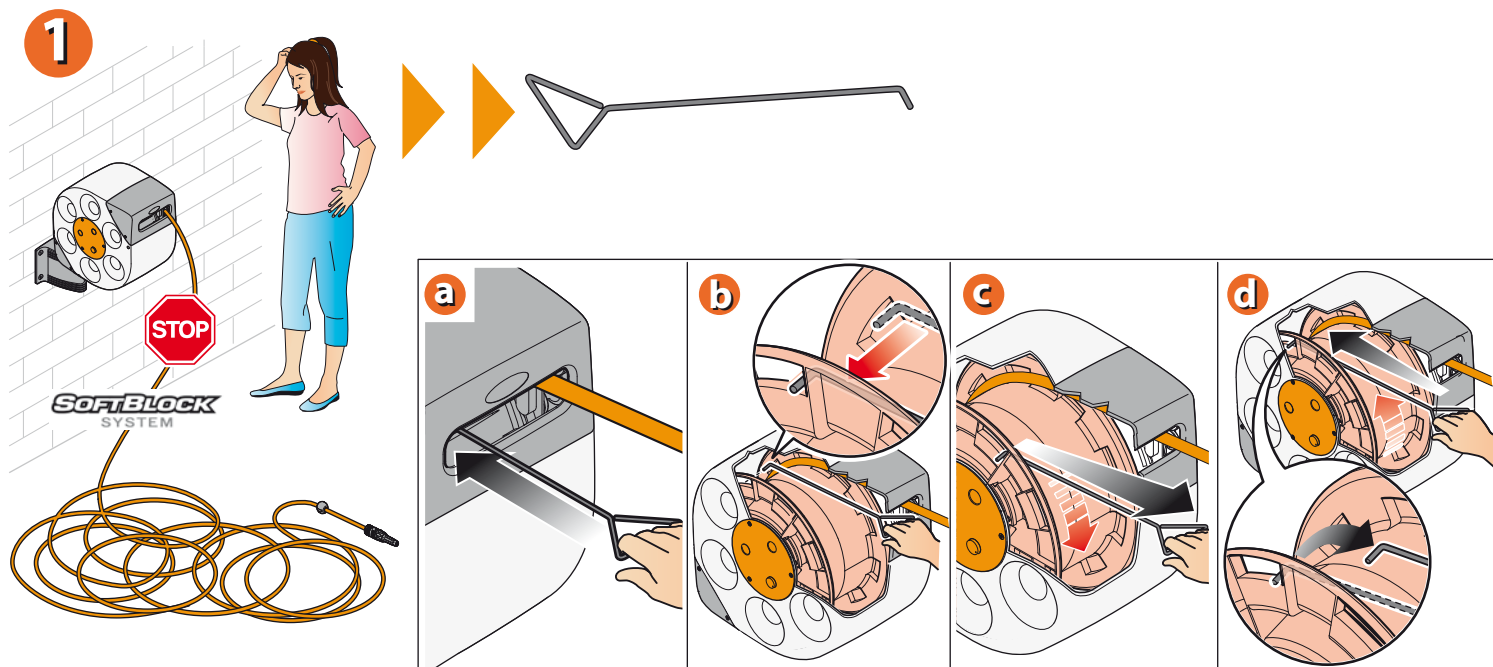
ROTOROLL MANUAL (code: 8986): this model has a manual guided reel system that is actioned by using the left-hand crank.



For Rotoroll (code): 8986

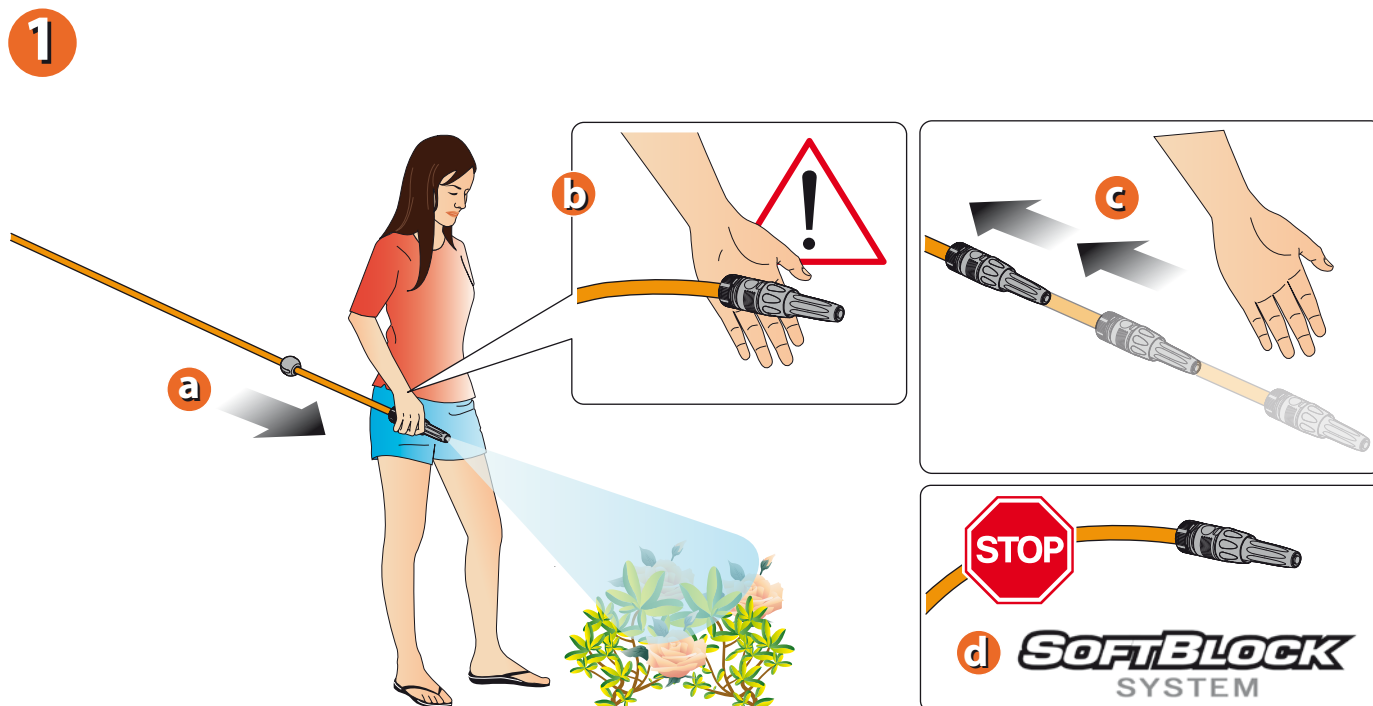
USE. Never forcefully unwind the hose to its full length. Should this occur, rewinding must be unlocked with the hook supplied, following the procedure in the drawing:

- Fully insert the hook into the hose exit slot, keeping the hook bend facing left.
- Hook one of the teeth of the drum casing.
- Pull the hook outwards as much as possible.
- Slowly release the hook inwards to allow unlocking. Slightly twist to the right to release and extract the hook from the slot. Extract the hook and normally wind up in the hose.



For Rotoroll (code): 8986 - 8988 - 8990

SAFETY! Thanks to the device **SOFTBLOCK SYSTEM**, the hose never gains speed when rewinding, thus avoiding risks of striking people, plants or objects.



For Rotoroll (code): 8986 - 8988 - 8990

MAINTENANCE.

