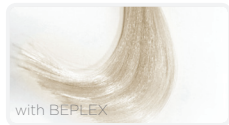
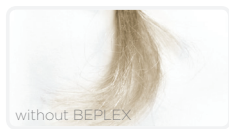


beplex

Blonde Multiplier

BLONDE HAIR, NO DAMAGE NOW IT'S POSSIBLE!

- Straighten the hair, adds shine and nourishment.
- Prevents breakage caused by colour process.
- Lighten the hair without further damage.
- Doesn't dilute the lightening process.




 fb.com/KeratinSolutions

 @KeratinSolutions


www.vierihairsolutions.com | +44 (0)7971 670 101

PUBLISHED BY VIERI HAIR SOLUTIONS LTD

HOW TO USE - BEPLEX KIT


1  Mix 50g lightening powder or 100g colour, with 100g developer.


2  Add 10g of 1 Step Protection Gel to the lightening or colour mix.


3  Apply it to the hair according to the desired technique, by following the directions for the use of lightening or color mix.



Allow the lightening colour mix to develop according to the manufacturer's directions, examining the integrity of the strands.

4  After the development time, wash the hair, with shampoo, then apply Step 2 Protection Mask (Mask Perfector).

5  Leave our for 5 to 10 minutes.

6  Rinse it off and finish as desired.