

BD_SW_7BC_37 Kawasaki ZX10 RR – 2021 on, 7 button multi-function – KIT ECU/Wiring
Handlebar race switch for ‘bar mount’ or direct clutch post mounting

This switch is designed for use on race/track bikes which are fitted with the factory KIT ECU and wiring

The aluminium assembly has been ergonomically designed for easy use and encompasses 7 momentary switches as described below with direct mounting onto the clutch post to save handlebar space.

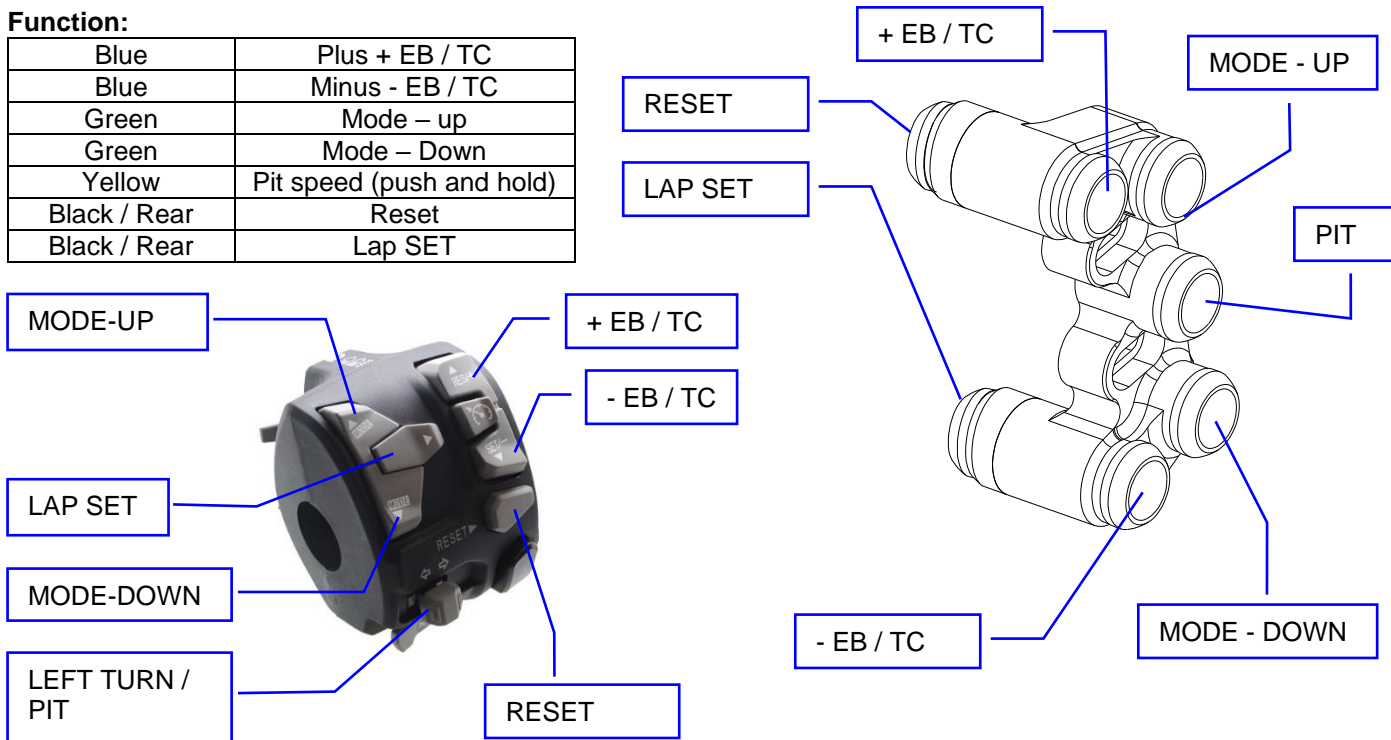
This unique design provides various mounting options giving the installer greater flexibility with other aftermarket products.

Use the two slotted M5 bolts to adjust left / right to best suit the rider.



Function:

Blue	Plus + EB / TC
Blue	Minus - EB / TC
Green	Mode – up
Green	Mode – Down
Yellow	Pit speed (push and hold)
Black / Rear	Reset
Black / Rear	Lap SET



NOTE : Throttle twist grip must be OPEN for the +/- EB/TC functions to work

Electrical / Mechanical Characteristics

Wire..... Type 55 / 24
 Switch sealing..... IP67
 Housing.....Aluminium

Coating.....Black anodise
 Wire length Same as standard

Ordering Information

Part No.	Connector	Description
BD-SW-7BC-37-G	Plug n Play	4 way handlebar switch to suit ZX10 RR 2021 onward, with generic 'bar mount' clamp See page 3 for other alternative mounting clamps

Electrical connection

No modification of the bike wiring is necessary, this kit plugs directly into the connectors of the bike. 100% 'plug and play'.

Mounting - These switches mount directly onto our own clutch post clamp and are adjustable left / right to suit the rider

Several clamps are available (see page 3 for all options but as standard we will supply the **CL-K** clamp to suit 36mm in-line clamp bolts as standard on the Kawasaki

Clamps are also sold separately so there is no need to replace the switch if you change your clutch post.



IMPORTANT
Tighten the UPPER bolt first to achieve metal to metal contact, then use the lower bolt to clamp onto the handlebar

1.0mm of gap – Used for tightening the clamp.
21.5 > 22.2mm dia bar

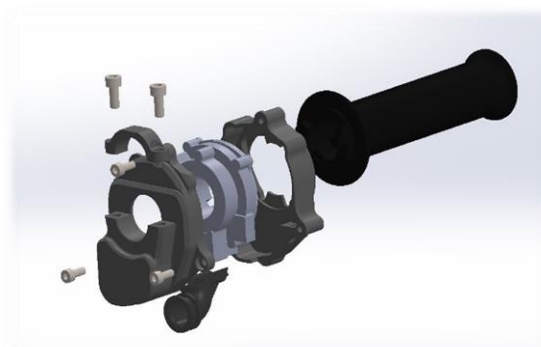
Matching right side products

BD-SW-4BC-36 This 4 way right switch provides the Stop/run, Start, Select functions as well as a spare latching on/off yellow switch for use with any rain light wiring on the bike.

This also clamps to the standard brake pump to save space on the bars with a choice of clamps to suit whatever brake pump you have fitted.



KT165 – Billet aluminium throttle housing to enclose the standard sensor element within a more compact and stronger casing. This product also eliminates the unusual negative free play in the standard housing.



Bike Sport Developments Ltd

The Old Barn, Greatworth Hall, Greatworth, Oxon, OX17 2DH - UK

Tel 0044 (0)1327 263942 – mail@bikesportdevelopments.co.uk / www.bikesportdevelopments.co.uk



Mounting - These switches mount directly onto our own clutch post clamp and are adjustable left / right to suit the rider, or the generic clamp supplied as the default option.

Several clamps are available, but as standard we will supply the **BR-G** clamp for direct mounting onto the handlebar or you can choose the CL-K to suit the standard 36mm spaced clutch post.

One clamp of your choice is supplied free of charge with each switch assembly.

Clamps

BR-G - Generic clamp as seen in the image below.

CL-A – To suit 32mm in-line clamp bolts

CL-B – To suit 30mm / 7mm offset bolts – Brembo XR , GP

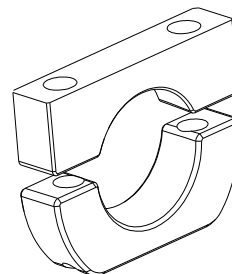
CL-F – To suit 30mm in-line bolts as found on Accosato / Hel clutch posts.

CL-K – To suit 36mm in-line on Kawasaki

CL-J – To suit 32mm / 6mm offset bolts on Beringer products

These clamp designs use far less space on the handlebar than conventional switch and are fully adjustable.

All clamps are angled towards the rider for improved ergonomics.



Type G
Generic clamp
left or right

