

BD_SW_7BC_37 Kawasaki ZX10 RR – 2021 onwards **7 button multi-function – KIT ECU/Wiring** **Handlebar race switch for ‘bar mount’ or direct clutch post mounting**

This switch is designed for use on race/track bikes which are fitted with the factory KIT ECU and wiring

The aluminium assembly has been ergonomically designed for easy use and encompasses 7 momentary switches as described below with direct mounting onto the clutch post to save handlebar space.

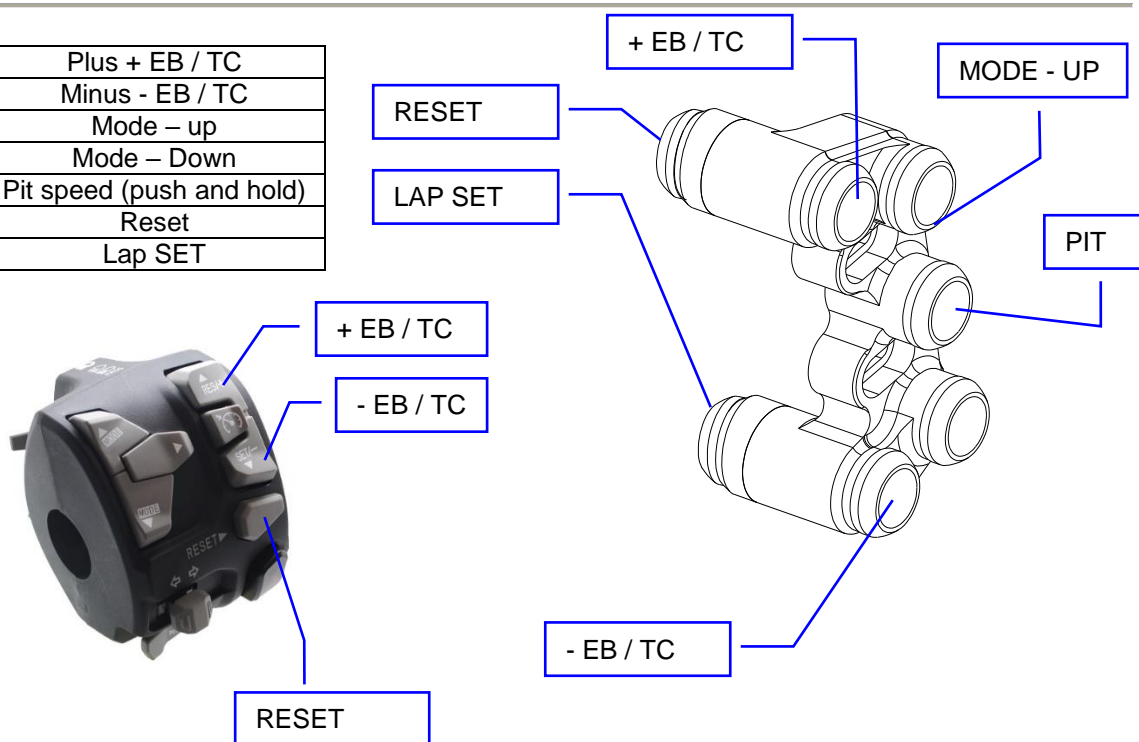
This unique design provides various mounting options giving the installer greater flexibility with other aftermarket products.

Use the two slotted M5 bolts to adjust left / right to best suit the rider.



Function:

Blue	Plus + EB / TC
Blue	Minus - EB / TC
Green	Mode – up
Green	Mode – Down
Yellow	Pit speed (push and hold)
Black / Rear	Reset
Black / Rear	Lap SET



NOTE : Throttle twist grip must be OPEN for the +/- EB/TC functions to work

Electrical / Mechanical Characteristics

Wire..... Type 55 / 24
Switch sealing..... IP67
Housing.....Aluminium

Coating.....Black anodise
Wire length Same as standard

Ordering Information

Part No.	Connector	Description
BD-SW-7BC-37-x	Plug n Play	7 way handlebar switch to suit ZX10 RR 2021 onward + Clamp x - Choose appropriate clamp from the parts listed on page 3. One free clamp per switch assembly


Electrical connection

No modification of the bike wiring is necessary, this kit plugs directly into the connectors of the bike. 100% 'plug and play'.

Mounting - These 'Type C' switches mount directly onto the clutch post using the two original clamp screws and a new dedicated clamp.

By default we supply the BR-G clamp to mount directly onto the handlebar as this provides the greatest versatility. Choose at the time of ordering via the pull down menu.

Clamps are also sold separately so there is no need to replace the switch if you change your clutch post.



IMPORTANT
Tighten the UPPER bolt first to achieve metal to metal contact, then use the lower bolt to clamp onto the handlebar

1.0mm of gap – Used for tightening the clamp.
21.5 > 22.2mm dia bar

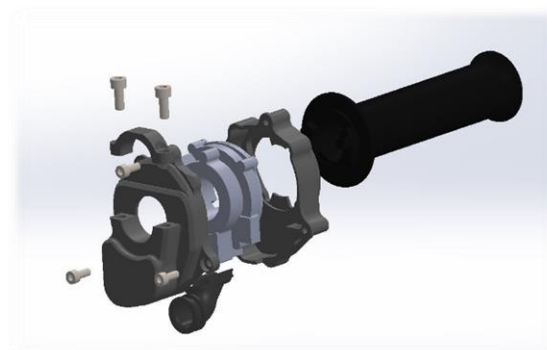
Matching right side products

BD-SW-4BC-36 This 4 way right switch provides the Stop/run, Start, Select functions as well as a spare latching on/off yellow switch for use with any rain light wiring on the bike.

This also clamps to the standard brake pump to save space on the bars with a choice of clamps to suit whatever brake pump you have fitted.



KT165 – Billet aluminium throttle housing to enclose the standard sensor element within a more compact and stronger casing. This product also eliminates the unusual negative free play in the standard housing.



Left side clutch clamps

Mounting - These 'Type C' switches can mount directly onto the clutch post using the two original clamp screws and a new dedicated clamp CL-K for Kawasaki, but as a default choice we will supply the BR-G as this offers the most versatility.

Clamps

CL-A – To suit 32mm in-line clamp bolts

CL-K – To suit 36mm in-line bolts as found on Kawasaki

CL-B – To suit 30mm offset bolts – Brembo XR , XA , GP

CL-F – To suit 30mm in-line bolts as found on Accosato / Hel

CL-J – To suit 32mm offset bolts as found on Beringer

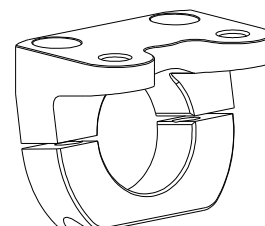
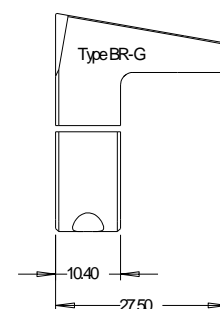
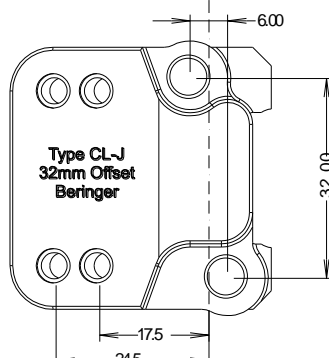
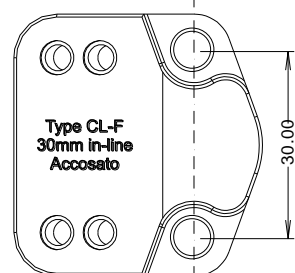
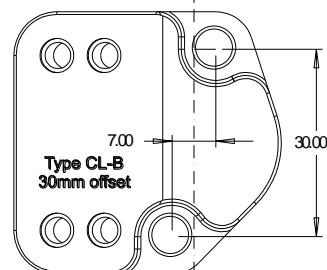
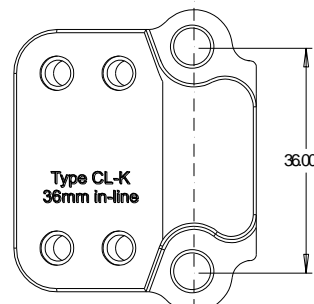
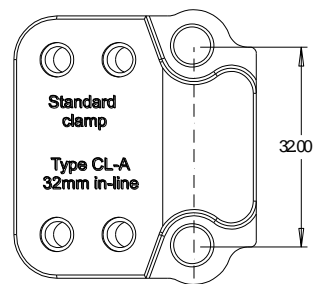
BR-G - Generic clamp for direct handlebar mounting.

These clamp designs use far less space on the handlebar than conventional switch bodies and are fully adjustable.

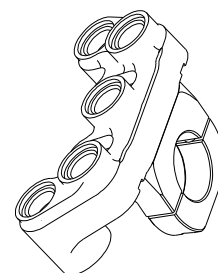
Mounting - These switches mount directly onto our own clutch post clamp and are adjustable left / right to suit the rider



0.5mm of gap – Used for tightening the clamp.
21.5 > 22.2mm dia bar



Type G
Generic clamp
Left or Right
Can be used with any
of our switch designs



Clamps are also sold separately so there is no need to replace the switch if you change your clutch post.

LEFT 