

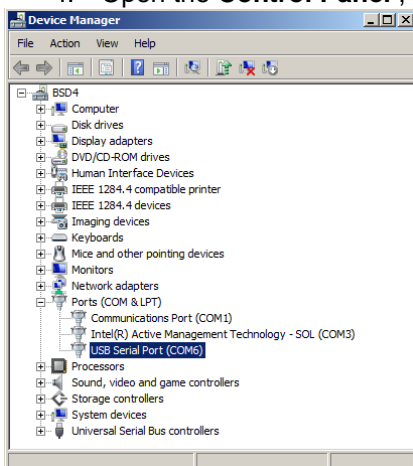
Download the software, drivers and installation manuals at:

www.bikesportdevelopments.co.uk/blipbox

Use code **UCIF** to make the download free

1. PC operating systems from Windows 7 to Windows 10 are OK to use. If you have an older PC with XP then please Email us for specific drivers.
2. Do Not plug in the USB cable at this stage.
3. Download and install the latest software which includes USB drivers and install this at the default location.
 - a. The USB drivers can be found in the USB Drivers folder of Win Blip
 - b. Now look in that folder to find the file called **CDM21224_Setup.exe**
 - c. Double click the exe file to run the new driver installation.
 - d. Re-start your PC.
 - e. Now plug in the USB adapter and wait for up to a minute (sometimes 2) for the drivers to install correctly.

4. Open the **Control Panel** , then look for the **System** icon , then **Device Manager** to view this window:

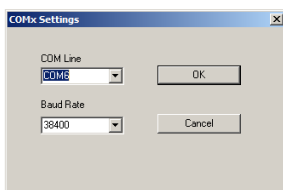


This icon shows that the USB adapter is installed and working.

Look at the COM number that has been allocated and make a note of this as it will be used in the WinBLIP software.

Note also that you may get a different COM number if using different USB ports on your PC, so try to use the same one each time.

5. Open WinBLIP and go to **Setup / COM settings** from the upper menu



It should look like this with the Baud Rate at 38400 and the COM line set to the one you noted in the Device manager.

If it does not, then use the pull down arrows to change things.

Then press **OK**

You should now have communication.

Notes:

In cases where there are still PC communication difficulties or Com Error, ensure you have used the default folder location for the software installation.

C:\Winblip\Blip Box....