

**BD-SW-3BC-09 Yamaha R1 2015 onwards,  
3 button Up, Down and Mode for standard ECU and wiring systems.  
For clutch post or handlebar clamp mounting.**

This 3 button switch is designed for use on race/track bikes with the standard ECU where lights, turn signals and horn are not needed.

The aluminium assembly has been ergonomically designed for easy use and encompasses 3 momentary switches as described below with direct mounting onto an adjustable angled handlebar clamp.

The offset design moves the SET function uppermost to ensure clearance when using a thumb brake below the handlebars. Use the two slotted M5 bolts to adjust left / right to best suit the rider.

No modification of the bike wiring is necessary, this kit plugs directly into the connectors of the standard loom and also provides wiring for the standard clutch switch.

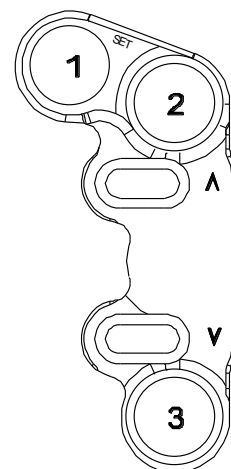
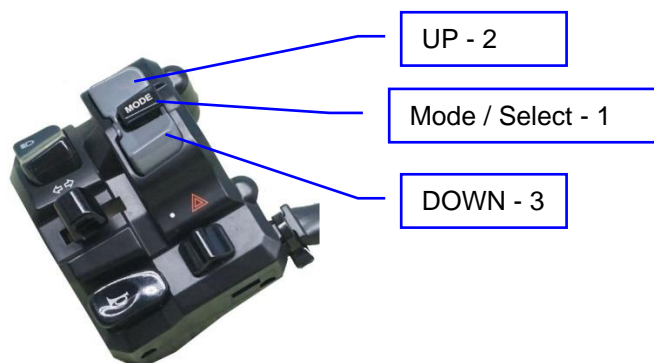
**Electrical connection**

No modification of the bike wiring is necessary, this kit plugs directly into the connectors of the standard loom.

**Note** – Clutch switch wiring is included

**Switch functions**

Colour	Text on switch	Function
Black	Λ	Dash control mode function switch - up
White	Select / Mode / Set	Dash control Mode / Select – Set function
Black	V	Dash control mode function switch - down

**Electrical / Mechanical Characteristics**

Wire..... Type 55 / 24  
Switch sealing..... IP67  
Housing..... Aluminium

Coating..... Black anodise  
Dia (handlebar) ..... 22mm (7/8")  
Wiring ..... Plug n play

**Ordering Information**

Part No.	Connector	Description
BD-SW-3BC-09-xx	Plug n Play	3 way left handlebar switch – Yamaha R1 – 2015 onwards xxx - Choose appropriate clamp from the parts listed on page 2. One free clamp per switch assembly

## Left side clutch clamps

**Mounting** - These 'Type C' switches mount directly onto the handlebar using our generic '2 piece' clamp BR-G. Or you can choose from any of the bolt mount clamps shown below to match aftermarket clutch posts.

### Clamps

**CL-A** – To suit 32mm in-line clamp bolts – To suit the standard clutch and Brembo RC

**CL-K** – To suit 36mm in-line bolts as found on Kawasaki

**CL-B** – To suit 30mm offset bolts – Brembo XR , XA , GP

**CL-F** – To suit 30mm in-line bolts as found on Accosato / Hel

**CL-J** – To suit 32mm offset bolts as found on Beringer

**BR-G** - Generic clamp for direct handlebar mounting.

We will supply clamp **BR-G** to suit the standard bike

These clamp designs use far less space on the handlebar than conventional switch bodies and are fully adjustable.

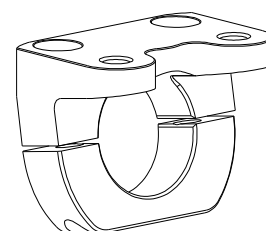
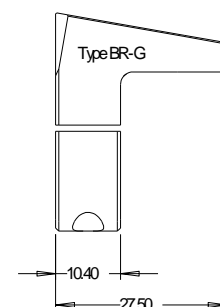
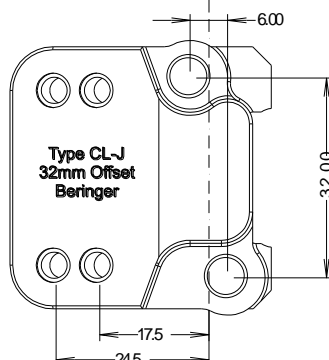
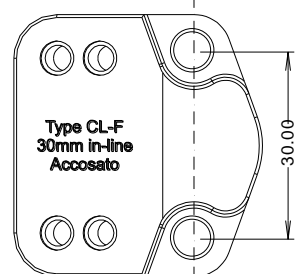
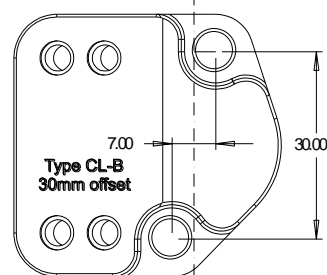
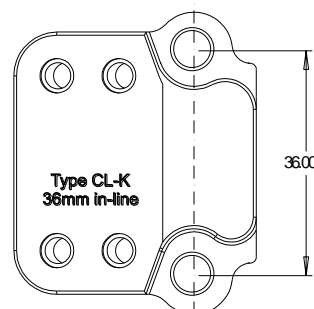
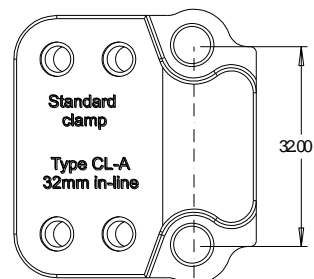
**Mounting** - These switches mount directly onto our own clutch post clamp and are adjustable left / right to suit the rider



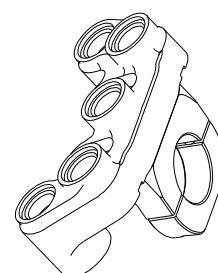
**0.5mm of gap** – Used for tightening the clamp.  
21.5 > 22.2mm dia bar

**IMPORTANT CL-A, CL-B, CL-K**  
Tighten the UPPER bolt first to achieve metal to metal contact, then use the lower bolt to clamp onto the handlebar

Clamps are also sold separately so there is no need to replace the switch if you change your clutch post.



**Type G**  
Generic clamp  
Left or Right  
Can be used with any  
of our switch designs



**LEFT** 