

BD_SW_7BC_45 Aprilia RSV4 2017 onward 1000cc and 1100cc left side race switch plus CAN interface – Multi-mode functionality

This 7 button switch is designed for use on race/track bikes where the road functions such as lights, turn signals and horn are not needed.

This unit also replaces the standard +/- flipper switches within this single unit.

Direct mount onto the handlebar via a 6mm slimline clamp, providing extra clearance for thumb brakes and brake adjusters

Wiring - No modification of the bike wiring is necessary, this kit plugs directly into the connectors of the standard loom via our CAN BUS interface which is programmed to be 100% compatible with the existing bike electronics, so no diagnostic warning lights

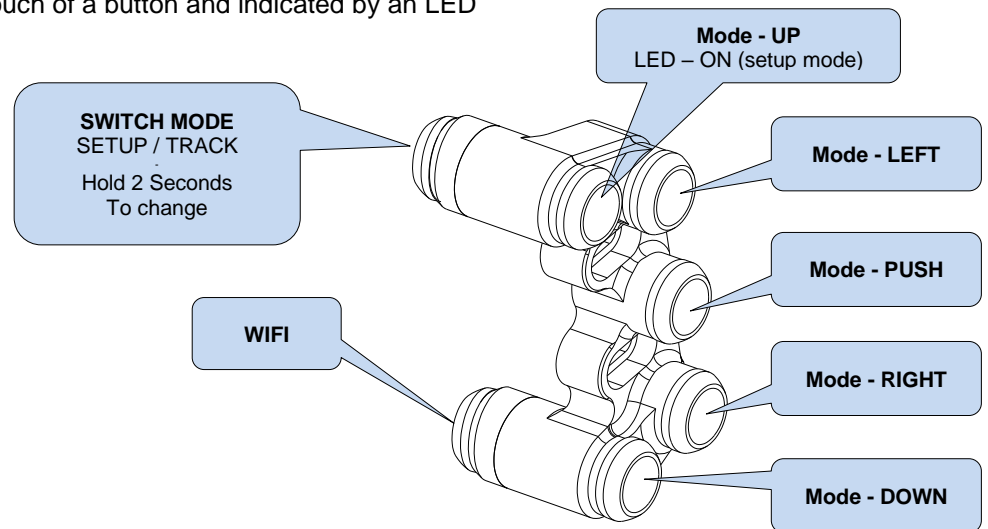


Dual Mode operation - The complexity of the standard switch assembly coupled with the flipper switches make the standard unit not ideally suited to the track.

Our solution was to use a contemporary layout that is familiar to track riders and split up the host of functions into two modes TRACK / SETUP that are switchable at the touch of a button and indicated by an LED

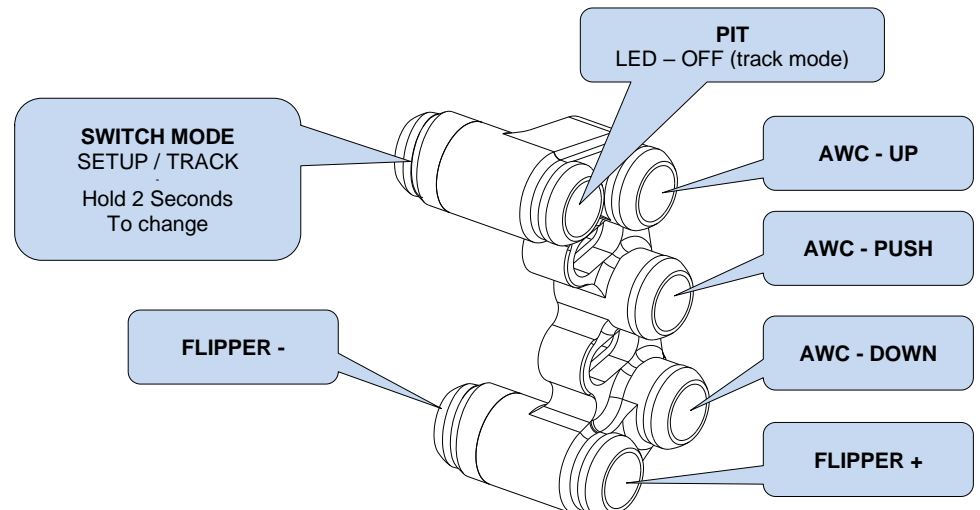
SETUP – In this mode a blue LED is ON and 6 button functions are allocated to:

- MODE - Navigate right
- MODE - Navigate left
- MODE – Navigate Up
- MODE – Navigate Down
- MODE – PUSH
- WIFI



TRACK – In this mode the LED is OFF and these same 6 button functions are allocated to functions needed on-track

- PIT
- AWC - UP
- AWC - PUSH
- AWC - DOWN
- FLIPPER +
- FLIPPER -



User notes:

At ignition ON the switch set is always in TRACK mode (LED off), if you see the LED ON, you are in SETUP mode which is not suitable for track riding.

The SETUP mode (LED-ON) automatically switches back to RIDER mode after 35 seconds. This ensures the RIDER functions are always available when on track, even if you forgot to turn off the SETUP mode

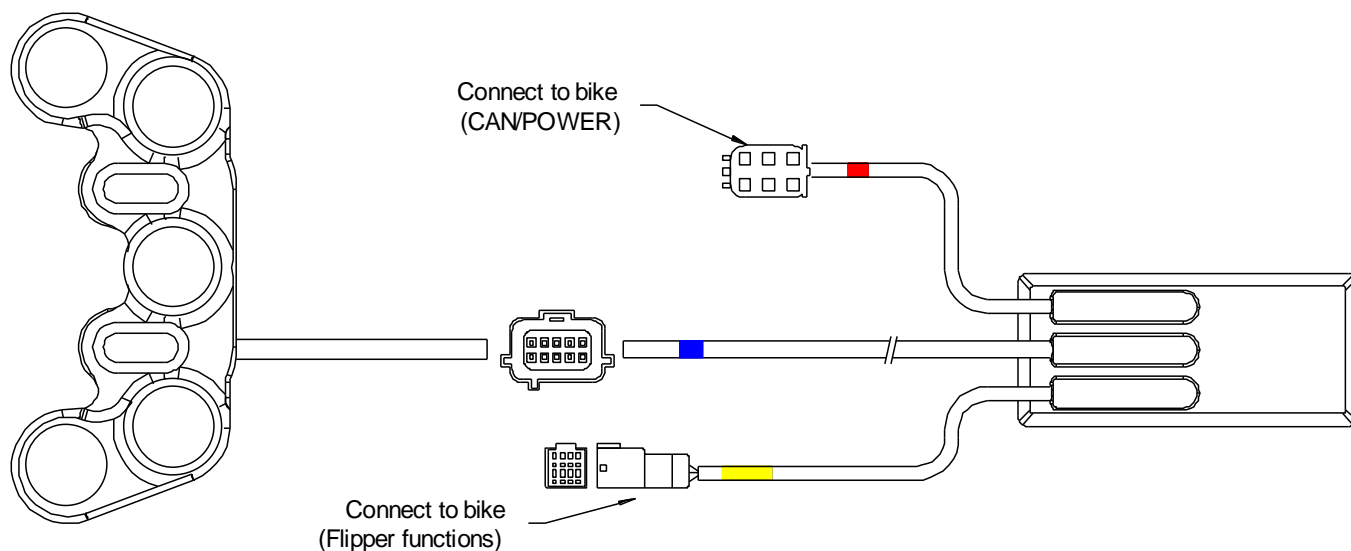
Electrical connection:

IMPORTANT : Always turn off the ignition and wait 2 minutes before disconnecting anything. This ensures the bike is fully turned off.

IMPORTANT : Always connect the switch assembly to the CAN module before turning on the bike ignition, without this you are likely to get a diagnostic error.

Your switch assembly is comprised of these components

- Switch assembly
- Switch mounting clamp of your choice
- CAN interface module



The CAN module may be fitted in any convenient location behind bodywork, No special mounting is needed.

Compatible right switch

BD-SW-2B_16
 Stop/Run , Start



Electrical / Mechanical Characteristics

Wire..... Type 55 / 24
 Switch sealing..... IP67
 Housing..... Aluminium

Coating..... Black anodise
 Dia (handlebar)22mm (7/8")
 Wiring..... Plug n play

Ordering Information

Part No.	Description
BD-SW-7BC-45-G	7 button left handlebar switch – Aprilia RSV4 2017 onward 1000cc / 1100cc Plus BR-G mount clamp ** See page 3 for other alternative switch mounting clamps

Mounting - These 'Type C' switches mount directly onto our own generic bar clamp 'BR-G' or any aftermarket clutch post. All are fully adjustable left / right to suit the rider

Clamps

CL-A – To suit 32mm in-line clamp bolts – To suit the standard clutch and Brembo RC

CL-B – To suit 30mm offset bolts – Brembo XR , XA , GP

CL-F – To suit 30mm in-line bolts as found on Accosato / Hel

CL-J – To suit 32mm offset bolts as found on Beringer

CL-K – To suit 36mm in-line bolts as found on Kawasaki

BR-G - Generic clamp for direct handlebar mounting.

We will supply clamp BR-G for handlebar mounting, or you can choose from any one of the above as a free alternative.

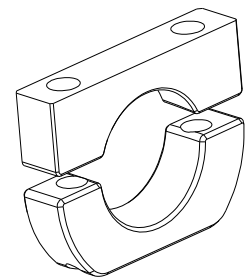
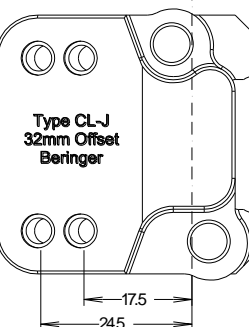
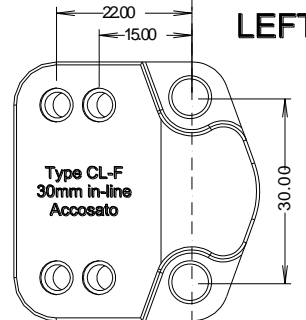
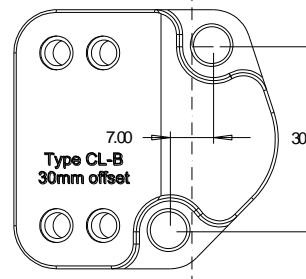
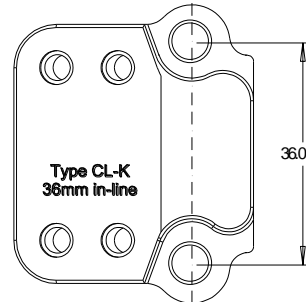
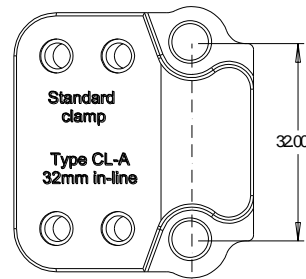
These clamp designs use far less space on the handlebar than conventional switch bodies and are fully adjustable.

Mounting (clutch post option) - These switches mount directly onto our own clutch post clamp and are adjustable left / right to suit the rider



0.5mm of gap – Used for tightening the clamp.
 21.5 > 22.2mm dia bar

IMPORTANT CL-A, CL-B, CL-K
 Tighten the UPPER bolt first to achieve metal to metal contact, then use the lower bolt to clamp onto the handlebar



Type G
 Generic clamp
 left or right

LEFT ←

Clamps are also sold separately so there is no need to replace the switch if you change your clutch post.