

BD_SW_5BC_20 Yamaha R1 2020 onwards
5 button right side – Stop/Run, Start, Up/Down, Select.
Handlebar race switch for bikes with standard or GYTR ECU
Plus billet throttle grip housing

This 5 button switch is designed for use on road or race bikes being fully compatible with the standard ECU as well as GYTR or re-flash versions.

Unlike other race switch products currently available that require 'selection direction changing switches' this 'micro-processor' controlled assembly has simple and intuitive Up / Select / Down push buttons to easily navigate the dash controls even with gloves on.



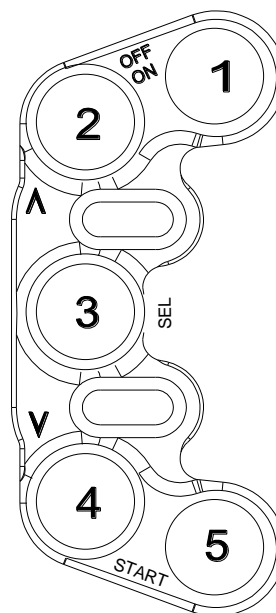
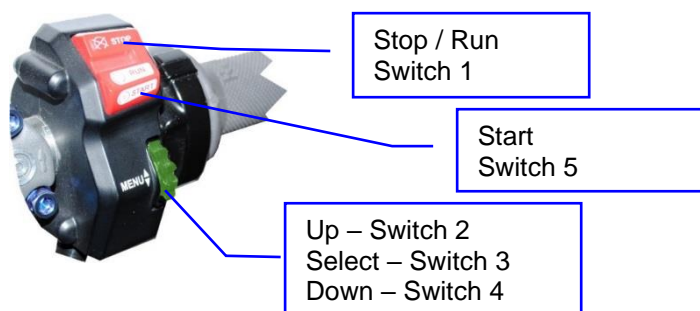
No modification of the bike wiring is necessary, this kit plugs directly into the connectors of the standard loom. The wiring loom is also in 2 parts ensuring that crash damaged switches can be repaired or replaced in a modular way, no need to replace everything.



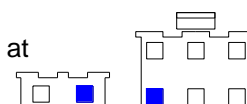
Kit includes: Right switch pod. Plug and play wiring. Brake adaptor clamp of your choice. Throttle grip housing – Billet aluminium

Switch functions

	Colour	Text on switch	Function
1	Red / Latching	OFF / ON	Stop / Run , push once for ON, and again for OFF
2	Black	^	Dash control – UP, single press per step
3	White	SEL	Push to select (same function as standard wheel)
4	Black	v	Dash control – DOWN, single press per step
5	Green / Momentary	START	Start – Engine start, push and hold



Brake switch wiring – For road bikes we can provide an addition section of wiring (on request at time of ordering). This plugs into the two spare connector locations highlighted in blue



Ordering Information

Part No.	Description
BD-SW-5BC-20-xxx	5 way right handlebar switch – Yamaha R1 – 2020 onwards – Complete right kit
xxx	Choose one clamp of your choice with each switch purchase, see page 2

Note – For road bikes with brake light switch please specify at the time of ordering 'Road Bike'

Right side brake clamps

Mounting

These switches mount directly onto our own brake pump clamp(s) and are adjustable left / right to suit the rider

Several clamps are available to suit most popular brakes

BR-A – 32mm in-line bolts as found on most standard bikes - Locates our switch to the right of the brake mount bolts – [Extra Info](#)

BR-N – 32mm in-line bolts – Locates our switch to the left of the brake mount bolts - [Extra Info](#)

BR-B – 30mm offset bolts to suit Brembo XR / GP brake pump

BR-F – 30mm in-line bolts to suit Accosato / Hel brake pump

BR-J – 32mm offset bolts to suit Beringer brake pump

BR-G - Generic clamp for direct handlebar mounting.

Specify your clamp at the time of ordering. Clamps are sold separately so there is no need to replace the switch if you change your brake pump.

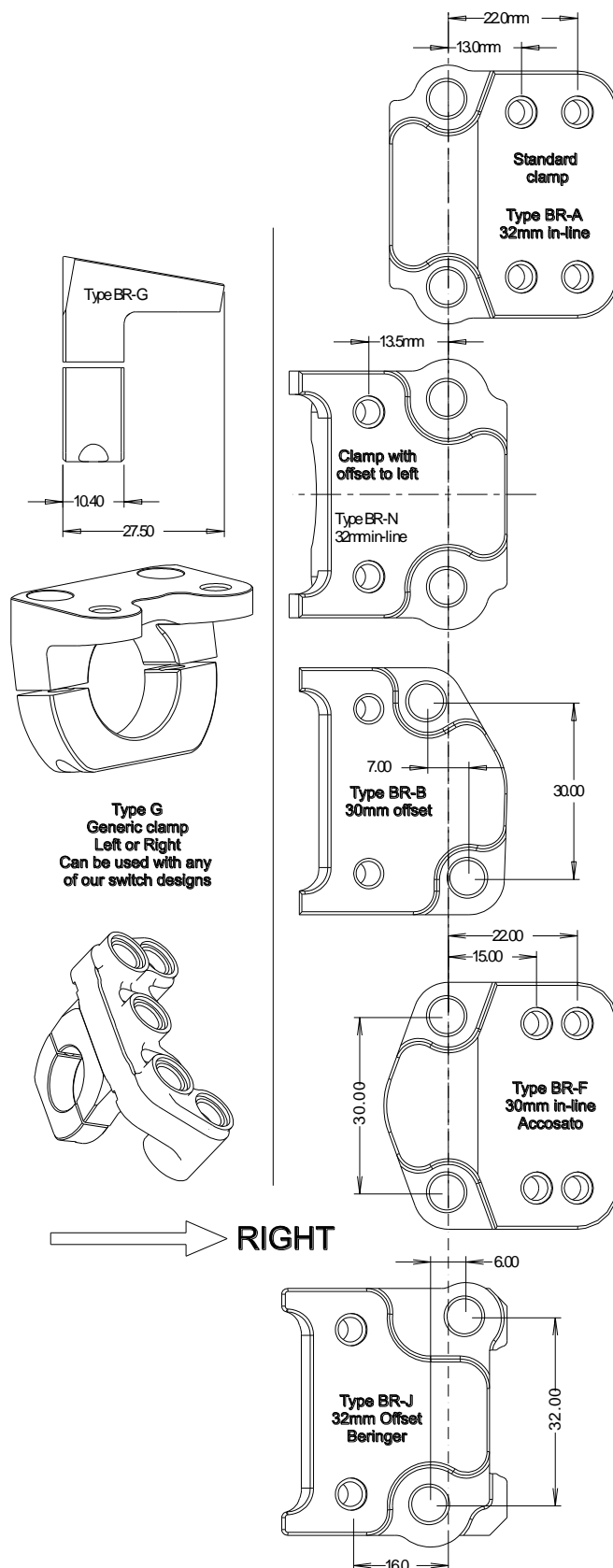
We will supply clamp **BR-A** to suit the standard brake, or you can choose from any one of the above as a free alternative.

IMPORTANT

Tighten the UPPER bolt first to achieve metal to metal contact, then use the lower bolt to clamp onto the handlebar – Except BR-F and BR-J which have equal gap for upper and lower



1.0mm of gap – Used for tightening the clamp.
21.5 > 22.2mm dia bar



Clamps are also sold separately so there is no need to replace the switch if you change your brake.