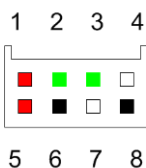


BD_SW_2B_26**Stop/Run – Start, 2 button handlebar race switch for Yamaha R3 up to 2018**

This switch is a direct replacement for the standard Start / Kill switch assembly found on the R3 up to the end of 2018

This strong aluminium assembly has been designed ultra-slim and encompasses a red latching switch for RUN/STOP and a black momentary switch for the starter motor.

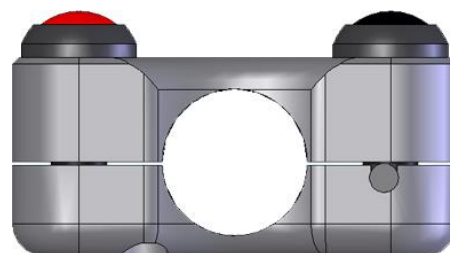
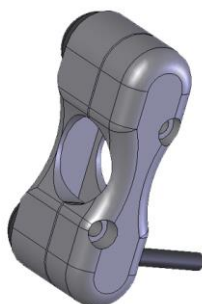
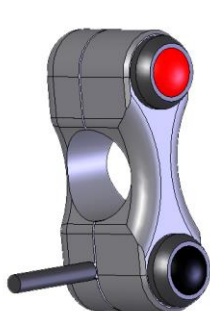
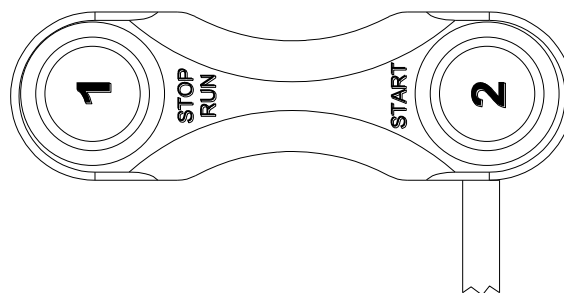
No modification of the bike wiring is necessary, this kit plugs directly into the 6 way connector of the standard loom.



The brake switch wiring is supplied loose with this product as most race bike owners do not need this feature. For road bikes this extra wiring can simply be plugged in at positions 6 and 8 highlighted in black here.

Function:

1	Red	Run / Stop	Latching
2	Green	Starter	Momentary

**Electrical / Mechanical Characteristics**

Wire..... Type 55 / 24
Switch sealing..... IP67
Housing..... Aluminium
Coating..... Black anodise

Dia (handlebar)22mm (7/8")
Max width 20.5 mm
Min width at centre 13.5 mm
Weight 85 g

Ordering Information

Part No.	Connector	Cable	Description
BD-SW-2B-26	See image	680mm	2 way handlebar switch for Start / Kill – Yamaha R3 up to 2018