

**BD_SW_3BC_82 Suzuki 8R - 2024 onward, 3 button , Up , Down , Select
 Left handlebar race switch for the standard ECU and wiring
 Direct bar clamp mount**

This switch is designed for use on race/track bikes fitted with a standard ECU and wiring where only the vital left switch functions are needed

The aluminium assembly has been ergonomically designed for easy use and encompasses 3 momentary switches as described below with direct mounting onto the handlebar via the generic 22mm clamp

Use the two slotted M5 bolts to adjust left / right to best suit the rider.

No modification of the bike wiring is necessary.

No electrical connection

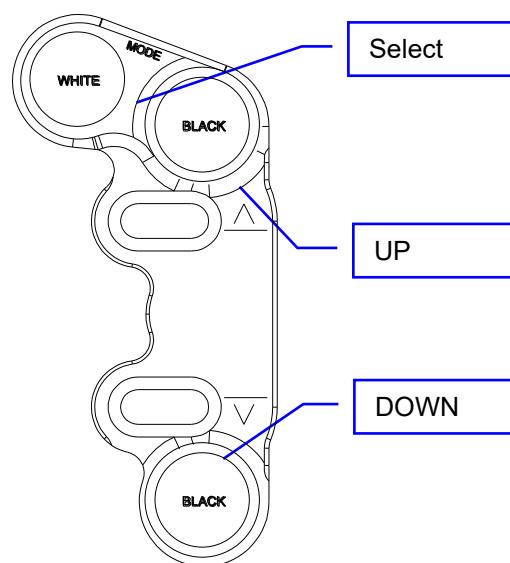
No modification of the bike wiring is necessary, this kit plugs directly into the connectors of the standard loom.

Note – Clutch switch wiring is included



Function:

1	White	Mode function
2	Black	UP function
4	Black	DOWN function



Electrical / Mechanical Characteristics

Wire..... Type 55 / 24
 Switch sealing IP67
 Housing.....Aluminium

CoatingBlack anodise
 Dia (handlebar)22mm (7/8")
 Wire length Same as standard

Ordering Information

Part No.	Connector	Description
BD-SW-3BC-82-xxx	Plug n Play	3 way handlebar switch to suit Suzuki 8R – 2024 onwards + choice of clamp xxx - Choose appropriate clamp from the parts listed on page 2. One free clamp per switch assembly

Left side clutch clamps

Mounting - These 'Type C' switches mount directly onto the handlebar using our generic '2 piece' clamp BR-G. Or you can choose from any of the bolt mount clamps shown below to match aftermarket clutch posts.

Clamps

CL-A – To suit 32mm in-line clamp bolts – To suit the standard clutch and Brembo RC

CL-K – To suit 36mm in-line bolts as found on Kawasaki

CL-B – To suit 30mm offset bolts – Brembo XR , XA , GP

CL-F – To suit 30mm in-line bolts as found on Accosato / Hel

CL-J – To suit 32mm offset bolts as found on Beringer

BR-G - Generic clamp for direct handlebar mounting.

We will supply clamp **BR-G** to suit the standard bike

These clamp designs use far less space on the handlebar than conventional switch bodies and are fully adjustable.

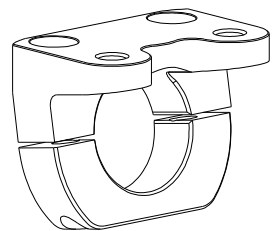
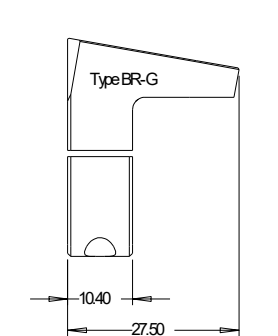
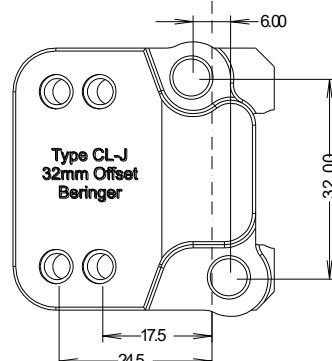
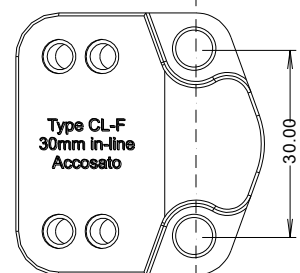
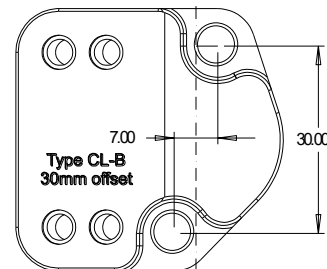
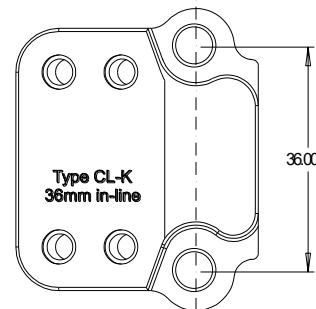
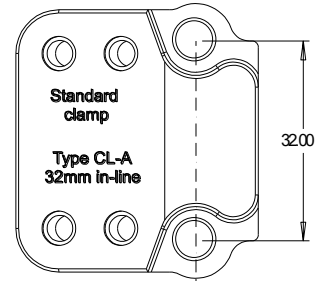
Mounting - These switches mount directly onto our own clutch post clamp and are adjustable left / right to suit the rider



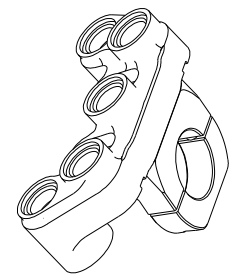
0.5mm of gap – Used for tightening the clamp.
 $21.5 > 22.2\text{mm}$ dia bar

IMPORTANT CL-A, CL-B, CL-K
 Tighten the UPPER bolt first to achieve metal to metal contact, then use the lower bolt to clamp onto the handlebar

Clamps are also sold separately so there is no need to replace the switch if you change your clutch post.



Type G
 Generic clamp
 Left or Right
 Can be used with any of our switch designs



LEFT ←