

BD_SW_5BC_08**Yamaha R1 2015 > 2019****5 button - Up, Down, Mode, Pit Speed, Map switch
For clutch post or handlebar clamp mounting.
Handlebar race switch for bikes with GYTR ECU**

This 5 button switch is designed for use on race/track bikes with the GYTR Kit ECU and wiring loom.

The aluminium assembly has been ergonomically designed for easy use and encompasses 5 switches as described below.

Use the two slotted M5 bolts to adjust left / right to best suit the rider.

No modification of the bike wiring is necessary, this kit plugs directly into the connectors of the standard loom and also provides wiring for the standard clutch switch

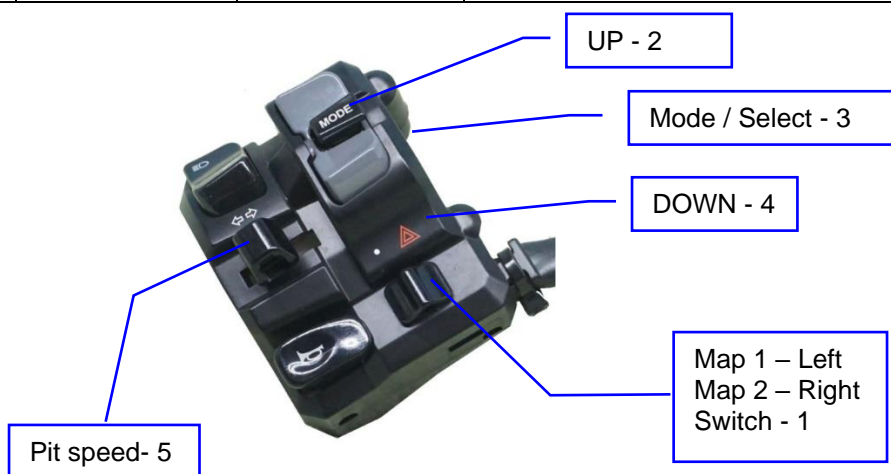
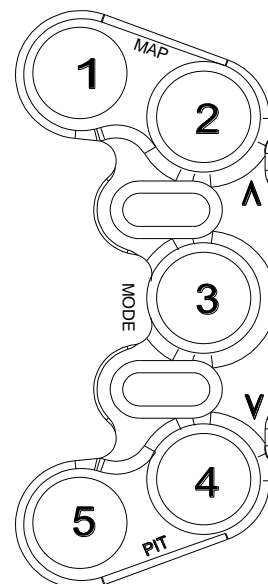
**Electrical connection**

No modification of the bike wiring is necessary, this kit plugs directly into the connectors of the standard loom.

Note – Clutch switch wiring is included

Switch functions

	Colour	Text on switch	Function
1	Green / Latching	Map	Map select , push once for map 2, and again for 1
2	Black	Λ	Dash control mode function switch - up
3	White	Select / Mode	Dash control Mode / Select function
4	Black	V	Dash control mode function switch - down
5	Blue	Pit speed	Pit speed limiter – push and hold

**Ordering Information**

Part No.	Connector	Description
BD-SW-5BC-08-xx	Plug n play	5 way handlebar switch – Yamaha R1 – 2015 > 2019 - GYTR xx – Choose one clamp from those listed on page 2

Left side clutch clamps

Mounting - These 'Type C' switches mount directly onto the handlebar using our generic '2 piece' clamp BR-G. Or you can choose from any of the bolt mount clamps shown below to match aftermarket clutch posts.

Clamps

CL-A – To suit 32mm in-line clamp bolts – To suit the standard clutch and Brembo RC

CL-K – To suit 36mm in-line bolts as found on Kawasaki

CL-B – To suit 30mm offset bolts – Brembo XR , XA , GP

CL-F – To suit 30mm in-line bolts as found on Accosato / Hel

CL-J – To suit 32mm offset bolts as found on Beringer

BR-G - Generic clamp for direct handlebar mounting.

We will supply clamp **BR-G** to suit the standard bike

These clamp designs use far less space on the handlebar than conventional switch bodies and are fully adjustable.

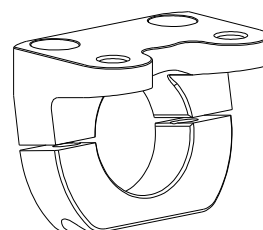
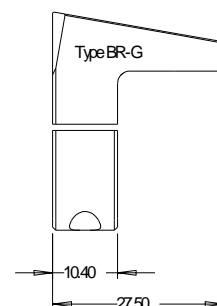
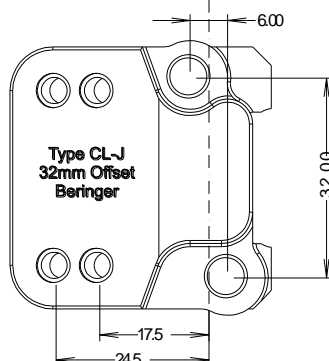
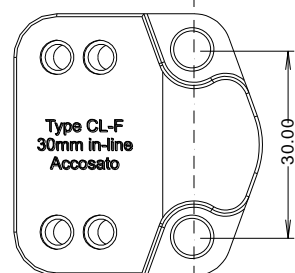
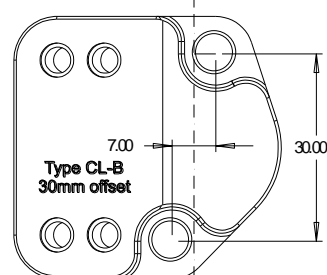
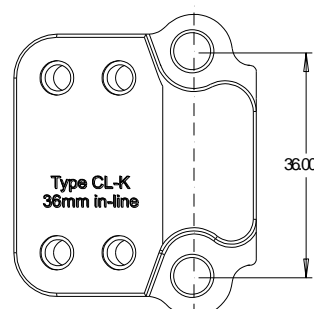
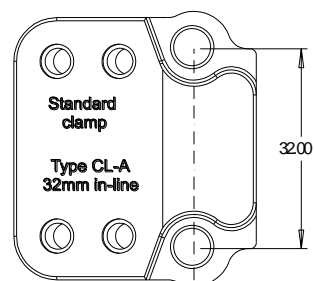
Mounting - These switches mount directly onto our own clutch post clamp and are adjustable left / right to suit the rider



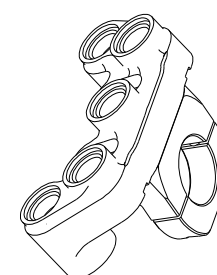
0.5mm of gap – Used for tightening the clamp.
21.5 > 22.2mm dia bar

IMPORTANT CL-A, CL-B, CL-K
Tighten the UPPER bolt first to achieve metal to metal contact, then use the lower bolt to clamp onto the handlebar

Clamps are also sold separately so there is no need to replace the switch if you change your clutch post.



Type G
Generic clamp
Left or Right
Can be used with any of our switch designs



LEFT ←