

**BD_SW_4BC_13 Suzuki GSXR1000 - 2017 , 4 button , Up , Down , Select , Pit Speed
Left handlebar race switches for a Re-Flashed standard ECU
Handlebar race switch for direct bar clamp mount**

This switch is designed for use on race/track bikes fitted with a re-flashed standard ECU enabling the pit speed function

The aluminium assembly has been ergonomically designed for easy use and encompasses 4 momentary switches as described below with direct mounting onto the handlebar via the generic 22mm clamp

The offset design moves the **PIT** function uppermost to ensure clearance when using a thumb brake below the handlebars.

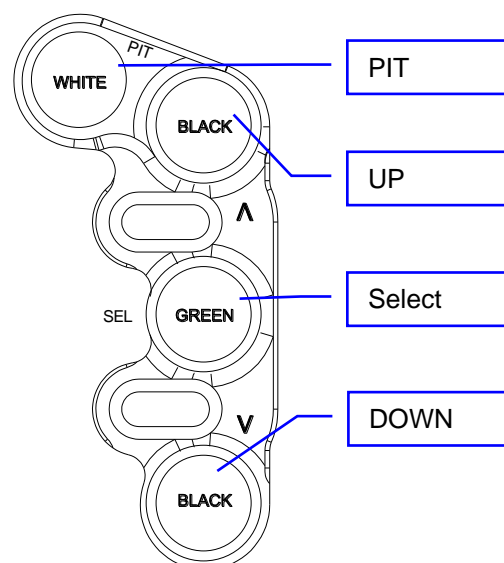
**Electrical connection**

No modification of the bike wiring is necessary for the standard functions, this kit plugs directly into the connectors of the standard loom. Clutch switch wiring is included

PIT : There are 2 unused wires for linking up by the installer to the chosen input for pit speed limiting. These are not pre-wired

Function:

1	White	PIT Speed limit
2	Black	UP function
3	Green	Select (Mode) function
4	Black	DOWN function

**Electrical / Mechanical Characteristics**

Wire..... Type 55 / 24
Switch sealing..... IP67
Housing..... Aluminium

Coating.....Black anodise
Dia (handlebar)22mm (7/8")
Wire length Same as standard

Ordering Information

Part No.	Connector	Description
BD-SW-4BC-13-xxx	Plug n Play	4 way handlebar switch to suit GSXR1000 with standard ECU – 2017 onwards + Clamp xxx - Choose one clamp of your choice with each switch purchase, see page 2

Left side clutch clamps

Mounting - These 'Type C' switches mount directly onto the handlebar using our generic '2 piece' clamp BR-G. Or you can choose from any of the bolt mount clamps shown below to match aftermarket clutch posts.

Clamps

CL-A – To suit 32mm in-line clamp bolts

CL-K – To suit 36mm in-line bolts as found on Kawasaki

CL-B – To suit 30mm offset bolts – Brembo XR , XA , GP

CL-F – To suit 30mm in-line bolts as found on Accosato / Hel

CL-J – To suit 32mm offset bolts as found on Beringer

BR-G - Generic clamp for direct handlebar mounting.

We will supply clamp **BR-G** to suit the standard bike

These clamp designs use far less space on the handlebar than conventional switch bodies and are fully adjustable.

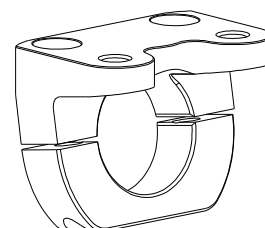
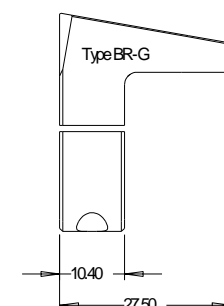
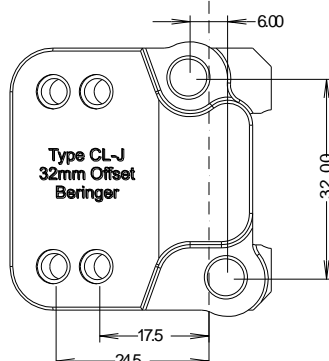
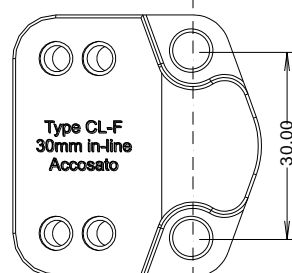
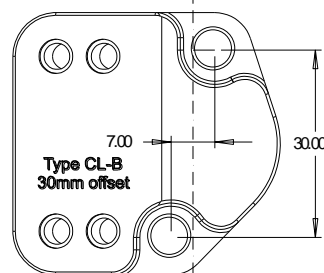
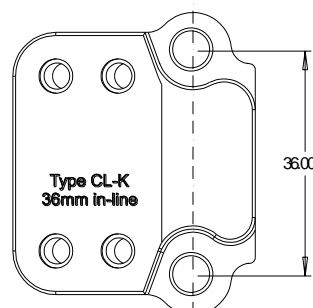
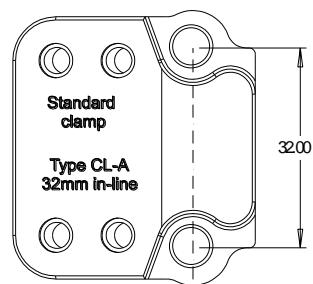
Mounting - These switches mount directly onto our own clutch post clamp and are adjustable left / right to suit the rider



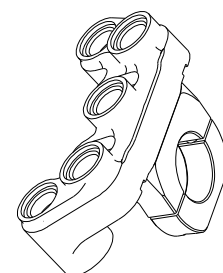
0.5mm of gap – Used for tightening the clamp.
21.5 > 22.2mm dia bar

IMPORTANT CL-A, CL-B, CL-K
Tighten the UPPER bolt first to achieve metal to metal contact, then use the lower bolt to clamp onto the handlebar

Clamps are also sold separately so there is no need to replace the switch if you change your clutch post.



Type G
Generic clamp
Left or Right
Can be used with any
of our switch designs



LEFT 