

**BD\_SW\_2BC\_04**

**Start / Kill 2 button handlebar race switches for Ducati Panigale 899 , 959 , 1199 , 1299 , SL**

This switch is a direct replacement for the standard Start / Kill switch assembly found on the Ducati Panigale

This aluminium assembly has been designed ultra-slim and encompasses a red latching switch for RUN/STOP and a black momentary switch for the starter motor.

No modification of the bike wiring is necessary, this kit plugs directly into the 4 way connector of the standard loom.

Type 'C' switches mount directly onto the brake pump body using the two original clamp screws and a new dedicated clamp.

The clamp is supplied as a separate component with the default clamp matching the bolt pattern of the standard brake pump (master cylinder), but you are free to choose an alternative clamp at the time of ordering at no extra cost.



We have clamps for:

- BR-A 32mm in-line bolt spacing - Standard**
- BR-B 30mm offset bolt spacing – Brembo XR
- BR-N 32mm in-line with a left offset for short brake levers (typically Nissin / Brembo RC / RCS)
- BR-F 30mm in-line as found on Accosato brake parts
- BR-G Generic clamp for any 21.8 > 22.2 mm handlebar (does not mount on the brake pump)
- BR-G Offset clamp specifically for Beringer

Unless otherwise specified we will supply the BR-A clamp for this application.

Clamps may be bought separately should you change this part at a future time, there is no need to replace the switch assembly

Perfect for saving space on the handlebar yet retaining left / right adjustment via slotted bolt holes.

**Function:**

|   |       |            |           |
|---|-------|------------|-----------|
| 1 | Red   | Run / Stop | Latching  |
| 2 | Green | Starter    | Momentary |

**Ordering Information**

| Part No.     | Cable | Description   |
|--------------|-------|---|
| BD-SW-2BC-04 | 390mm | 2 way handlebar switch for Start / Kill – Ducati Panigale |

**Mounting** - These 'Type C' switches mount directly onto the original clutch assembly replacing the standard 2 bolt clamp with our new clamp. This also provides a mount for the switch assembly which is then adjustable left/right via slotted holes.

**Clamps**

**CL-A** – To suit 32mm in-line clamp bolts – To suit the standard clutch and Brembo RC

**CL-B** – To suit 30mm offset bolts – Brembo XR , XA , GP

**CL-F** – To suit 30mm in-line bolts as found on Accosato / Hel

**CL-J** – To suit 32mm offset bolts as found on Beringer

**CL-K** – To suit 36mm in-line bolts as found on Kawasaki

**BR-G** - Generic clamp for direct handlebar mounting.

We will supply clamp CL-A to suit the standard clutch, or you can choose from any one of the above as a free alternative.

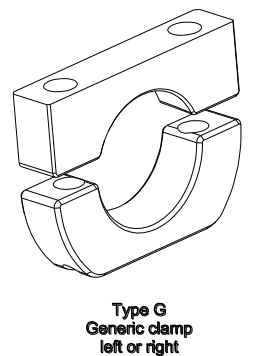
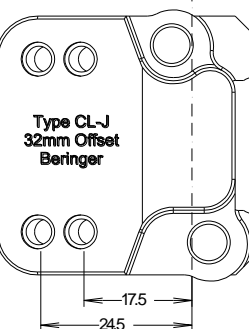
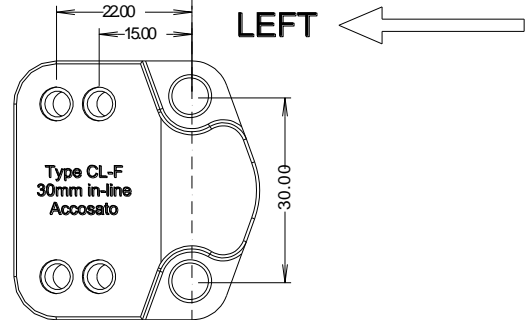
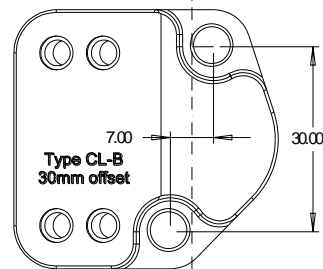
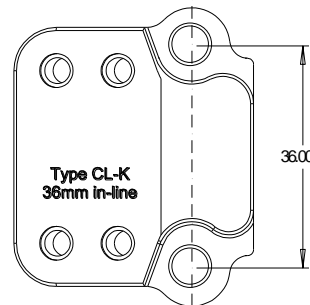
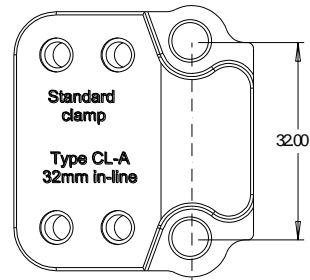
These clamp designs use far less space on the handlebar than conventional switch bodies and are fully adjustable.

**Mounting** - These switches mount directly onto our own clutch post clamp and are adjustable left / right to suit the rider



**0.5mm of gap** – Used for tightening the clamp.  
 21.5 > 22.2mm dia bar

**IMPORTANT CL-A, CL-B, CL-K**  
 Tighten the UPPER bolt first to achieve metal to metal contact, then use the lower bolt to clamp onto the handlebar



Clamps are also sold separately so there is no need to replace the switch if you change your clutch post.