

BD-SW-6BC-42 HONDA CBR1000 RR , 2020 onwards, race switch set + control module
For clutch post or handlebar clamp mounting.
Standard ECU and wiring systems, includes SP Model

This left switch assembly is designed specifically for use on the CBR1000 RR (and SP) equipped with a standard ECU and wiring system. Comprising a 6 function left switch and an interface module.

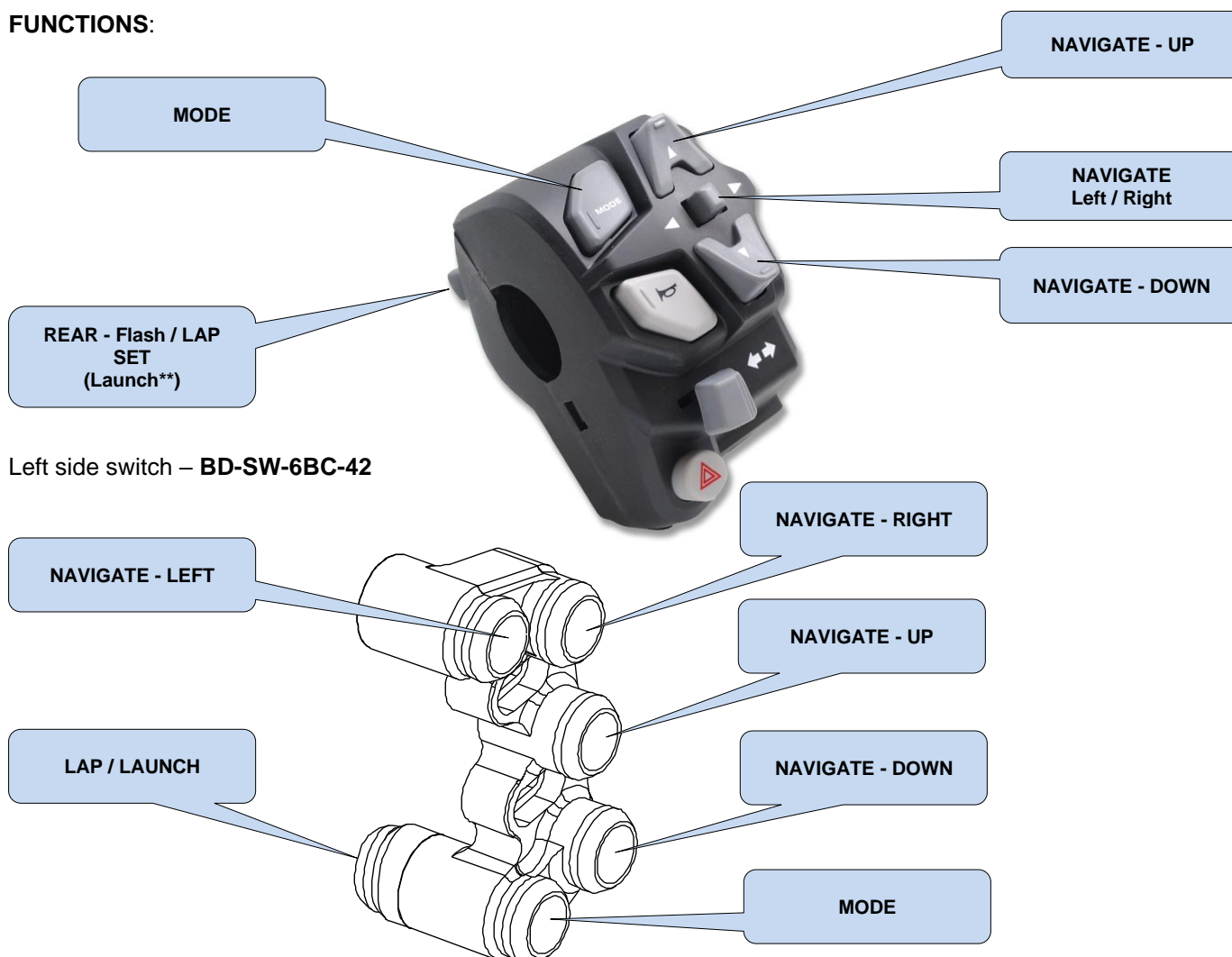
Left side - Direct mount onto the handlebar via our generic 22mm clamp or onto the clutch post to save handlebar space, this provides extra clearance for thumb brakes and brake adjusters. Choose your preference when ordering – page 3



Wiring - No modification of the bike wiring is necessary; this kit plugs directly into the connectors of the standard wiring loom

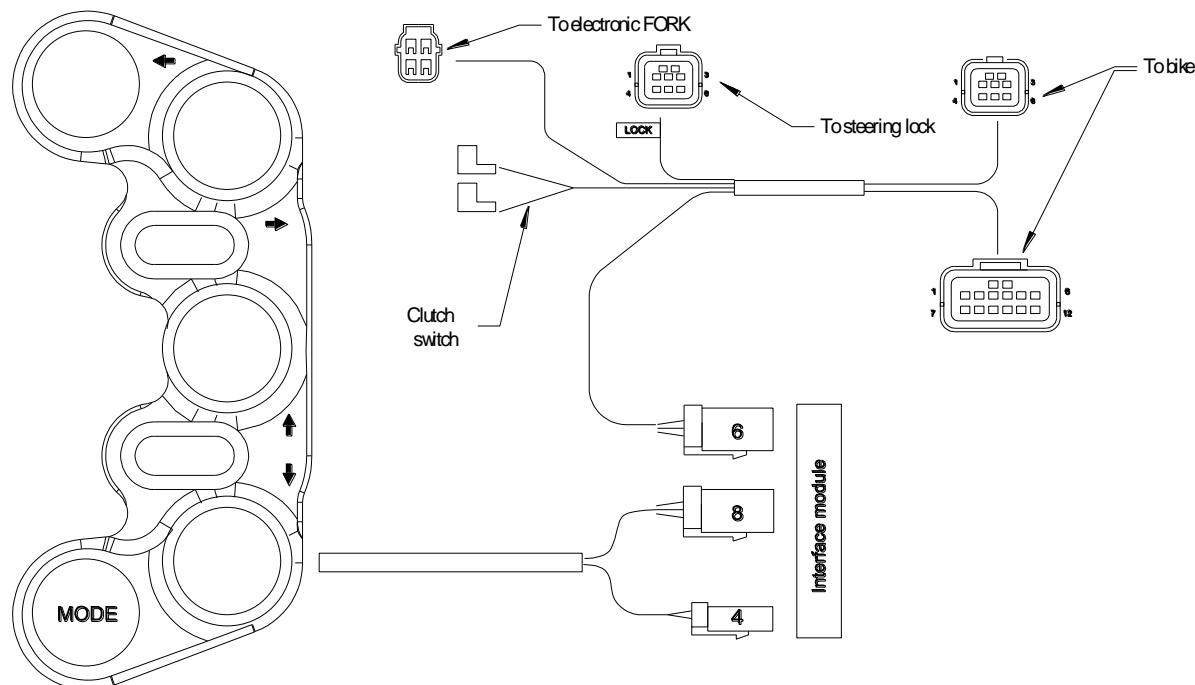
HRC kit – For switch assemblies to suit the HRC kit, please see our alternative products.

FUNCTIONS:



Left side switch – **BD-SW-6BC-42**

Electrical connection:



Wiring - No modification of the bike wiring is necessary; this kit plugs directly into the connectors of the standard wiring loom

IMPORTANT – There are two 6 way connectors on the adaptor wiring loom we supply, be careful to connect the steering lock to the correct one, it is labelled

Locate the small control module in any convenient position.

SP Model : This bike uses the 4 way connector for the electronic forks, for non-SP models simply tuck this wire out of the way as it is not needed.

Ordering Information

Part No.	Description
BD-SW-6BC-42-xxx	Honda CBR1000 RR left switch set for standard ECU and wiring – 2020 onward xxx - Choose appropriate clamp from the parts listed on page 3. One free clamp per switch assembly xxx – Unless otherwise specified we will supply the BR-G clamp

Left side clutch clamps

Mounting - These 'Type C' switches mount directly onto the handlebar using our generic '2 piece' clamp. Or you can choose from any of the bolt mount clamps shown below to match aftermarket clutch posts.

Clamps

CL-A – To suit 32mm in-line clamp bolts – To suit the standard clutch and Brembo RC

CL-K – To suit 36mm in-line bolts as found on Kawasaki

CL-B – To suit 30mm offset bolts – Brembo XR , XA , GP

CL-F – To suit 30mm in-line bolts as found on Accosato / Hel

CL-J – To suit 32mm offset bolts as found on Beringer

BR-G - Generic clamp for direct handlebar mounting.

We will supply clamp **BR-G** to suit the standard bike

These clamp designs use far less space on the handlebar than conventional switch bodies and are fully adjustable.

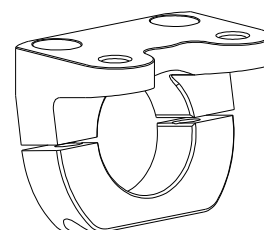
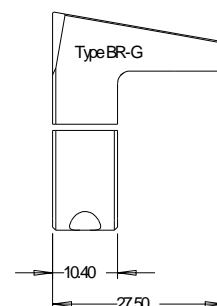
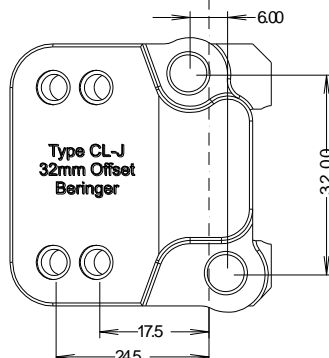
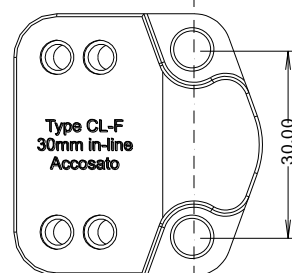
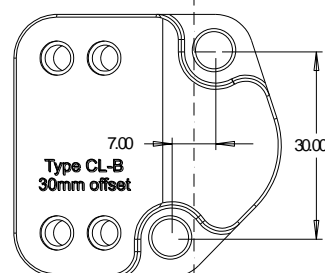
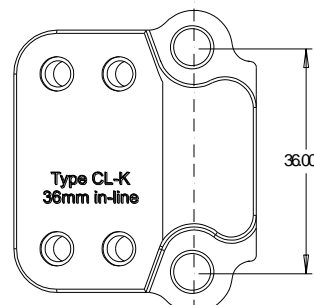
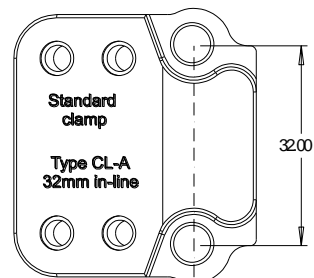
Mounting - These switches mount directly onto our own clutch post clamp and are adjustable left / right to suit the rider



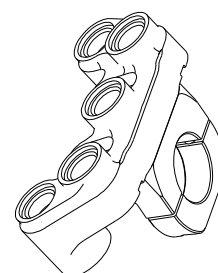
0.5mm of gap – Used for tightening the clamp.
21.5 > 22.2mm dia bar

IMPORTANT CL-A, CL-B, CL-K
Tighten the UPPER bolt first to achieve metal to metal contact, then use the lower bolt to clamp onto the handlebar

Clamps are also sold separately so there is no need to replace the switch if you change your clutch post.



Type G
Generic clamp
Left or Right
Can be used with any of our switch designs



LEFT ←