

EARTHBORN RANGERS® INSERT

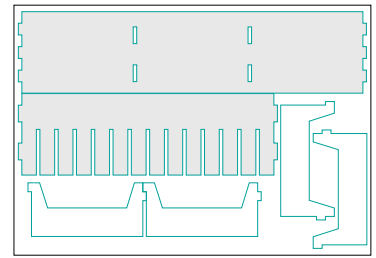
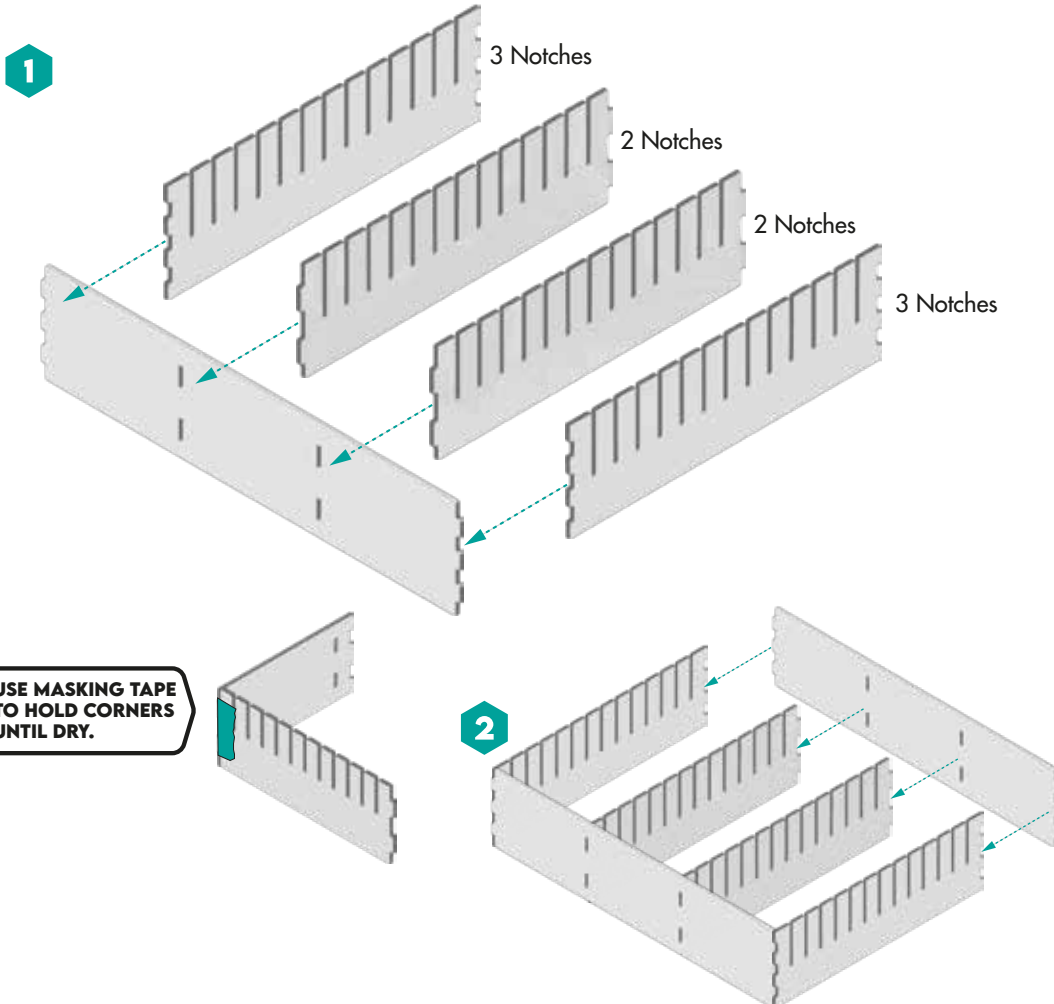
Compatible with Earthborn Rangers® core box that measures 320 x 240x 84mm. This insert maximises the internal space for card storage.



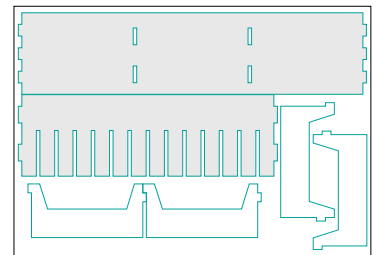
Required to build this insert:

- Masking tape and/or rubber bands.
- PVA wood glue (use on all connecting joints shown below.)
- Kitchen roll/tissue paper to dry and wipe.
- Small pot of water to rinse brush.
- Patience (please don't rush!)

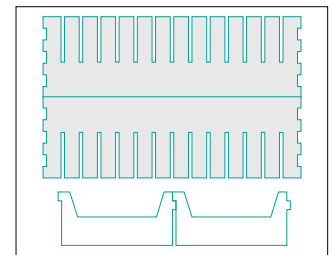
Lay a mat down to protect the surface you are building this on from glue.



INS-EBR-1/4



INS-EBR-3/4

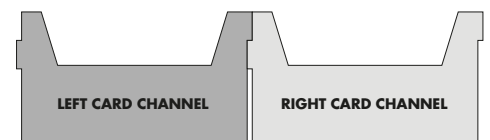
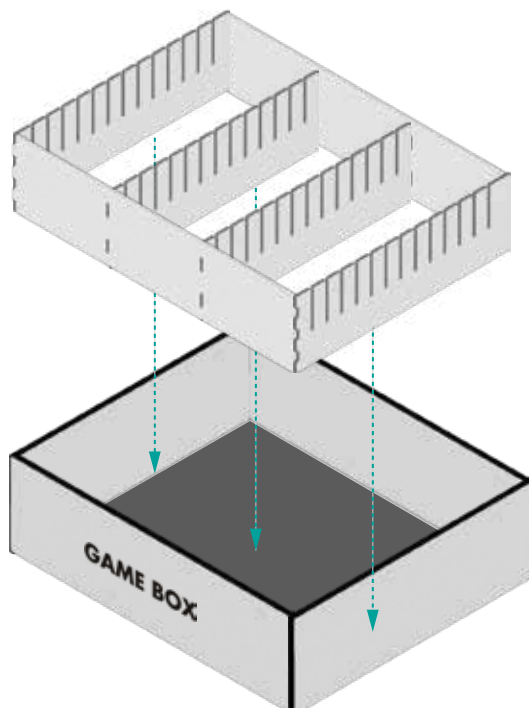


INS-EBR-4/4



Allow the insert to fully dry before completing the next step.

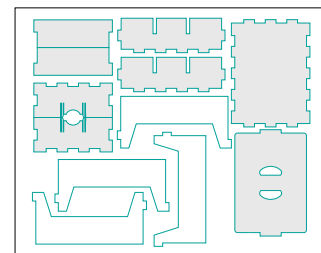
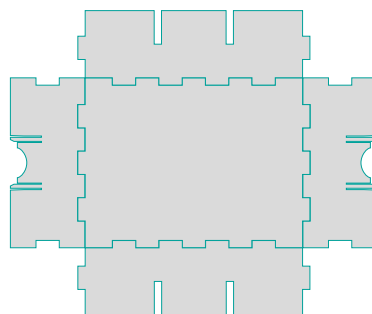
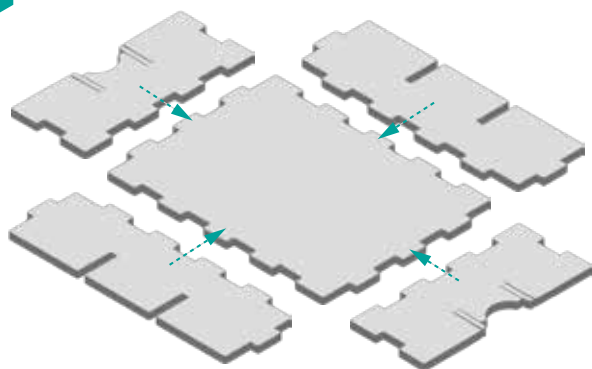
Remove all contents from the game box and slot in the provided black card bottom sheet, then the dried insert.



Wooden dividers can be placed in adjacent slots.

EARTHBORN RANGERS® INSERT - TOKEN BOX

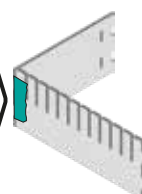
4



INS-EBR-2/4

Place all the above pieces flat on the surface as shown above, and push them together so they are all touching. Apply glue along the joins, then raise up the walls starting with a short and long wall. Use masking tape to hold the corner together and repeat this process with the other 2 walls.

USE MASKING TAPE TO HOLD CORNERS UNTIL DRY.

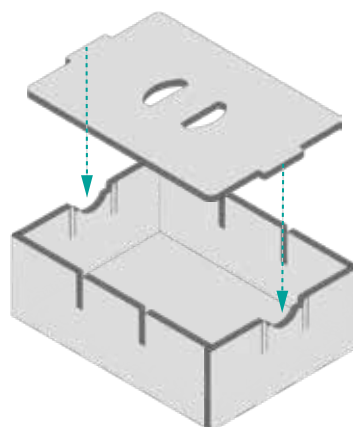
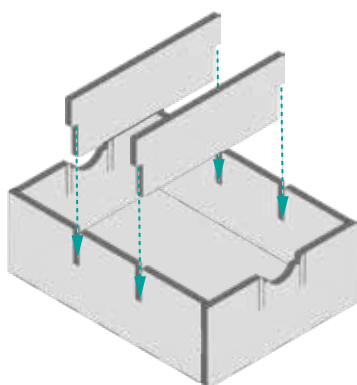


5



Decide how many internal walls to use.

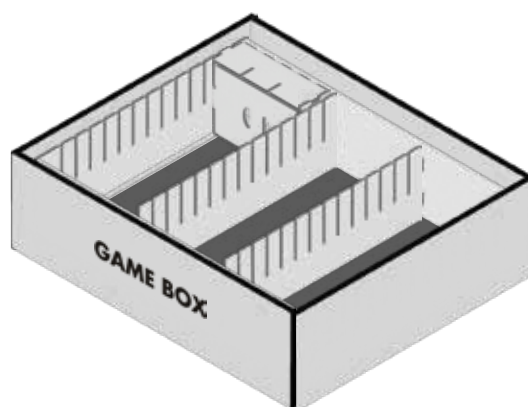
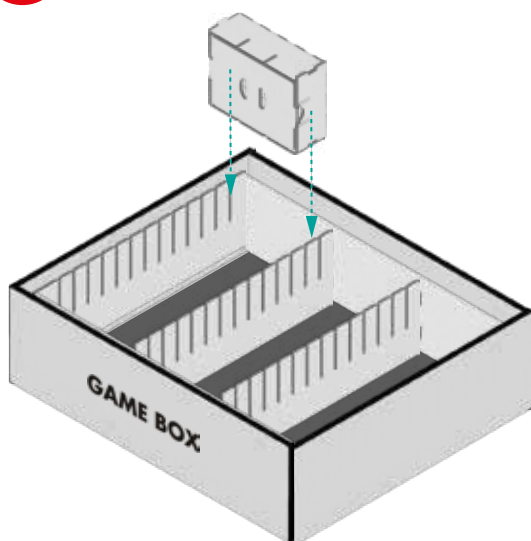
6



7



The finished token box slides in side ways into a card channel (face the lid against a wall).



FINISHED!

We hope this insert helps you better organise your game and helps to get it onto the table more often and more quickly.

Please recycle the left over MDF and packaging materials where possible.

You can view these instructions online at www.tesseractgames.co.uk/building-instructions

INS-EBR-COR