

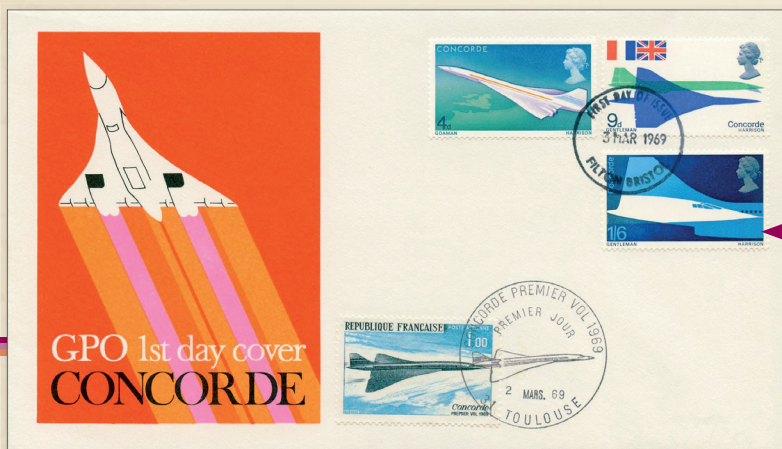
# COVER LOVER

The new magazine for first day cover collectors

**PLUS+**

The sun is shining and they are telling people to stay inside, well what better than edition three of Cover Lover +, to read with a nice ice-cold drink. I many have said it before and we do have an amazing stock, when I am ever in the need of inspiration I just go and open one of our stock units to see what I can find. Once you have placed your order I will recommend another good read, the July edition of Stamp Magazine, which has a fantastic feature on British First Day Covers, including an illustration of a very hard to find 1969 Concorde cover on the front, I happily send my congratulations to writer Alastair Gunn, and must also get article writing myself.

## BRIAN'S COVER OF THE MONTH



As I mentioned Concorde above and there are some doubles in this magazine. I thought I would include the famous 1969 Concorde cover doubled in Toulouse. These always turn up in fantastic condition and doubles were also done to mark the 30th Anniversary in 1969 and the 50th, which is featured with the other doubles.

**FC717 £300**

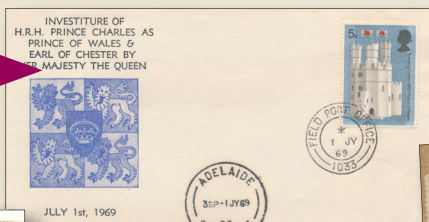
**Flexi Pay** £75 per month over 4 months

## AUSTRALIA

I just thought I would have a look and see what Australian covers or connected covers we have in our stock.

**FC742C £25**

1969 Investiture of the Prince of Wales, single stamp, Field Post Office 1033 CDS and Adelaide Australia CDS.



**FC162/06Q £25**

1953 Coronation cover, flown on the Coronation Day Qantas flight.



**FC072/04P £7.50**

1937 Coronation, Australian plain cover.

**FC4086G £35**

1988 Australian Bicentenary, CoverCraft official.



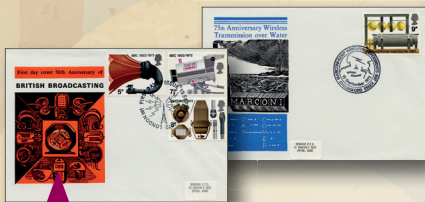
**FC4022P £10**

1980 Sport, Centenary of Tests, England V Australia, The Oval Official cover.



# ENGRAVED

These were the earliest covers produced by Tony and Cath, there are still people out there trying to find the rare postmarks or harder to find issues.



**FC917E £12**

1972 BBC, pair with connected postmarks.



**FC1057E £10**

1974 Churchill, Blenheim special FDI.



**FC1101E £7.50**

1975 Charity, Philatelic Bureau special postmark.



**FC1152E £15**

1975 Sailing, Royal Dorset Yacht Club, Weymouth special postmark.



**FC1241E £7.50**

1976 Telephones, Museum Taunton special postmark.

In 1967 there were flowers and in 1976 Roses, so it is quite unusual for the Post Office to feature them again with a set of stamps just 15 years later. I have found five interesting covers from the 1991 issue.

# 1991 ROSES



**FC4119E £25**

Buckingham Palace CDS.



**FC4119H £20**

Mansfield Show special slogan.



**FC4119HA £20**

Shopping in Full Bloom Cheltenham slogan.



**FC4119KB £20**

Rose Truro, Bradbury official.



**FC4119KC £20**

Robert Burns Alloway, Bradbury official.

# LIVERPOOL

I do like searching our stock for specific towns (let me know if you would like me to do this for you) especially when the search brings up some covers I did not expect to find, like this Liverpool search.

**FC1492 £25**

1977 Commonwealth Meeting, Liverpool Merseyside Police special postmark.



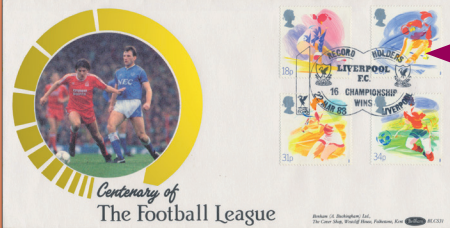
**FC4016U £15**

1980 Railway, Railway Philatelic Group cover, Liverpool Wheel special postmark, carried by the Flying Scotsman.



**FC4084E £20**

1988 Sport, Centenary of the Football League, Liverpool Benham cover.



**FC4104AA £15**

1990 Buildings, Liverpool Mechanised Letter Official special slogan.



**FC4049G £15**

1984 Urban Renewal, Liverpool Garden Festival special slogan.



There have been more Parliament issues than this, so expect to see it again in future magazines.

# PARLIAMENT

**FC1210E £10**

1975 Parliament, Conference Royal Festival Hall London special postmark, Benham Engraved cover.



**FC370A £40**

1965 Parliament, Evesham FDI postmark, Holmes Tolley cover.



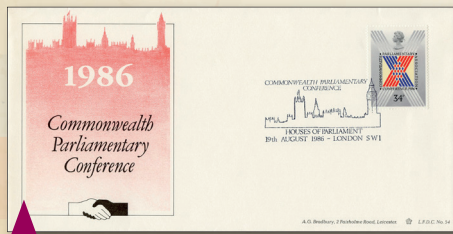
**FC4009D £10**

1979 Parliament, Cameo Stamp Centre, National Stamp Week official.



**FC4071A £10**

1986 Parliamentary Conference, Houses of Parliament, Bradbury official.



**FC4206O £30**

1999 Millennium Timekeepers miniature sheet, Houses of Parliament London SW1 Official cover.



# CHRISTMAS

I wanted to make Christmas a regular feature, but knowing where to start is tricky, so have decided one issue for each of the years 2001 - 5.



**FC4237A £20**

2001 The Robins, Bristol Official cover.

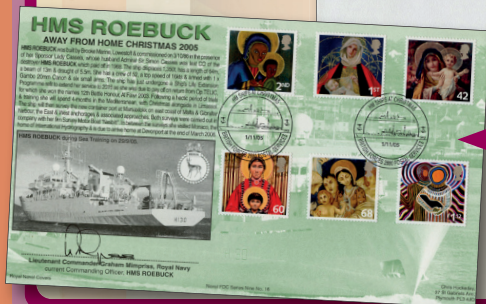


**FC4251H £35**

2002 Trafalgar Square official cover.

**FC4265H £30**

2003 Freezywater Enfield official.



**FC4295F £20**

2005 HMS Roebuck Away for Christmas Official cover.



**FC4279A £15**

2004 The Plum Pudding, Armitage Official cover.

This time the pin landed in the map in Bristol with five covers without a mention of Concorde, GWR or Brunel.

# BRISTOL



**FC4072L £20**

1986 RAF, Churchill Bristol CDS.

**FC4190ZL £15**

1998 Speed, RNLI Speedwell Bristol Official cover.



**FC4049A £15**

1984 Urban Renewal, Arnolfini, Bush House Bristol official.



**FC4269F £15**

2004 Lord of the Rings, Shirehampton Bristol CDS.

**FC4220R £20**

2000 Mind & Matter, Special Stamp @ Bristol CoverCraft official.



# SHIPS

Maritime is a big collecting theme in it's own right of course, but I still think I have found a few unusual covers.



**FC4035D £45**

1982 Maritime, Tall Ships Southampton slogan.



**FC4365G £20**

2009 Navy Uniforms, Greenwich Ships Wheel Official cover.

**FC4196U £25**  
1999 Workers Tale, Ship Building Wallsend Official cover.



**FC4100K £20**

1989 Christmas, HM Ships Christmas Greetings Official cover.



**01303 278137**

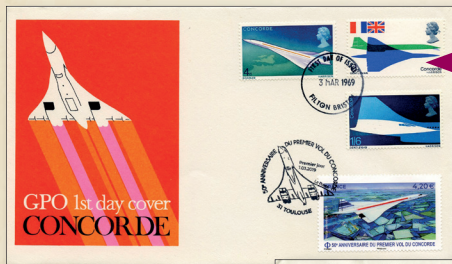
**FC712N £20**

15th January 1969 British Ships, Newcastle FDI postmark.



For those new to collecting, this is where you take an earlier produced cover and add a second postmark, there are a few rules of what you can and can't do, but I try to double a few older covers for each new set of stamps.

## DOUBLES



**FC717C £30**

1969 Concorde, Filton FDI, GPO cover, doubled on the 50th Anniversary with Toulouse special postmark.



**FC4012BM £15**

1979 Rowland Hill Miniature Sheet, doubled with the 2004 issue.

**FC4035ZA £9.99**

1982 Maritime, doubled in 2019 with the Mary Rose stamp.



**FC4066S £9.95**

1986 Queen's 60th Birthday, doubled in 2021 with 95th Birthday special postmark.



**FC4131P £10.95**

1992 Christmas, doubled in 2021 with a Bethlehem special postmark.



# IN WORSHIPFUL COMPANY

I think these are all ancient / old companies, based in London and since 1982 five of them have been featured on covers.



**FC4035X** £10

1982 Maritime, Worshipful Company of Shipwrights, Benham official.



**FC4053Q** £30

1984 The Royal Mail, Worshipful Company of Coachmakers official.

**FC4139E** £15

1993 Autumn, The Worshipful Company of Gardeners, Bradbury official.



**FC4132K** £35

1993 Swans, Worshipful Company of Dyers, Bradbury official.

Worshipful Company of Farriers



**FC4451A** £35

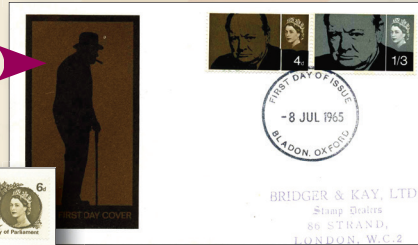
2014 Working Horses, Worshipful Company of Farriers official cover, Kings Langley.

Stamps with and without phosphor bands were issued for most issues between 1962 and 1967, the bands can be spotted quite easily, we can talk you through it if needed. Here are five phosphor stamp FDC with connected FDI postmarks.

## PHOSPHOR

**FC361E** £20

1965 Sir Winston Churchill, Bladon FDI postmark.



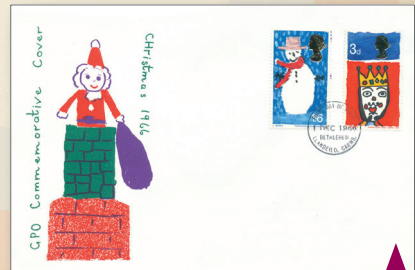
**FC300** £15

1964 Shakespeare, Stratford FDI postmark.



**FC380A** £40

1965 Parliament, Evesham FDI postmark.



**FC604** £15

1966 Christmas, Bethlehem FDI postmark.



**FC587** £20

1966 Battle of Hastings, FDI postmark.

For this issue we do north of the border, I think the only time it has actually appeared on the stamp was a single value from the 1990 Buildings issues.



**FC1429A £40**

1977 Silver Jubilee, Glasgow Palace of Art official.

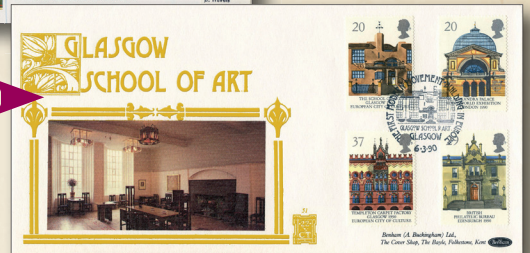


**FC4056GG £15**

1985 Trains, Glasgow CDS.

**FC4104F £35**

1990 Buildings, Glasgow School of Art Benham official.



**FC4135K £15**

1993 Orchids, World Orchid Conference Glasgow Official cover.



**FC4192Z £20**

1999 Inventors Tale, Steam Power Glasgow Official cover.

## TELLING YOU THE TRAVELLERS TALE

There was a massive number of Official covers for these 1999 stamps which took us up to the Millennium. There was a different theme each month, and here we have the Travellers issue.



**FC4193B £30**

Captain James Cook Bradbury official.



**FC4193BA £20**

Meriden Coventry Bradbury official.

**FC4193C £35**

Great Malvern official.



**FC4193D £30**

Easy Jet Luton Airport official.

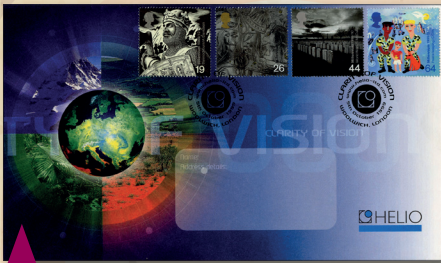


**FC4193K £35**

Flying Scotsman, Kings Cross Official cover.

# SCOTLAND

Though we have already done Glasgow, I thought I could get away with a more general Scotland selection.



**FC4203E £20**

1999 Soldiers Tale, Scottish Independence Bannockburn Pilgrim official.

**FC4078U £35**

1987 Scottish Heraldry, Broadlands Romsey Official cover.



**FC4208D £25**

2000 Above & Beyond, Scottish Seabird Centre, Bradbury official.

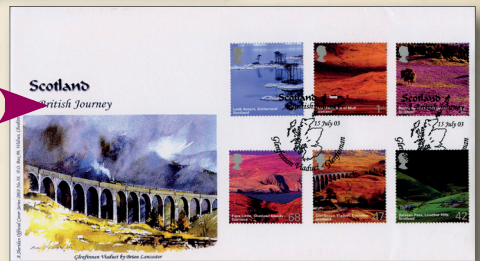


**FC4284J £20**

2005 Castles, The Castle Frama cancel plus Scottish Parliament CDS postmark.

**FC4261B £35**

2003 Scotland, Glenfinnan Viaduct official cover.



Dawn covers are best known for their Football 'match' covers, but they have also dabbled in the world of First Day Covers, and I have included a couple of football and three others.

# DAWN



**FC4011U £30**

1979 Year of the Child, World Scout Jamboree, Dawn official.



**FC4155J £15**

1995 National Trust, Darlington Dawn official.

**FC4263R £15**

2003 Transports of Delight, Dinky Trams & Buses, Dawn official.



**FC4189D £15**

1998 Carnival, Arsenal FC Dawn official.



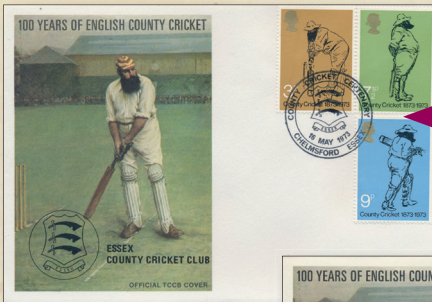
**FC4194A £30**

1999 Patients Tale, Macclesfield Town Dawn official.



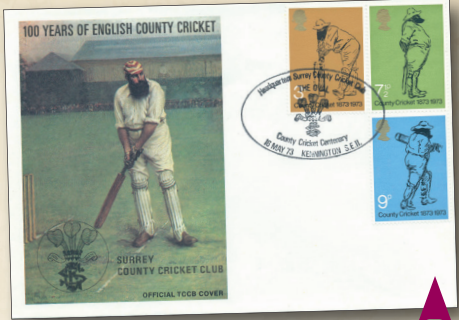
# TCCB

This issue marked the centenary of County Cricket, so next year will be the 150th, we have chosen five of the Official TCCB covers with special postmarks, full list of all the covers on request. Or ask Craig for a list of signed covers.



**FC975B £45**

Essex CCC TCCB cover, Chelmsford special postmark.



**FC975N £45**

Surrey CCC TCCB cover, special Surrey The Oval postmark.

**FC975O £45**

Sussex CCC TCCB cover, special Hove postmark.



**FC977 £30**

Gloucestershire CCC TCCB cover, Downend Bristol special postmark.



**FC975R £45**

Yorkshire CCC TCCB cover, Headingley special Yorkshire V Hampshire postmark.

You will already know I think the ones from the last twenty years are very undervalued, as so few of these Post Offices are still open.

# CDS



**FC4365AC £15**

2009 Royal Navy Uniforms, Nelson Portsmouth CDS.



**FC4370MA £10**

2010 Trains, Boats & Planes miniature sheet, Southampton CDS.

**FC4324G £20**

2007 Birds, RSPB Frama cancel, plus Eagle Lincoln CDS.



**FC4306AA £10**

2006 Victoria Cross, Battle, Sussex CDS.



**FC4266MD £10**

2003 Rugby World Cup miniature sheet, Rugby CDS.

# BIRDS

Bird stamps are a regular GB issue every five years or so, I think I could have picked any one of these issued and filled a page. Let me know if you would like a full list.



**FC552D £25**

1966 Birds, Stratford Upon Avon CDS, Holmes Tolley cover.



**FC4091A £25**

1989 Sea Birds, RSPB Covercraft official cover.

**FC4253A £15**

2003 Birds of Prey, Barn Owl, Northampton Official cover.



**FC4015G £25**

1980 Birds, RSPB official.



**FC4182BA £10**

1998 Endangered Species, Lincoln CDS.

It is hard to believe that it is 25 years since the Princess passed away. The stamps were issued, early 1998, and we have five different CDS postmarks.

## 1998 DIANA CDS



**FC4183B £35**

Kensington High Street CDS.



**FC4183BA £20**

House of Lords CDS, Palace of Westminster cover.



**FC4183BB £15**

Wales, Sheffield CDS.



**FC4183BD £15**

Paris Avenue CDS.



**FC4183BC £15**

The Jewel CDS.

I just wondered what I would find if I put the world Philatelic into our computer, well the answer was quite a lot, so this is the slimmed down / starter version.



**FC1272A £15**

1976 Reformers, Forces Post Office 62 CDS, Philatelic Club RAF Bruggen cover.



**FC4174C £25**

1997 Missions of Faith, Uckfield Philatelic Society official.

**FC1286E £22.50**

1976 American Bicentenary, Philatelic Congress Plymouth special postmark, Benham Engraved cover.



**FC1438 £15**

1977 Silver Jubilee, Weymouth & Portland, Philatelic Exhibition special postmark.

**FC4080E £15**

1987 Pottery, Redhill Philatelic Society special slogan.

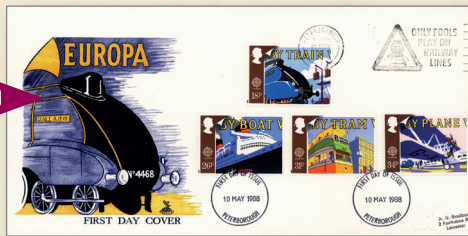


There were some good issues in 1988, I think you will see the transport stamps being used for many years to come. Lots of Officials, CDS, Slogans and TPOs to offer, full list available on request.

## 1988 TRANSPORT

**FC4085H £25**

Only Fools Play on Railway Lines slogan.



**FC4085VA £15**

Berkhampstead Accounts CDS.

**FC4085R £30**

19th Century Post Box Discovery Spilsby official.



**FC4085WB £20**

North Eastern TPO Night Up postmark.

**FC4085V £15**

Nunthorpe Station Middlesbrough CDS.



# 1988 ARMADA

For this issue I have kept it simple and am just going to show you five official covers, but as you would expect there are lost more and we would be happy to send you a list of what we have.



**FC4087F £30**

The Lizard Benham official.



**FC4087L £20**

Tilbury Tudor Rose, Bradbury official.

**FC4087G £25**

Royal Tournament Earls Court official cover.



**FC4087O £30**

Scout Camp Blair Atholl Official.

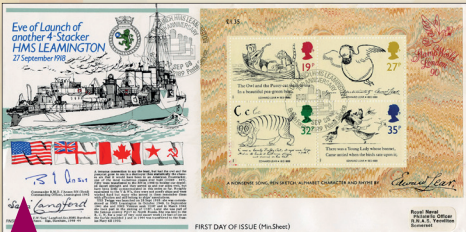


**FC4087J £15**

John Hurleston official.

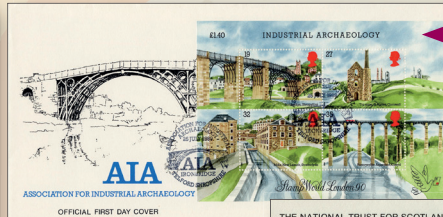
## STAMP SHOW MINIATURE SHEET

As in the late 1970's, in the run up to the 1990 Show special miniature sheets were issued with part of the money being used to subsidise the international stamp show. We offer here the ones issued in 1988, 1989 and the final 1990 one.



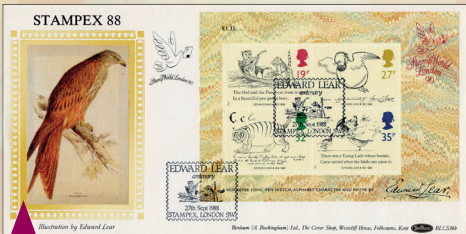
**FC4089F £25**

1988 Edward Lear miniature sheet, Launch of HMS Leamington Official cover.



**FC4097B £10**

1989 Industrial Archaeology miniature sheet, Association for Industrial Archaeology Telford Official cover.



**FC4089G £15**

1988 Edward Lear miniature sheet, Stampex Benham Official cover.



**FC4097D £45**

1989 Industrial Archaeology miniature sheet, National Trust for Scotland official.



**FC4106F £30**

1990 Penny Black miniature sheet, Jacob Perkins CoverCraft official.