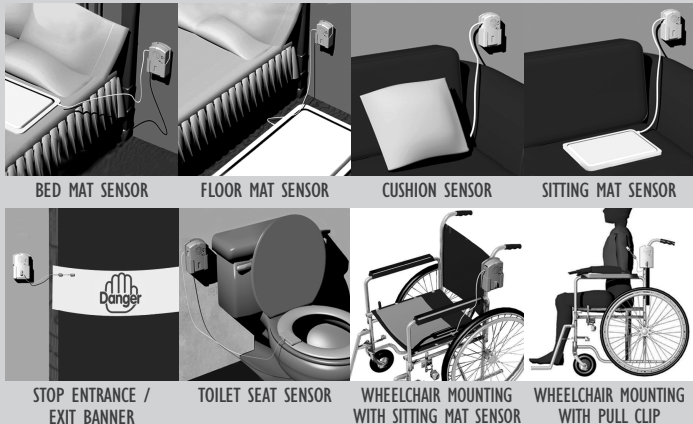




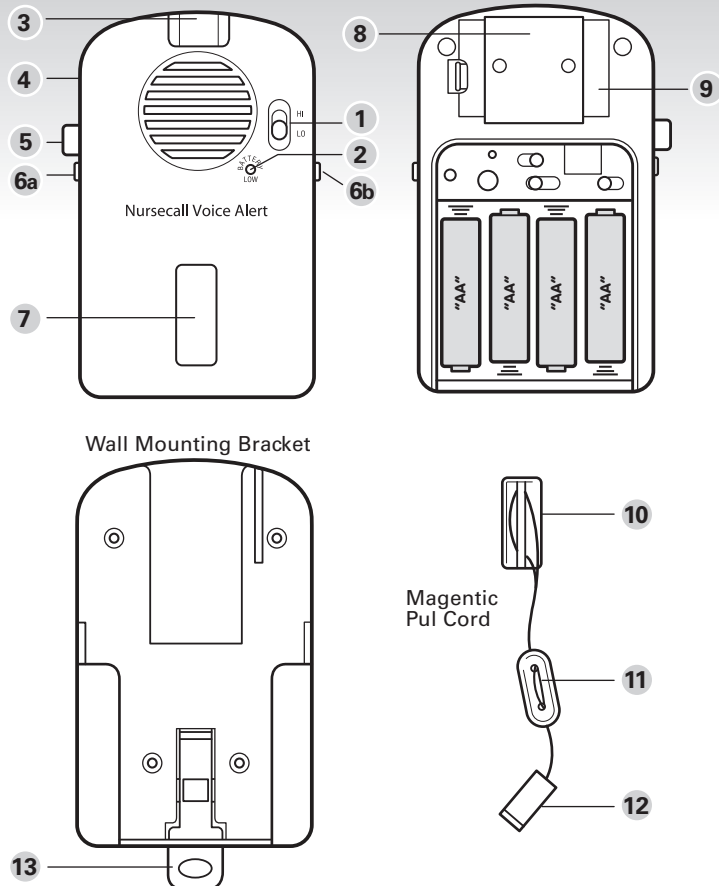
NURSECALL VOICE ALERT

A versatile fall management alarm system with magnetic switch and optional sensor pad control. Choice of voice or 4 different alarm tones. Can connect and alarm through Nursecall systems.



Please retain this information for future reference

OPKOTS0893IM0



1. Volume Selector
2. Battery Level Indicator LED
3. Alarm LED Light
4. Sensor Device Jack /Socket (RJ-9)
5. Nurse Call Jack (6.3 mm Mono) (optional feature)
6. Suspend Buttons (a) & (b)
7. Magnetic Key Sensor Compartment
8. Mounting Clip
9. Magnetic Pull Cord Storage Compartment
10. Magnetic Key
11. Pull Cord Adjuster
12. Clip
13. Alarm Release Latch

NOTE : This Voice Alert is a safety device and steps have been taken to minimize the risk of the configuration settings being changed, or the unit turned off in error. These steps include:

1. On / Off switch is not provided.
2. All device configuration settings are located inside the battery compartment.

It is recommended that caregivers

1. Screw down the battery door after battery installation and/or device configuration settings.
2. Remove batteries from the device when not in use, to extend the battery life.

INSTALLATION OF BATTERIES

This product uses 4x AA (UM-3/LR6) Alkaline batteries (not included).

1. Loosen the screw and open the battery door located at the back of the unit.
2. Remove old batteries and insert 4x new AA (UM-3/LR6) Alkaline batteries. Observe polarity (+ -) markings when installing batteries. Please read the "Caution" section of this instruction manual carefully for "battery care" guidelines. After batteries are properly installed, the unit will 'beep' to indicate the device is in "stand by" mode.
3. Ensure the "Battery Low" indicator on the front of the unit is not illuminated, as this would suggest the batteries require replacement.
4. Follow next section to set up the alarm for the first time or replace the battery compartment door and tighten screw.

TO SET UP THE ALARM

1. Remove the Magnetic Pull Cord from the storage compartment located behind the metal mounting clip and place the Magnetic Key in the small compartment on the front of the alarm unit.
2. Loosen the screw and open the battery door located at the back of the unit.
3. Select the Alarm Mode :

Silent : Alert Light Only mode

When unit is activated, the Alarm LED will blink but no voice or alarm will sound.

Mode A : Voice plus Alarm mode

When the unit is activated, the voice recording will play for 20 seconds before changing over to alarm tone. If the recorded message is less than 20 seconds it will loop until 20 seconds has elapsed.

Mode B : Alarm Tone only

When the unit is activated, the selected alarm tone will sound without playing the voice recording.

4. Select Alarm Tone by sliding the Alarm Tone switch to position 1, 2, 3 or 4.
5. Record a voice message of up to 20 seconds :
 - i. Make sure the Alarm Mode is switch is in position "A" and the Alarm Device selector is set to "a"
 - ii. Remove the Magnetic Key on the Pull Cord from the front of the unit and the unit should now start to play a previously recorded message.
 - iii. Press and hold the RECORD button to start recording. The RECORD LED will illuminate to indicate recording is in progress. Speak into the microphone (Mic.) on the rear of the unit holding the unit at a distance of 6-10 inches. Release the RECORD button when recording is completed or when the LED light goes off, indicating maximum recording time has reached.
 - iv. Replace and then remove the Magnetic Key to listen to the new recording. To overwrite the message, simply repeat steps above.**NOTE :The voice message you recorded is safely stored in memory even when there is no power to the unit.**
6. Select Alarm Device by sliding the switch to position "a", "b" or "c"
 - i. Select "a" if the Magnetic Pull Cord with the Magnetic Key will be used as monitoring device. Under this selection, the alarm will sound when the Magnetic Key is removed from the small compartment on the front of the alarm.
 - ii. Select "b" if using a chair sensor pad accessory or similar device that is designed to alarm should the user release weight from it. Connect the sensor pad plug to the square socket at the side of the Voice Alarm. When the user gets-up or moves weight from the pad the sensor switch will open activating the alarm.
 - iii. Select "c" if using a floor mat sensor accessory or similar device that is designed to alarm should weight be applied to it. Connect the sensor mat plug to the square socket at the side of the Voice Alarm. When anyone steps on or applies weight to the mat the sensor switch will close activating the alarm.When an accessory device is used as in (ii) and (iii) above, the Magnetic Pull Cord can be stored in the storage compartment located at the back of the metal mounting clip.
7. Choose either "HI" or "LO" volume using the switch on the front of the unit and test to make sure the unit is functioning as selected. If not functioning as intended, please re-follow the instructions above. If necessary, remove all batteries momentarily and replace them to reset the Alarm.
8. Ensure the "Battery Low" indicator on the front of the unit is not illuminated, as this would suggest the batteries require replacement.
9. Replace the battery door and tighten screw. The unit is ready for use.

MOUNTING THE ALARM

The Alarm will need to be securely mounted to function properly. The Alarm can be mounted by using the metal Belt Clip at the back of the unit (e.g. when used on a wheel chair) or by using the Wall Mounting Bracket (e.g. when used as bed monitor) supplied with the unit. Wall Mount Bracket should be attached to wall or headboard with the mounting screws. An optional Wall Mounting Bracket with suction cup may be purchased for mounting the bracket on tiled wall or glass surface.

The Alarm should be mounted to allow maximum freedom of movement ensuring the wire or pull cord does not become entangled. For example :

1. to use as a bed alarm with the pull cord : mount the bracket at the centre of the headboard.
2. to use as a bed alarm with a floor sensor mat : mount the bracket at the foot of the bed.
3. to use as an exit alarm with the pull cord : mount the bracket on or near the door frame.
4. to use as a wheelchair alarm with either the pull cord, sitting pad sensor or seat belt sensor : use the metal clip to attach the alarm to left or right of the wheelchair avoiding direct contact with the patient's back.

TO OPERATE THE ALARM

1. Make sure the Alarm is properly set up as intended (see TO SET UP THE ALARM section above).
2. Mount the Alarm in an appropriate location or in the Wall Mount Bracket (see MOUNTING THE ALARM above).
3. Attached the selected sensor device to the Alarm:
 - i. If the Magnetic Pull Cord with Magnetic Key is used as the monitoring device :
 - a. Place the Magnetic Key in the small compartment on the front of the alarm unit
 - b. Attach the clip to the patient's clothing. Ensure that the patient cannot become entangled in, or easily remove the cord.
 - c. Adjust the pull cord to the desired length and tidy/fasten any excess

WARNING : Long pull cord can entangle the patient and potentially be dangerous. Use with care and supervision.

- ii. If an auxiliary accessory device is in use :
 - a. Locate the square socket (RJ-9 socket) at the side of the Alarm and plug in the device. The plug should "snap" into place. Gently tug the wire to make sure the device is properly connected and does not pull out from the Alarm. Do not continue to use if the socket and plug connection to the Alarm fails to lock in place.

- b. Tidy and fasten any excess or loose wire to minimize risk of injury to staff or patient.

4. If your Voice Alert is equipped with an optional Nurse Call Jack (6.3mm mono jack), you can connect the Nurse Call plug to the device. When the alarm is activated, this will trigger an alarm to the Nurse Station as if the Call button had been pressed. If necessary, contact your dealer for an optional adaptor for the Nurse Call Jack.
5. Select Alarm Volume level by sliding the Volume switch to position "HI" or "LO"
6. Check the Battery Low LED and test the unit again to make sure the Alarm will sound as intended.
7. An Alarm Suspense function is provided to suspend the alarm for 30 seconds, during which the alarm will not trigger. This is particularly useful, say, if the caregiver wishes to lift the patient off the sensor mat to change the sheet. Activate Alarm Suspense by pressing the Alarm Suspense button (a) and (b) simultaneously. The alarm will arm itself automatically after 30 seconds.

CAUTION

1. Read instructions carefully.
2. This product is not a toy. Small parts and long wires can be potentially hazardous. Use with care and under supervision only.
3. Use of this product by persons fitted with an implanted medical device, such as pacemaker or defibrillator, may be potentially dangerous. Do not place the magnet within 6" (15cm) of implanted device. Refer to manufacturer of implanted device for further advice.
4. Alarm emits loud signals. Do not point directly at any person to avoid the risk of hearing damage.
5. Always test unit's function and battery power before use to ensure proper operation. If the Battery Low LED light is illuminated or the alarm sound level is low, replace batteries immediately.
6. Remove batteries when not in use.
7. Avoid direct contact with water. Clean this product with damp cloth only. Do not submerge in water and remove batteries before cleaning this product.
8. Under environment with electrical fast transient, the unit may malfunction and require user to reset the unit. Remove batteries and then replace batteries will automatically reset the unit.
9. The unit may malfunction when there is strong radio interference or a power line nearby. The unit will revert to normal operation when the interference stops

BATTERY GUIDE

1. Always remove batteries when device not in use.
2. Batteries should only be installed/replaced by an adult.
3. Battery care guide:
 - a. Use only 4x AA (UM-3/LR6) Alkaline batteries. Do not mix battery types : alkaline, standard (zinc carbon) or rechargeable (nickel cadmium) batteries.
 - b. Do not mix old and new batteries. Always replace a full set of batteries at the same time.
 - c. Do not use rechargeable batteries.
 - d. Read instruction carefully and install batteries correctly observing the polarity (+ -) markings.
 - e. Do not attempt to recharge non-rechargeable batteries.
 - f. Do not use mercury oxide batteries.
 - g. Remove exhausted batteries to avoid leakage.
 - h. Remove batteries from product when not in use for a long period of time.
 - i. Do not short circuit battery contacts.
 - j. Do not dispose of batteries in fire.

This product conforms to the EMC requirements laid down by the Council Directive 89/386 EEC