

RT500K TIMBER SWING DOOR SIZES (SINGLE DOOR)				
SPECIFICATION CODE	(A) OVERALL FINISHED DOOR SIZE (WxH)++	(B) SUGGESTED MIN INTERNAL FRAME SIZE (WxH)*	APPROXIMATE WEIGHT (KG)**	ADDITIONAL NOTES
T5K-S6262040	632x2040	637x2050	30	MIN 90MM LINING
T5K-S7262040	732x2040	737x2050	33	MIN 90MM LINING
T5K-S8262040	832x2040	837x2050	35	MIN 90MM LINING
T5K-S9262040	932x2040	937x2050	38	MIN 90MM LINING

++ (A) MANUFACTURING TOLERANCES +/- 2.5MM
* (B) GUIDE ONLY - INCREASE CLEARANCE DIMS WHERE REQUIRED
** EXCLUDES HARDWARE

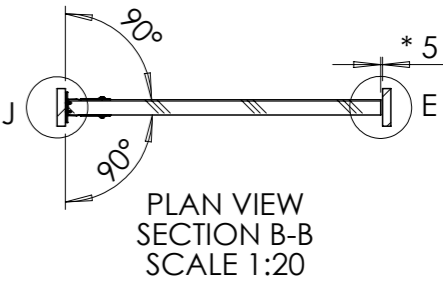
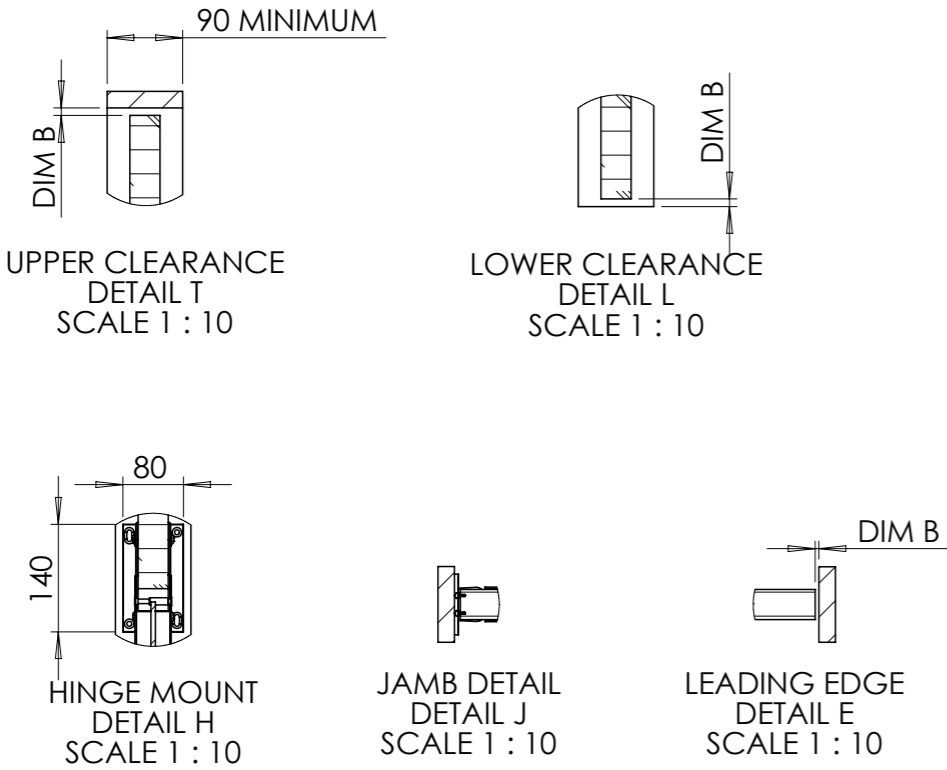
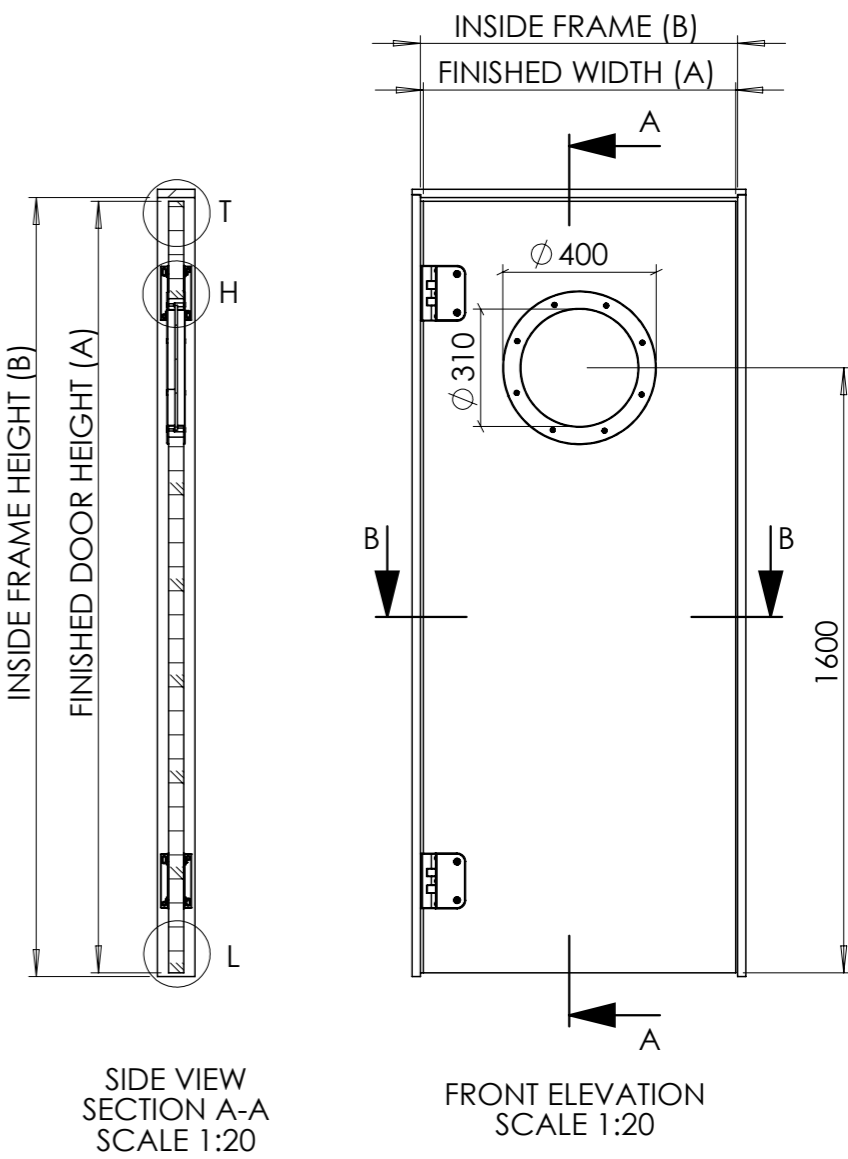
SIZES ARE LIMITED TO SOME FINISHES. PLEASE CHECK THAT SIZES ARE AVAILABLE FOR YOUR SELECTED FINISH BEFORE SPECIFICATION.

DOOR WIDTH/HEIGHT MAY BE TRIMMED ON SITE (MAX 7MM ONE VERTICAL AND HORIZONTAL EDGE). SOME ADDITIONAL MODIFICATIONS TO HARDARE MAY BE REQUIRED IF DOORS ARE TRIMMED. DOORS ARE SUPPLIED READY TO FIT INTO SUITABLE PRE-PREPARED OPENINGS.

PLEASE ENSURE ALL SUBSTRATES ARE SUITABLY CONSTRUCTED.

PLEASE REFER TO NBS SPECIFICATION FOR HARDWARE, WINDOW AND PANEL OPTIONS.

NO LININGS ARE SUPPLIED.



UNLESS OTHERWISE SPECIFIED: DIMENSIONS ARE IN MILLIMETERS SURFACE FINISH: MACHINE TOLERANCES: 0.3mm/300mm LINEAR: 0.3mm/300mm ANGULAR: 0.3mm					Speedflex® SPEEDFLEX UK LTD - CARDIFF HOUSE, CARDIFF ROAD, BARRY VALE OF GLAMORGAN CF63 2AW TEL: 0800 288886 EMAIL: SALES@SPEEDFLEX.NET - WWW.SPEEDFLEX.NET		DO NOT RELY ON DRAWING SCALE	REVISION 1
							PROJECT: RT500K 180° TIMBER SWING DOOR	
							TITLE: 180° DOUBLE ACTION KERF JAMB SEAL MODEL	
							DWG NO. 31519-RT500K-SNLES-R1	A3
							SCALE: AS SHOWN	SHEET 1 OF 1